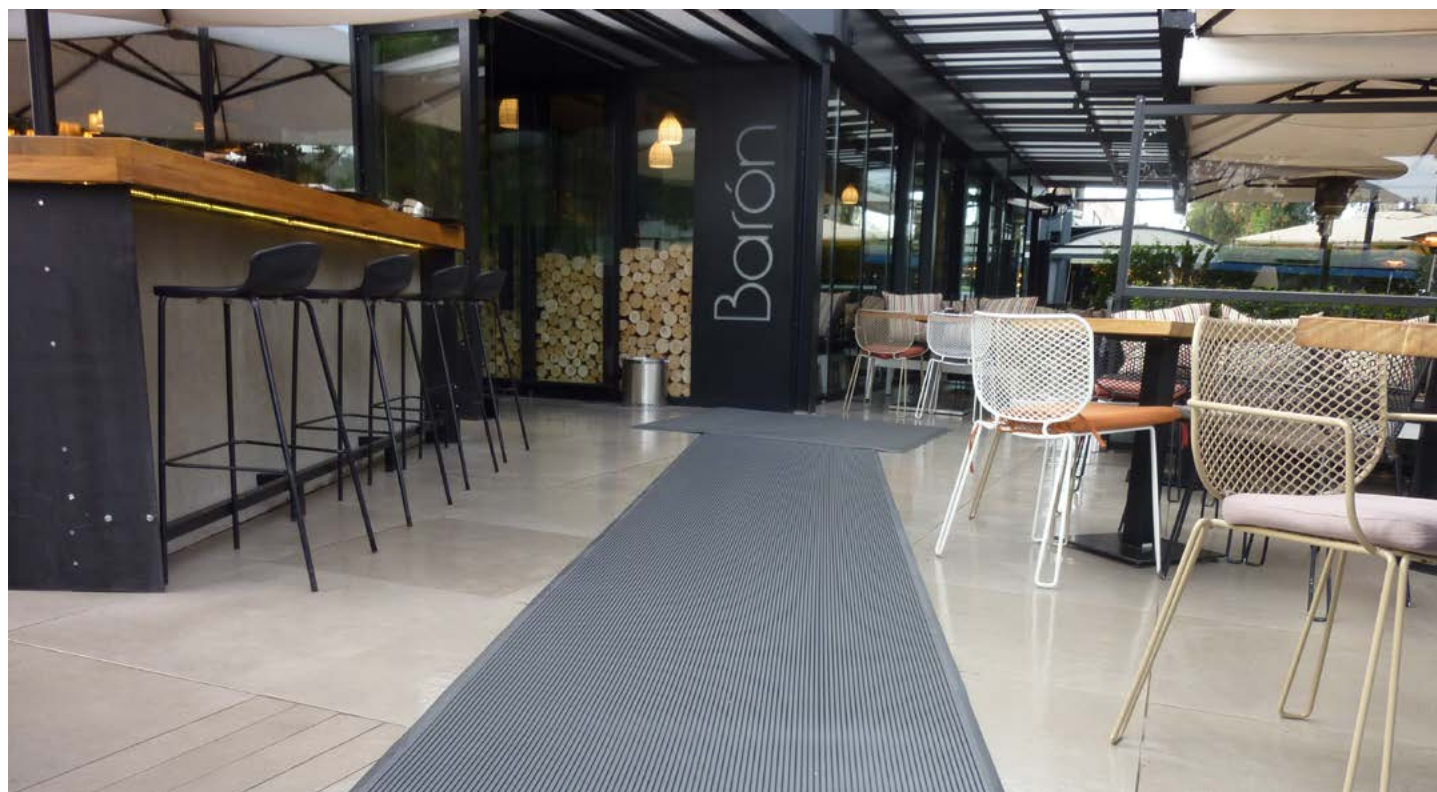


Frontrunner SB



Solid-backed entrance matting designed for internal and external areas with no mat well.



Frontrunner SB is a low-profile, solid-backed mat that can be loose laid to integrate easily with your existing floor coverings.

Simply roll out, cut to fit and lay within your existing carpet tiles or luxury vinyl tiles – no mat well needed. You can also place directly on your current floor with ramped PVC edges to create a slip-resistant walkway. The mat's ribbed pattern scrapes shoes and wheels clean, while the grid traps and collects any debris, helping to reduce the amount of dirt walked into the building. Wheel-and-heel proof with excellent rolling resistance, it's perfect for commercial buildings and shopping centres with high traffic.

Features:



Etched pattern



One layer hollow construction



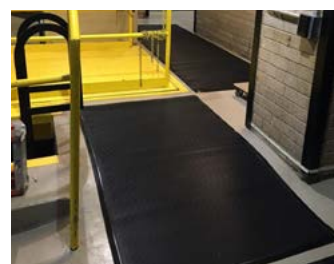
Ribbed vinyl pattern with solid backing



6.5mm grid height



Close mesh grid



Benefits:



Certified slip resistant
(DIN 51130: R11,
ASTM C1028:
0.6/0.6)



Light to handle



Easy to install, no
need for recessed
mat well



Loose lay or adhere
to subfloor



Wheel-and-heel
proof



Excel Matting

Barrie Woodcock

bwexcel@outlook.com

07885 769296



UK manufactured matting products

Data sheet

Standard sizes:

Product	Frontrunner SB
Height	6.5mm (1/4")
Standard roll options	10 x 1m (33' x 3'3")
Weight	6.3 kg/m ² (1.3lb/sq.ft)

Tolerances:

	Height (+/- 0.5mm)	Length (0+0.3m)	Width (0+2cm)
Frontrunner SB	6.5mm	10m	100cm

All dimensions are nominal

Technical information:

Acoustic	Excellent sound absorption
Chemical	Resistant to most acids, alkalines and oils.
Composition	Flexible Polyvinyl Chloride (PVC)
Environment	Frontrunner SB is 100% recyclable. We don't use any substances included in the SVHC list under REACH in any of our matting products. Phthalate free.
Fire	EN ISO 13501-1:2007-Cfl-S1, ASTM E648 – Class 2
Reversion	Thermoplastic shrinkage can result in size reductions up to 2%. This may be accelerated in hot environments.
Rolling resistance	ASTM F 2753: No apparent damage to the vinyl portion of the system after 1,000 cycles at 500lbs
Slip resistance	ASTM E303 Dry/Wet with lines along-lines across 74-95 / 61-74 DIN 51130: R11, V10
Thermal	Designed to function at temperatures from -23°C and up to +60°C. Slight size variation may occur at temperature extremes.
UV light	Resistant to PVC degradation
Warranty	Three years.

Installation:

Frontrunner SB's one-piece construction means installation is simple.

There are two ways to install SB: adhere or, for modules, loose lay. For large installations with medium to high traffic, we recommend adhering your mat.

[Watch](#) or [download](#) the installation instructions.

Cleaning:

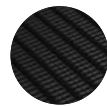
Keeping Frontrunner SB looking good is easy:

- Light to handle
- Simply roll or lift to clean
- No special tools needed
- Quick and easy to clean because of the solid backing

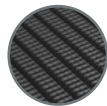
[Watch](#) or [download](#) the cleaning instructions.

Data sheet

Colours:



Black



Grey

More colours
available
upon request

Ancillaries:

PVC edging (SB / SB+)



Supplied in rolls of 60m (197") length. One tube of cold welding paste recommended for every 10m of edging. Comes in black and dark grey. Size: 6.5mm x 30mm x 60m (1/4" x 1" x 197')

PVC joining strip (SB / SB+)



Can be welded to join rolls end-to-end or side-to-side when doing large installations. Comes in black. Size: 3.5mm x 3.6m (1/8" x 11'9")