

One-piece entrance mat designed for narrower building entrances and longer walkways.








**Frontrunner Walk is a one-piece entrance mat designed for narrower building entrances and longer walkways, both indoors and out.**

Heel-proof and wheel-proof with excellent rolling resistance, this durable mat can be installed as a surface-mounted entrance mat or loose laid for a roll-and-go slip resistant solution. The clever design features a diamond-cut pattern and cross-directional top ribs to ensure a firm grip underfoot, while simultaneously scraping shoes and wheels clean.

The one-piece construction means the mat can be quickly rolled out where needed or cut to fit on site – no previous site visits required.




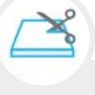


## Features:

				
Diamond cut pattern	Two layer open-grid construction	Close mesh grid	Made from flexible PVC	Comes in 6m (33') rolls



## Benefits:

				
Certified slip resistant (DIN 51130:R11, ASTM I677:0.6/0.6)	Excellent drainage (DIN 51130:V10)	Wheel-and-heel proof	Easy to cut on site, contours to uneven surfaces	Seamless installation



## Excel Matting

Barrie Woodcock  
bwexcel@outlook.com  
07885 769296



UK manufactured matting products

## Data sheet

### Standard sizes:

<b>Product</b>	Frontrunner Walk
<b>Height</b>	10mm (3/8")
<b>Standard roll options</b>	0.91 x 6m (3' x 20')
	1.22 x 6m (4' x 20')
<b>Weight</b>	8 kg/m <sup>2</sup> (17.7 lbs/sq.ft)

### Tolerances:

	Height (+/- 0.5mm)	Length (0+3mm)	Width (0+2mm)
Frontrunner Walk	10 mm	6 m	91 cm 122 cm

All dimensions are nominal

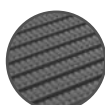
### Technical information:

<b>Acoustic</b>	Excellent sound absorption
<b>Chemical</b>	Resistant to most acids, alkalines and oils.
<b>Composition</b>	Flexible Polyvinyl Chloride (PVC)
<b>Environment</b>	Frontrunner Walk is 100% recyclable. We don't use any substances included in the SVHC list under REACH in any of our matting products. Phthalate free.
<b>Fire</b>	EN ISO 13501-1:2007-Bfl-S1, ASTM E648, Class I
<b>Reversion</b>	Thermoplastic shrinkage can result in size reductions up to 2%. This may be accelerated in hot environments.
<b>Slip resistance</b>	DIN 51130: R11, V10
<b>Thermal</b>	Designed to function at temperatures from -23°C and up to +60°C. Slight size variation may occur at temperature extremes.
<b>UV light</b>	Resistant to PVC degradation
<b>Warranty</b>	Four years.

### Colours:



Black



Dark grey

More colours  
available  
upon request

## Data sheet

### Installation:

Fronrunner Walk's one-piece construction means installation is simple:

- Loose lay, no fixing required
- Durable, one-piece construction
- Supplied in 6m rolls; simply cut to fit on site
- Contours to the floor

### Cleaning:

Keeping Fronrunner Walk looking good is easy:

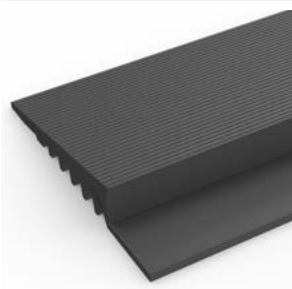
- Simply roll or lift to clean
- No special tools needed
- Easy to clean using a vacuum, plus a coarse brush for clearing the debris in the grid

[Watch](#) or [download](#) the cleaning instructions.

### Ancillaries:

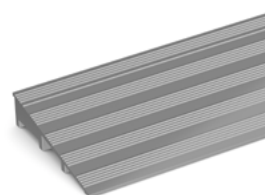
#### > For surface mounted installations

PVC edging (H: 10mm, W: 50mm)



Supplied in rolls of 10.1m (33') length. One tube of cold welding paste recommended for every 10m of edging. Comes in black and dark grey. Size: 10mm x 50mm x 10.1m (3/8" x 2" x 33')

Aluminium ramp (H: 10mm, W: 45mm)



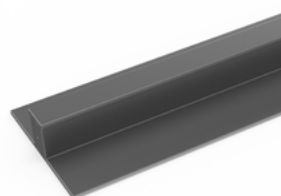
Supplied in sections of 1.98m (6'5") length with fixing screws. Comes in anodised aluminium. Size: 10mm x 45mm x 1.98m (3/8" x 1 3/4" x 6'5")

Connector clips: side-to-side (H: 10mm)



For joining sections of matting together end-to-end. Supplied in packs of 10

PVC snap track (H: 10.5mm)



Two-part snap track that can be welded together to join rolls end-to-end or side-to-side to cover large areas. We recommend one tube of cold welding paste for every 10m of edging. Comes in dark grey. Size: 10.5mm x 2.5m (13/32" x 8'2")

#### > For recessed installations

R frame (H: 10mm)



You'll need these to secure the matting on the left-to-right edges. Supplied in sections of 3m (10') length with fixing screws and plugs. Comes in anodised aluminium, powder coated dark grey and black. Size: 10mm x 12mm (3/8" x 15/32")

U section (H: 10mm)



If the front-to-back dimension of the mat well is greater than the final length of your matting, you may need a U section to secure the different sections together. Supplied in sections of 3m (10') length, with fixing screws and plugs. Comes in anodised aluminium, powder coated dark grey and black. Size: 10mm x 18mm (3/8" x 11/16")