

# Frontrunner Plus

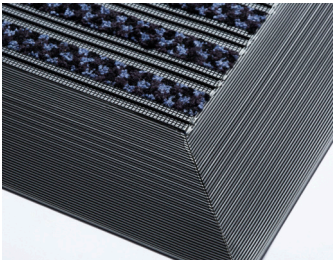
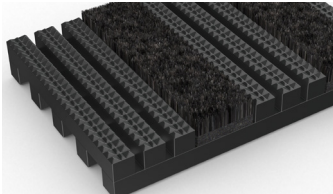



Internal entrance matting with carpet inserts for maximum moisture removal.




**Frontrunner Plus is an absorbent entrance mat specifically designed to not only stop dirt in its tracks, but moisture too.**

The mat's aggressive tread pattern scrapes shoes and wheels clean, while heavy-duty absorbent carpet inserts removes and dries any moisture. This reduces cleaning internals, expands the life of your floor finishes and keeps interiors looking stylish for longer. Slip resistant, wheel-proof and heel-proof, Frontrunner Plus is an ideal choice for commercial entrances, especially for businesses and shopping centres with high traffic. Choose from 50 colour and style combinations – you can also add a logo panel for added branding.







Diamond cut pattern



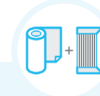
Two layer open-grid construction




Absorbent carpet inserts




Close mesh grid




Comes in 10m (33') rolls or modules




Slip resistant, high soil removal




Excellent drainage



Maximum moisture removal



Heel-and-wheel proof



Seamless installation



## Data sheet

### Standard sizes:

Product	Frontrunner Plus	Low Profile
Height	14-16mm (9/16" – 5/8")	10.5-12mm (13/32" - 1/2")
Standard roll options	10 x 0.6m (33' x 2')	10 x 0.6m (33' x 2')
	10 x 0.91m (33' x 3')	10 x 0.91m (33' x 3')
	5 x 1.2m (16'6" x 4')	5 x 1.2m (16'6" x 4')
Standard module option	0.8 x 1.2m (2'7" x 4')	
	1 x 1.5m (3'3" x 4'11")	
	1.1 x 2m (3'7" x 6'7")	
Weight	10.5 kg/m <sup>2</sup> (2lbs/sq.ft)	8.7kg/m <sup>2</sup> (1.6lbs/sq.ft)

Surface modules are supplied with factory fitted PVC ramped edging to four sides

### Tolerances:

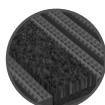
	Height (+/- 0.5mm)	Length (0+0.3mm)	Width (0+2mm)
Frontrunner Plus	14/16 mm	10 m	60 cm 91 cm
	14/16 mm	5 m	120 cm
Frontrunner Plus Low Profile	10.5/12 mm	10 m	60 cm 91 cm
	10.5/12 mm	5 m	120 cm

All dimensions are nominal

### Colours:



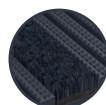
Black



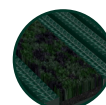
Dark grey



Dark brown



Oxford blue



Green

More colours  
available  
upon request

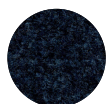
### Carpets:



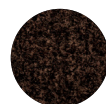
Black 608



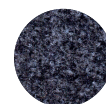
Dark grey 607



Blue 602



Brown 605



Grey 606



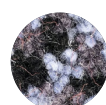
Slate



Basalt



Green



Grey



Sandstone

## Data sheet

### PVC grid technical information:

<b>Acoustic</b>	Excellent sound absorption
<b>Chemical</b>	Resistant to most acids, alkalines and oils.
<b>Composition</b>	Flexible Polyvinyl Chloride (PVC)
<b>Environment</b>	We don't use any substances included in the SVHC list under REACH in any of our matting products. Phthalate Free.
<b>Fire</b>	Fronrunner Plus: EN ISO 13501-1:2007-Cfl-S1, ASTM E648 – Class 1 Fronrunner Plus Low Profile: EN ISO 13501-1:2007-Cfl-S2
<b>Reversion</b>	Thermoplastic shrinkage can result in size reductions up to 2%. This may be accelerated in hot environments.
<b>Slip resistance</b>	ASTM E303 Dry/Wet with lines along–lines across 72-97 / 65-81
<b>Thermal</b>	Designed to function at temperatures from -23°C and up to +60°C. Slight size variation may occur at temperature extremes.
<b>UV light</b>	Resistant to PVC degradation
<b>Warranty</b>	Fronrunner Plus: three years. Fronrunner Plus Low Profile: two years.

### Absorbent inserts (Zeno 600 series) technical information:

<b>Wear classification</b>	EN 1307 - 33, Commercial heavy
<b>Pile material</b>	ECONYL®, 100% regenerated polyamide BCF
<b>Tuft base</b>	100% regenerated non woven polyester Colback™
<b>Phthalate Free backing</b>	Waterproof Comfort™ vinyl
<b>Total height</b>	EN 1765 ± 8.7 mm
<b>Pile height</b>	EN 1766 ± 6.7 mm
<b>Total weight</b>	EN 8543 ± 4260 g/m <sup>2</sup>
<b>Pile yarn weight</b>	± 820 g/m <sup>2</sup>
<b>Pile density</b>	± 0,127 g/cm <sup>3</sup>
<b>Fire</b>	EN ISO 13501-1:2007 Cfl-S1
<b>Suitable for castor chairs</b>	EN 985 A, intensive use r=2.8
<b>Colours</b>	10

### Installation:

Fronrunner Plus' one-piece construction means installation is simple:

- Cut to fit on site – no special tools or previous site visits needed
- Integrates with all internal floor coverings
- Fits with different well depths
- Contours to the floor

[Watch](#) or download the [recessed entrance matting installation](#)

### Cleaning:

Keeping Fronrunner Plus looking good is easy:

- Reduces cleaning intervals
- Simply roll or lift to clean
- No special tools needed
- Easy to vacuum

[Watch](#) or [download](#) the the cleaning instructions.

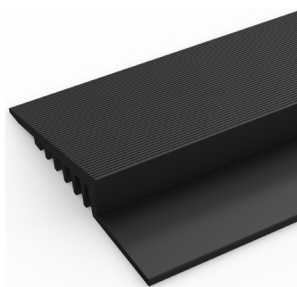


## Data sheet

### Ancillaries:

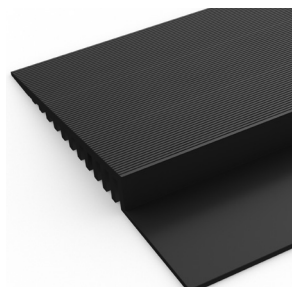
#### > For surface mounted installations

##### PVC edging (H: 14mm, W: 60mm)



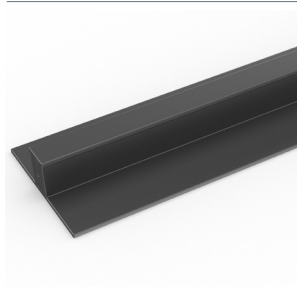
Supplied in rolls of 10.1m (33') length with cold welding paste. Comes in black, dark grey, dark brown, holly green, Oxford blue, yellow. Size: 14mm x 60mm x 10.1m (9/16" x 2 1/2" x 33')

##### PVC edging (H: 14mm, W: 100mm)



Supplied in rolls of 10.1m (33') length with cold welding paste. Comes in black, dark grey and yellow. Size: 14mm x 100mm x 10.1m (9/16" x 3 3/4" x 33')

##### PVC snap track (H: 14mm)



Two-part snap track that can be welded together to join rolls end-to-end or side-to-side to cover large areas. Supplied with cold welding paste. Comes in black and dark grey. Size: 14mm x 2.5m (9/16" x 8'2").

##### Aluminium edging (H: 15mm)



Supplied in sections of 2m (6'6") length with fixing screws and plugs. Comes in anodised aluminium and powder coated yellow. Size: 15mm x 45mm x 2m (9/16" x 1 13/16" x 6'6")

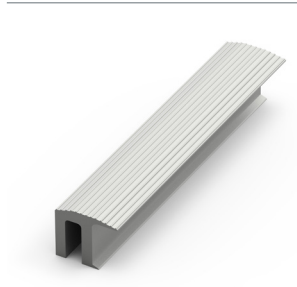
##### Connector clips: side-to-side (H: 14mm)



For joining sections of low profile matting together side-to-side. Supplied in packs of 10

#### > For recessed installations

##### R frame (H: 14mm)



You'll need these to secure the matting on the left-to-right edges. Supplied in sections of 3m (10') length with fixing screws and plugs. Comes in anodised aluminium, powder coated dark grey and black. Size: 14mm x 12mm (9/16" x 15/32")

##### J frame (H: 18mm)



Installing Frontrunner against a wall? You'll need a J frame to secure the matting on the left-to-right edges. Supplied in sections of 3m (10') length with fixing screws and plugs. Comes in dark grey and black. Size: 18mm x 60mm (11/16" x 2 3/8")

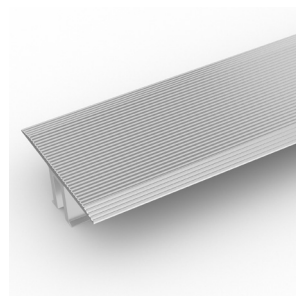
### Ancillaries:

#### T frame (H: 14mm)



You can use a T frame (27mm) to divide the matting into sections left-to-right – this makes it easier to lift and clean. Supplied in sections of 3m (10') length with fixing screws and plugs. Comes in anodised aluminium, powder coated dark grey and black

#### TL frame (H: 14mm)



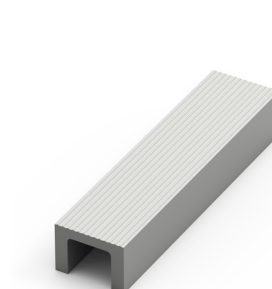
You can use a T/L frame (55mm) to divide the matting into sections left-to-right – this makes it easier to lift and clean. Supplied in sections of 3m (10') length with fixing screws and plugs. Comes in anodised aluminium

#### H section (H: 14mm)



If the front-to-back dimension of the mat well is greater than the final width of your matting, you may need a H section to secure the different sections together. Supplied in sections of 3m (10') length, with fixing screws and plugs. Comes in black, with mat insert colour specified. Size: 14mm x 13mm (9/16" x 1/2")

#### U section (H: 14mm)



If the front-to-back dimension of the mat well is greater than the final width of your matting, you may need a U section to secure the different sections together. Supplied in sections of 3m (10') length, with fixing screws and plugs. Comes in anodised aluminium, powder coated dark grey and black. Size: 14mm x 19mm (9/16" x 3/4")

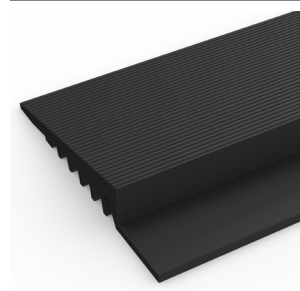
#### L frame (H: 15mm)



Installing around a circular door or non rectangular space? You'll need a L frame to secure the matting. Size: 15mm x 2.7m length (5/18" x 8')

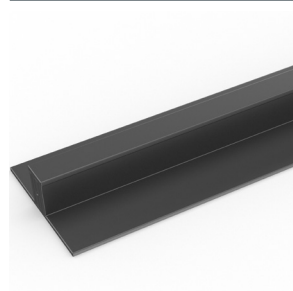
### > For surface mounted installations: Low profile

#### PVC edging (H: 10mm, W: 50mm)



Supplied in rolls of 10.1m (33') length with cold welding paste. Comes in black and dark grey. Size: 10mm x 50mm x 10.1m (3/8" x 2" x 33')

#### PVC snap track (H: 10.5mm)



Two-part snap track that can be welded together to join rolls end-to-end or side-to-side to cover large areas. Supplied with cold welding paste. Comes in dark grey. Size: 10.5mm x 2.5m (13/32" x 8'2")

## Data sheet

### Ancillaries:

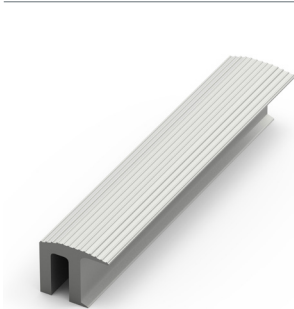
Connector clips: side-to-side (H: 10mm)



For joining sections of low profile matting together side-to-side. Supplied in packs of 10

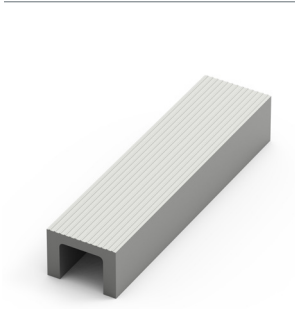
> For recessed installations: Low profile

R frame (H: 10mm)



You'll need these to secure the matting on the left-to-right edges. Supplied in sections of 3m (10') length with fixing screws and plugs. Comes in anodised aluminium, powder coated dark grey and black. Size: 10mm x 12mm (3/8" x 15/32")

U section (H: 10mm)



If the front-to-back dimension of the mat well is greater than the final width of your matting, you may need a U section to secure the different sections together. Supplied in sections of 3m (10') length, with fixing screws and plugs. Comes in anodised aluminium, powder coated dark grey and black. Size: 10mm x 18mm (3/8" x 11/16")

H section (H: 10mm)



If the front-to-back dimension of the mat well is greater than the final width of your matting, you may need a H section to secure the different sections together. Supplied in sections of 3m (10') length, with fixing screws and plugs. Comes in black, with mat insert colour specified. Size: 10mm x 13mm (3/8" x 1/2")

Z frame (H: 10mm)



Installing matting next to ceramic tiles? You'll need a Z frame to secure the matting. Supplied in sections of 3.6m (11') length with fixing screws and plugs. Comes in anodised aluminium, powder coated dark grey and black. Size: 10mm x 24mm (3/8" x 15/16")