

# Frontrunner Brush

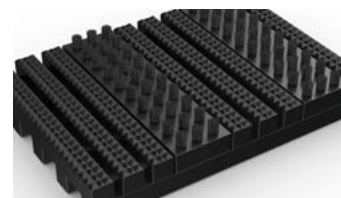


External entrance matting with heavy-duty brush inserts for maximum dirt removal.



**Stop snow, ice and dirt in its tracks with Frontrunner Brush, an extra aggressive entrance mat designed for extreme weather conditions.**

Heavy-duty brush strips scrape shoes clean, while the open grid traps and collects the debris, preventing it from being walked inside. Frontrunner Brush works as a standalone entrance mat, or you can pair it with a mat specifically designed for inside, like Frontrunner Plus.



## Features:



Diamond cut pattern



Two layer open-grid construction



Nylon brush inserts



Comes in 10m (33') rolls or modules



Made from flexible PVC



## Benefits:



Slip resistant, high soil removal



Excellent drainage



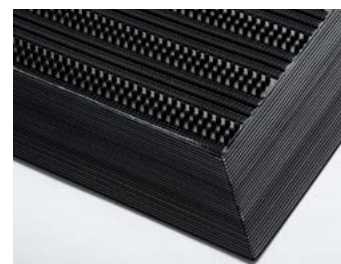
Scrapes shoes clean



Seamless installation



Easy to cut to fit on site, contours to uneven surfaces



## Excel Matting

Barrie Woodcock

bwexcel@outlook.com

07885 769296



UK manufactured matting products

# Fronrunner Brush

## Data sheet



### Standard sizes:

|                         |                                       |
|-------------------------|---------------------------------------|
| Product                 | Fronrunner Brush                      |
| Height                  | 14 - 19mm (9/16" - 3/4")              |
| Standard roll options   | 10 x 0.6m (33' x 2')                  |
|                         | 10 x 0.91m (33' x 3')                 |
|                         | 5 x 1.2m (16'6" x 4')                 |
| Standard module options | 0.8 x 1.2m (2'7" x 4')                |
|                         | 1 x 1.5m (3'3" x 4'11")               |
|                         | 1.1 x 2m (3'7" x 6'7")                |
| Weight                  | 12.7 kg/m <sup>2</sup> (2.6 lb/sq.ft) |

Surface modules are supplied with factory fitted PVC ramped edging to four sides.

### Tolerances:

|                  | Height (+/- 0.5mm) | Length (0+0.3mm) | Width (0+2mm)  |
|------------------|--------------------|------------------|----------------|
| Fronrunner Brush | 14/19 mm           | 10 m             | 60 cm    91 cm |
|                  | 14/19 mm           | 5 m              | 120 cm         |

All dimensions are nominal

### PVC grid technical information:

|             |                                                                                                                           |
|-------------|---------------------------------------------------------------------------------------------------------------------------|
| Acoustic    | Excellent sound absorption                                                                                                |
| Chemical    | Resistant to most acids, alkalines and oils.                                                                              |
| Composition | Flexible Polyvinyl Chloride (PVC)                                                                                         |
| Environment | We don't use any substances included in the SVHC list under REACH in any of our matting products. Phthalate free.         |
| Fire        | EN ISO 13501-1:2007-Cfl-S2. Nylon brush fibres: UL94-V2                                                                   |
| Reversion   | Thermoplastic shrinkage can result in size reductions up to 2%. This may be accelerated in hot environments.              |
| Thermal     | Designed to function at temperatures from -23°C and up to +60°C. Slight size variation may occur at temperature extremes. |
| UV light    | Resistant to PVC degradation                                                                                              |
| Warranty    | Two years.                                                                                                                |

### Nylon brush inserts technical information:

|                  |                         |
|------------------|-------------------------|
| Construction     | Aligned tufting         |
| Bristle diameter | 0.3mm                   |
| Insert thickness | 12mm                    |
| Bristle content  | Nylon 6.6 monofilaments |
| Bristle height   | 4.5mm                   |
| Backing          | PVC                     |

# Frontrunner Brush

## Data sheet



### Colours:



Black



Dark grey

More colours  
available  
upon request

### Installation:

Frontrunner Brush's one-piece construction means installation is simple:

- No special tools or previous site visits
- Fits with different well depths
- Contours to the floor

[Watch](#) or download the [recessed entrance matting installation instructions](#) and the [surface-mounted installation instructions](#).

### Cleaning:

Keeping Frontrunner Brush looking good is easy:

- Reduces cleaning intervals
- Simply roll or lift to clean
- No special tools needed
- Easy to clean using a vacuum, plus a coarse brush for clearing the debris in the grid

[Watch](#) or [download](#) the the cleaning instructions.

### Ancillaries:

#### > For surface mounted installations

PVC edging (H: 14mm, W: 60mm)



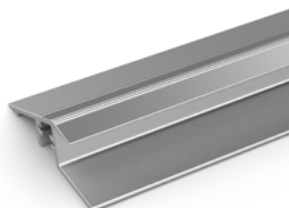
Supplied in rolls of 10.1m (33') length with cold welding paste. Comes in black, dark grey, dark brown, holly green, Oxford blue, yellow. Size: 14mm x 60mm x 10.1m (9/16" x 2 1/2" x 33')

PVC edging (H: 14mm, W: 100mm)



Supplied in rolls of 10.1m (33') length with cold welding paste. Comes in black, dark grey and yellow. Size: 14mm x 100mm x 10.1m (9/16" x 3 3/4" x 33')

Aluminium edging (H: 14mm)



Supplied in sections of 2m (6'6") length with fixing screws and plugs. Comes in anodised aluminium and powder coated yellow. Size: 14mm x 45mm x 2m (9/16" x 1 13/16" x 6'6")

PVC snap track (H: 14mm)



Two-part snap track that can be welded together to join rolls end-to-end or side-to-side to cover large areas. Supplied with cold welding paste. Comes in black and dark grey. Size: 14mm x 2.5m (9/16" x 8'2").

### Ancillaries:

#### > For recessed installations

##### R frame (H: 14mm)



You'll need these to secure the matting on the left-to-right edges. Supplied in sections of 3m (10') length with fixing screws and plugs. Comes in anodised aluminium, powder coated dark grey and black. Size: 14mm x 12mm (9/16" x 15/32")

##### T frame (H: 14mm)



You can use a T frame (27mm) to divide the matting into sections left-to-right – this makes it easier to lift and clean. Supplied in sections of 3m (10') length with fixing screws and plugs. Comes in anodised aluminium, powder coated dark grey and black

##### H section (H: 14mm)



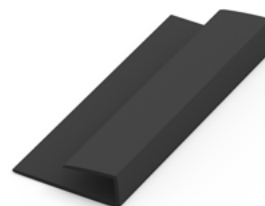
If the front-to-back dimension of the mat well is greater than the final width of your matting, you may need a H section to secure the different sections together. Supplied in sections of 3m (10') length, with fixing screws and plugs. Comes in black, with mat insert colour specified. Size: 14mm x 13mm (9/16 x 1/2")

##### L frame (H: 15mm)



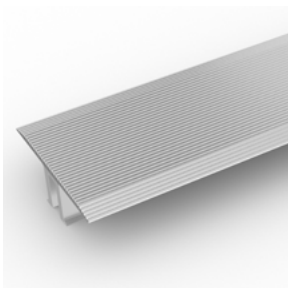
Installing around a circular door or non rectangular space? You'll need a L frame to secure the matting. Size: 15mm x 2.7m length (5/8" x 8')

##### J frame (H: 18mm)



Installing Fronrunner against a wall? You'll need a J frame to secure the matting on the left-to-right edges. Supplied in sections of 3m (10') length with fixing screws and plugs. Comes in dark grey and black. Size: 18mm x 60mm (1 1/16" x 2 3/8")

##### TL frame (H: 14mm)



You can use a T/L frame (55mm) to divide the matting into sections left-to-right – this makes it easier to lift and clean. Supplied in sections of 3m (10') length with fixing screws and plugs. Comes in anodised aluminium

##### U section (H: 14mm)



If the front-to-back dimension of the mat well is greater than the final width of your matting, you may need a U section to secure the different sections together. Supplied in sections of 3m (10') length, with fixing screws and plugs. Comes in anodised aluminium, powder coated dark grey and black. Size: 14mm x 19mm (9/16" x 3/4")