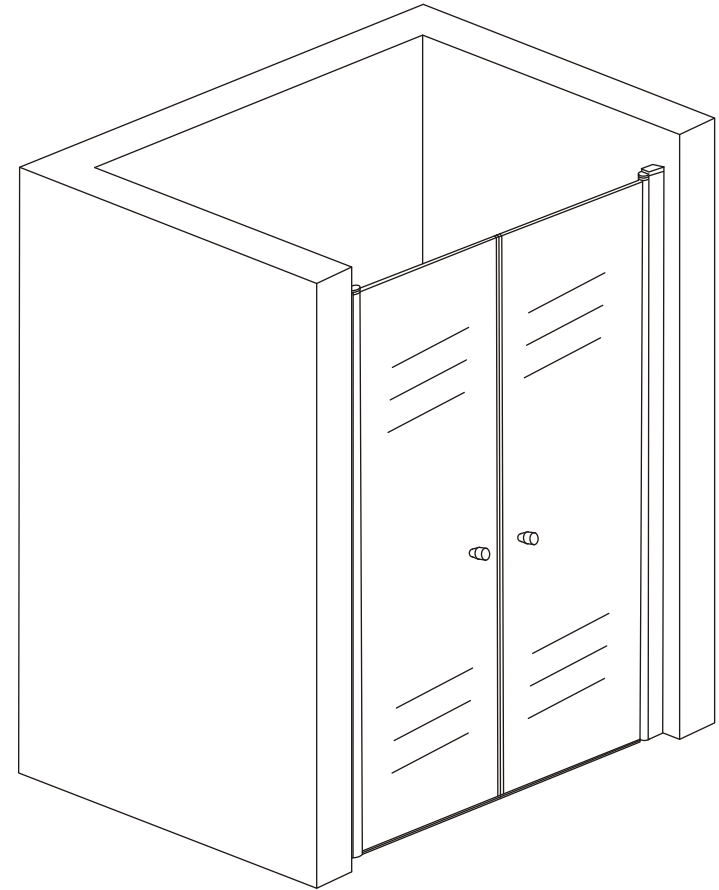


INSTALLATION MANUAL

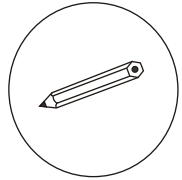


3571/3572/3573/3574/3575/3576/3577
3578/3579/3580/3581/3582/3583/3584

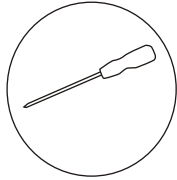
RoHS  **ISO9001:2000**

1. Use 3.2mm drill bit to make two holes on the aluminium and use screws to fix.
2. Install handle on the door.

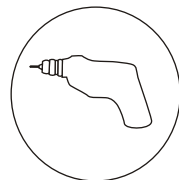
TOOL PICTURE



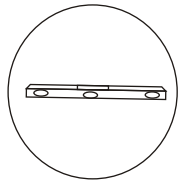
Pencil



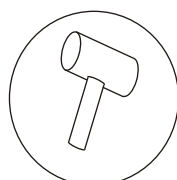
Cross screw driver



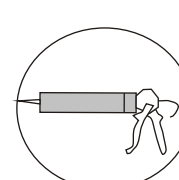
Drill machine



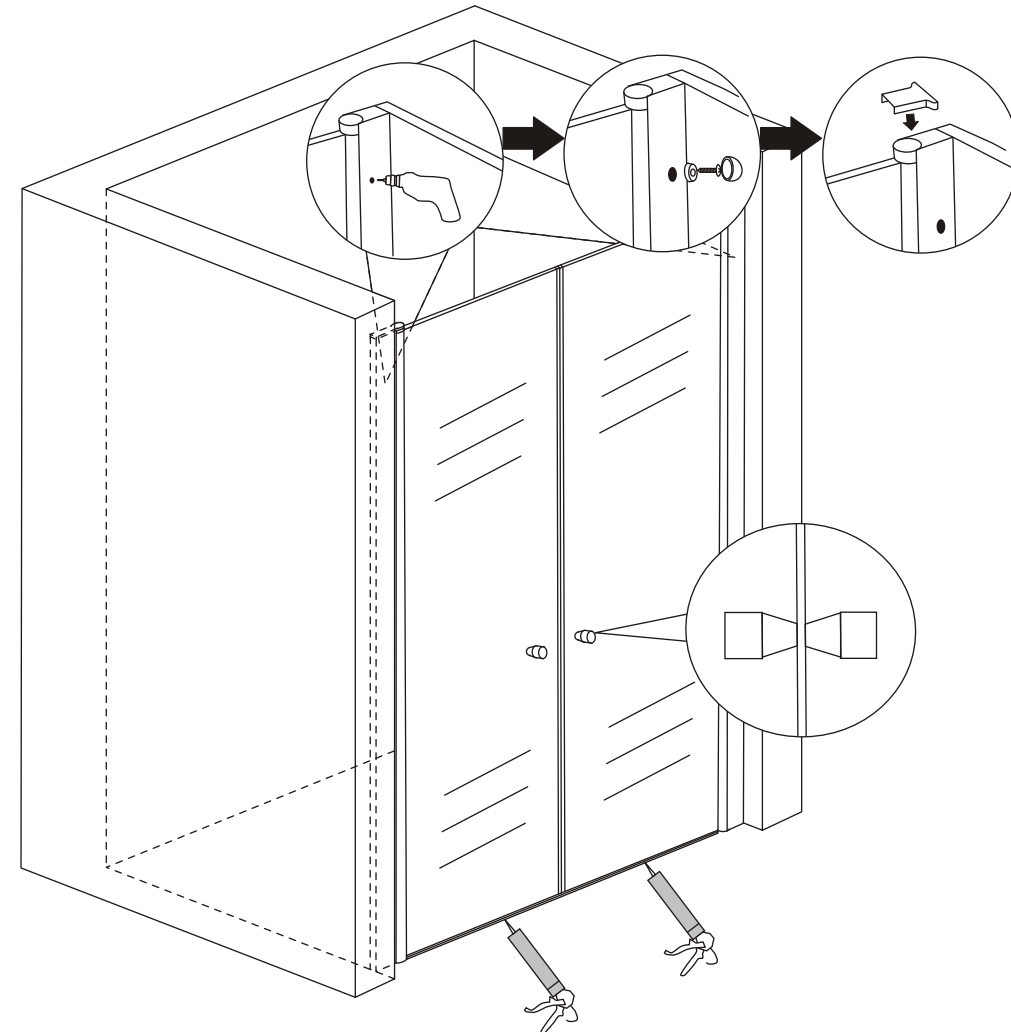
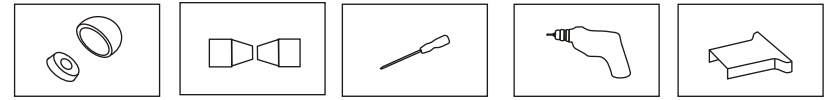
Level ruler



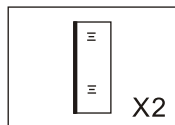
Rubber hammer



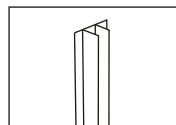
Silicon gel



Accessory list



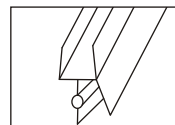
Glass



Wall profile



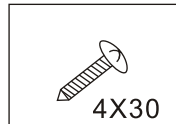
CT-6BMX90



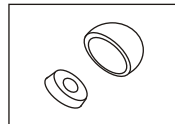
CT-6YXJT-029



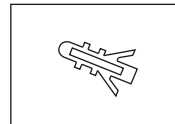
Screw



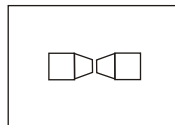
Screw



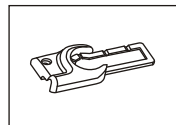
PJ-4553



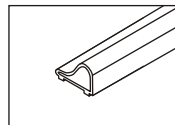
Expand tube



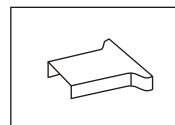
LS-1201



Aluminum
bottom bar

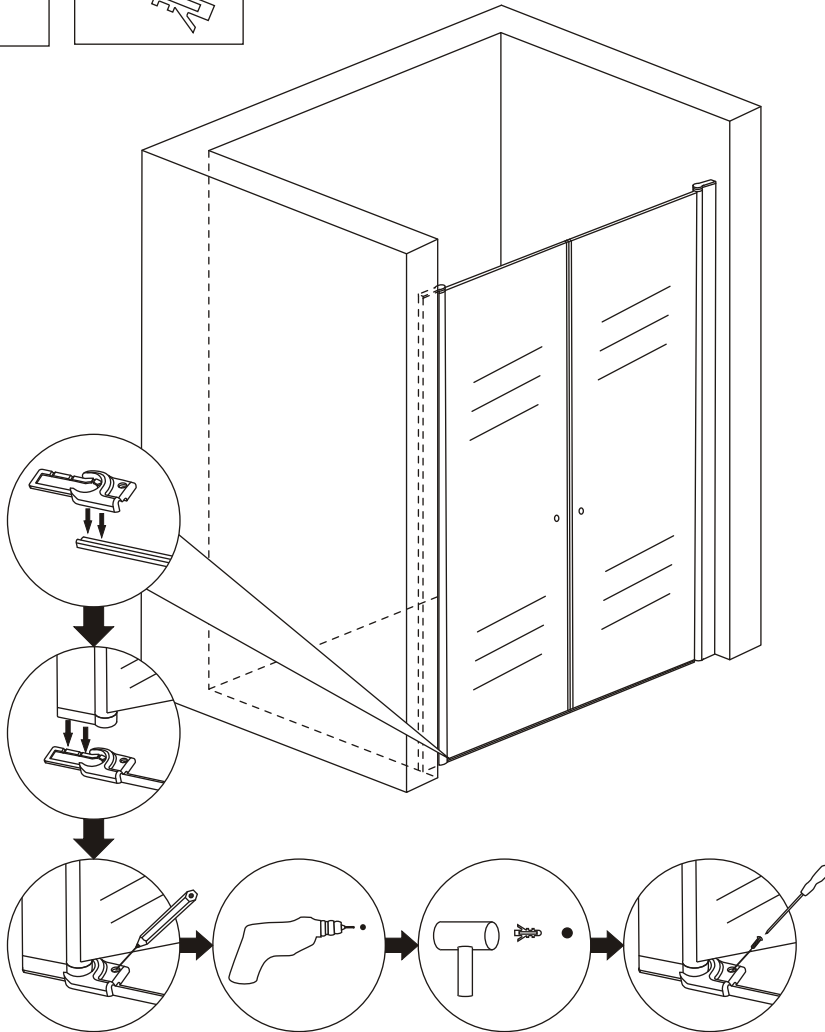
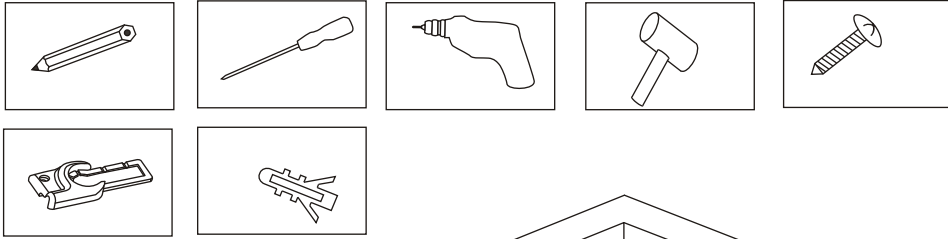


PJ-4644



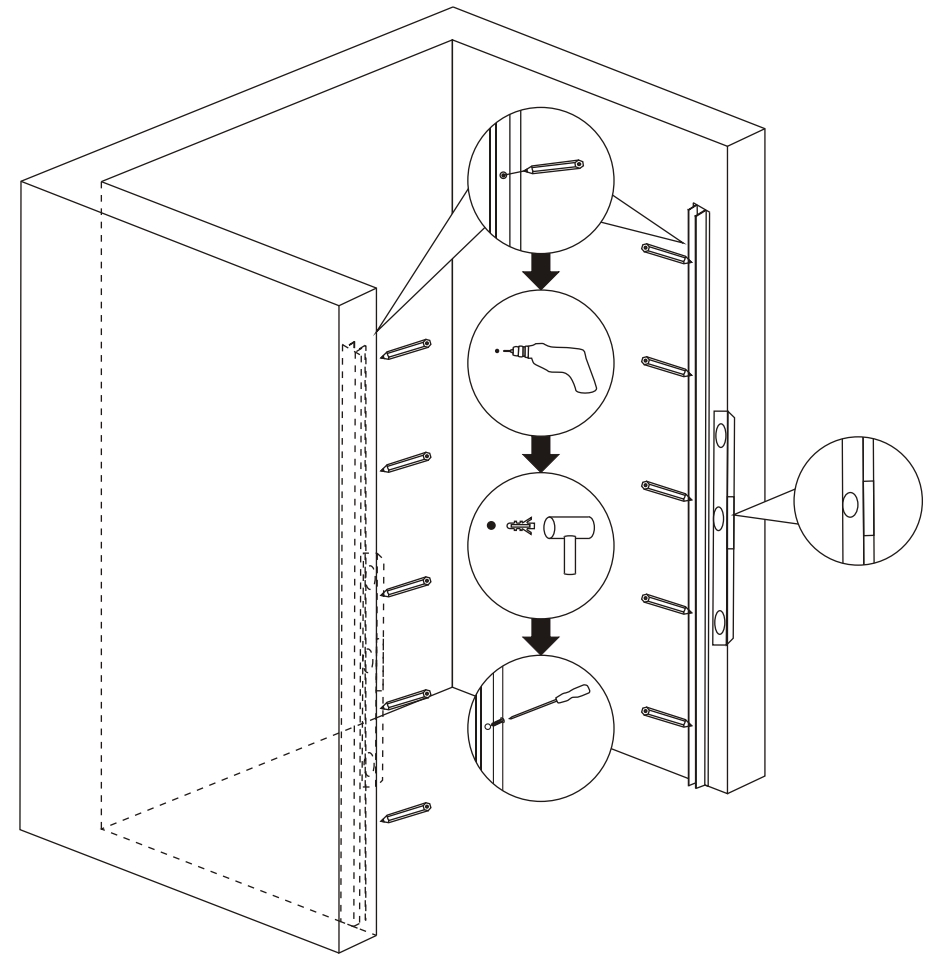
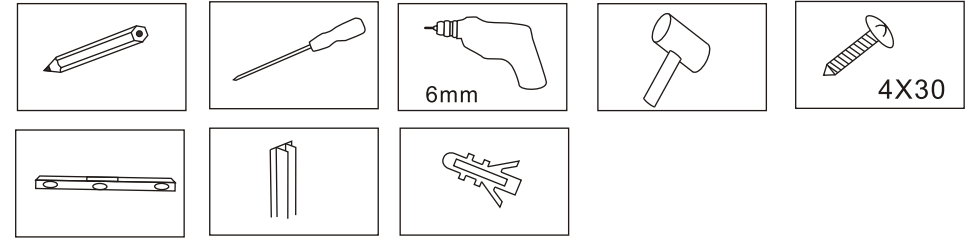
PJ-4643

1. Insert one glass door to the wall aluminum profile.
2. Install the decorating parts on the water-proof aluminum profile.
Insert the glass door into the decorating parts. Make sure the install position of the aluminum profile decorating parts, then paint line, punching, insert the expansion screws, tighten the screws and fixed the decorating parts.



5

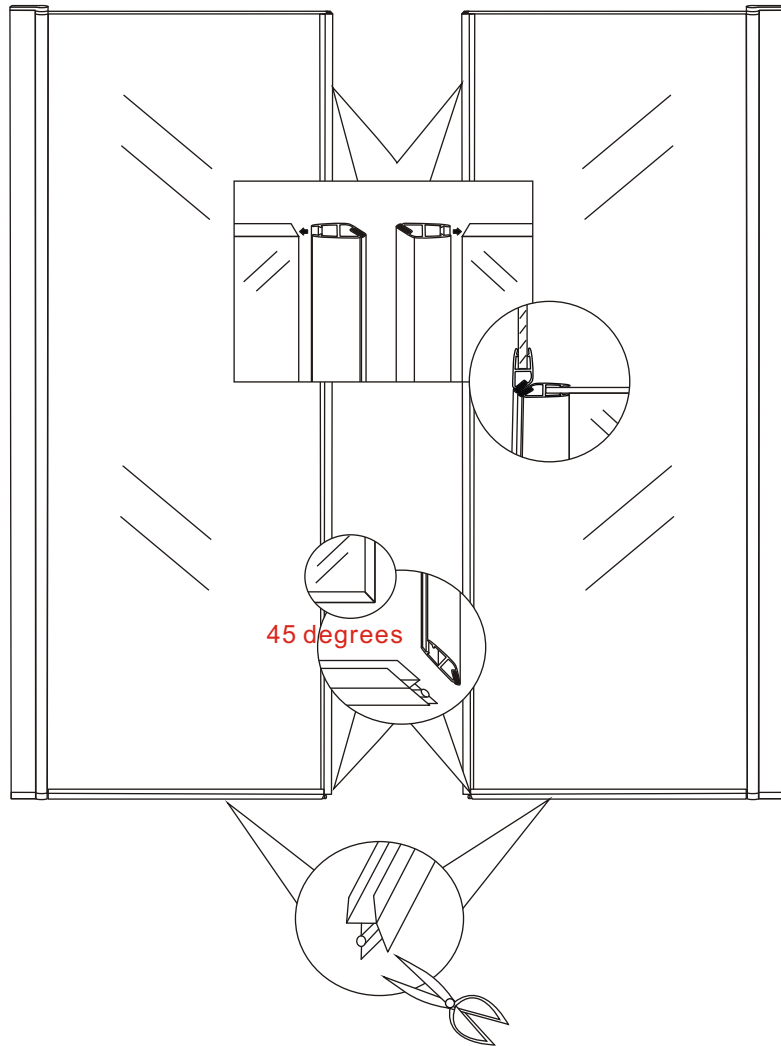
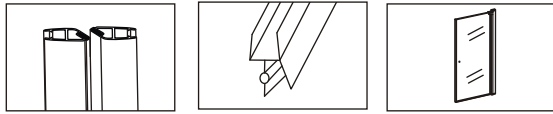
1. Put aluminium profile on the wall and use level ruler to make it straight.
2. Use pencil draw holes on the wall.
3. Use 6mm drill bit to make holes on the wall.
4. Insert screw space pipe in the wall and screw it.



2

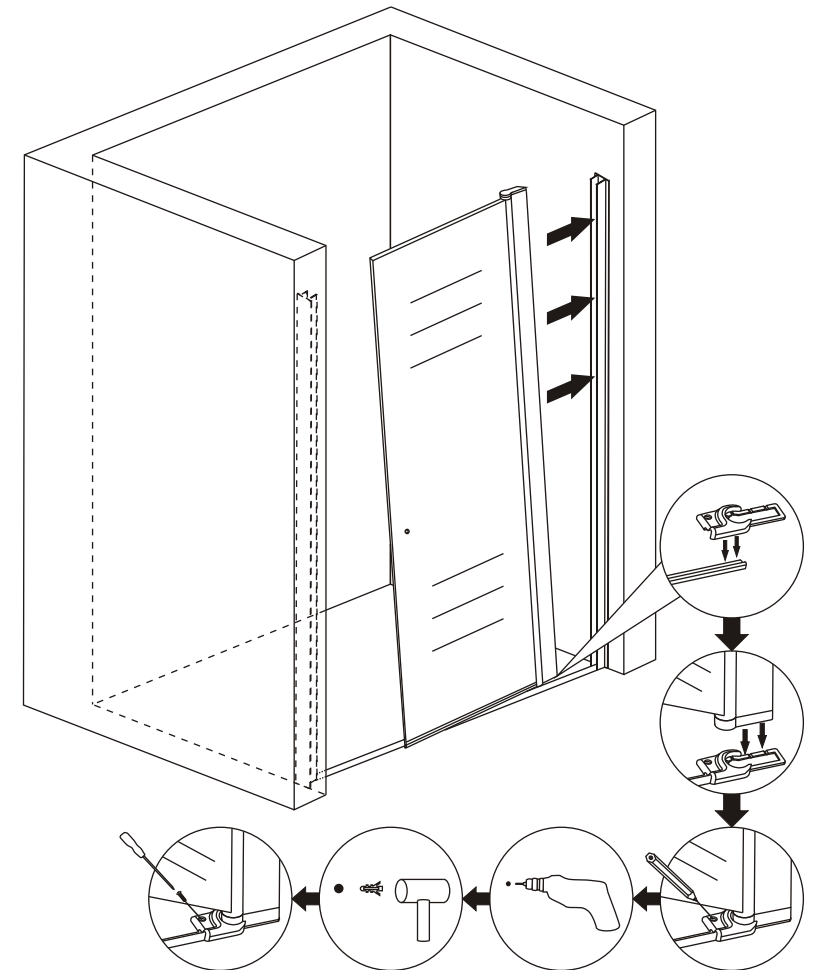
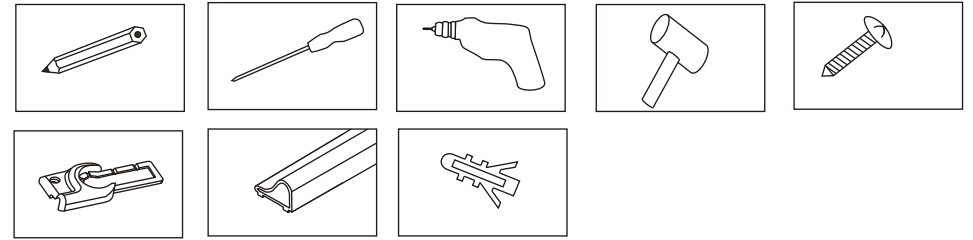
1. Install the gasket at the bottom of glass.
2. Cut the length and angle of the water-proof gasket according to the actual situation, then install it.

Pls take note: when install the door magnetic stripe and the bottom waterproof strip, cut 45 degrees each of them, so that the corner of door magnetic stripe and the bottom waterproof strip can be fitted well.



3

1. Insert one glass door to the wall aluminum profile.
2. Install the decorating parts on the water-proof aluminum profile. Insert the glass door into the decorating parts. Make sure the install position of the aluminum profile decorating parts, then paint line, punching, insert the expansion screws, tighten the screws and fixed the decorating parts.



4