

This Quick Start Guide is designed for two or more operators. Please see the Full Operators Manual for single operator and more detailed information.

Full Operators Manual

Health & Safety / Regulations
Technical Specification
Operational Constraints
Maintenance & Troubleshooting
Service & Support



STEP 1 - CHECK THE MOVER BEFORE USE.

- Check that all bolts are tight
- Check the Mover and straps are not damaged and remain fit for purpose.
- Check tyres are at 30psi.



STEP 2 - PUMP DELIVERED, UNPACK THE HEAT PUMP

- Remove and recycle pump all packing materials.



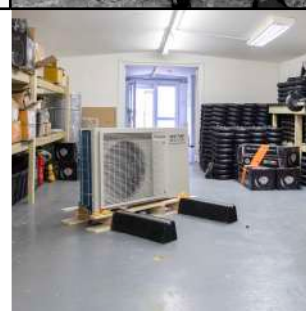
STEP 3 - PREPARE THE PUMP TO MOVE

- Unbolt the pump from the pallet



STEP 4 - POSITION RUBBER FEET

- Position the rubber feet next to the pump -
- Bolt the rubber foot to the fan end
- Rest the pump on the compressor end.



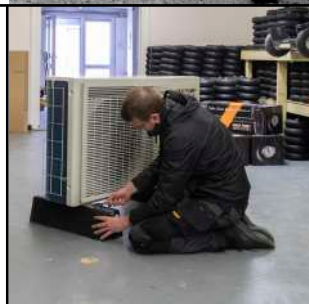
STEP 5 - LIFT THE PUMP ON RUBBER FEET

- Lift the compressor / heavy end of the pump, remove the rubber foot and slide the Mover into place. Lowering the pump metal foot into Mover baseboard recess.
- Use the pump lift straps provided with the pump, carefully lift the pump onto the rubber feet.



STEP 6 - BOLT THE RUBBER FOOT TO THE FAN END.

- Using the bolts provided with the pump, secure the rubber foot to the pump.



STEP 7 - PREPARE THE MOVER - ATTACH THE PULL STRAP.

- Attach the Pump Pull Strap to the Mover Carry Handle with a Honda Knot.



HONDA KNOT



STEP 8 - LIFT THE PUMP ONTO THE RUBBER FEET

- Lift the compressor / heavy end of the pump, remove the rubber foot and slide the Mover into place. Lowering the pump metal foot into Mover baseboard recess.
- Use the pump lift straps provided with the pump, carefully lift the pump onto the rubber feet.



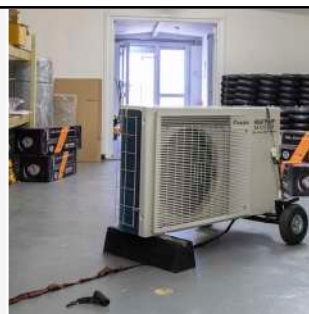
STEP 9 - SECURE THE PUMP TO THE MOVER

- Use the Pump Securing Straps provided, ratchet to tighten the pump so it cant lift / move.



STEP 10 - PREPARE THE PULL STRAP

- Using the pump lift straps provided, lift the pump fan / light end - slide Pump Pull Strap to the front of the pump, under the rubber foot.



STEP 11 - PREPARE TO PULL THE PUMP

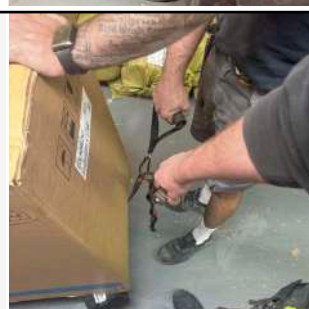
- Attach the Pull Handle to the correct Pull Strap loop to ensure, with a straight arm, you can lift the weight of the pump with your legs.



HEALTH & SAFETY NOTE.

If pump lift weight exceeds HSE Guidelines (25Kg) two operators should pull the pump. This is achieved by fitting two Pull Handles to the Pull Strap - ensuring the height of each pull handle is correct for both operators (as above).

The pull handles are attached to the pump pull strap to facilitate easy movement



STEP 12 - FINGUARD (OPTIONAL)

- We provide a Heat Pump FinGuard that is attached to your wrist / pull strap, preventing any damage to the pump fins during the pull.



STEP 13 - PREPARE TO LIFT THE PUMP

- When lifting the pump - you must create a triangle by using your free hand to hold the top of the pump. This will give you the best control over the pump when moving.



STEP 14 - PULL THE PUMP

- Pull or Push the pump to its final location.
-



STEP 15 - PULL COMPLETE

- Maneuver the pump along side the final location.



STEP 16 - REMOVING THE MOVER

- Unstrap the Pump Securing Straps
- Lift the Pump with the straps provided with the pump.
- Slide the Mover out from under the pump.
- Slide and secure the rubber foot.



Support: For any help or support, please contact us at -

- sales@heatpumpmover.co.uk or
- call on 01252 926487