

# TIER<sup>®</sup>

- MULTIPACK
- CONTEMPORARY
- CARE & MAINTENANCE
- ASSOCIATED PRODUCTS
- INSTALLATION

Natural Stone **Made Simple**





## CONTENTS

---



TIER® PANEL SYSTEM - MULTIPACK



TIER® PANEL SYSTEM - CONTEMPORARY



TIER® CARE & MAINTENANCE



TIER® ASSOCIATED PRODUCTS



INSTALLATION

---

# WHAT IS TIER?

Tier is a real stone panelling system specifically designed to create a distinctive, natural stone finish wherever it is used.

The panels rise in interlocking 'tiers', fitting seamlessly together, eliminating the need for specialist labour and making Tier a quick and easy system to use.

Each product is made from natural stone which is ideal for interior and exterior applications, and has been developed over years of experience.

TIER® Systems are designed to combine the timeless beauty and durability of real stone, with the ease of installation using thin stone veneers or panels. To achieve this we use handpicked stones for each product, which are then dressed by our expert stone masons before being placed into the moulds. TIER® Systems are recognized for their quality and natural beauty. Using natural limestone, slate, quartz, granite, basalt and sandstone our masons adhere to strict guidelines to create products with subtle colour blends, but maintaining traditional masonry methods which produce a consistent and authentic appearance. All our products have to pass stringent quality control procedures as well as meeting colour variance guidelines. These standards ensure a high quality product and result in a stunning finish on any application.

We continually develop natural stone solutions for the walling sector using traditional and innovative methods to deliver new products and colours. We also pride ourselves on our professional and personal customer service. This enables us to service a broad range of customers with modern and contemporary designs, and solutions for both large and small building projects.





# WHY USE TIER®?

## Authentic

As Tier is made from natural stone, it bears all the form and character of a dry-stone wall. The simple yet clever, 'Z' formation of Tier Panel System allows each section to interlock seamlessly together producing all the charm and elegance of a natural stone surface.



## Versatile

The applications for Tier are endless. Its simple installation means it can be incorporated into both commercial and residential environments, adding beauty to either an entire structure or a small feature.



## Elegant

Part of what makes Tier unique is its sizing. Each panel is deeper than other standard stone systems currently available, which allows the panels to have a greater variety of stone sizes, creating a realistic and authentic finish.

## Simple

This panel system has been designed to achieve the look of a stone wall without the need for a qualified stonemason. No specialist skills are required to install Tier, which is why it is popular with contractors and developers alike.



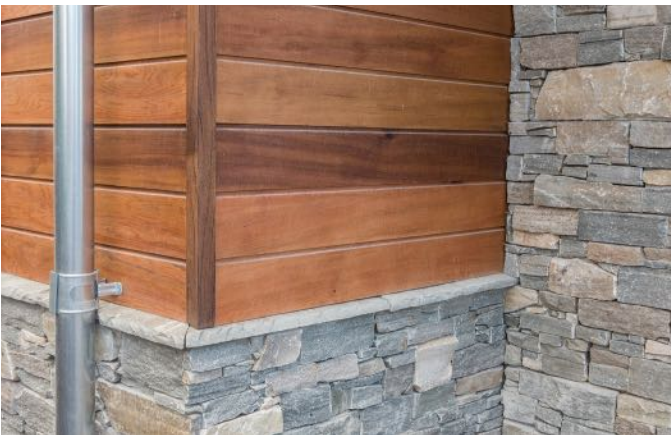


## Economical

As well as reduced labour costs, Tier has the advantage of producing less waste during construction. Whilst traditional stone walling can have up to 25% wastage, Tier has virtually none.

## Efficient

The modular design utilizes the time taken to build stone walling.. With TIER, it is possible to install up to 30m2 per day. This compares with 3m2 for Random Rubble Walling.



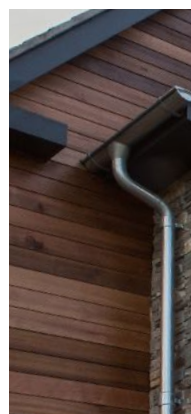
## Guaranteed

Along with all the added benefits of Tier, comes piece of mind. Such is our confidence, TIER Panel System comes with a 25 year warranty.





TIER®





# MULTIPACK

## PANEL SYSTEM

The MultiPack Range has been developed as a universal walling system without the need of separate quoins. Its unique design means the MultiPack can be used for any Application, such as features walls, fireplaces, external entrances or commercial projects. The System comes with 4no panels per box, these panels can be used for straight areas or corners. TIER MultiPack offers the beauty and durability of natural stone, without the installation hassles, weight and high costs normally associated

with full bed natural stonework. Made from natural stone, our panel systems improve in colour and maintain their beauty and characteristics in all climates, therefore the perfect alternative to manufactured stone and traditional methods. Each panel is composed of a number of individual natural stones which have been dressed by hand and formed into panels. These modular panels fit seamlessly together, eliminating the need for specialist labour and making Tier a quick and easy system to use with virtually no waste.

## COLOUR RANGE



Multicolour



Nordic



Slate



Rustic Granite



Quartz



Thin Slate



# SPECIFICATIONS

## PANEL MEASUREMENTS

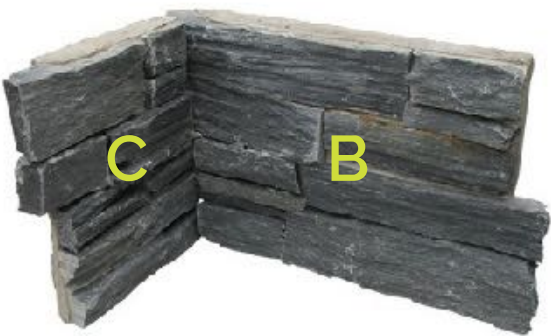
Type A 517 mm wide x 215 mm high  
Type B 317 mm wide x 215 mm high  
Type C 200 mm wide x 215 mm high  
All Panels 38 mm - 40 mm variable thickness



## EXTERNAL CORNER



## INTERNAL CORNER



**TIER**<sup>®</sup>

Natural Stone **Made Simple**

Panel Systems

MultiPack

[www.tiersystems.com](http://www.tiersystems.com)

## PACKAGING

2<sup>NO</sup> Type A  
1<sup>NO</sup> Type B  
1<sup>NO</sup> Type C  
Total Weight per Box 28 kg  
Total weight per m2 80-85 kg



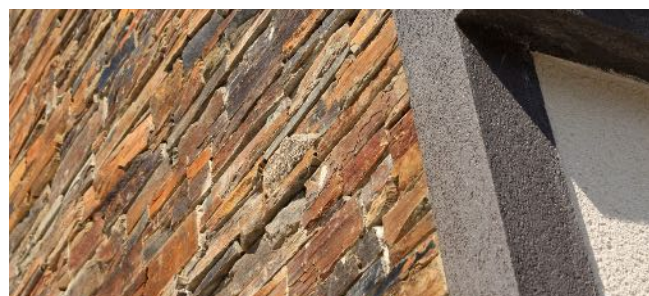
### NATURAL STONE

The Tier Panel System can achieve an extremely natural finish to corners with rock face return ends giving an organic and rugged aesthetic. If budget is a factor, then this is the more affordable option.



### RENDERED CORNERS

Tier is also effective when it comes to other aspects of the build such as windows and doors. The panel system works with rendered finishes to highlight their form and contours.



### GRANITE / BRICK QUOINS

Sandstone, limestone, granite and brick can all be used in conjunction with Tier. Each panel interlocks with the adjoining corner to produce either a vivid contrast between colour or a subtle change in texture.

# CONTEMPORARY

## PANEL SYSTEM

Our Contemporary Range is a thin stone veneer made from split face stone. The various depths and textures showcase the stones natural beauty. This three-dimensional look creates a stunning feature wall especially when illuminated. TIER® natural stone panel

system is ideal for exterior feature walls, courtyards and entertainment areas. Equally well suited for interior use, these stone panels are also perfect for use on fireplaces and feature walls. Due to its modular form, TIER Contemporary is quick and easy to install.

### RANGE



Charcoal



Ivory



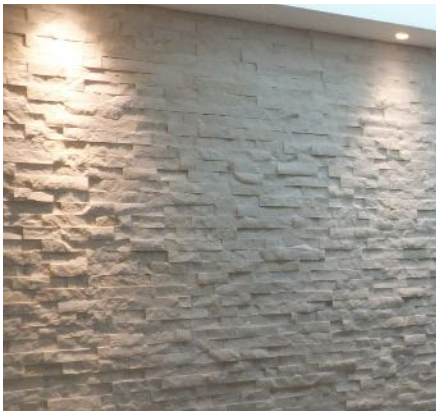
White



Ochre



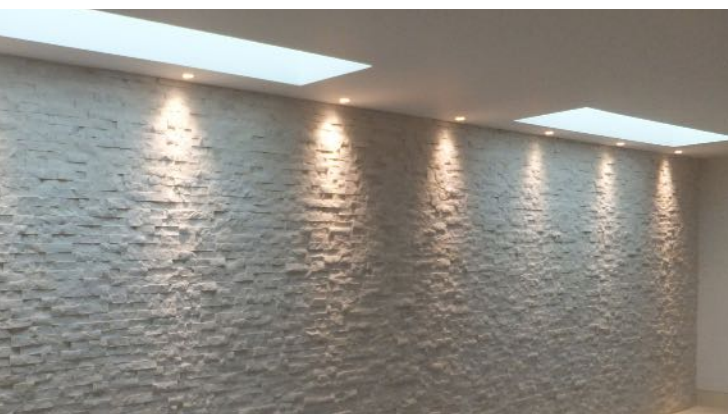
Autumn







**TIER**®





## TIER PANEL SYSTEM

Tier uses natural stone, therefore each and every modular panel is completely unique, having its own colours, sizes and textures.

## APPLICATIONS

With its natural stone rustic finish, their clean, simple and aesthetically pleasing lines, TIER Panel System can transform any room or building from a plain, uninspiring project into a stunning feature, providing the simple yet unique contemporary wherever it is used.

TIER Panel System is ideal for Interior or External applications, and can compliment many finishes such as stainless steel, glass and wood, including pools, feature walls, kitchens, porches, sunrooms, bathrooms, fireplaces, office features, restaurants, hotels, garden walls and many more...

The beauty of TIER Panel System lies in its simplicity, and whether part of a large scale commercial application, or a small residential project you will find the System a quick, easy and economical building solution.



PANEL MEASUREMENTS

Panels are 548 mm long x 152 mm high  
Corner Panels are 348 mm and 200mm long  
x 152 mm high



PACKAGING PANELS & CORNERS

Panels and corners are sold by box  
Each Box contains 0.33m2  
Each Crate contains 50 boxes  
Approximate Weight per Box 20 kg  
Approximate weight per m2 55 kg

THE CORNERS

FINGER CORNERS

TIER Contemporary corners are designed and manufactured in a way to achieve the most authentic corner possible. Each corner piece slides seamlessly together to form a realistic stone corner.



# CONTEMPORARY

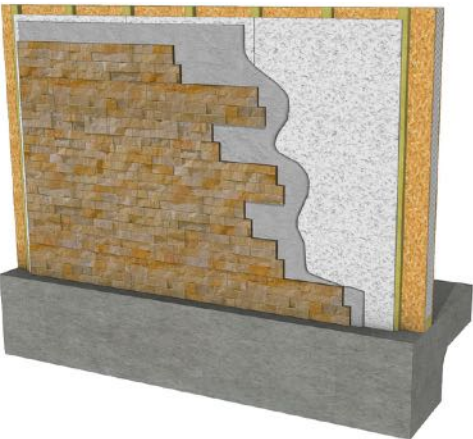
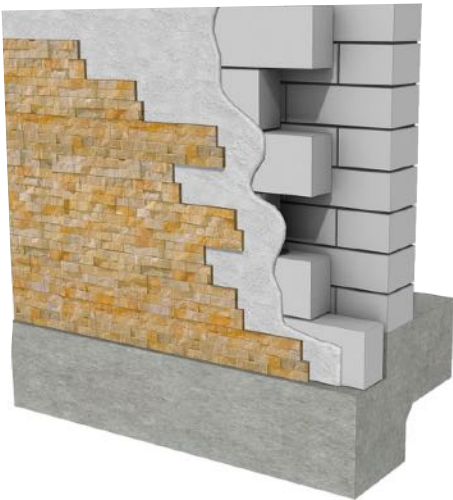
## METHODS OF CONSTRUCTION

### MODULAR SYSTEM

Tier is a modular panel system and can be fitted to various internal and external structures. Each panel is 548mm long by 152mm high and weighs approximately 55 kg per m2.

### TRADITIONAL BUILD METHOD

Tier Panel System can be attached to a new or existing concrete or block work structures using our TIER Masonry Installation System.

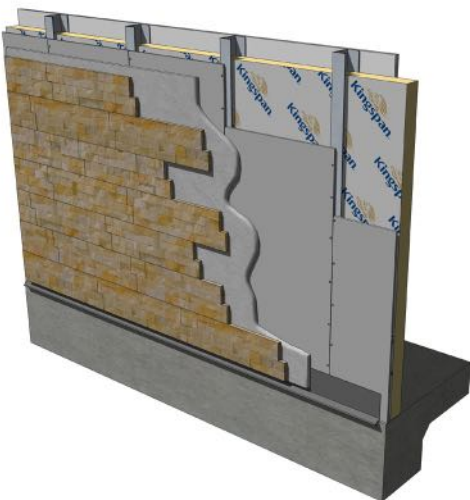


### TIMBER FRAME METHOD

Tier can also be fitted to our approved Building Board which is screwed to a Timber Frame Structure therefore eliminating the need for a structural wall.

### STEEL FRAME METHOD

The Steel Frame Method is similar to the Timber Frame, only difference being the TIER Building Board is screwed to the steel uprights.

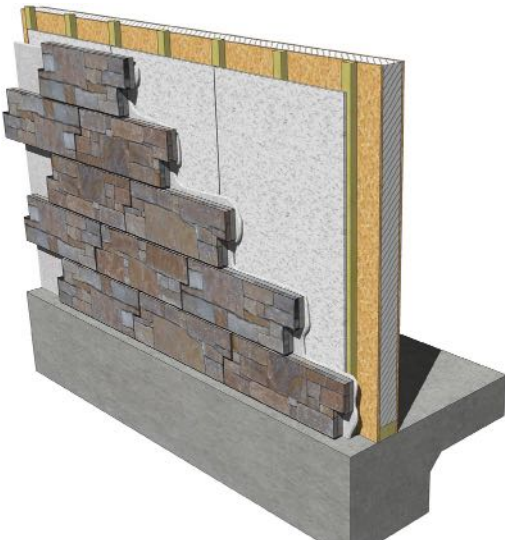
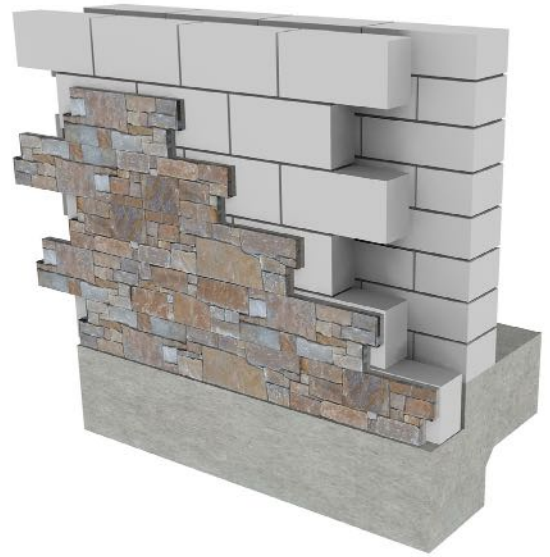




Recommended substrates onto which Tier Panel System can be fitted..

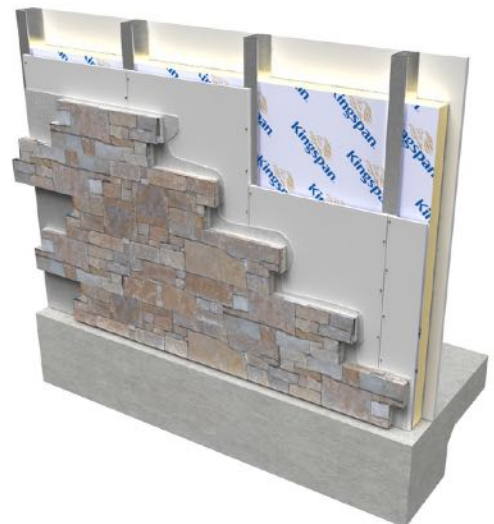
### TRADITIONAL BUILD METHOD

Tier Panel System can be attached to a new or existing concrete or block work structure s using our TIER Masonry Installation System.



### TIMBER FRAME METHOD

Tier Panel System can be fitted to our approved Building Board which is screwed to a Timber Frame Structure.



### STEEL FRAME METHOD

The Steel Frame Method is similar to the Timber Frame, only difference being the TIER Building Board is screwed to the steel uprights.

# CARE & MAINTENANCE

## CARE & MAINTENANCE



### TIER® SEALER

Water based Impregnating Sealer for Interior & exterior use. Low odour For all types of natural and artificial stone, quarry, brick & paving. Honed, rough cut and polished surfaces.

A natural finish water based impregnating sealer. Delicately enhances colour. Helps protect against staining. Strongly repels water, oil and grease. Allows surface to breathe.



### TIER® CLEANER HEAVY DUTY GRIME REMOVER

Suitable for travertine, limestone, sandstone, slate, marble, porcelain, granite, terracotta, quarry tiles, brick & external paving. Effective for removing oil, grease, ingrained dirt grime and old wax layers.



### TIER® MORTAR REMOVER HIGH PERFORMANCE INTENSIVE CLEANER

Suitable for travertine, stone, sandstone, slate, marble, porcelain, granite, terracotta, quarry, brick, concrete and external paving. A high performance intensive cleaner for stripping and cleaning of vitrified glazed ceramics, travertine, natural stone, sandstone, slate, marble, granite, terracotta, quarry, brick, concrete, external paving, terrazzo and other mineral floors & walls. Helps remove oxidised linseed oil and other mineral oils (available on request).



# ASSOCIATED PRODUCTS

## MASONRY INSTALLATION SYSTEM



### TIER® MASONRY INSTALLATION SYSTEM

TIER® Masonry Installation System is a patented, versatile polymer fortified mortar specifically formulated for the installation of TIER® Panel, Veneer Systems and manufactured stone masonry veneers. A high performance mix provides maximum non-sag performance for vertical installations and also obtains maximum bond strength to the substrate and selected veneers. Reinforced with Kevlar® for added strength, TIER® Masonry Installation System offers exceptional workability and is backed by a 25 Year System Warranty.



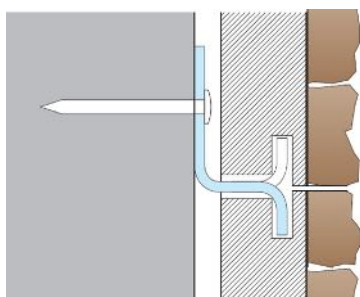
### XCEL™ MGA

TIER® Contemporary and XCEL™ MGA is an innovative installation method for walling projects. This new system was developed by combining TIER® Contemporary Range and Xcel's MGA high tensile strength adhesive. XCEL™ MGA Adhesive is a fast clean simple method of bonding TIER® Contemporary Panels to any approved substrate, and offers both technical and productivity advantages.



### TIER® BUILDING BOARD

TIER® Building Board is a medium Density Magnesium Silicate Panel which has been developed to provide the System Build and Off-Site Construction Markets with a new fire rated external wall panel system. TIER® Building Board is tested to BS EN 594 (Racking), is A1 Non-Combustible, has a low Environmental Impact and provides a stable substrate for the TIER® Panel Systems.



### MECHANICAL FIXING

We recommend that TIER® Stainless Steel fixing clips are used, in conjunction with TIER® adhesive, to areas of panel fitted above 3 metres from ground level.



### TIER STAINLESS STEEL FIXING KIT

50<sup>NO</sup> Stainless Steel Fixings per box  
50<sup>NO</sup> 6mmx60mm Hammer in Fixings per box or  
50<sup>NO</sup> Stainless Steel Screws for use with Timber Frame Structures

# INSTALLATION

## STEP BY STEP GUIDE

### 1 PREPARATION

Ensure all surfaces are structurally sound, between 40° F (4°C) and 90°F (32°C), and free from all dirt, oil, grease, paint and concrete sealers or curing compounds.

**NOTE**

Only install TIER® products on the following suitable substrates:

- Traditional unfinished Block Work
- Concrete (Scratch surface if very smooth)
- TIER® Building Board

Find the level of the first row of panels by dividing the height of the surface by 215 mm (the height of each TIER® panel). Until the adhesive has fully set the first row of TIER® panel will require temporary support. A straight edge (normally a timber lath) should be fixing to the substrate to provide support and a level starting guide.

### 2 MIXING THE ADHESIVE

When ready, mix a manageable amount of TIER® Adhesive (Masonry Installation System MIS) by slowly adding TIER® adhesive to clean water at a ratio of 3kgs to 1 Litre of water(5 Litres of water to a 15kg Bag of TIER® adhesive). Mix with a slow speed mixer for one minute, or until a creamy, smooth consistency has been reached. Allow to slake for 5 minutes, remix and use. Only TIER® Adhesive (Masonry Installation System MIS) is recommended for use with TIER® Panel Systems.

**NOTE**

Only apply TIER® mortar adhesive to an area which can be covered with TIER® panel before the adhesives surface has begun to harden or skin-over. Environmental conditions vary, but this time period is normally between 15-20 minutes from application. Conduct a small test area for non-sag performance if necessary.

Cement based products will take longer to harden and set at lower temperatures and should not be used below 5°C.

**ADHESIVE APPLICATION**

Start at the corners. Spread the TIER® adhesive onto the substrate using the flat side of a notched trowel. Ensure 100% coverage. Comb on additional adhesive with the notched side of the trowel. Use a 1/4 X 3/8 (6 mm x 9 mm) or 1/2 x 1/2 (12 mm x 12 mm) notch or loop notch trowel. Apply TIER® adhesive to the back of the TIER® panels using the same process. It is essential that TIER® adhesive is applied to both the substrate and the back of the TIER® panels, and that 100% coverage is achieved.

### 3 INSTALLATION

Start at the corners and work inwards until panels meet. Place the adhesive covered TIER panel in the desired position and press against the adhesive covered substrate. The gentle use of a rubber mallet may be helpful. Slide the panel approx. 1" (25 mm) in a diagonal direction and then back to the desired final position while maintaining even pressure. No air gaps between the TIER® panel and substrate should remain. Check for complete coverage by periodically removing a panel and inspecting the transfer of adhesive. Panels



should be fitted tightly together. Small pieces of cement or adhesive can create gaps between panels, so ensure all panels are level and joints are thoroughly cleaned before fitting the next panel.  
No grouting or jointing is required after fitting.

## 4 CUTTING

If cutting is required, we recommend the use a table saw (preferable) or a suitable 9" grinder with the appropriate diamond blade. If a grinder is used, slight blade movement can create high torsion forces which may occasionally dislodge a stone from the cement backing. This is quite normal and the dislodged stone can simply be stuck back on using TIER® adhesive or, Xcel (UBS) Universal Bond and Seal Polymer Adhesive.

We recommend that TIER® Stainless Steel fixing clips are used, in conjunction with TIER® adhesive, to areas of panel fitted above 3 metres from ground level.

## 5 CARE AND MAINTENANCE

A range of TIER® Care & Maintenance products are available. Stone products which have been sealed may be easier to keep clean and maintain than unsealed stone.

## 6 CLEANING

Ensure the finished area is completely clean and free from dust and adhesive stains before sealing, use the TIER® Cleaner by diluting one part TIER Cleaner in 3 parts warm water. Apply liberally, spreading over surface of panels. If necessary agitate with a scrubbing brush. Leave to react for 5-10 minutes, keeping wet with additional solution. Agitate surface again, mop up and rinse thoroughly with clean water. In extremely severe cases use undiluted and agitate with scrubbing brush or mechanical scrubber if necessary. Neutralise treated surface with clean water after use.

## 7 SEALING

Ensure surface to be treated is completely clean, dry and free from dirt, grime, and adhesive.

Shake bottle before use. Apply generously and evenly using a paint brush or sponge. On highly absorbent surfaces apply several coats wet-in-wet. After 15 minutes, remove any excess sealer with an absorbent cloth. Do not allow residues to dry on the surface.

## ALTERNATIVE INSTALLATION METHOD

Alternative Installation Method for TIER® Contemporary Panel System Ensure all surfaces are structurally sound, between 40° F (4°C) and 90°F (32°C), and free from all dirt, oil, grease, paint and concrete sealers or curing compounds.

Apply 5 equally spaced vertical bead lines of Xcel UBS to the back of the stone panels. These should run 150mm from the top to the bottom of the panel. Install panels from bottom to top to avoid any slipping whilst the Xcel UBS adhesive is curing, ensure that panels are fitted with no joints.

Push the panel firmly into place, interlocking it with any existing panels. The gentle use of a rubber mallet may be helpful.

WHERE TO FIND US



For more information about Tier products and your nearest distributor please visit:  
W: [www.tiernaturalstone.co.uk](http://www.tiernaturalstone.co.uk) | T: 0845 5442325 | E: [sales@tiernaturalstone.co.uk](mailto:sales@tiernaturalstone.co.uk)