

## Design S6944 / Vest and Hat with Wave



**Size:** to fit bust 76/82 cm [30/32"], 92/97 cm [36/38"] and 107/112 cm [42/44"]. Directions for the smaller size are before the parentheses, with larger sizes inside. If there is only one figure, it applies to all sizes. All measurements are in centimeters (cm). For approximate inch sizes simply multiply by 0.4 (or divide by 2.54).

**Materials:** Schachenmayr original Sun City, 550 (600/650)g #00271 olive. 4-4.5mm [US 6-7] needles, one 4mm [US G/6] crochet hook, or size to obtain gauge, and 7 buttons.

**Garter stitch:** knit all rows.

**Stockinette stitch (st-st):** K RS rows; P WS rows.

**Wave pattern:** see chart. Only RS rows are given; on WS rows purl all sts and yarn-overs. Rep rows 1-4 throughout. Note: when decreasing, ensure that the number of sts decreased corresponds with the number of yarn-overs. Where this is not possible, work K1 instead.

**Gauge:** 18 sts and 32 rows garter stitch; about 19 sts and 21 rows wave patt, each to 10cm [4"].

### METHOD

**Back:** cast on 74(92/110) sts and work 50cm

garter stitch, inc 4(5/6) sts (= make 1 knitwise tbl) evenly across last WS row = 78(97/116) sts. Cont in wave patt = selvage st, motif of 19 sts 4(5/6) times, selvage st. When work measures 55cm, after 10 rows wave patt, or after a 2nd patt row, bind off for armholes at each end 3 sts once; cont with selvage st, 6 sts st-st, 58(77/96) sts wave patt as given (after the 6 sts st-st start and end with 11th st), 6 sts st-st, selvage st. The bind off at each end of every 2nd row another 2 sts once and 1 st twice = 64(83/102) sts. When work measures 74(76/78)cm bind off all sts.

**Left front:** cast on 38(48/56) sts and work 50cm garter stitch, inc 2(2/3) sts evenly across last WS row = 40(50/59) sts. Cont in wave patt = selvage st, motif of 19 sts 2(2/3) times, selvage st (sts. 1-10 of motif, selvage st / selvage st). When work measures 55cm work armhole shaping at right edge as for back = 33 (43/52) sts. When work measures 64(66/68)cm bind off at left edge for neck 6(11/13) sts once, then on every 2nd row 3 sts twice, 2 sts once and 1 st 4 times. When work measures 74(76/78)cm bind off rem 15(20/27) sts for shoulder.

**Right front:** work in reverse, thus after selvage st start with 1st(10th/1st) st of motif and end to match. At the same time make 7 buttonholes; make 1st buttonhole about 38(40/41)cm from lower edge and rem each 4cm apart. For the first 3 buttonholes work 2 in patt, then K2 tog, 2 yarn-overs, K2 tog; on WS row knit 1st yarn-over, knit 2nd yarn-over tbl. Work the foll 4 buttonholes on a 3rd row of lace patt as given, and on WS row purl 1st yarn-over, and purl 2nd yarnover tbl.

**Sleeves (both alike):** cast on 60(66/74) sts and work in garter stitch. After 3 rows bind off for sleeve cap at each end 3 sts once, then on every 2nd row 2 sts once, 1 st 11(12/15) times, and 2 sts 5 times, then bind off rem 8(12/14) sts. Total height of work = 11(12/13.5)cm.

Finishing: block pieces to measurements, cover with a damp cloth and allow to dry.

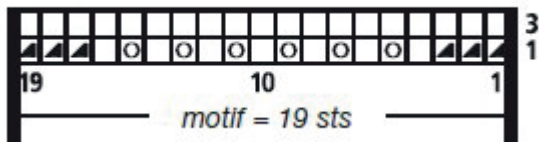
Join all seams and sew sleeves in position. Crochet 1 row crab sts (= sc [UK = dc] from left to right) around neck edge. Sew on buttons.

**Hat:** cast on 154 sts and purl 1 WS row, then cont in wave patt = selvage st, motif of 19 sts 8 times, selvage st. When work measures 16cm, on a 1st

# Design S6944 / Vest and Hat with Wave

row work decs (= K2 tog 6 times for each motif), omitting any yarn-overs = 106 sts. Rep these decs on every 4th row another 2 times = 10 sts. Knit 1 more row, then pull sts tog firmly. Pick up 154 sts along cast-on edge and work in garter stitch, at the same time K2 tog evenly across 1st WS row 72 times = 82 sts. When band measures 5cm bind off not too firmly. Close seam.

Chart for Wave Pattern



Legend

- ▴ = K2 together
- = K1
- = yarn-over

