

MOUNT SHINN

Finished Measurements: Scoodie meas approx. 63" (160 cm) in circumference x 9¾" (25 cm) wide.

If you'd like to make this Scoodie (hooded scarf), you will need the following materials:

6, 50 g (55 yd/50 m) balls **Schachenmayr Lova** (30% wool, 67% acrylic, 3% polyamide) color #00096

Fantasy Color

Size N/P/15 US [10 mm] crochet hook

Yarn needle

My Mountain logo label

Gauge: 9 sts x 5 rnds = 4" x 4" (10 x 10 cm) in Crochet patt.

Terminology

1 single crochet (sc) US = 1 double crochet (dc) UK

1 double crochet (dc) US = 1 treble crochet (tr) UK

Pattern uses US crochet terms.

These are the crochet stitches you will need to make this project:

Foundation Single Crochet Method: Chain 2. Insert hook in 2nd ch from hook, *pull up a loop [2 loops on hook]; yarn over hook and draw through first loop. Yarn over hook and draw through both loops. Insert hook under foundation chain just made and repeat from * throughout.

Crochet pattern: Work in rnds according to Chart. Chart shows Foundation Row and the 3-st patt rep. Numbers on Chart indicate rnds. Beg rnds with chain 2 (count as 1 sc) or ch 3 (count as 1 dc). Join rnds with a sl st in first ch. Rep Rnds 1-3 throughout, end after completing Rnds 4 and 5.

Let's get started!

Here are the instructions:

Using the Foundation Single Crochet Method, ch 135. Sl st to first st. Beg Crochet patt (see Chart), working Rnds 1-3 a total of 4 times, then work Rnds 4 and 5 once. Join last rnd with a sl st.



Hood

Lay piece flat and pm at top (long) edge, approx. 10¼" (26 cm) in from right (short) side. Fold piece in half, RS tog, matching short sides to each other. Using sl st, join long edges from fold to m for back seam of Hood. Cut yarn and fasten off. With yarn needle, weave in all ends on the wrong side of work. Sew on the My Mountain label.

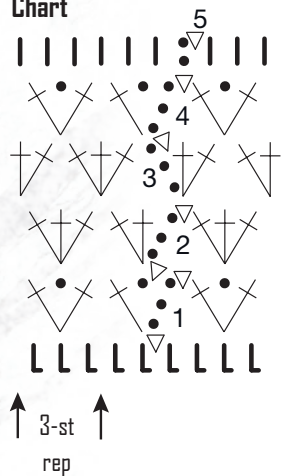
You've done it - your My Mountain Scoodie is finished!



Key

- = chain 1 (ch)
- ▽ = 1 slip stitch (sl st)
- l = 1 single crochet (sc)
- L = 1 foundation single crochet (fsc)
- † = 1 double crochet (dc)
- ✕ = [1 dc, ch 1, 1 dc] in same st
- ✕†✕ = 3 dc in same st

Chart



ABBREVIATIONS

approx	approximately
beg	begin(ning)
ch	chain
cont	continue
m	marker
meas	measures
patt	pattern
pm	place marker
rep	repeat
rnd(s)	rounds
RS	right side
sl	slip
st(s)	stitch(es)
tag	together



MOUNT SHINN

