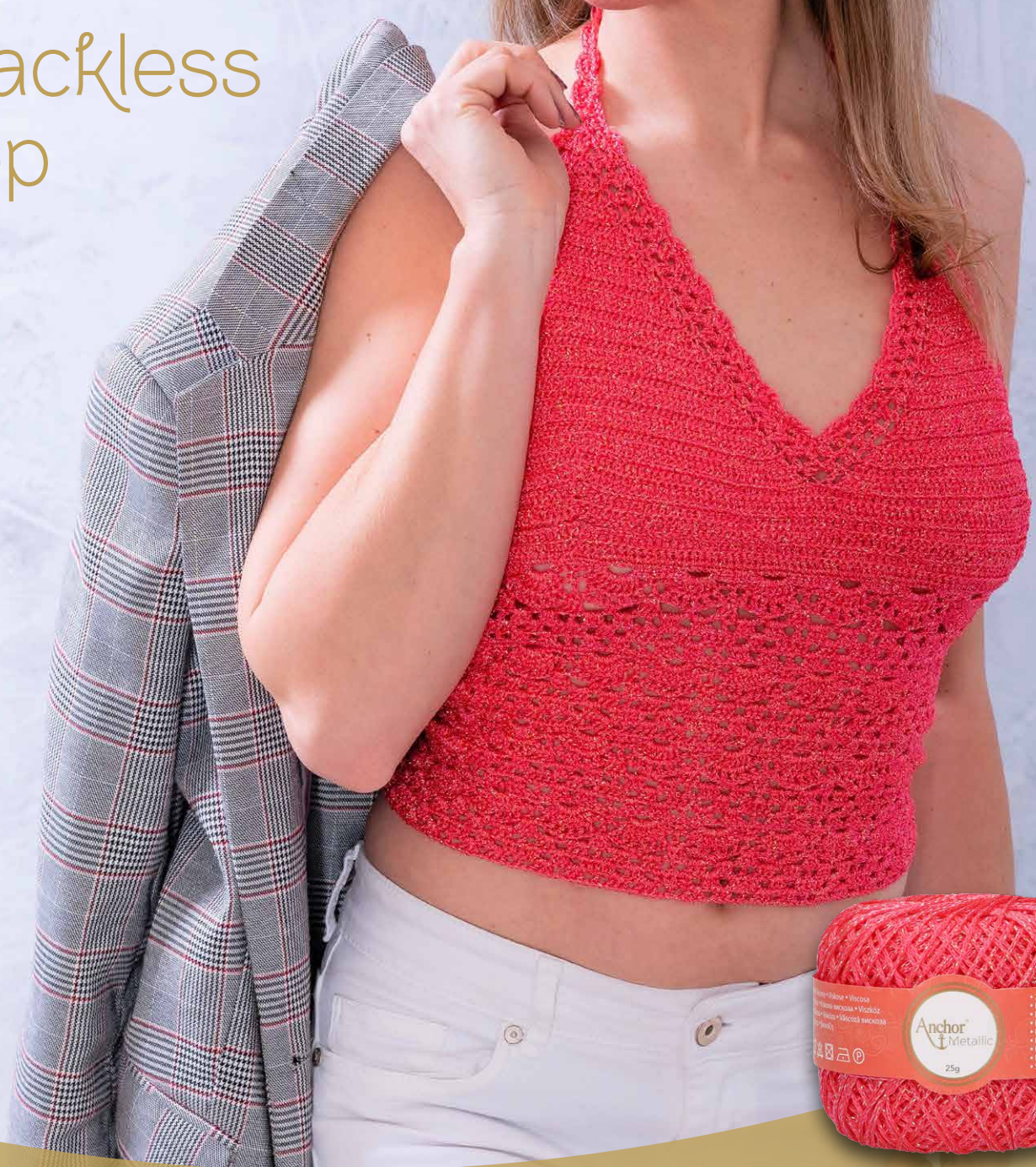


# Anchor<sup>®</sup>

## Backless Top



[AnchorCrafts.com](http://AnchorCrafts.com)

   @anchorcrafting

Designed by Anchor Studio

Design No.: 0022399-00001-14

Mez needlecraft GmbH, 2022. All Rights Reserved.



Anchor Metallic Neon - 25 g - Art. N° 4716400 - \*(colour n°)

Expert 



S, M, L



6 x \*00344



N° 1,5  
N° 2

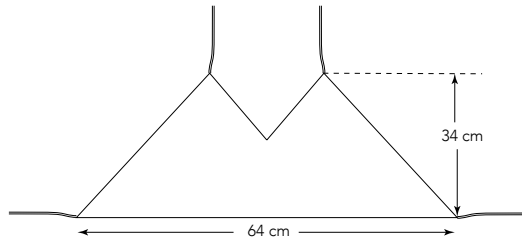
## Backless Top

With the 2 mm crochet hook cast on 165 ch. Begin working at point 1. Work the lower part of the top following **chart 1**. Finish the lower part of the top at point 2. Break the thread.

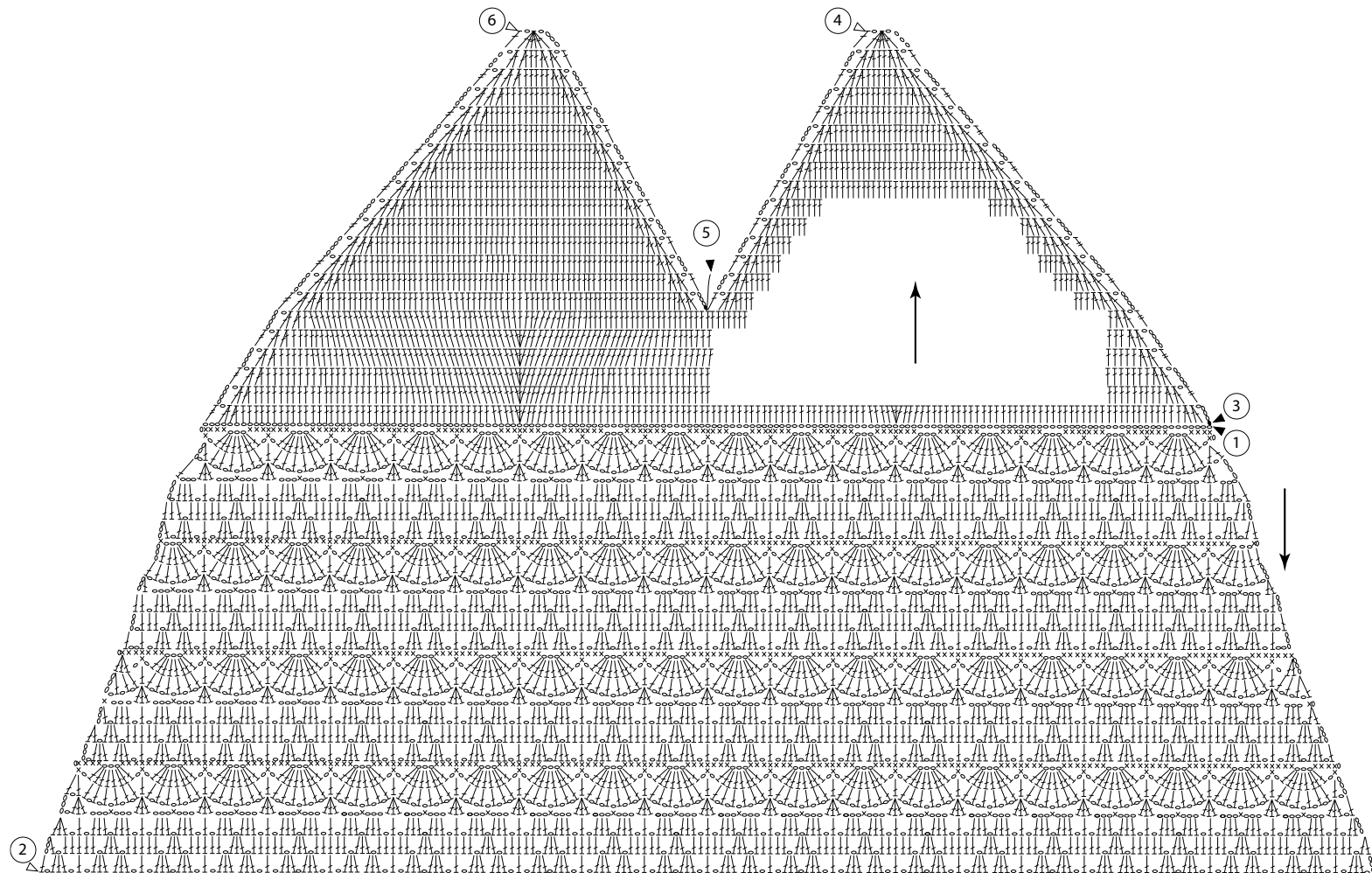
Work the top part of the top, joining the thread at point 3.

**Work in back post treble stitch** = insert the crochet hook in just one loop (instead in two) of the treble stitch in the previous (see chart), finishing at point 4. Join the thread at point 5 finishing at point 6.

### MEASURES



### CHART 1



### ASSEMBLING AND FINISHING

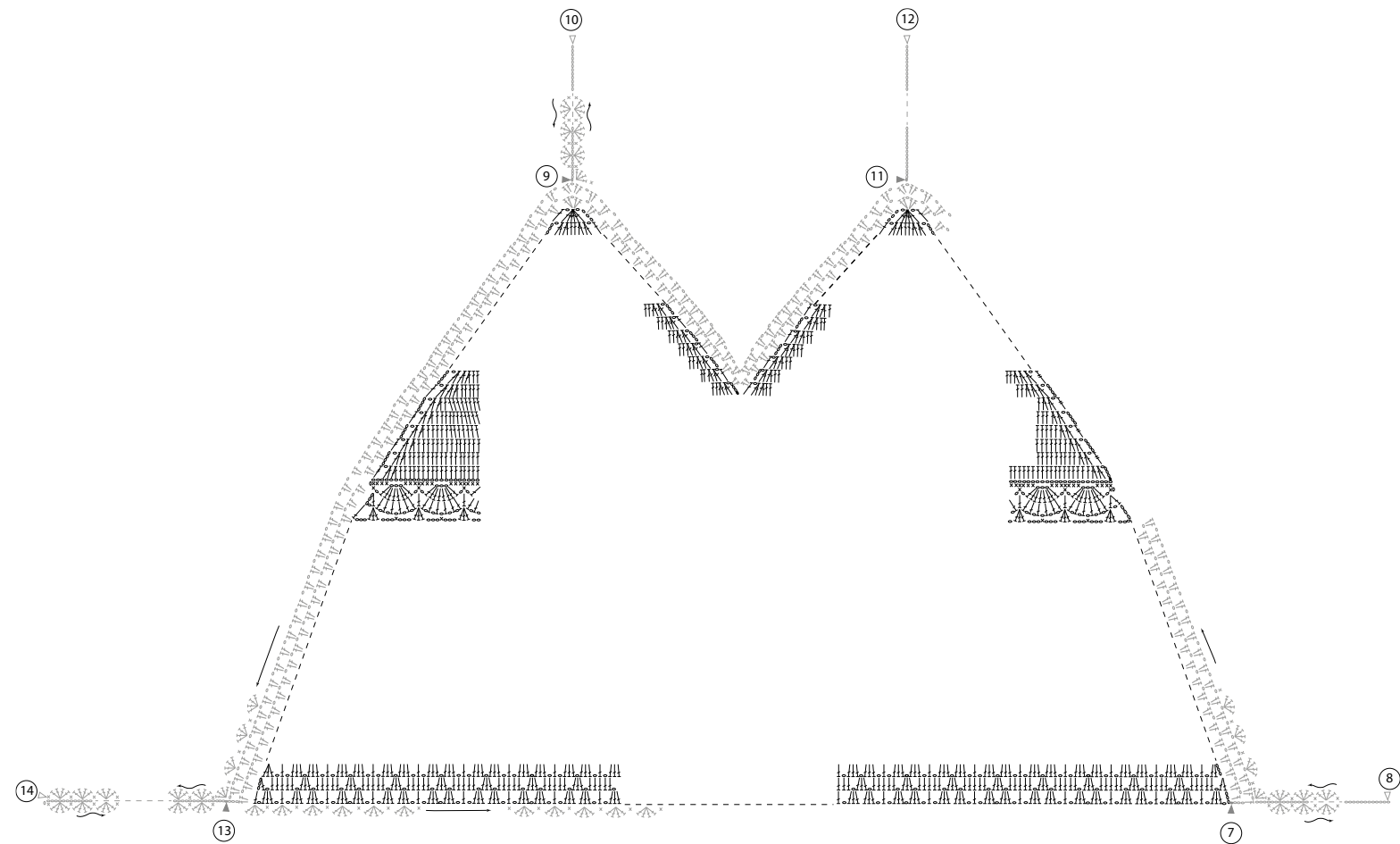
Following **chart 2**, join the thread at point 7. Work the border around the upper part, finishing at point 8, make a cord casting on a 112 sts chainette. Break the thread.

Join the thread at point 9 and make a cord casting on a 112 sts chainette. Break the thread at point 10.

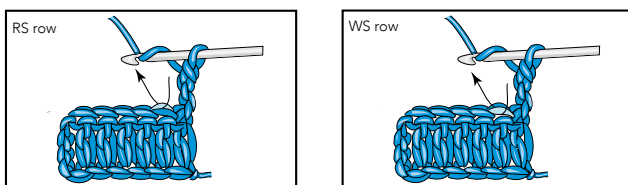
Join the thread at point 11 and make a cord casting on a 112 sts chainette. Break the thread at point 12.

Join the thread at point 13 and cast on a 112 sts chainette to make the last cord. Turn and using the 1,5 mm crochet hook crochet in shell stitch up to the finishing border. End at point 14. Break the thread.

## CHART 2



Back post treble stitch: Insert the hook as is shown by the arrow.



### KEY TO CROCHET SYMBOLS

- ▶ Begin
- ▷ End
- ch = chain(s)
- sl st = slip stitch(s)
- × dc = double crochet(s)
- ⌋ tr = treble
- ↔ work direction

### WASHING ADVICE

- Always wash in as warm a water temperature as possible - up to the temperature recommended, with a short spin. Use a lot of water if hand washing. For darker colours we recommend the use of discolouration sheets.
- Do not bleach.
- Do not tumble dry. Drip-dry on a horizontal surface.
- Iron at a low temperature using a damp cloth.
- Professional dry cleaning in tetrachloroethylene.
- Do not use optical brighteners (or any detergent containing optical brighteners).