

HOW TO CHOOSE ORGONITE, THE BEST DEVICE FOR YOU

The Ultimate Guide For
Protection & Self Improvement



www.PhotonOrgone.Co.Uk

CONTENTS

Introduction	3
Foreword.....	4
The History of Orgone Energy & Orgonite	6
How I make my Photon Orgone Orgonite	13
Metals In Orgonite, Is Aluminium Harmful?	16
Benefits of all of my Photon Orgone Devices.....	19
Questions and Answers	20
Photon Orgone Product Guide.....	32
Photon Orgone Usage and Recommendation Chart.....	37
How To Set Up An Orgone Grid Matrix.....	42
The Hazards & Harmful Effects Of EMF's.....	44

INTRODUCTION

You will also be first to be notified via my newsletter of my up to 60% off clearance sales which I have once or twice a year. I commend you for downloading this eBook and I truly hope you will be taking the time to read it all the way to the end as this ultimate guide will be hugely beneficial to your personal protection and personal enhancements.

As a special bonus for you I will give you a special discount code to use on my website PhotonOrgone.Co.Uk to obtain a discount of 35% off any order simply use the discount code 'eBook' at checkout to obtain your discount.

You will also be first to be notified via my newsletter of my up to 60% off clearance sales which I have once or twice a year.



FOREWORD

Usually some the most common questions which people ask me about Orgone devices are, “I am new to Orgonite which one shall I choose”, “Which one is best for a particular purpose”, “Which would you recommend for X,Y & Z situation” and “You have so many to choose from, which one is right for me?”.

The following short guide and charts below will hopefully answer all of your questions regarding the selection process. If you are new to Orgonite and do not have any specific issues to address and just wanted to test some for yourself I would recommend purchasing either the [HHG](#), [Starter Kit](#), [Towerbusters](#), [Meditation Pyramid](#) or a [Birthstone Device](#). These are really good devices for ‘first timers’ and all come with guides of where to place them for effective use, or you can see the chart at the bottom of the page or strategic locations to place my devices.

I personally have the above mentioned devices in my house and would always advise to aim to get one [Towerbusters](#) sitting on each electrical device in your house, and a [HHG](#) or Radiation Pyramid in a central location or ideally one at each corner of your house that way you can neutralize the negative energy the electrical devices generate and turn it into a positive Orgone energy grid. Once you have your house or office set up you will start to notice you become less irritable, happier, less headaches have also been reported and many other benefits. Even if you only have a pyramid or a handful of Towerbusters or just wear one pendant you should notice a difference unless you are right next to a phone/cell tower, then if you are that unfortunate you may need to increase your Orgonite stocks until you feel a benefit, I would also then research Lugol’s Iodine too.



All the Orgone devices that we provide serve a dual purpose the first is to reduce the harmful effects of Electromagnetic Frequencies & Radiation released by wireless and electrical equipment like TV's, wifi routers, etc. and the second purpose is the name of the device for example the [Luck, Manifestation, Law of Attraction, Cosmic Ordering and Wealth](#) will act as a radiation neutralizer and also as a Manifestation aid. Our devices work on the principle of converting negative Orgone energy into positive energies.

Besides, our devices come with additional properties too, which depend on 4 key elements: colour of device, metals within the device, crystals and the intent programmed into such devices. Each kind of device that we provide is unique, and has a special arrangement of metals & crystals, which are kept in groups together to enhance their respective properties. For instance, my Zen Master [Meditation Pyramid](#) is a fully customised device, which is unique in its own sense.

I originally wanted to design a type of device that a user could hold while meditating, and reap its benefits. Hence, I went for the colour first, ranging from Green, Brown and Purple, since these are the colours which are extensively used in the colour therapy, for total relaxation & meditation. After choosing the colours, I chose metals that could radiate the abovementioned colours, such as Copper, Silver and Aluminium. Finally, I chose crystals like Ametrine, Serpentine, Blue Lace Agate & Sunstone, which have been used for centuries by mankind, particularly Native Indians from America, and since I have received full training in their Crystal Healing Technique I know how effective these crystals are.



Red symbolizes excitement, energy, passion, love, desire, strength, power, aggression, danger, fire, anger, and violence
Orange expresses energy, balance, enthusiasm, warmth, vibrancy, expansion, shame, pride, and flamboyancy
Yellow indicates joy, happiness, betrayal, optimism, idealism, imagination, hope, dishonesty, cowardice, jealousy, covetousness, deceit, illness, hazard, grief, and friendship
Green signifies nature, environment, health, good luck, renewal, fear, generosity, fertility, jealousy, inexperience, envy, misfortune, trust, and vigor
Blue denotes calm, sophistication, hostility, peace, and feminine appeal
Indigo represents tranquility, disgust, calm, stability, harmony, unity, trust, truth, confidence, conservatism, security, cleanliness, order, loyalty, admiration, and depression
Purple implies royalty, nobility, spirituality, ceremony, mysterious, transformation, wisdom, enlightenment, cruelty, boredom, surprise, and arrogance

THE HISTORY OF ORGONE ENERGY & ORGONITE

WILHELM REICH

Wilhelm Reich was an Austria-born (24th March, 1897) psychoanalyst. He hailed from Dobryzcnica (Austria-Hungary region) which is now in Ukraine. It was the place where he spent most of his childhood with his mother Cecilie, father Leon and a younger brother Robert. His father Leon was a hard working farmer who was very strict with his two boys.

However, during 1914 to 1918 Wilhelm Reich serves WWI and is soon promoted to the rank of Lieutenant. After serving the army for 4 years as an in-charge of a big infantry, he decides to leave the army for higher education. He soon enters Vienna School of Law, but realizes that it's not for him; hence he transfers to a medical school. Though, it was hard for Reich to cope up with the tuition fee and other expenses, he manages to make it through by tutoring fellow medical students. For two years he lived on a humble diet of dry fruits & oatmeal. Apart from all the hardship and burden on his shoulders, Reich succeeds in passing his examinations in biology, physics & chemistry with honors.

Later Reich moves to Berlin and finds work with a local Doctor there. However, he soon leaves for America for better future. After moving to America, Reich actively protested and gave lectures in favor of communism. He used to speak about having better housing, nurseries, sex-counseling, sex education for bigger groups, massive factories & businesses.

In fact, he strongly believed in communism and wished to send both his daughters to communist center meant for children.

However, during 1933, the Nazis take total control and gather thousands of individuals, capturing some of the closest friends of Reich. The Nazis burned down several books in front of public which they considered inappropriate. Amongst these piles of burning books, were the books of Reich too. He became a prime target and Gestapo was willing to shoot him on sight. Luckily he manages to flee to Vienna disguising as a skier. However, during this whole confusion, Reich and Annie get divorced.

Reich publishes a new book called “The Bion” in 1938 in which he claims to find the smallest component of living matter. He had accidentally discovered this living matter while studying protozoa under a microscope.

Reich later immigrates to New York City and soon accepts a position at New School for Social Research. This is where he meets Ilse Ollendorff and soon marries her.

During the 30s & 40s, Dr. Wilhelm Reich with the help of modified Geiger counter manages to identify and measure etheric energy’s existence (chi, life energy, etc), which he named as “Orgone”. According to him both the physical & mental health totally rely on the existence as well as the flow through a body of biological energy known as Orgone. Besides, he further creates the very first Orgone accumulators which are tested on human beings. In one of his studies, he discovers that putting together alternating layers of fiberglass (organic substance) & steel wool (inorganic substance) can attract & collect Orgone/etheric energy from both life-beneficial positive form (OR or POR) & harmful negative etheric energy (DOR or Deadly Orgone). Though they can be made in several ways, in all the cases they serve same purpose. He further carries on his research by alternating organic material layers (polyester, cotton, plywood or resin) and metallic layers (steel metal or steel wool). It was found out that more the layers, more will be the energy collected. The organic material collects Orgone and metallic layer directs it towards the receiver. Through this procedure one can make blankets, boxes or pillows that he can sit on. He believed that by sitting on such accumulators one gets rejuvenated. However, as Reich wasn’t from a strong biology background, several scientists discarded his discoveries and creations.

Reich purchased a land (280 acres) in Rangeley and then started Orgonon, his new lab & research centre which focused on Orgone energy. Soon several newspapers and magazines started publishing incorrect information about Reich which completely tarnished his reputation. This set the FDA hot on the heels of the Orgonon.

Reich wanted to change the course of events which had happened and thus he created the cloud buster that is believed to relieve the energy from our atmosphere. The cloud buster resembles a sinister weapon with hydraulic tubes protruding from the rear. When the cloud buster was pointed towards the sky it behaved akin to a lightning rod dispelling the clouds.

Although the FDA continued to target Reich, he didn't stop his experiments. Soon, he designed a 'cloud buster' so that the Orgone energy in the atmosphere could be affected. He was successful in inducing the rain in the Arizona desert by forcing the clouds to emerge & disperse. His creations enabled him to take control over the forces of nature like a God.

He had the conviction that the world of science would appreciate his work and realise the changes which Orgone energy could make to humanity and mankind.

Reich was worried about nuclear energy, toxic waste, & planetary pollution much before these subjects gained popularity. He was well aware of the adverse impact on the atmospheric Orgone energy. Ironically, he believed that the FDA would not annihilate his valuable research which would be beneficial for the healing of the planet. Reich even had blind trust in the American legal system, which he believed to be fair and just. He had the faith that the American justice would not let anyone stop his significant research.

However Reich had not estimated the power the FDA held and he was blissfully unaware of the negative campaigns which they had launched against him. He faced a major setback in the month of February 1954 when the FDA issued an injunction preventing the Orgone accumulators' interstate shipment.

The FDA then moved on to the next planned step when they accused Reich of shipping fake devices & claims regarding the Orgone energy. They also ordered the agents to destroy all the accumulators in Orgonon and they also urged them to burn all Reich's books.

Reich was arrested and he spent his last living years behind bars.

In the October's end 1957, Reich's physical and mental health began to deteriorate, however he never revealed this to the officials. He confided in his friends that his jailers might put an end to his life in prison and he realized that there was no way he was going to be let out alive.

On 3rd November 1957, Wilhelm Reich breathed his last as a captive in his prison cell. Officials state that he had died due to heart failure.

REICH'S ORGONE ENERGY EXPERIMENTS

In the month of July 1940, Reich noticed the existence of Orgone energy in our atmosphere. He wanted to observe the radiation effects and so he modeled a specially designed box to hold and focus this energy. Usually boxes were made to hold lab animals. Later the sizes of the boxes were increased to accommodate a human being as well. Reich was keen to find out the effect of atmospheric Orgone on a person, especially on people suffering from incurable cancer.

The FDA (US Food & Drug Administration) started investigating scientific activities of Reich in 1940s after he started using the 'Orgone Accumulator Box' for experiments on human cancer patients. Various rumors began to do the rounds and some termed the accumulator as a 'sex box' which triggered uncontrollable erections and also heightened the sexual passion in the people. Thus, the authorities started harassing and threatening Reich. The situation became worst when negative articles began to be published which further strengthened the belief that Reich was mentally instable and his sex tinged research too was condemned.

During early 40s, Reich purchased a summer house and land in Maine. He adored the pure air and the pollution free atmosphere. He revealed in the peace which existed in that place. Reich's initial years in US were pretty uneventful and peaceful as compared to the tremulous years he spent in Europe albeit his biomedical activities caught the eye of the authorities.

In the month of December 1941, the FBI arrests Reich stating dissident activities. He was detained at the Ellis Island for 3 weeks. However they never mentioned the actual reason for arresting him. This painful experience made him a bitter man and he loathed his real and imaginary enemies. He later built a research lab on the same site and in the year 1950 he shifted to the site which he christened Orgonon. Age was taking a toll on him and at fifty three he was completely exhausted by the stress of his psychoanalytic practice.

His practice had supported his studies and his family as well. However he now wished to focus the rest of his life only to the research of Orgone.

From the results of various laboratory experiments we have realized that Wilhelm Reich started isolating and collecting Orgone out of Bion cultures. Such experiments revealed that organic and non organic materials like cotton, wool, plastic etc were used for attracting, holding and absorbing energy. Metallic materials like Aluminum, copper, brass, iron & steel can attract energy faster and this energy can be reflected in both directions. Hence, Reich started constructing small boxes using alternate layers of organic & metallic material with inner walls which were lined with metal. If you looked through a specially modeled lens which was inserted in the wall of the boxes, you could notice the Orgone radiation from the theatre in the enclosure. These "Orgone Energy Accumulators" also showed a surprising phenomenon of Orgone radiation existing in the enclosure despite the absence of BION cultures (Hydrocarbon) & inorganic materials present in alternating layers.

Reich also found out that when organic materials like cotton, plastic, wood, soil, etc were placed along with inorganic materials like metal chips etc the observations of the sky during night could be captured. This confirmed and added credibility to the fact that Orgone energy existed in the atmosphere. The finding of Atmospheric Orgone was a great landmark in Reich's research. In fact, the Orgone Accumulator's organic layers started to draw the atmospheric energy and then used the metal layers to direct it inwards. The energy was then emitted out via the metal layers and was instantly reabsorbed by the organic material that attracts back to the metal for directing it at the interior of the box. (I too have used this technique in many of my devices and produced identical effects). This led to a greater Orgone energy concentration within the box. By adding more layers, the energy's concentration could be made stronger.

Dr. Wilhelm Reich's study about the beneficial uses of Orgone Accumulator was explained in detail in a book from 30s & 40s called "The Cancer Biopathy."

ORGONE ENERGY DEVICES OF THE PRESENT TIMES

Several individuals have made an attempt to continue Reich's work by modifying it using less expensive materials. In fact, Karl Wetz had made a block out of Polyester Resin & metal shavings. He also added crystals, and this is how Orgonite was formed. The Don Croft later created a customized version of Orgonite. {Then myself at Photon Orgone} I later used three tried and tested therapies in each device named as Orgone, Crystal & Color Therapy. Through this process you boost the intensity of all the crystals which are inside the device. This process also enables you to 'program' the crystal using your mind. This is known as 'Emotional Positive Intent' which is used to focus the energy to a particular goal or task.

Do bear in mind that all the crystals have a particular property and when you group 5 to 6 crystals having identical properties you are sure to intensify the device to a greater level to achieve or combat a specific area. For instance, if you wish to battle emf, radiation, etc then you can combine black stones like Obsidian, Shungite, Black Tourmaline, Onyx, etc. The device should also be colored silver or black to draw the negative energy to the device. This will aid in harmonizing the crystals and emit positive energy.

Adding Tensor Rings to each device also aids in emitting the scalar waves from crystal during programming and helps while meditating using an Orgone device.

Most individuals have observed the positive emotional effects in front of Orgone Generators. There is an upliftment in their moods & emotions. People suffering from sleeping disorders too stated that they were able to have a better sleep and wake up in a calm state of mind after they had installed an Orgone Generator in the bedroom. Some individuals also believe that the presence of Orgone Generator aids in the growth of plants. You can find Orgone energy in Orgone devices which are created to enhance the vibration and to draw the negative Orgone energy and convert it into positive energy. Crystals having their own energy too are included in these pyramids to enhance the impact.

HOW I MAKE MY PHOTON ORGONE ORGONITE

WE FOLLOW A STRINGENT PROCESS TO ENSURE THE BEST QUALITY ORGONITE PRODUCTS ARE CREATED FOR YOU!

My devices have been designed by Colour, Crystal (*I am trained in Native American Indian Crystal Healing*) and Orgone Therapy. ***** Update I have also now started to program specific healing frequencies into each device using my new Frequency generator to give it an extra dimension ***** I concluded that doing this amplified the properties of the devices tenfold. As an example of how I decide what colour and crystals I use I will show you my Radiation Protection device's ingredients. I started with the colour so I chose black because if you look at the properties for the colour black on the list below you will see that it's a very good colour to absorb negative energy and it's a protective colour, I then chose the following crystals because they also are very good at protection and absorbing radiation Rutilated Quartz, Ruby, Black Tourmaline, Ametrine, Topaz, Mookaite, Red Pyrope Garnet, Serpentine, Turquoise, Lapis lazuli & Shungite. We combine up to 7 different Metals, Metal powder and Crystal Powder together to make the Photon Orgone Unit which is super conductive so it generates Optimal levels Of Orgone Energy.



Every Photon Orgone Unit has 23k Gold, Silver flakes, Iron Oxide, Shungite, Tensor Ring 1/8 @ 144 MHz, Colloidal silver soaked steel wool (Wilhelm Reich used wool in his accumulators) Aluminium, Iron, Brass, some items (Solder Wire) & Copper either in powdered or particle form, I have determined that this is the best possible combination of metals in order to conduct and attract the most amount of Super Strength Photon Orgone Energy. I put a combination of crystals, minerals, fossils, Monatomic Gold (orme) into the mix to enhance its properties.

Has one double terminated Magnetic Copper Wire Wrapped Lemurian Crystal, plus four other single terminated crystals pointing towards each corner? This attunes the Orgone Unit to the Frequency and Axis of the earth (all you need to do is point one corner North) thus amplifying the Photon Orgone Pyramid Tenfold. Another amplification technique we have used is a coil made with a magnetic copper wire thus harmonizing the flow of Orgone Energy in a clockwise manner.

When making Photon Orgone, we are totally pure (before every unit is made we bathe ensuring we are clean) we make our Photon Orgone only when we are in a good mood or with a clear trouble free mind, we program our

units with good vibrations and positive energy using our thoughts and a Power wand, we also have the Schumann Resonance earth frequency of 13hz playing in the background to further attune our Photon Orgone units with the earth.

Every item that goes into our Photon Orgone Units has been charged under a 1 foot pyramid or under my 6 foot pyramid which is on top of my workshop where we make our units, they are also kept in our 6 foot pyramid whilst curing surrounded by a circle of [Orgonite Radiation Shield Pyramids](#) to protect them from harmful energies and negative programming from outside influences such as the black helicopters that seem to fly over my house daily.

FANCY DECORATIVE ORGONITE..... A MUST READ!

We at Photon Orgone believe in making the highest quality Orgone products relying on the very best materials and following a precise method of production to ensure that you gain maximum benefits from the end product.

However, there are many Orgonite vendors selling these clear resin devices which just crystals inside, however they do not work.

HERE ARE SOME EXAMPLES OF PEOPLE SELLING ORNAMENTS MADE OUT OF RESIN AND COLOURED GLASS CLAIMING THEY ARE ORGONITE



METALS IN ORGONITE, IS ALUMINIUM HARMFUL?

ALUMINIUM & OTHER METALS IN ORGONITE

In principle Orgonite can be made with any metal. Apparently the main criterion for the strength of the energy conversion effect is the number of layers of alternately resin and metal. In our experience aluminium (aluminium) works best for strong Orgonite. Also aluminium forms fine crystals at the shearing surfaces when it is shaved off a solid bar or block. These micro crystals seem to contribute to the Orgone generating effect.

Iron works, but the shavings normally obtained are quite clunky and thick which results in very heavyweight creations in order to achieve the same quantitative effect as with a relatively lightweight Orgonite tool.

For personal healing tools other metals may be added for their specific finer resonances, such as gold, copper, brass, silver, titanium etc. As with gemstones and crystals, the finer energetic properties of any material will be enhanced by adding them to Orgonite. We are aware that from certain corners a negative sentiment against the use of aluminium in Orgonite is being spread. We have found no evidence for any negative effects from aluminium. All the often dramatically positive results documented on this site have been achieved with standard aluminium Orgonite. That is: polyester resin, aluminium and quartz crystals with sometimes other gemstones added.

Some people on the web have been stating that aluminium, and sometimes copper too, cannot be used in Orgonite because Wilhelm Reich supposedly said that these metals are harmful to the body. This is certainly not the case as I have been adding those two ingredients for over 15 years and I am of perfect health, in fact I have had only 4 colds in this time.

First, Reich worked with different devices, not Orgonite. Reich made Orgone accumulators from different materials, to capture the Orgone and concentrate it inside a box, in which his test subjects would absorb the high concentration of Orgone for spiritual healing purposes. Wilhelm Reich's Orgone energy accumulators were in the form of rectangular boxes which consisted of alternate layers of organic and metallic materials, such as cotton or cellulose and aluminium or iron.

Wilhelm Reich's devices were a lot more intense than a Towerbuster, HHG or a Pyramid that are made today as mentioned below his patients had to sit in his closed Orgone Accumulator box so the Orgone energy would be so intense and would be directed at the patient from all angles, this is why he stated that Aluminium was too potent a metal to be used in HIS devices, but it's absolutely perfect and the metal of choice for best results in today's Orgonite.

Reich's continuing experiments in this field disclosed that organic materials attract and collect Orgone energy from the atmosphere. The metallic material acts to both repel and contain the Orgone, and thus the combination of both materials produces an ideal collector or accumulator of Orgone energy.

Accumulator experiments with humans showed that the pain of burns was eliminated or radically diminished in a few minutes, and the healing took place quickly, without scar; skin conditions would either clear up or be made worse, depending on the type; cancer cases did not develop anaemia, and the patient's blood improved. In all cases, the results seemed to be due to a building up of energy in the organism. Where the energy was already high, patients could not tolerate the accumulator; depressed patients were helped in rebuilding their energy.

Experimenting with different metals, he found that an ORAC lined with aluminium caused a loss of fur when used on mice, while a lining of iron gave the best results. This does not mean that aluminium was bad or harmful.

Aluminium is a much lighter element than iron, and copper, and has a much stronger radiance of life energy. This is well known by people who work energetically with metals. The lighter the metal, the stronger the radiance. When you work with lighter metals, like aluminium, one has to shorten one's exposure. Too much Orgone does the damage, not the choice of metal. Having said that to obtain over exposure from Orgonite you would need to have around 5000 Orgone pyramids under your bed at night.

BENEFITS OF ALL OF MY PHOTON ORGONE DEVICES

1. Block negative mind control transmissions
2. Cleanse area of negative occult energies
3. Place near cell towers or power lines to neutralise
4. Create an optimal atmosphere
5. Cleanse the energy of a large area
6. Attract positive energy to a property
7. Prevent Chemtrails from polluting
8. Help crops grow
9. Remove poisons, germs, and biological influences
10. Block harmful radiation
11. Create peaceful energy
12. Reduces Radiation caused by wireless technology
13. Reduces The Affects Electro Magnetic Fields
14. Electricity leakages from TV's, Microwaves etc.

QUESTIONS AND ANSWERS

HOW DOES ORGONITE WORK AGAINST EMFS?

Orgonite does its work on the etheric level rather than the electromagnetic level. Rather than reducing radiation, it is proposed that Orgonite works because chaotic, imbalanced Orgone energy is a by-product of EMFs. Orgonite does not clean up EMFs per se, rather it cleans up the disorganised, deadly Orgone energy produced by it. People who are sensitive to EMFs have been helped greatly by Orgonite. For example, disturbed sleep and insomnia are one of the most common symptoms of low-level sensitivity to EMFs. One of the most widely reported beneficial effects of Orgonite is that it helps people sleep better, especially those who have problems with insomnia (although if you've been introduced to Orgonite for the first time, the influx of positive Orgone may energise you and make it more difficult to sleep to begin with! In that case, let your body get used to it slowly – don't wear pendants while sleeping, or keep Orgonite in the bedroom until you've become used to the energy. In the long run, you will sleep sounder).

HOW CAN I MEASURE ORGONE ENERGY

During the 40s, a scientist called Wilhelm Reich created an Orgone (life-energy) field meter by using high voltage induction coils in order to excite the bigger detector plate. He succeeded in showing the presence as well as

the amount of life-energy charge in human beings, plants and several other things. In fact, Experimental Life- Energy Field Meter involves use of similar law, but with latest solid-state circuitry with quite lower voltages that eradicate the requirement for heavy induction coils like the ones used in the original device of Reich. There are four ways you can test the Orgonite yourself to see if it is working correctly they are:

1. Via our Life force Energy Meter - This meter can detect life force energy from any item living or non-living item that radiates Orgone energy.



2. Dowsing - We dows over a piece of Orgonite to measure the spin, you need to be an expert dowser and holding a power wand in order to get accurate results to 98%. The dosing pendulum or bobber should swing clockwise, the bigger the swing the better the energy.



3. Using a parts per million TDS water meter (this tests Orgone energy in water charged by our Orgone board)
4. Feel good factor - many people who come to our house feel instantly relaxed sometimes sleepy, this is a great way to judge if your Orgonites is working.

5. Negative Ion Tester – Many people have reported that their devices can pick up massive amounts of Negative Ions, this is not the case Orgonite does create negative ions but it cannot be measured by the cheap £30 Chinese devices that are in the YouTube videos, so the only conclusion I have of these videos is that they kept shooting until the reading came up positive or they put something on their finger. I have used 5 different £30-50 models with no consistent results. They are so inaccurate that a Wi-Fi router gave off negative ions..... Which of course is impossible. So if you want to test for energy please use one of the above 4 points or purchase a top of the range Negative Ion counter/meter.



Q: How Do I Maintain an Orgonite Device?

A: Orgonite can reach its capacity or become sodden, and if it is in a very energy-contaminated areas, such as strong EMF zones, a space where WIFI Router or TV or many other electrical and electronic equipment, etc., the capacity may be exhausted. Photon Orgone therefore recommend that, as with healing stones, put Orgonite at least 45 seconds (the longer, the better) under running water to clear and rid of negative energy. This procedure you can do for yourself, such as when showering. The colder the water, the larger the magnetism = able to better tie in other energy - in this case, remove negative energy from the Orgonite. Once this have been completed I would recommend placing them on an Amethyst Geode for 12 – 18 hours.

When the weather is sunny, expose the Orgonite in the sun, where it will charge. It may not be in direct sunlight, with prolonged exposure to direct sunlight may fade transparent Orgonite healing stones such as amethyst, rose quartz and Citrine. It will not affect a quality of function of Orgonite. Just as the sun works for charging works same with full or new moon and stars on a clear night. The best place to charge Orgonite is to take somewhere where there are lots of positive energy, such as in nature, running streams or waterfalls.

Another way to clean Orgonite is mental purification. Proceed as follows: take Orgonite in the palm of the right hand and put your other hand over the Orgonite. Humbly Ask “higher world” (God, angels, fairies ...) to purify Orgonite from all the negative black energy, which is in itself. You can use for this purpose such as the following sentence: “All the negative energy from the Orgonite enter the light!” If you have developed clairvoyant abilities, you might see how the Orgonite evaporates haze or smoke of negative energy and you will feel a tingling in your hands over Orgonite. If not, does not matter, important is your belief, intention and the intention is to purify Orgonite! The length of cleaning depends on the size and congestion of Orgonite, Orgonite negative energy typically takes few minutes to transform. A few ways to tell if the Orgonite has been cleansed can be that you feel the tingling in the hand, become happy, relaxed or the weather changes for the better. After cleaning, you can charge the Orgonite by “your” energy. Ask “higher world” that you put into Orgonite energy as you personally need. When charging Orgonite place your hand over first so that the thumb under the fingers clenched. Charging Orgonite energy will take place every few seconds when breath out. This procedure can also be used for cleaning and charging healing stones. Please remember the more love and attention you give to them, the better they will serve. Sensitive individuals may experience, mainly from a beginning, tickle energy flowing into your hand as you would smooth a silk.

Q: What is the difference between Orgonite and classical Wilhelm Reich Orgone Technology?

A: Wilhelm Reich’s Orgone accumulator and Cloudbuster were both powerful tools to collect and concentrate ambient Orgone energy. Orgone energy as we understand it is always present either in it’s positive, life enhancing state as POR or Positive Orgone energy or in its stagnant negative Form DOR or Deadly Orgone energy.

Wilhelm Reich's pioneering tools have to be handled by experienced Orgone researchers as they can also concentrate the negative form of Orgone if it is prevalent at the location where the experiment is conducted. Orgonite however will always convert negative stagnant Orgone into alive and positive POR. It is therefore "fool proof" in application and can be made and used by every person on this planet to improve the ambient energy field. The worldwide network of Orgone activists is the best proof that Orgonite provides a truly self-empowering option to all those who care about our planet.

Q: Can you say something about the ranges of different Orgonite tools?

A: The range at which a specific Orgonite tool still effects visible or notable change depends on many factors. Most importantly the degree of electromagnetic pollution.

The following distances have been established as safe bets after years of experience: Tower buster: 1 or 2 TBs covers a radius of around 2-3 metres.

HHG: 1 HHG or medium pyramid will have a radius of around 5 metres.

Cloud Buster: 1 standard CB will have an observable effect within a radius 1 mile, but you need to link it with other Towerbusters and Orgonite in that area for it to cover that bigger radius. The more the Orgonite the bigger the radius up to 5 miles.

Pendant: Within your Auric Field.

Q: What about the properties of different metals in Orgonite

A: In principle Orgonite can be made with any metal. Apparently the main criterion for the strength of the energy conversion effect is the number of layers of alternatingly resin and metal. In our experience aluminium (aluminium) works best for strong Orgonite. Also aluminium forms fine crystals at the shearing surfaces when it is shaved off a solid bar or block. These micro crystals seem to contribute to the Orgone generating effect.

Iron works, but the shavings normally obtained are quite clunky and thick which results in very heavyweight creations in order to achieve the same quantitative effect as with a relatively lightweight Orgonite tool.

For personal healing tools other metals may be added for their specific finer resonances, such as gold, copper, brass, silver, titanium etc. As with gemstones and crystals, the finer energetic properties of any material will be enhanced by adding them to Orgonite. We are aware that from certain corners a negative sentiment against the use of aluminium in Orgonite is being spread. We have found no evidence for any negative effects from aluminium. All the often dramatically positive results documented on this site have been achieved with standard aluminium Orgonite. That is: polyester resin, aluminium and quartz crystals with sometimes other gemstones added.

Q: Is Aluminium and Copper Harmful in Orgonite?

A: Some people on the web have been stating that aluminium, and sometimes copper too, cannot be used in Orgonite because Wilhelm Reich supposedly said that these metals are harmful to the body. This is certainly not the case as I have been adding those two ingredients for over 15 years and I am of perfect health, in fact I have had only 4 colds in this time.

First, Reich worked with different devices, not Orgonite. Reich made Orgone accumulators from different materials, to capture the Orgone and concentrate it inside a box, in which his test subjects would absorb the high concentration of Orgone for spiritual healing purposes. Wilhelm Reich's Orgone energy accumulators were in the form of rectangular boxes which consisted of alternate layers of organic and metallic materials, such as cotton

or cellulose and aluminium or iron. Wilhelm Reich's devices were a lot more intense than a Towerbuster, HHG or a Pyramid that are made today as mentioned below his patients had to sit in his closed Orgone Accumulator box so the Orgone energy would be so intense and would be directed at the patient from all angles, this is why he stated that Aluminium was too potent a metal to be used in HIS devices, but it's absolutely perfect and the metal of choice for best results in today's Orgonite.

Reich's continuing experiments in this field disclosed that organic materials attract and collect Orgone energy from the atmosphere. The metallic material acts to both repel and contain the Orgone, and thus the combination of both materials produces an ideal collector or accumulator of Orgone energy.

Accumulator experiments with humans showed that the pain of burns was eliminated or radically diminished in a few minutes, and the healing took place quickly, without scar; skin conditions would either clear up or be made worse, depending on the type; cancer cases did not develop anaemia, and the patient's blood improved. In all cases, the results seemed to be due to a building up of energy in the organism. Where the energy was already high, patients could not tolerate the accumulator; depressed patients were helped in rebuilding their energy.

Experimenting with different metals, he found that an ORAC lined with aluminium caused a loss of fur when used on mice, while a lining of iron gave the best results. This does not mean that aluminium was bad or harmful.

Aluminium is a much lighter element than iron, and copper, and has a much stronger radiance of life energy. This is well known by people who work energetically with metals. The lighter the metal, the stronger the radiance. When you work with lighter metals, like aluminium, one has to shorten one's exposure. Too much Orgone does the damage, not the choice of metal. Having said that to obtain over exposure from Orgonite you would need to have around 5000 Orgone pyramids under your bed at night.

Q: I want to protect and energise my home. Where should I place the Orgonite?

A: Generally Orgonite it's very fool proof and will pick up negative energies and convert them no matter where it's placed. So in a way your intuition is your best guide. But there are some general recommendations to sort out your house. (If you live in an apartment, apply accordingly) This can be done with a few simple Towerbusters, no matter the weather.

Place one tower buster in the main electrical board, another one gets taped to the main water inlet pipe where it enters your house or apartment. Place one TB in every corner of your house in each room, put a TB or other small Orgonite on each window sill, at least of your major windows in rooms where people frequently stay, put one near your TV and any other source of radiation (computer monitor, microwave if you still feel the need for such toxic equipment) Additional HHGs or pyramids only make the energy and increase the vibrations. HHGs or pyramids in flower beds or generally in the garden enhance plant growth or my specialized plant growth stimulators.

These are just general recommendations, you may exceed them or do less. Already a single TB in the house makes a big difference. After you sorted out your home, begin gifting the microwave transmitters (cell phone towers, we call them death force transmitters) in your neighbourhood. Then enlarge the gifted area as you become aware of the beneficial changes. Take some Orgonite to your place of work, the school of your children and other places you frequently visit.

Q: Does Orgonite help against negative energy lines crossing my house or plot?

A: Many experienced dowsers have found that Orgonite does transform negative energy line or “Geopathic stress lines” into conduits of positive life enhancing Orgone energy. If you can locate such a line, (ask an experienced dowser to map it for you) you dig a shallow round hole of approximately 600mm (2’) diameter and place a circle of exactly 6 TBs in that hole. That will do the trick!

Q: I have just read *The Secret & Cosmic Ordering Books*, is there anything to help me placing my order to the universe?

A: I offer a range of [Manifestation and Cosmic Ordering Devices](#) will help you do this in fact I believe this is the only way to “Cosmic Order” as These devices will continually place your order for you until you have received it! They also come with a Meditation and Manifestation Guide.

Q: Do you help me using the items I have purchased?

A: Yes, you will get a full after sales advice and guidance along with a lifetime membership to the [PhotonOrgone. Co.Uk](#) blog where you will receive full support for any question or advise about this or any of our other products we also provide you with extensive instructions of how to use all of our creations to maximize their use.

Q: What do I do if my product is not working?

A: All of our products have been extensively tested before they are sent out, my advice would be that if you feel nothing is happening contact us at sales@photonorgone.co.uk with detailed descriptions on why you think our device is not working along with how you are using it and we will get back to you with advice as it may be something simple that you need to do in order for it to manifest properly.

Q: What is cosmic ordering and Manifestation?

A: Buddha once said, “All that we are is the result of what we have thought. The mind is everything. What we think, we Become” Basically this is a universe of vibration as Einstein once said, “Nothing happens until something moves” everything vibrates at a certain measurable frequency. Manifestation or Cosmic Ordering is the same thing they are about creating your own reality with you being the creator. You were born with an innate knowledge that

you do create your own reality and intact that knowledge is so simple and basic you ask god for this you ask him for that. It’s all about realignment to the source energy, which we will show you how!

Q: How long before I notice results?

A: Everyone is different. Some people can notice a change immediately, others it takes a month or two, but for the majority of people it will happen gradually. This is not a “30 day miracle” like other similar items claim to be. Asking when the results will show up is kind of like asking your running coach when I will notice difference from my daily running. Actually, my products will begin to create a positive change soon as you use or wear it some people have reported an energy surge soon as they used or wore it, but you may not notice results for maybe a few weeks or maybe a few months. Although it is impossible to expose yourself to this positive vortex energy without changes happening.

Q: Will your products help my aura and chakra?

A: Yes all of my products help unblocking negative energy to the seven chakra and they will also strengthen your auric field, I do offer specific [Chakra Alignment](#) devices which include a conditioning guide.

Q: Do you help me using the items I have purchased?

A: Yes, we offer a lifetime aftersales advice and guidance service, we also provide you with extensive instructions of how to use all of our creations to maximize their use. Life Force (psychic power, magical energy, chi, prana, etc.) is now accessible to everybody who has the open mind to use this exciting new technology! Therefore, to gain a technological EDGE over others is easy.

Q: I have been meditating for a while but cannot get into a really deep state you sell anything that will help me reach a deeper state of meditation?

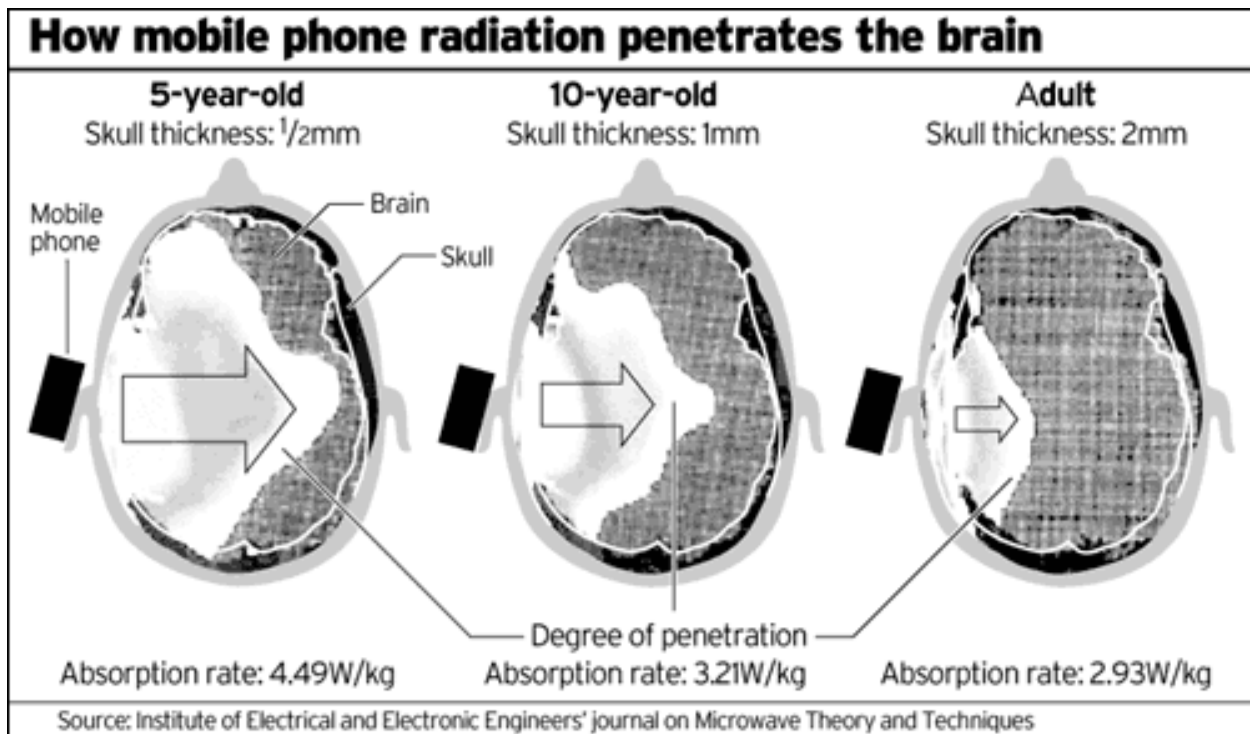
A: The [Photon Orgone Meditation Pendant or Pyramid](#) will be ideal to increase your mediational experiences simply hold it in your hand and feel yourself falling deeper and deeper into a mediational state I also recommend the [Orgone Negative Energy sacred Marking Shield](#) as this will create a sacred marking space for your meditations simply place them in the four corners of the space you wish to meditate no further than three feet apart to create a sacred square shield around you these will also be perfect for praying and manifesting.

Q: Do you sell anything that will help me increase my psychic powers?

A: Yes we do offer a few devices to help [Psychic Enhancement Pendant](#) & [Pyramid](#) will do just that by stimulation the Pineal Gland located deep inside the geometric centre of the brain, this correlates to the Great Pyramid in Egypt being in the centre of the physical planet. The Pineal Gland is about the size of a pea, and is in a tiny cave behind and above the pituitary gland which lies a little behind the root of the nose. It is located directly behind the eyes, attached to the third ventricle. Once activated one may feel pressure as you will be connecting to a higher frequency.

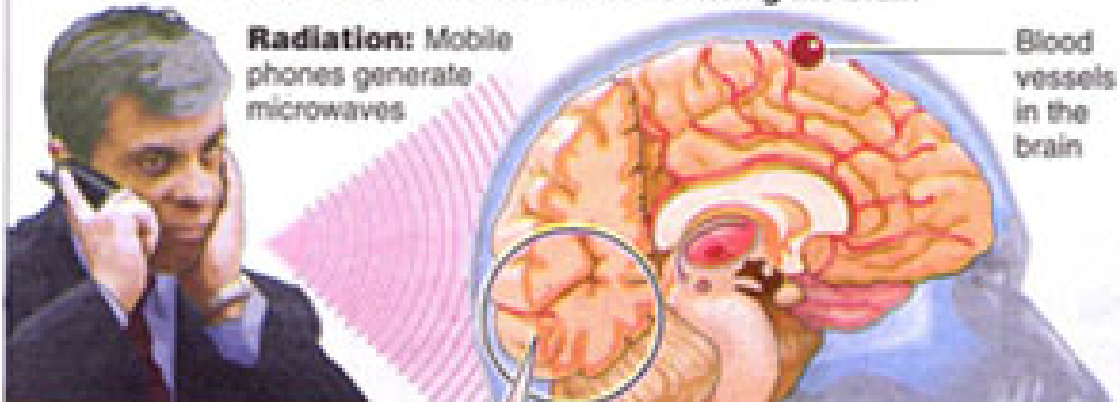
Q: I Have been noticing on the news a year or so ago about the dangers of mobile phone radiation nothing has been on the news for a while does this mean there is not a risk anymore?

A: Absolutely not! I cannot stress the importance enough of the damage mobile phones do to our auras and our brain! I conducted my own test to see if what was on the news was true. I placed an unboiled egg straight from the fridge in-between two mobile phones which I'll call mobile 1 & mobile 2. I dialled the number of mobile 1 from mobile 2 and placed them either side of the egg. After 25 mints nothing happened, after 40 mints the outer egg was getting warm, after 65 mints the egg was getting hot after 80 mints the egg was cooked!

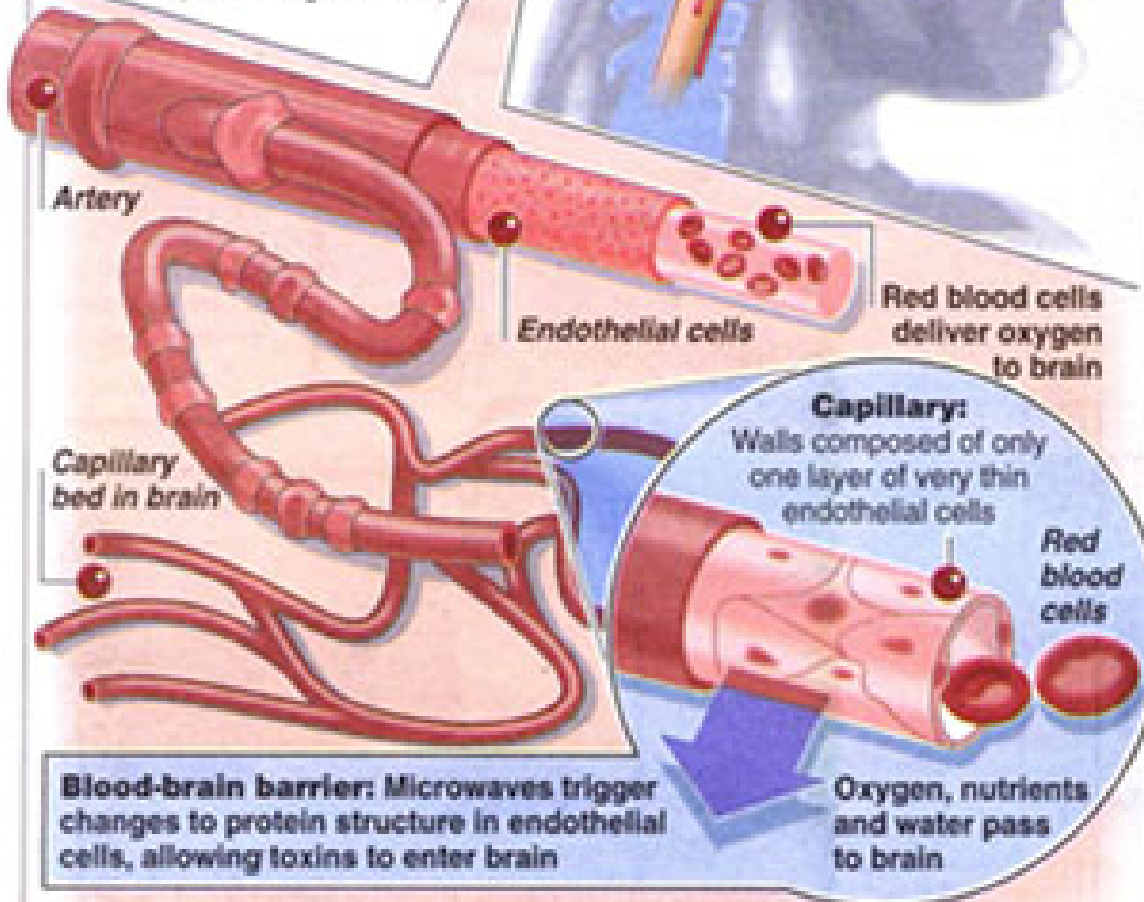


Potential new risk from mobile phones

Scientists have discovered that exposing human endothelial cells – which line the minute blood vessels in the brain – to mobile phone radiation can damage the blood-brain barrier, a vital safety barrier that stops harmful substances in the blood from entering the brain



Damage: Endothelial cells stressed after 1 hour's exposure to mobile phone radiation limit (2 watts/kg of tissue)



Blood-brain barrier: Microwaves trigger changes to protein structure in endothelial cells, allowing toxins to enter brain

Source: Finnish Radiation and Nuclear Safety Authority

© GRAPHIC NEWS

PHOTON ORGONE PRODUCT GUIDE

Towerbusters- These are placed over any electrical equipment at home, especially ones which radiate the most negative energy such as routers, TV's, microwaves, electrical boxes, Xbox, digital TV boxes, wireless handsets, cell/mobile phones and more. I would also recommend placing a few under cell/mobile phone masts in your neighbourhood. Doing this will help harmonize their negative energy.

Chembuster/ Cloud busters- These are kept at garden and provide protection in a radius of 500 meters. They are most effective with Several Tower Busters that are placed on electrical equipment to form a protection grid as they link together and give out an Orgone field of protection energy.

HHG's- These are kept at all the corners of home and over the wifi routers with five meter radius, again these will link the Tower Busters together, which you have placed on your electrical devices.

Chembuster Protection Pyramid for Any Radiation/EMF- These are most effective when kept beneath the bed (each corner or end of the bed) or on Wi-Fi routers they have two meter protection radius, again these will link the Tower Busters together, which you have placed on your electrical devices.

Chembuster Protection Pendant for Any Radiation/EMF- People can wear these pendants while away from their home for protection on the move they have a two feet radius of protection, so ideal for protection of your Auric Field.

Those who are having issues due to Negative Entities or suffer from Psychic Attack can go for below mentioned devices:

Yin Yang 2 Pyramid Set- It helps in balancing the energies of target area, simply place one at each end of the room 5 meters apart.

Psychic Attack Pyramid- It is kept at the attack prone area, and for best results it is placed in all the rooms attacks occur.

Psychic Attack Pendant- Users can wear them to keep negative entities at bay and get full protection whilst on the move.

Chakra Alignment and Clearing – Used to meditate with using my special Chakra meditation guide.

Corporeal Energy Kundalini Meditation Pendant & Pyramid - Used to meditate with using my special Chakra meditation guide as Chakras need to be fully aligned before you can unlock your Kundalini energy.

14 Gemstone Chakra Alignment, and Balancing Meditation Pyramid & Pendant - Used to meditate with using my special Chakra meditation guide.

Meditation Device – Used to meditate with my special guide included with device.

Zen Master 23K Gold Tip Giza Pyramid - Used to meditate with my special guide included with device.



EMF Pendant



Pyramid & Towerbuster - Orgone Starter Kit

Geo Orgone – These multi use devices can be used to align chakras, Meditation and Manifestation and are accompanied with 2 guides.



Radionics Activator Chi Om Mantra Meditation Device Pyramid - Used to meditate with my special guide included with device. This device can also be used in conjunction with a radionics machine.

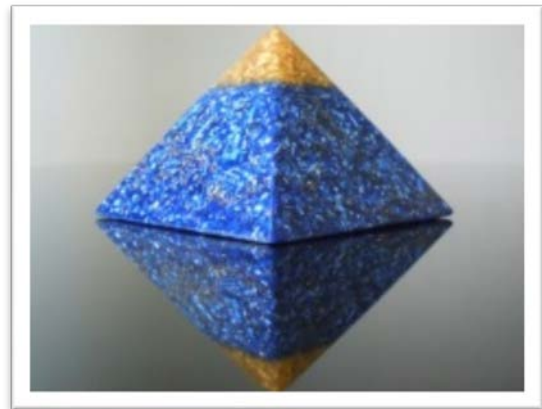
Luck, Manifestation, Law of Attraction, Cosmic Ordering and Wealth - Specially designed for offices and safe from where they will radiate frequency of prosperity, luck and wealth and have turned out to be one of our most sought after devices with numerous positive feedbacks from customers worldwide. These also have Citrine inside which are great for wealth and when not being used for manifestation you place one of the points north to bring good luck.



23k Gold Tip Manifestation Giza Pyramid, Dome and Pendant- These are proven devices for success and several clients have benefited from these in real ms of wealth, prosperity & luck.

Power Wand- It is highly potent manifestation equipment with a Manifestation guide.

Orgone Luck & Wealth Pyramid- Specially designed for offices and safe from where they will radiate frequency of prosperity, luck and wealth and have turned out to be one of our most sought after devices with numerous positive feedbacks from customers worldwide. These also have Citrine inside which are great for wealth and when not being used for manifestation you place one of the points north to bring good luck.



Water/Food/ Elixir & Boards/Crystal Charging Discs/ Coasters & Placemats -

These are used for charging and raising the vibration levels of food, Elixir, water, crystals, intensify spells, or virtually any kind of thing kept over them for 30 to 60 minutes. The charge will remain for equal amount time the equipment were placed under the device.

White Orgone Pyramid - It is used while meditation and helps in clearing the obstructions at emotional levels, allowing you to release them and advance to a higher spiritual awareness level.

Higher Self Aura Domes - Boost the vibrations of any specific area with 2 meter radius/dome. These domes allow you to connect with your invoking spirits, auras & higher self.

Healing Heart Area Clearing Meditation Hearts - These help in making improvements in life and can be kept at all the corners while meditation for enhancing the overall experience.



Negative Energy Crystal Purification Devices- They have 28 sides & edges and are moulded in a form of crystal. The great thing about these devices is that they release energy from all directions and are best for Reiki practitioners where they can place these devices around their patient for better results.



Orgone Birth & Zodiac Orgone Generators

There's a Zodiac Stone & a Birth Stone meant for each one of us. Since earlier times, healers and wise men believed that these birth stones have the property to draw powers from their respective ruling planets that affects our welfare & emotions.

Crystals have been categorized according to their specific zodiac signs and the person wearing the right kind of crystal gains a higher sense of clarity, luck & well-being along with the good properties of crystal. At Photon Orgone Organization, we put a minimum of 5 birthstones in every Pyramid, Pendant or device which help in amplifying the energy by ten times.

Our crystals enhance the output of Photon Orgone Energy, which plays a major role in synchronizing the aura with Birthstone's properties. In fact, we have observed in our study that by putting certain crystal combinations in our Orgone, the properties of crystals penetrate the body, which gives optimum results.

PHOTON ORGONE USAGE AND RECOMMENDATION CHART

I have also created this chart to help you choose which the best product is for you for a number of scenarios.

Scenario	Recommended Devices (In order of power for specific scenario)	How To Use, Where To Place & Charging
EMF/Radiation Protection	<p>HHG, Towerbusters (at least 12), Radiation Pyramid, EMF Shield Pyramid, EMF Grounding Shield Pyramid. Radiation pendant, EMF Shield pendant & Radiation Grounding pendant will be effective whilst out and about.</p> <p>See category Radiation Protection</p>	<p>Place HHG or Pyramid with one corner facing North and Ideally at each corner of house. Wear pendant as much as possible. Place Towerbusters on each electrical device in the house.</p> <p>To Charge (recommended every 12 months) or clear device run under cold water for 45 seconds holding in right hand then place on top of an Amethyst geode for 12-18 hours or leave out on full/new moon.</p>

<p>Psychic Attack/Entity Protection</p>	<p>Psychic Attack Protection Domes x 4 (placed near attack or portal), Psychic Attack Pyramid (x 3 place where attack or portal), Psychic Attack Pendant (wear at all times), Towerbusters (Also place 1 TB on each electrical device as the entities draw energy from the negative electricity). See categories Psychic Protection & Towerbusters</p>	<p>Place Pyramid with one corner facing North and Ideally at each corner of house or where attack took place or entity entry location (Portal). Wear pendant as much as possible, hold pendant or pyramid during attack. Place domes at each corner of bed and at attack location or Entity entry point. Place .Towerbusters on each electrical device as this will weaken attack or Entity.</p> <p>To Charge (recommended every 12 months) or clear device run under cold water for 45 seconds holding in right hand then place on top of an Amethyst geode for 12-18 hours or leave out on full/new moon.</p>
<p>Manifestation & Luck</p>	<p>8 Sided Wealth Manifestation Geo Orgone, Powerwand, 23ct Gold tip Cosmic ordering Pyramid or Dome, 23k Tip Green Cosmic Ordering Pyramid or Dome & Manifestation Pendant See category Manifestation</p>	<p>Place Pyramid with one corner facing North either on moneybox or under/beside bed. Use in conjunction with enclosed guide with pyramid/pendant.</p> <p>To Charge (recommended every 12 months) or clear device run under cold water for 45 seconds holding in right hand then place on top of an Amethyst geode for 12-18 hours or leave out on full/new moon.</p>

<p>Chakra Align & Clearing</p>	<p>Any in Category Chakra Alignment and Clearing Pyramids are more powerful than Pendants.</p>	<p>Place Pyramid in bedroom or area you spend most of your time and point one corner north. Use in conjunction with enclosed guide with pyramid/pendant.</p> <p>To Charge (<i>recommended every 12 months</i>) or clear device run under cold water for 45 seconds holding in right hand then place on top of an Amethyst geode for 12-18 hours or leave out on full/new moon.</p>
<p>Increase Intuition & psychic Ability</p>	<p>Orgone Psychic Ability Enhancement Clairvoyance Stimulate Pineal Gland</p> <p>Pyramid, Orgone Psychic Ability Enhancement Clairvoyance Stimulate Pineal Gland</p> <p>Pendant, Orgone Psychic Ability Enhancement Clairvoyance Pendant</p>	<p>Place Pyramid in bedroom or area you spend most of your time and point one corner north. Use in conjunction with enclosed guide with pyramid/pendant.</p> <p>To Charge (recommended every 12 months) or clear device run under cold water for 45 seconds holding in right hand then place on top of an Amethyst geode for 12-18 hours or leave out on full/new moon.</p>

<p>Charging & Clearing Water/Food/Elixir</p>	<p>Generally speaking the larger the board or disc the more powerful it will be.</p> <p>See category Coasters, Discs & Boards</p>	<p>Place any food/water item onto the charging device to keep it fresh or to raise its vibrations to 27hz which is equivalent to that of fresh fruits in 24 hours.</p> <p>I can attune the device with my frequency generator to any frequency you desire so please let me know at time of purchase.</p> <p>To Charge (recommended every 12 months) or clear device run under cold water for 45 seconds holding in right hand then place on top of an Amethyst geode for 12-18 hours or leave out on full/new moon.</p>
<p>Spiritual Awakening & Love</p>	<p>23k Gold Tip White Spiritual/ Zen Meditation Awakening Pyramid, White Spiritual Awakening Purification Giza Pyramid, 23k Gold Tip Spiritual Love Acceptance Healing</p> <p>Heart Pyramid, Spiritual Love Acceptance Healing Heart Pyramid, Orgone Spiritual Love Healing Heart Pendant.</p> <p>See category Spiritual Awakening</p>	<p>Place Pyramid in bedroom, ideally under your bed or area you spend most of your time and point one corner north. Use in conjunction with enclosed guide with pyramid/pendant.</p> <p>To Charge (recommended every 12 months) or clear device run under cold water for 45 seconds holding in right hand then place on top of an Amethyst geode for 12-18 hours or leave out on full/new moon.</p>

<p>Zen Meditation Aid</p>	<p>23k Gold Tip Cosmic Ordering Manifestation/Zen Meditation Green Dome, 23k Gold Tip Cosmic Ordering Manifestation/Zen Meditation Giza Green Pyramid, Orgone Generator Deep Zen Monk Spiritual Meditation Aid 23k Gold Master Pendant, & Orgone Corporeal Energy Kundalini Zen Master Meditation Pyramid</p>	<p>Place Pyramid in bedroom, ideally under your bed or area you spend most of your time and point one corner north. Use in conjunction with enclosed guide with pyramid/pendant.</p> <p>To Charge (recommended every 12 months) or clear device run under cold water for 45 seconds holding in right hand then place on top of an Amethyst geode for 12-18 hours or leave out on full/new moon.</p>
----------------------------------	---	---



Chakra



Coasters



Love Pyramid



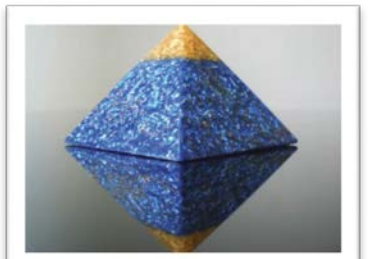
Manifestation Pendant



Manifestation Pyramid



Radiation EMF Pyramid



Radionics Pyramid



Starter Set



Towerbusters

HOW TO SET UP AN ORGONE GRID MATRIX

Please see the illustration below and the key of the best locations to place my devices.



1. Place a HHG or Radiation/EMF Pyramid at each corner of your property.
2. Tape two coasters to both sides of your water intake pipe to help neutralise the chemicals and to raise the vibrational level of the water.
3. Use 3-4 TB's, 1 x HHG or Radiation/EMF Pyramid and bury near a cell/mobile phone mast within a 3 mile radius of your house.
4. If you are situated on a Ley Line you may want to ask an experienced dowser if it's a clean or dirty one. If it's not clean then I would recommend three if my earth pipes placed in a triangle on the incoming flow of the line.
5. Bury 4 Plant growth Stimulators at each corner of your vegetable patch of favourite plants this will help them flourish.
6. The bee population worldwide is suffering from the Chemtrails and the Pesticides so please help them out by planting as many Wildflower Seeds as possible and place a Towerbuster at each corner of the Beehive. It is very important that we help the bees as they are dying out and no bees = every fruit and vegetable being genetically modified which in turn means more tumours for us so please help the bee population.

7. Throw a few Towerbusters in a stagnant pond or river this will help the wildlife and fish.
8. If you locate a negative energy vortex push an Earth Pipe into the ground and surround it with a circle of Towerbusters this will help neutralise it.
9. Place 1 Towerbuster every three metres around your property inbetween the HHG's or Pyramids you have placed at each corner as per point 1.

The next 11 points are extra places within your home you can place either Towerbusters, Radiation Domes, or Radiation/EMF Pyramids.

10. Place at each corner of your bed.
11. Put one either side of your windowsill and another in the middle.
12. Place on every electrical device.
13. Place on or under your plug socket.
14. Create a Hexagon shape around you whilst meditation.
15. Carry them with you in your bag or car.
16. Place under bed for better sleep.
17. Put on the perimeter of property to cleanse it.
18. Place in corners of a room to protect it.
19. Place near cell towers to block the negative effects.
20. Grid them on your property for protection.
21. Create an Orgone grid by placing one every 3 feet around the perimeter of your property.

THE HAZARDS & HARMFUL EFFECTS OF EMF'S

The immediate radiation of the mobiles has the potential to modify the proteins of the egg. Imagine what it can do with the proteins of your brains when you make long calls. Please try to reduce your long time calls on your mobile phone please tell all of your friends you care for about this danger or if you don't believe me set the experiment up yourself! To help combat this radiation I have created the Photon Orgone [Mobile Cell Phone Radiation Shield](#) this will dramatically reduce the effects of radiation omitted from mobile phones by up to 50% if you cannot reduce the amount of time you are using your mobile phone please buy one of these!

WHAT ARE THE HAZARDS OF ELECTROMAGNETIC FREQUENCIES?

Lately, concern about the potential harmful effects of EMFs (electromagnetic frequencies) has increased. Although many health agencies still dismiss the risks as minor, there has been a lot of research that shows differently. For example:

In 1976, a study showed that the offspring of mice that were exposed to low-frequency EMR (electromagnetic radiation) from power lines were born stunted.

Several researchers have shown connections between over-exposure to EMR and cancer. For example, in 1982, it

was noted by a researcher that there were more leukaemia-related deaths in men who worked close to electrical and magnetic fields.

A 1987 study found that rats which were exposed to EMFs for a month found it harder to learn a new task than the control group. The rats' offspring that were exposed to EMR in the womb and for nine days after birth developed permanent learning disabilities.

Researchers in India found 593 studies which showed the negative effect of mobile phone towers on animals and plants. The researchers commented that the "review of existing literature shows that the EMFs are interfering with the biological systems in more ways than one and there had already been some warning bells sounded in the case on bees and birds, which probably heralds the seriousness of this issue and indicates the vulnerability of other species as well"

DOES ORGONITE PROTECTS AGAINST EMF?

Thankfully, Orgonite is an efficient way to diminish the effects of EMF. In fact, this is one of the most well-known and popular uses of Orgonite.

Ways to use Orgonite to reduce the effects of EMFs:

- Wear an Orgonite pendant to protect you at all times. Attach a small piece of Orgonite to your mobile phone.
- Put a piece of Orgonite underneath your computer screen.
- Place Orgonite inside and outside your fridge.
- Put Orgonite near any other electrical objects – e.g. the TV and the clock radio.
- Gift mobile phone towers in your vicinity. Gifting is a huge part of Orgonite culture, and it's a fantastic way to make a difference to the world around you.

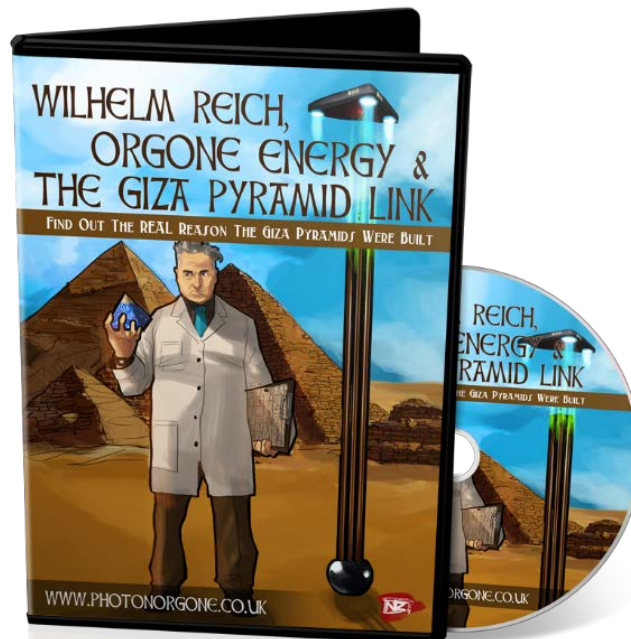
HOW DOES ORGONITE WORK AGAINST EMFS?

Orgonite does its work on the etheric level rather than the electromagnetic level. Rather than reducing radiation, it is proposed that Orgonite works because chaotic, imbalanced Orgone energy is a by-product of EMFs. Orgonite does not clean up EMFs per se, rather it cleans up the disorganised, deadly Orgone energy produced by it. People who are sensitive to EMFs have been helped greatly by Orgonite. For example, disturbed sleep and insomnia are one of the most common symptoms of low-level sensitivity to EMFs. One of the most widely reported beneficial effects of Orgonite is that it helps people sleep better, especially those who have problems with insomnia (although if you've been introduced to Orgonite for the first time, the influx of positive Orgone may energise you and make it more difficult to sleep to begin with! In that case, let your body get used to it slowly – don't wear pendants while sleeping, or keep Orgonite in the bedroom until you've become used to the energy. In the long run, you will sleep sounder).

I commend you for downloading this eBook and taking the time to read it all the way to the end. As a special bonus for you I will give you a special discount code to use on my website PhotonOrgone.Co.Uk to obtain a discount of 35% off any order simply use the discount code 'eBook' at checkout to obtain your discount.

If you need more reasons to sign up to my newsletter here are nine others!

Obtain Reward Points On Every Purchase, First To Know About Limited Stock Clearance Sales, Get FREE Research Products (I like to test products before selling so signup to become an Orgone Product Tester), FREE Chakra & Manifestation Relasync Meditation CD, Monthly Newsletters And Research Articles, Obtain my new DVD for FREE entitled 'Wilhelm Reich, Orgone Energy & The Giza Pyramid Link'



Release Date September 2015 only on PhotonOrgone.Co.Uk