



PH PH8 PH12 PHX

Post Holders and Post Collars

Optical Tables

Stages

Optical Mounts

Components

Motion Systems

Education Systems

Lasers

Optics & Crystals

Other Equipment



Overview

- Post Holder with wide square cut which provides two line contact firmly
- Brass base is capable of loading weight and stable
- Post Holder with spring loaded ball which allows one-handed positioning
- Combine with RHX-series or RH-series can rotate without changing the weight
- PH8-20C (For $\varnothing 8$ mm (0.313") holds short posts horizontally or vertically

Specification & Item Numbers

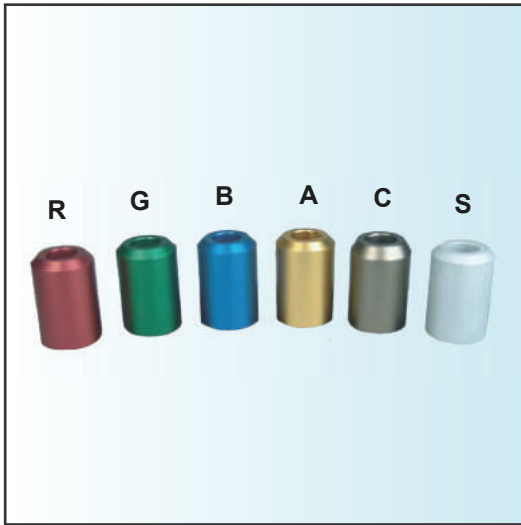
PH-series

Item#	D	A	B	C	E
PH8 Series	8.0 [.315]	19.0 [.75]	10.0 [.39]	6.0 [.24]	M4x0.7P [#8x32W]
PH12 Series	12.0 [.47]	25.0 [1.0]	16.0 [.63]	9.5 [.375]	M6x1P [1/4x20W]
PH Series	12.7 [.50]	25.0 [1.0]	16.0 [.63]	9.5 [.375]	M6x1P [1/4x20W]
PHX Series	20.0 [.785]	37.5 [1.5]	16.0 [.63]	9.5 [.375]	M6x1P [1/4x20W]

PH8-20C

For diameter $\varnothing 8$ mm (0.313") Post.					For diameter $\varnothing 20$ mm (0.785") Post			
Product Number	PH8-20C	PH8-20	PH8-40	PH8-60	PHX-2	PHX-3	PHX-4	PHX-6
Length (L) mm (Inch)	20(0.785")		40(1.57")	60(2.36")	20.5(2")	76.2(3")	101.6(4")	152.4(6")
Weight (kg)	0.02		0.04	0.06	0.13	0.19	0.25	0.36
For diameter $\varnothing 12$ mm Post							Post Collar	
Product Number	PH12-25	PH12-38	PH12-50	PH12-75	PH12-100	PH12-120	Post Diameter	Product Number
Length (L) (mm)	25	38	50	75	100	120	$\varnothing 8$ Series	PH8
Weight (kg)	0.04	0.06	0.08	0.12	0.15	0.18	$\varnothing 12$ Series	PH12
For diameter $\varnothing 12.7$ mm (0.5") Post							12.7mm (0.5")	PH
Product Number	PH-1	PH-1.5	PH-2	PH-3	PH-4	PH-6	Series	
Length (L) mm (Inch)	25.4(1")	38.1(1.5")	50.8(2")	76.2(3")	101.6(4")	152.4(6")	20mm (0.875")	PHX
Weight (kg)	0.04	0.06	0.08	0.12	0.15	0.23	Series	
Material	Aluminium (Black anodized)							

Colored Post Holder



Overview

- Features various colors to classify lab objects such as lens size, focal length and so on
- Please add the preferable color behind item No. while placing order
- Red → PH-1.5R
- Green → PH-1.5G
- Blue → PH-1.5B
- Gold → PH-1.5A
- Gray → PH-1.5C
- Silver white → PH-1.5S

Specification & Item Numbers

PH- x series

Item#	PH12 Series	PH Series
D	12.0 [.47]	12.7 [.50]
A	25.0 [1.0]	
B	16.0 [.63]	
C	9.5 [.375]	
E	M6x1P [1/4x20W]	

Item Numbers

Part No.	PH-1 x	PH-1.5 x	PH-2 x	PH-3 x	PH-4 x	PH-6 x
Inside Diameter	Ø12.7mm (0.5")					
Length (L) mm (Inch)	25.4(1")	38.1(1.5")	50.8(2")	76.2(3")	101.6(4")	152.4(6")
Weight (kg)	0.04	0.06	0.08	0.12	0.15	0.23

- Optical Tables
- Stages
- Optical Mounts
- Components
- Motion Systems
- Education Systems
- Lasers
- Optics & Crystals
- Other Equipment



RH8 RHC RHX

Post Collars

Optical Tables

Stages

Optical Mounts

Components

Motion Systems

Education Systems

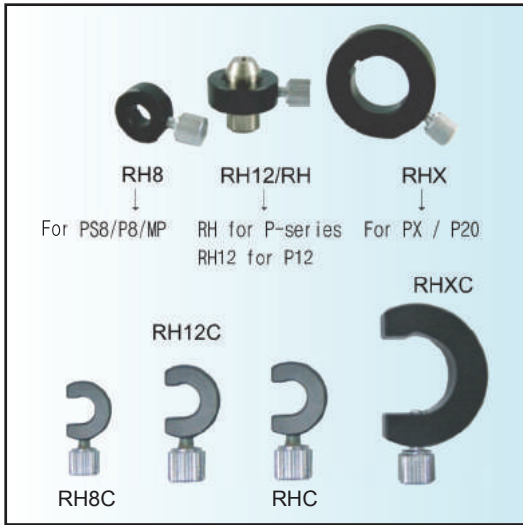
Lasers

Optics & Crystals

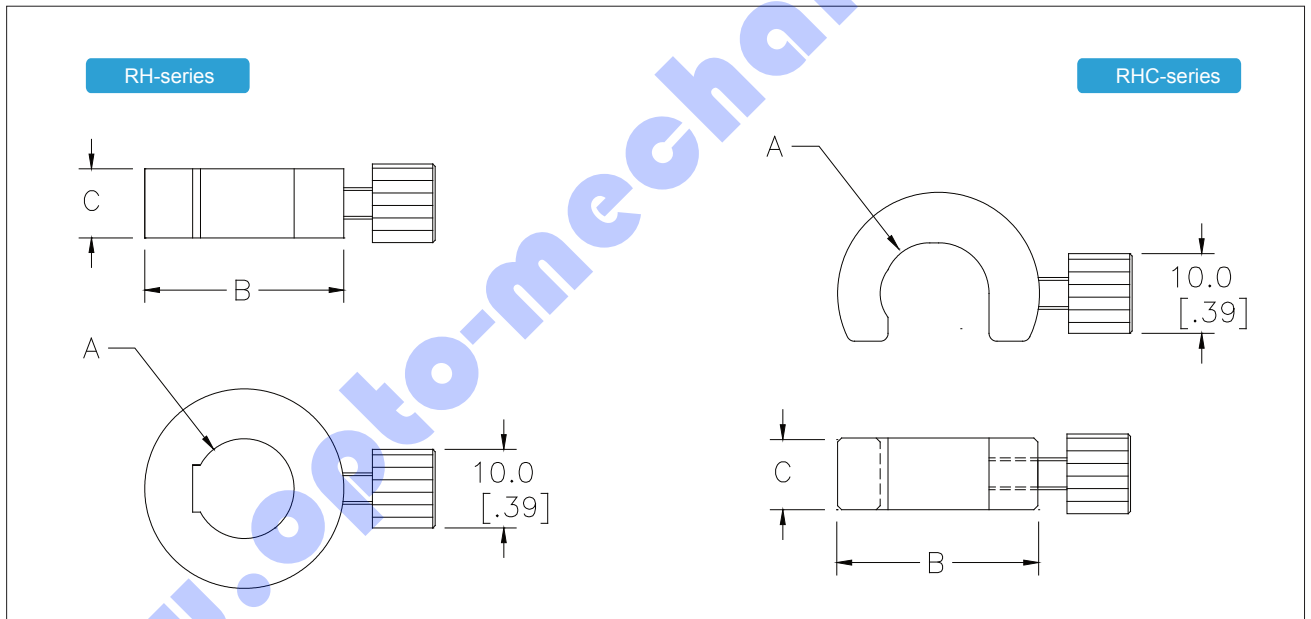
Other Equipment

Overview

- Rotation without changing the height
- Material: Aluminum
- Metric / Imperial Version
- To order Imperial model please add * I- * to Item



Specification & Item Numbers



Item Numbers

Item Number	A Ø mm (inch)	B Ø mm (inch)	C Ø mm (inch)	Weight (kg)
RH8	8.0 (0.31)	19.0 (0.75)	8.0 (0.31)	0.07
RH8C	8.0 (0.31)	19.0 (0.75)	8.0 (0.31)	0.10
RH12	12.0 (0.47)	25.4 (1.0)	9.0 (0.35)	0.17
RH12C	12.0 (0.47)	25.4 (1.0)	9.0 (0.35)	0.14
RH	12.7 (0.50)	25.4 (1.0)	9.0 (0.35)	0.17
RHC	12.7 (0.50)	25.4 (1.0)	9.0 (0.35)	0.14
RHX	20.0 (0.785)	38.0 (1.5)	9.5 (0.37)	0.28
RHXC	20.0 (0.785)	38.0 (1.5)	9.5 (0.37)	0.25

Rotational Post Holders



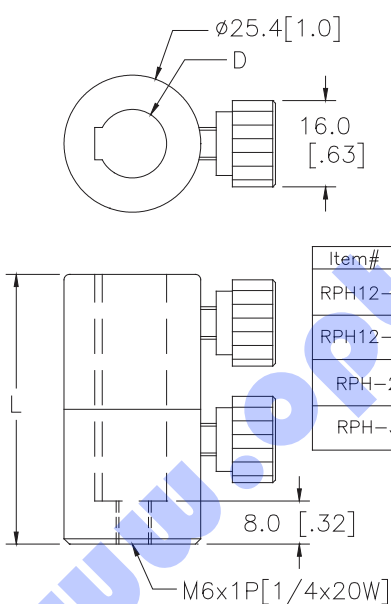
RPH12-50(RPH-2) RPH12-75(RPH-3)

Overview

- 360 smooth rotation
- Easy one-handed positioning
- Material: Aluminum
- Metric / Imperial Version
- To order Imperial model please add * I- * to Item

Specification & Item Numbers

RPH & RPH12-series



Item#	L	D
RPH12-50	50.0 [1.97]	12.0 [.47]
RPH12-75	75.0 [2.95]	12.0 [.47]
RPH-2	50.8 [2.0]	12.7 [.50]
RPH-3	76.2 [3.0]	12.7 [.50]

APPLICATION

RPH12 series + P12

RPH series + P-series

Item Numbers

Item Number	Diameter Ø mm (inch)	Length mm (inch)
RPH-2	12.7 (0.5")	50.8 (2")
RPH-3	12.7 (0.5")	76.2 (3")
RPH12-50	12.0 (0.47")	50.0 (1.97")
RPH12-75	12.0 (0.47")	75.0 (2.95")



RP
HX

Rotational Post Holders

Optical Tables

Stages

Optical Mounts

Components

Motion Systems

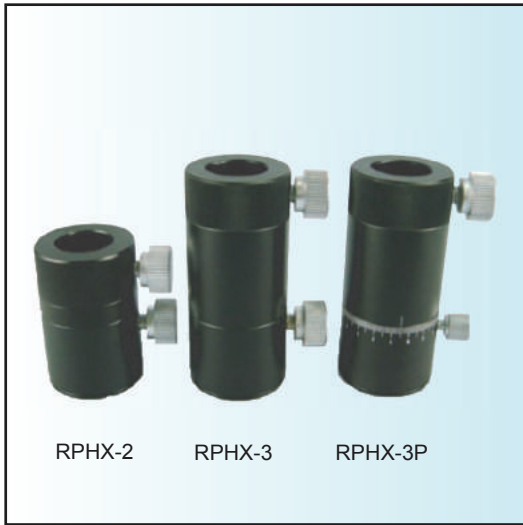
Education Systems

Lasers

Optics & Crystals

Other Equipment

Overview



- For diameter : 20 mm
- 360 smooth rotation
- Square relief cut
- To order Imperial model please add * I- * toem

RPHX-2 RPHX-3 RPHX-3P

Specification & Item Numbers

RPHX-2 / 2P / 3 / 3P

Technical drawing showing dimensions for the rotational post holder:

- Outer diameter: $\phi 36.0$ [1.42]
- Inner diameter: $\phi 20.0$ [.79]
- Threaded section length: 16.0 [.63]
- Bottom section length: 8.0 [.32]
- Thread: M6x1P [1/4x20W]

Item#	L
RPHX-2	50.8
RPHX-2P	[2.0]
RPHX-3	76.0
RPHX-3P	[3.0]

Item Numbers

Item Number	Diameter ϕ mm (inch)	Length mm (inch)
RPHX-2	20.0 (0.785")	50.8 (2")
RPHX-2P	20.0 (0.785")	76.0 (3")
RPHX-3	20.0 (0.785")	50.8(2")
RPHX-3P	20.0 (0.785")	76.0(3")

Vertical Adjustable Post Holders



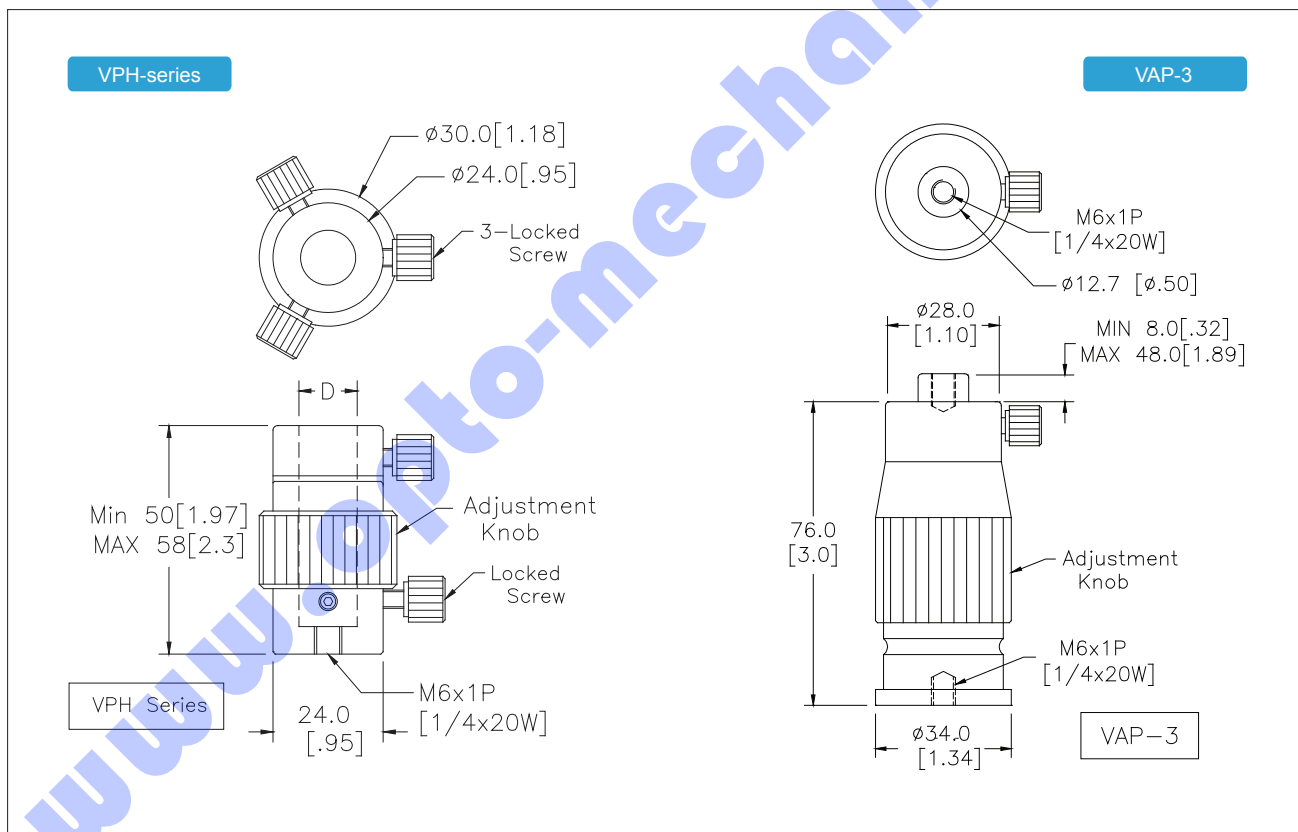
VPH12-50(VPH-2)

VAP-3

Overview

- VPH series For Diameter ; \varnothing 12 & 12.7 mm
- Fine adjustment range 8 mm (0.315")
- (1mm per)360 turn
- Material: Aluminum (Black anodized)
- Metric / Imperial Version
- To order Imperial model please add * I-* to Item

Specification & Item Numbers



Item Numbers

Item Number	Post Diameter D mm (inch)	Post Adjustment mm (inch)	Length Adjustment mm (inch)
VPH12-50	12.0 (0.47")	32 (1.26")	8 (0.315")
VPH-2	12.7 (0.5")	32 (1.26")	8 (0.315")
VAP-3	12.7 (0.5")	8~48 (0.315~1.89")	---



BC

Base Clamps

Optical Tables

Stages

Optical Mounts

Components

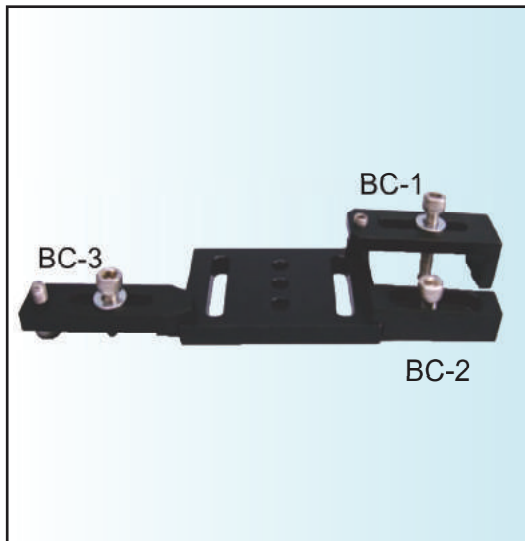
Motion Systems

Education Systems

Lasers

Optics & Crystals

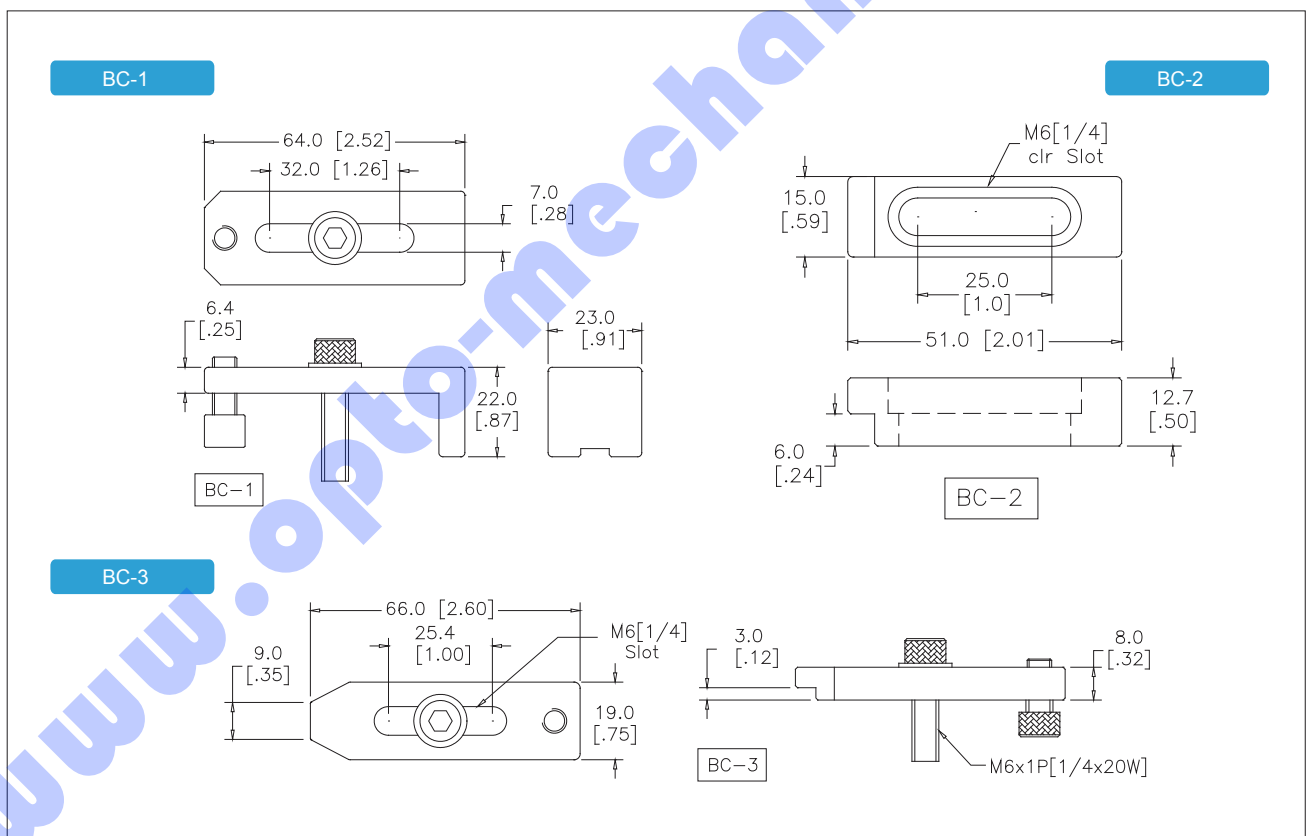
Other Equipment



Overview

- Using in combination with SB-series sliding bases
- Material: Aluminum (Black anodized)
- Metric / Imperial Version
- To order Imperial model please add * I - * to Item

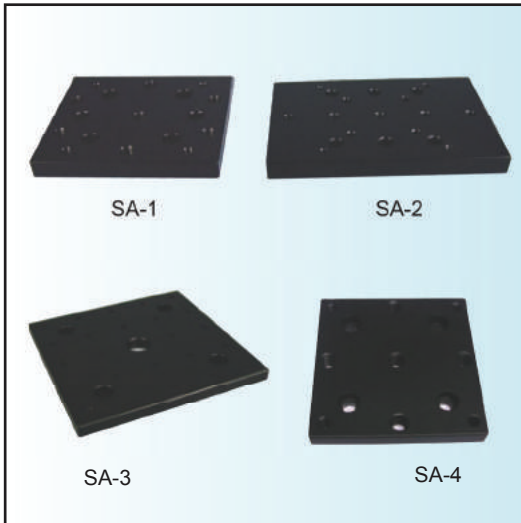
Specification & Item Numbers



Item Numbers

Item Number	Can be used thickness mm (inch)	Thickness mm (inch)	Weight (kg)
BC-1	6~16 (0.24~0.63")	22 (0.87")	0.04
BC-2	5~10 (0.2~0.4")	12.7 (0.5")	0.03
BC-3	6~16 (0.87")	22 (0.87")	0.04

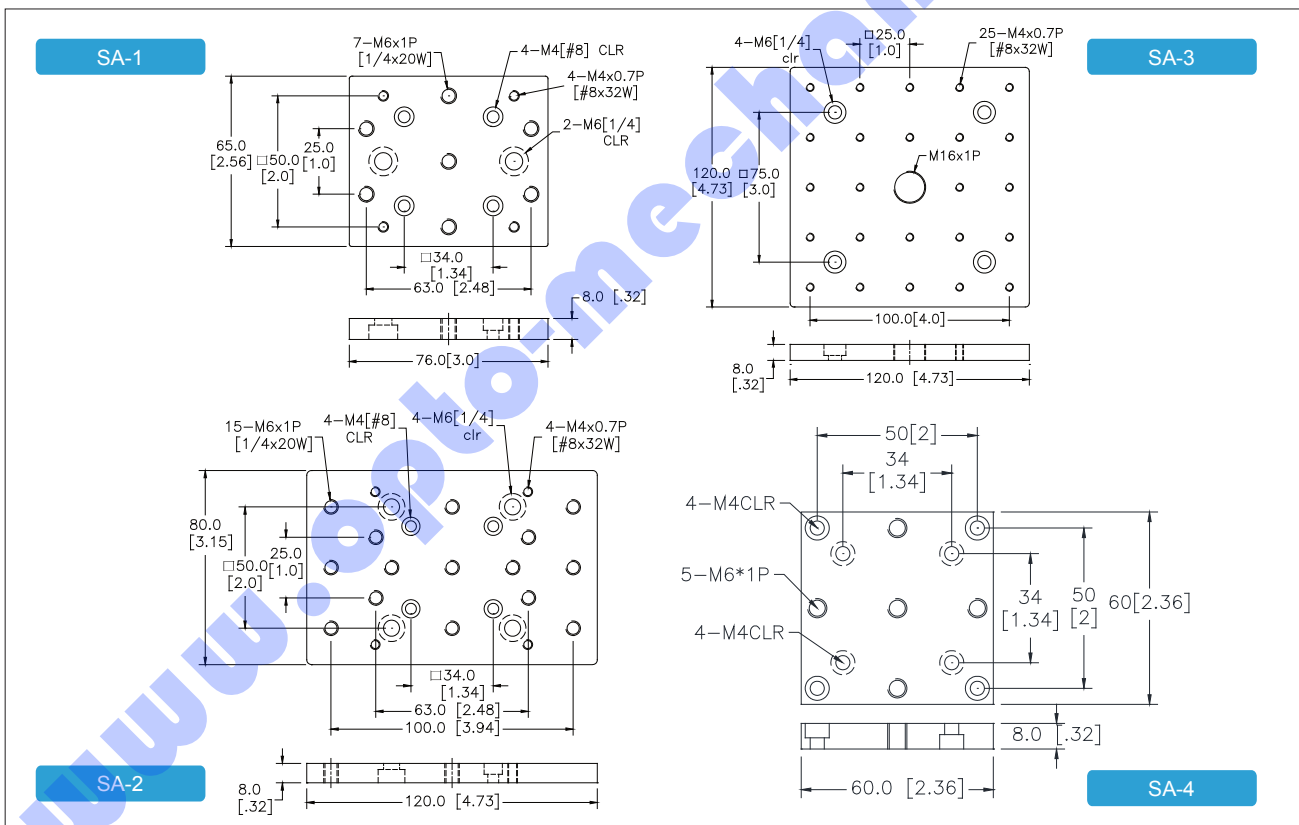
Sliding Bases



Overview

- Material: Aluminum
- Compatible with rail and table mounting systems
- Metric / Imperial version available
- To order Imperial model please add * I - * to Item

Specification & Item Numbers



Item Number	Stage Surface mm (inch)	Thickness mm (inch)	Weight (kg)
SA-1	76x65	8.0	0.17
SA-2	120x80	8.0	0.16
SA-3	120x120	8.0	0.36
SA-4	60x60	8.0	0.10



SB

Sliding Bases

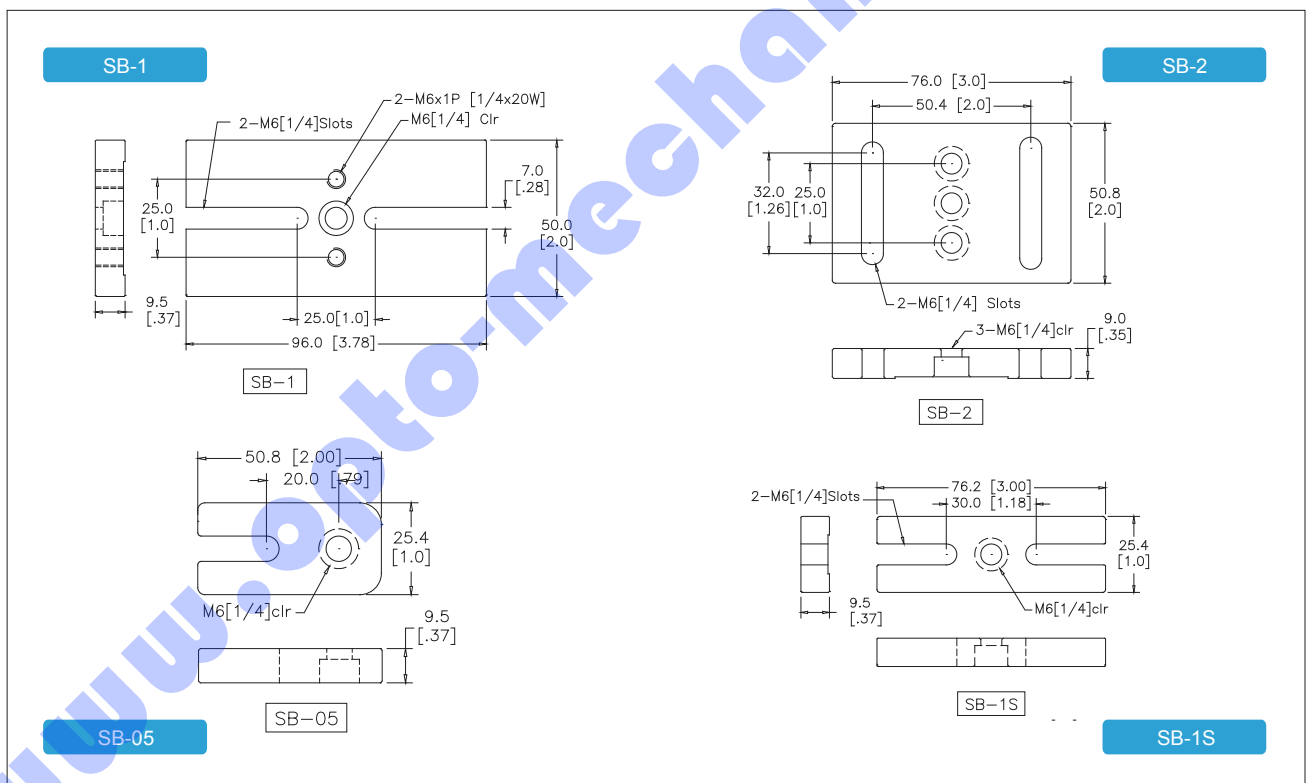
BEST



Overview

- 9 surface dimensions for selection: SB- 05 / 1S / 1 / 2 / 3 / 4 / 5 / 6 / 7
- Material: Aluminum
- Compatible with rail and table mounting systems
- Metric / Imperial Version available
- To order Imperial model please add * I- * to Item

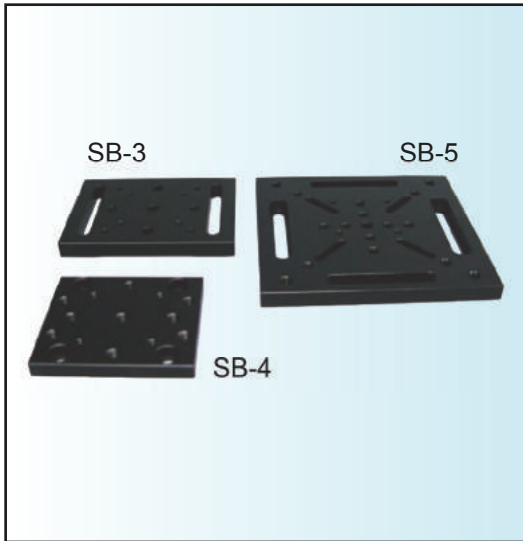
Specification & Item Numbers



Item Numbers

Item Number	Stage Surface mm (inch)	Thickness mm (inch)	Weight (kg)
SB-05	25.4x50.8 (1"x2")	9.5 (0.375")	0.02
SB-1S	25.4x76 (1"x3")	9.5 (0.375")	0.04
SB-1	50.8x96 (2"x3.78")	9.5 (0.375")	0.13
SB-2	50.8x76 (2"x3")	9.5 (0.375")	0.10

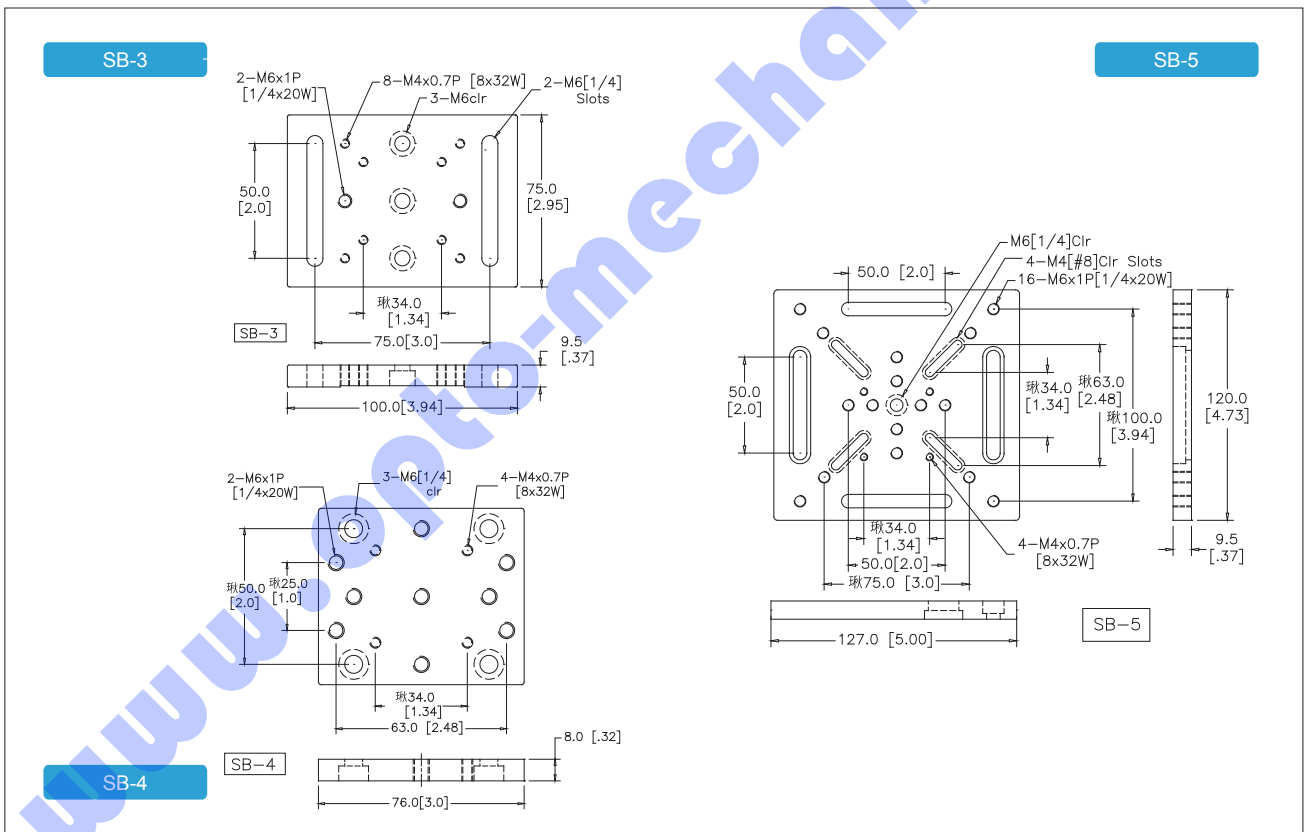
Sliding Bases



Overview

- 9 surface dimensions for selection:
- SB- 05 / 1S / 1 / 2 / 3 / 4 / 5 / 6 / 7
- Material: Aluminum
- Compatible with rail and table mounting systems
- Metric / Imperial Version available
- To order Imperial model please add * I - * to Item

Specification & Item Numbers



Item Numbers

Item Number	Stage Surface mm (inch)	Thickness mm (inch)	Weight (kg)
SB-3	76X100 (3"X3.94")	9.5 (0.37")	0.17
SB-4	65X76 (2.56X3")	8 (0.315")	0.10
SB-5	120X127 (4.73"X5")	9.5 (0.37")	0.30

- Optical Tables
- Stages
- Optical Mounts
- Components
- Motion Systems
- Education Systems
- Lasers
- Optics & Crystals
- Other Equipment



SB SBR

Sliding Bases

Optical Tables

Stages

Optical Mounts

Components

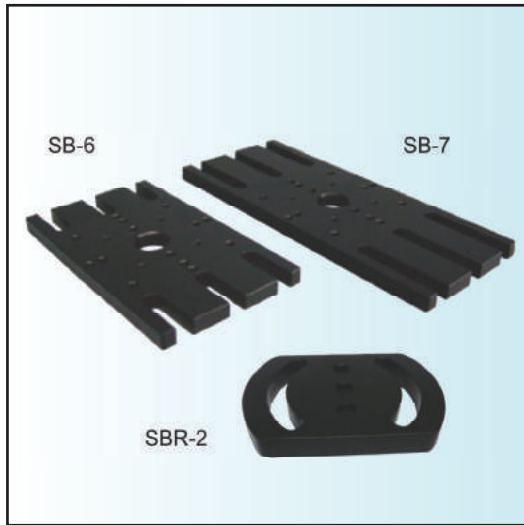
Motion Systems

Education Systems

Lasers

Optics & Crystals

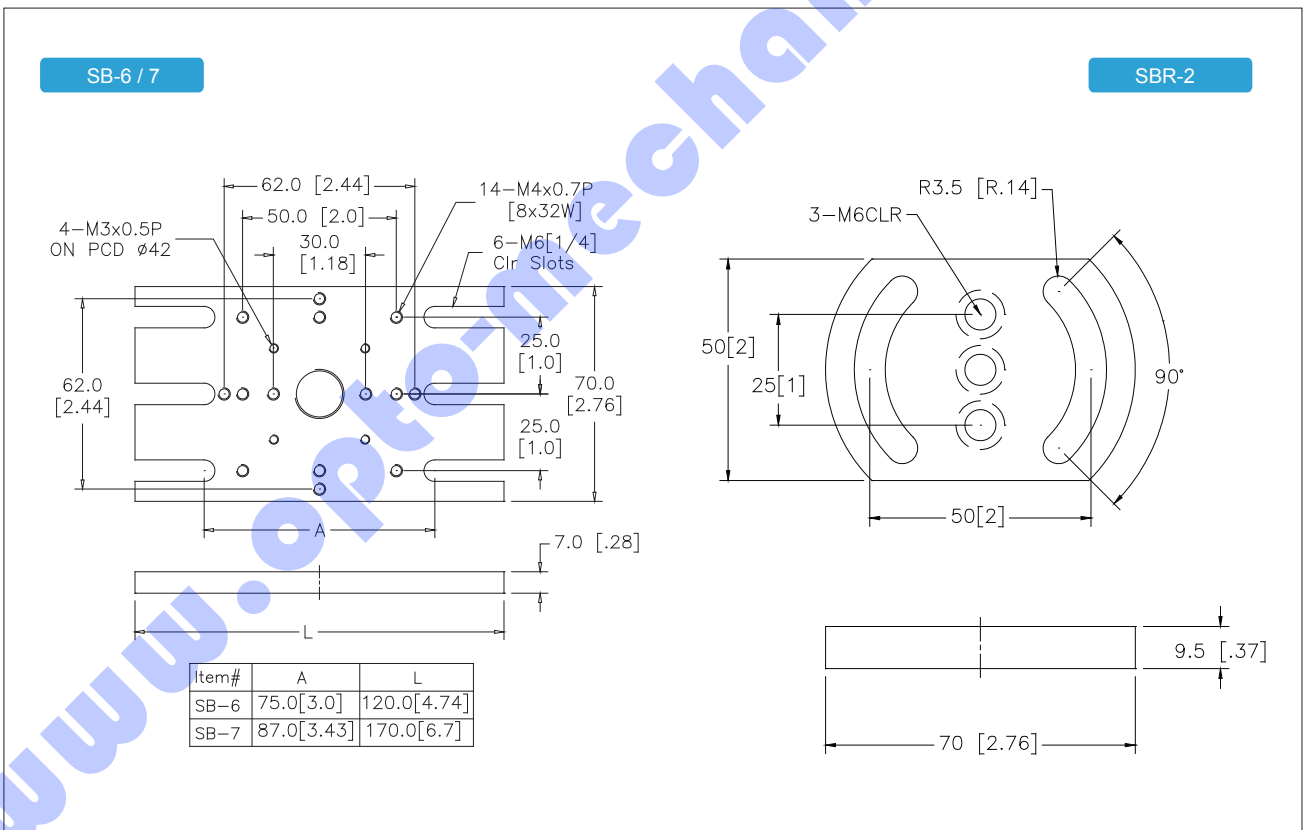
Other Equipment



Overview

- 9 surface dimensions for selection: SB- 05 / 1S / 1 / 2 / 3 / 4 / 5 / 6 / 7
- Compatible with rail and table mounting systems
- SBR-2: The base surface provides long 1/4" (M6) clearance slots while the front mounting surface offers a large array of 1/4"-20 (M6) mounting holes and counterbores
- Material: Aluminum
- Metric / Imperial Version available
- To order Imperial model please add * I-* to Item

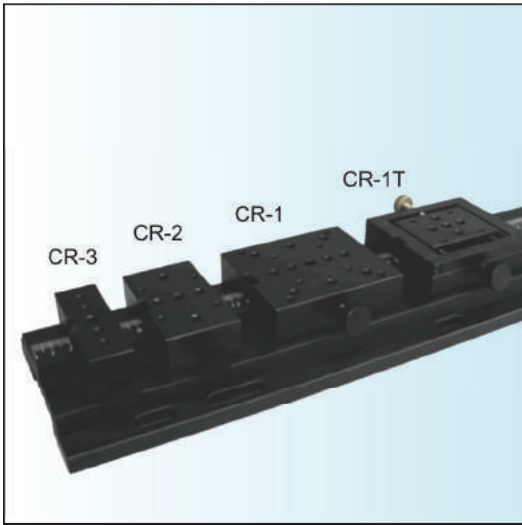
Specification & Item Numbers



Item Numbers

Item Number	Stage Surface mm (inch)	Thickness mm (inch)	Weight (kg)
SB-6	120X70 (4.72X2.76")	7	0.13
SB-7	170X70 (6.7X2.76")	7	0.18
SBR-2	70X50 (2.76X1.97")	9.5	0.10

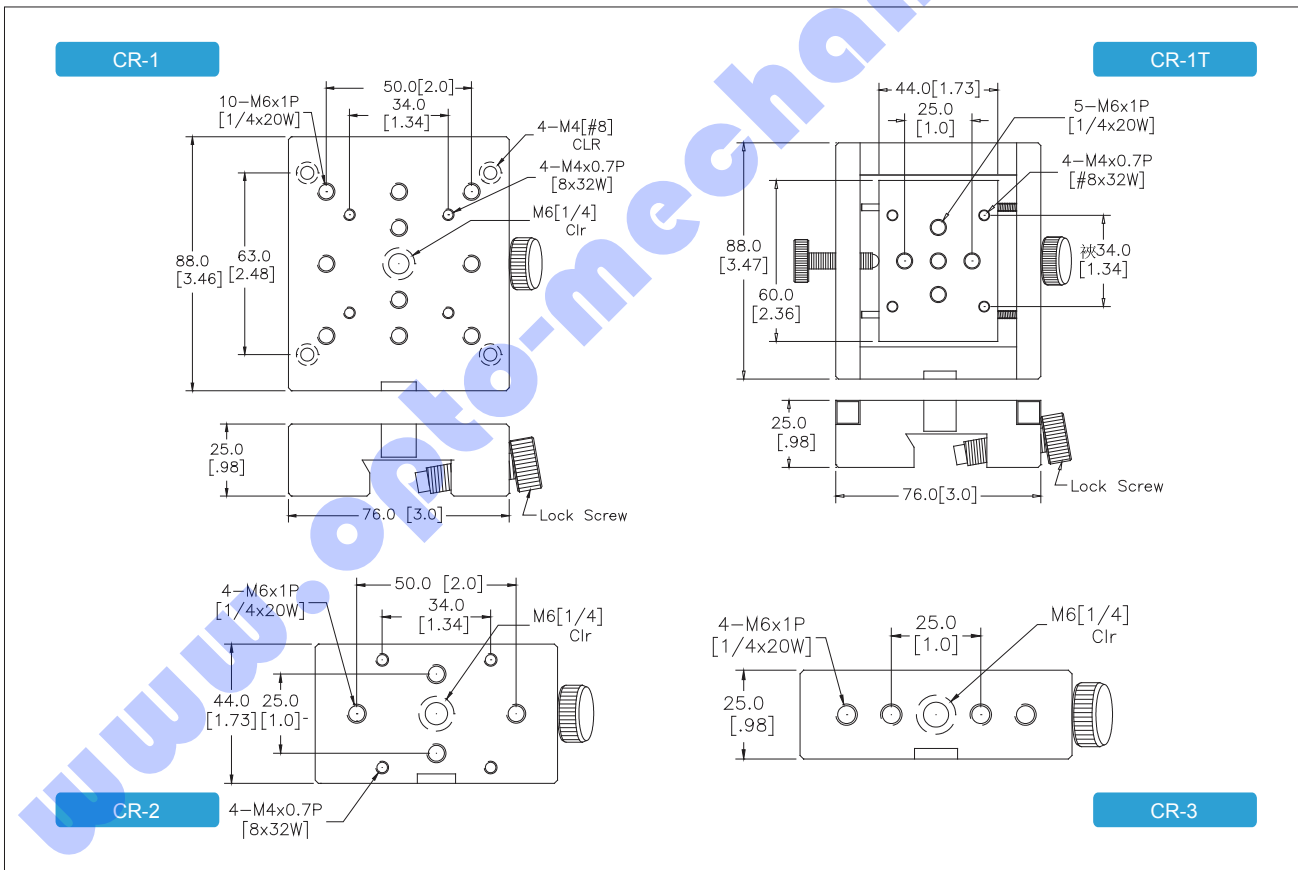
Optical Carriers



Overview

- Travel Range: 12.7 mm (0.5")
- CR-series Carriers compatible for OR-series or ORE-series rails
- With cave for reading the ruler
- CR-1T features leaner crossed roller -Bearing reaching higher resolution driven by 100-pitch screw
- Material: Aluminum
- Metric / Imperial Version
- To order Imperial model please add * I - * to Item

Specification & Item Numbers



Item Number	Length L mm (inch)	Weight (kg)
CR-1	76x88 (3x3.46")	0.35
CR-1T	76x88 (3x3.46")	0.37
CR-2	76x44 (3x1.73")	0.20
CR-3	76x25 (3x0.98")	0.12

Large Rails

Optical Tables

Stages

Optical Mounts

Components

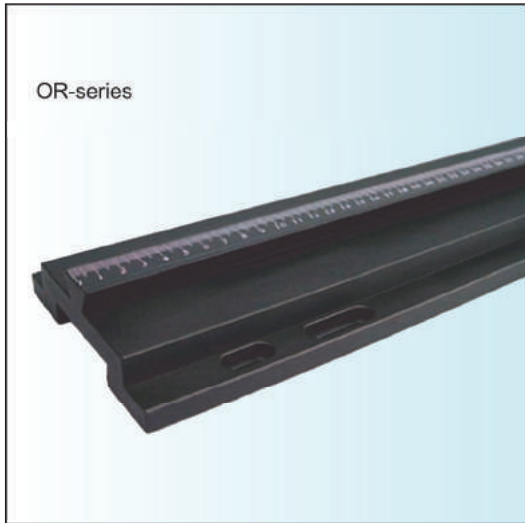
Motion Systems

Education Systems

Lasers

Optics & Crystals

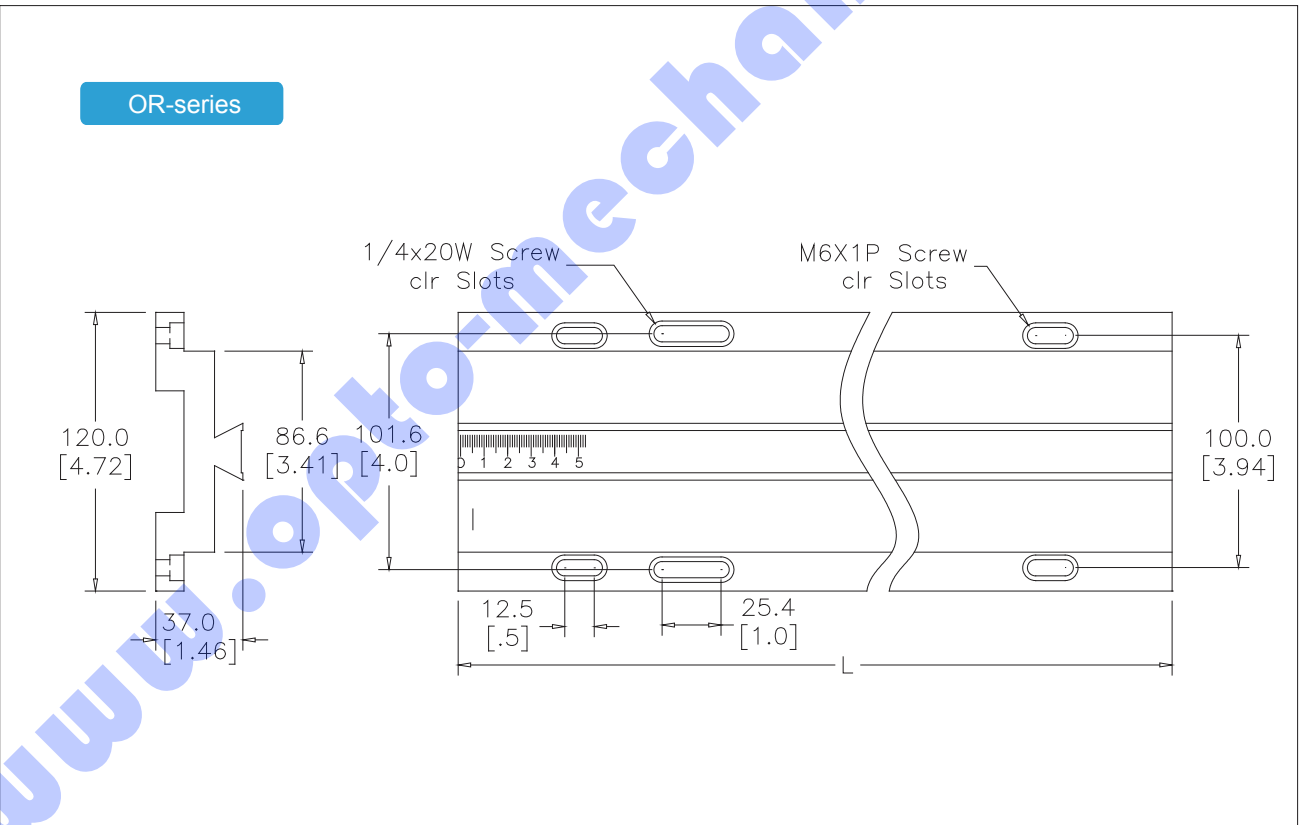
Other Equipment



Overview

- Typical Flatness : $\pm 0.05\text{mm}$ (per meter)
- Larger Dimension for higher stability and reaching heavy load
- Readout ruler for convenient positioning
- Material: Aluminum
- Metric / Imperial Version
- Accpet customized specification
- It can combine together if ORL is longer than 1 M.
- To order Imperial model please add * I-* to Item

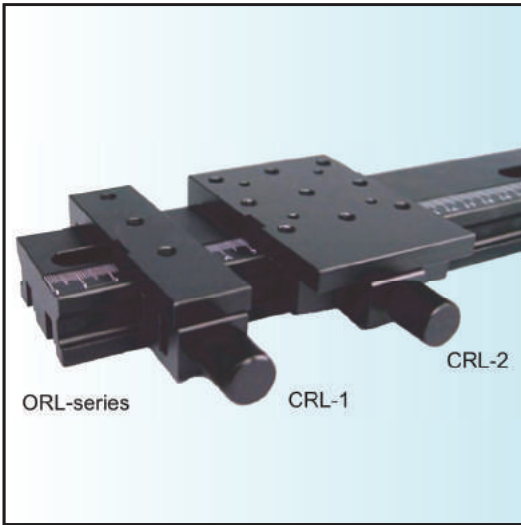
Specification & Item Numbers



Item Numbers

Item Number	Length L mm (inch)	Weight (kg)
OR-50	500 (19.7")	3.0
OR-75	750 (29.53")	4.5
OR-100	1000 (39.4")	6.0

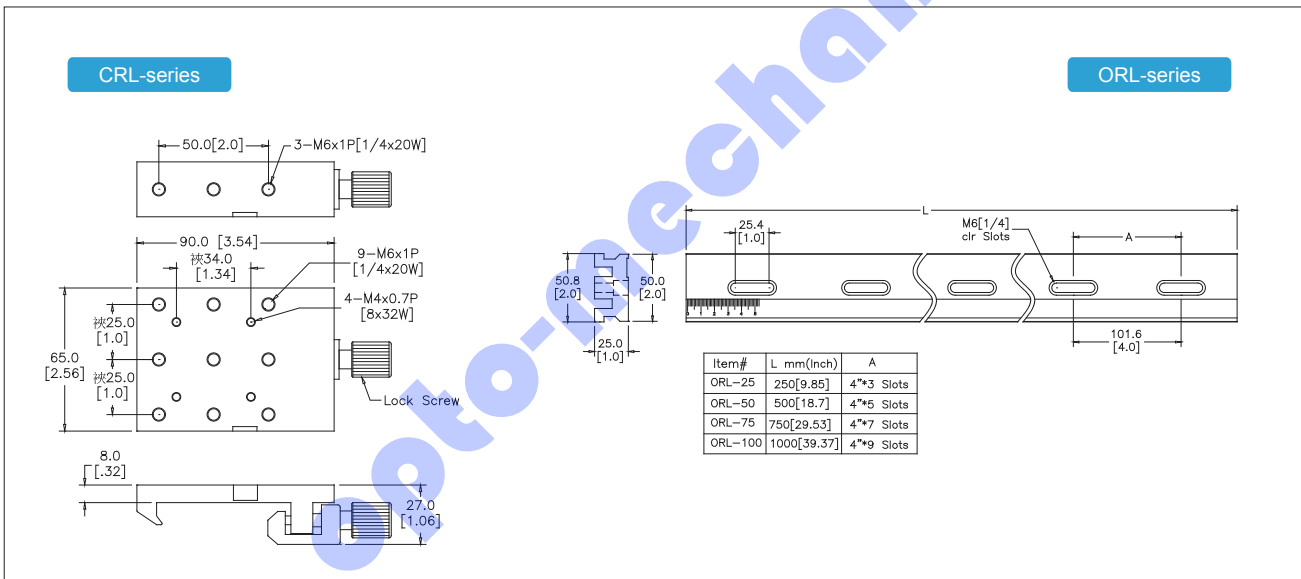
Medium-size Optical Rails & Carriers



Overview

- Length : 250 ~ 1000mm
- Typical Flatness : ± 0.05 mm per meter
- Easy to read engraved scales (mm)
- Carriers: Can use English or Metric tapped mounting holes
- To order Imperial model please add * I - * to Item

Specification & Item Numbers



Item Numbers

Item Number	Size mm (inch)	Weight (kg)
CRL-1	25x90 (1"x3.55")	0.10
CRL-2	65x90 (2.56"x3.55")	0.13

Item Number	Length mm (inch)	Number of Slots	Weight (kg)
ORL-25	250 (9.85")	4"x3 slots	0.60
ORL-50	500 (18.7")	4"x5 slots	1.10
ORL-75	750 (29.53")	4"x7 slots	1.60
ORL-100	1000 (39.37")	4"x9 slots	2.20

- Optical Tables
- Stages
- Optical Mounts
- Components
- Motion Systems
- Education Systems
- Lasers
- Optics & Crystals
- Other Equipment



ORE

Compact Optical Rails

Optical Tables

Stages

Optical Mounts

Components

Motion Systems

Education Systems

Lasers

Optics & Crystals

Other Equipment

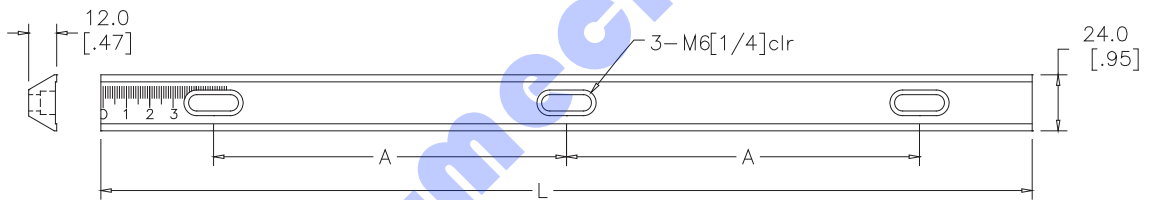


Overview

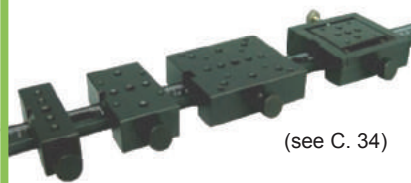
- Features space saving, compact and handy mounting directly to the breadboard or table
- Easy to read engraved scales (mm)
- Material: Aluminum
- Metric / Imperial Version
- To order Imperial model please add * I- * to Item

Specification & Item Numbers

ORE-series



APPLICATION



(see C. 34)

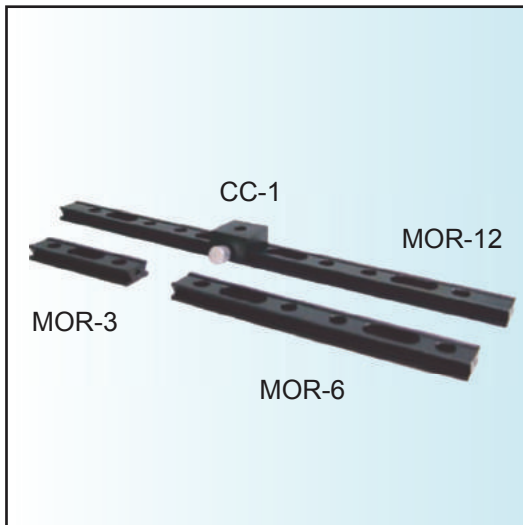
Can be used in combination

Item Numbers

Item Number	Length L mm (inch)	A mm (inch)	Weight (kg)
ORE-25	250 (9.85")	100 (4.0")	0.45
ORE-50	500 (19.7")	200 (8.0")	0.9



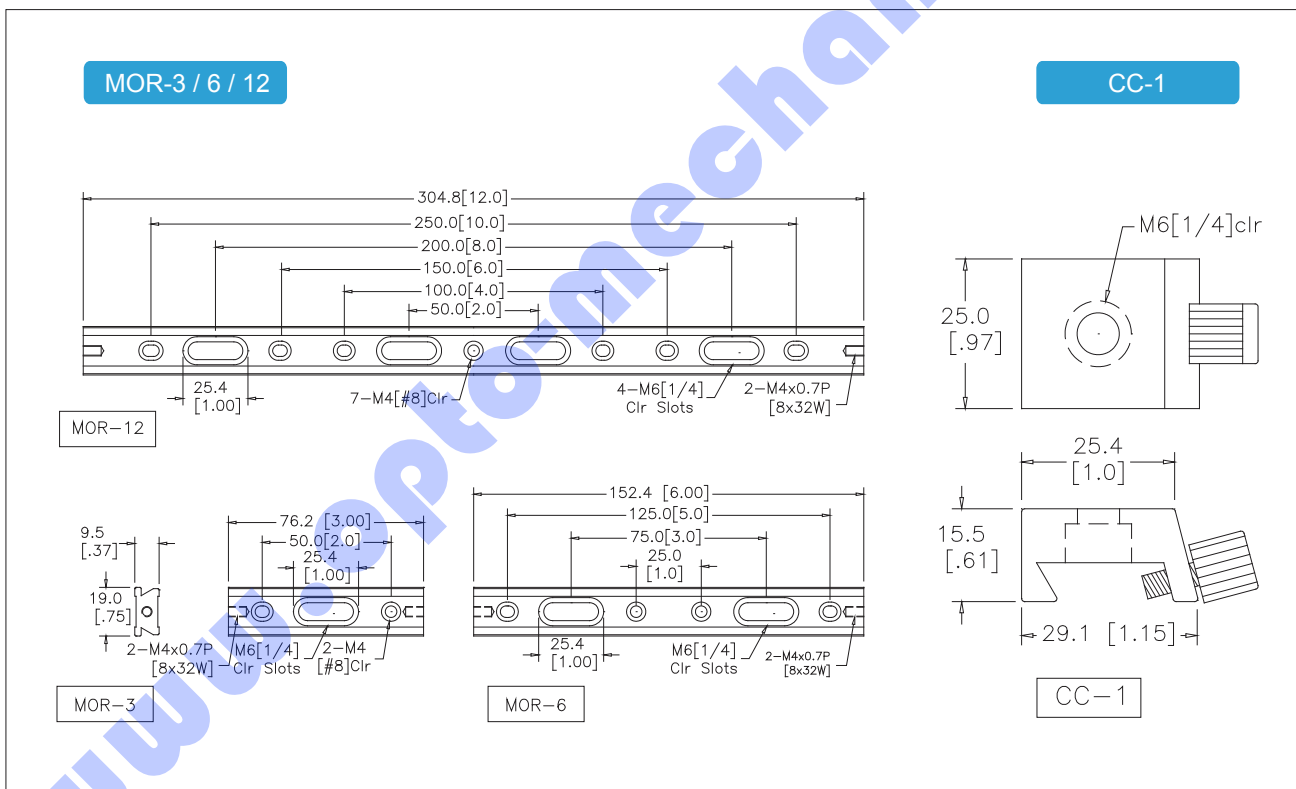
Miniatur Rail and Carriers



Overview

- Length : 76.2 ~ 304.8 mm
- Low cost and compact design
- Rigid, smooth carrier has free clamp to move firmly in position
- To order Imperial model please add * I - * to Item

Specification & Item Numbers



Item Numbers

Item Number	Length mm (inch)	Weight (kg)
MOR-3	76.2 (3")	0.01
MOR-6	152.4 (6")	0.03
MOR-12	304.8 (12")	0.05
CC-1	25.4x25.4 (1")	0.01



UMP

Universal Mounting Platforms

Optical Tables

Stages

Optical Mounts

Components

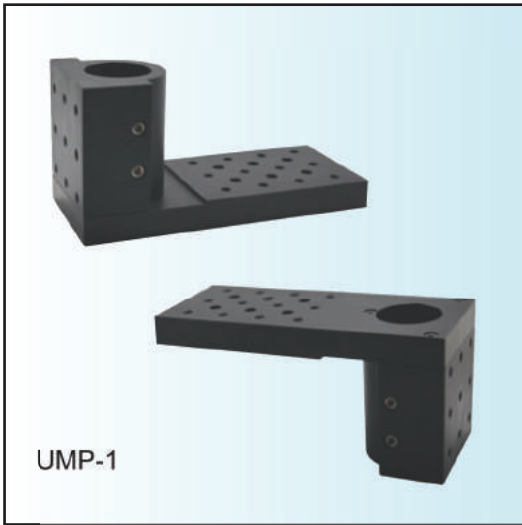
Motion Systems

Education Systems

Lasers

Optics & Crystals

Other Equipment

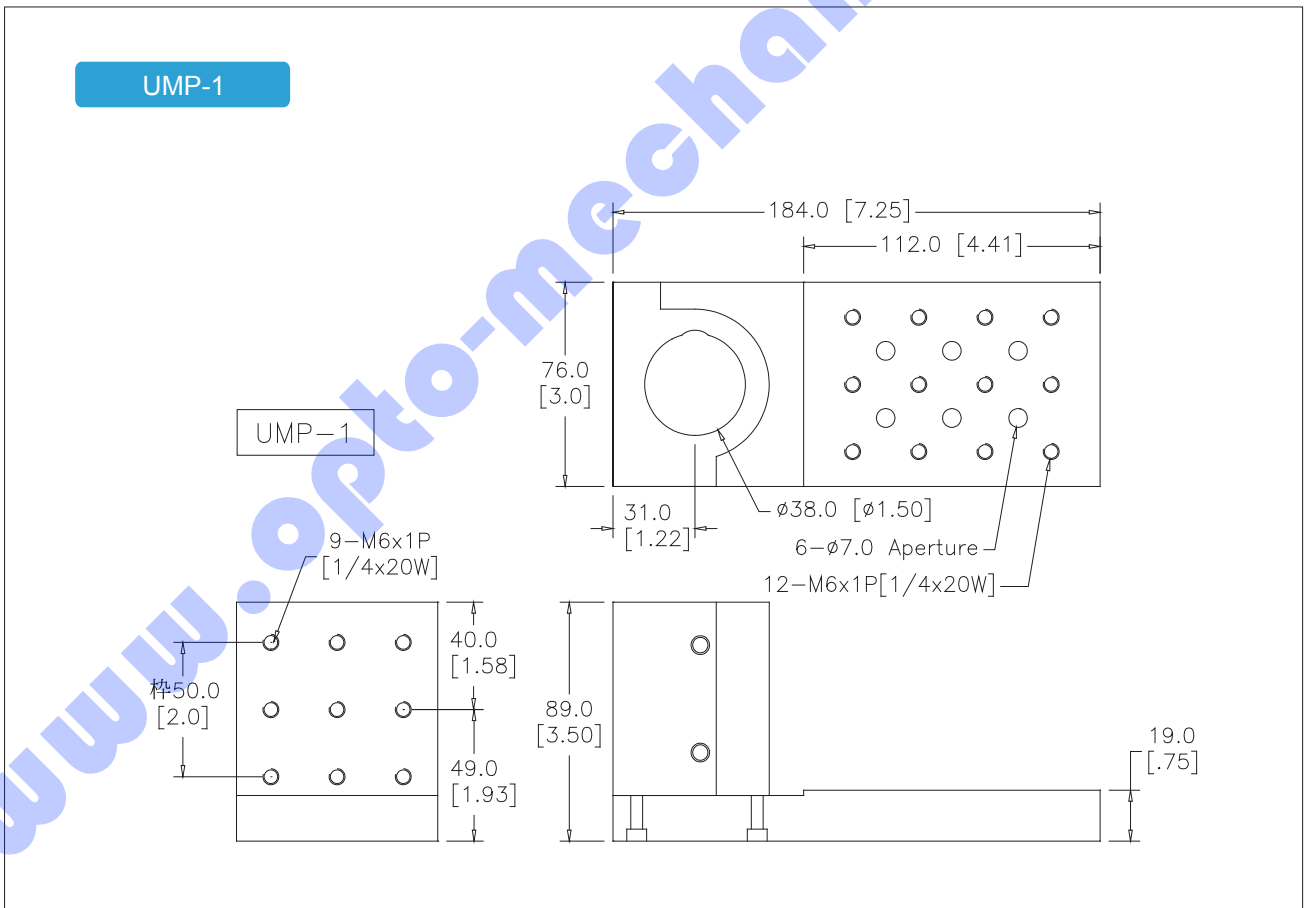


UMP-1

Overview

- Material: Aluminum (Black anodized)
- 1/4-20 (M6) threaded and clearance holes
- Two mounting surfaces-vertical and horizontal design
- Metric / Imperial version available
- To order Imperial model please add * I - * to Item

Specification & Item Numbers



Item Numbers

Item Number	Rods Diameter Ø mm (inch)	Stage surface : Horizontal mm (inch)	Stage surface : Vertical mm (inch)	Tapped Holes Pattern	Weight (kg)
UMP-1	38.1 (1.50")	38x76 (1.5"x3.0")	76x89 (3.0"x3.5")	M6x1P (1/4-20W)	1.51

Rod Clamps

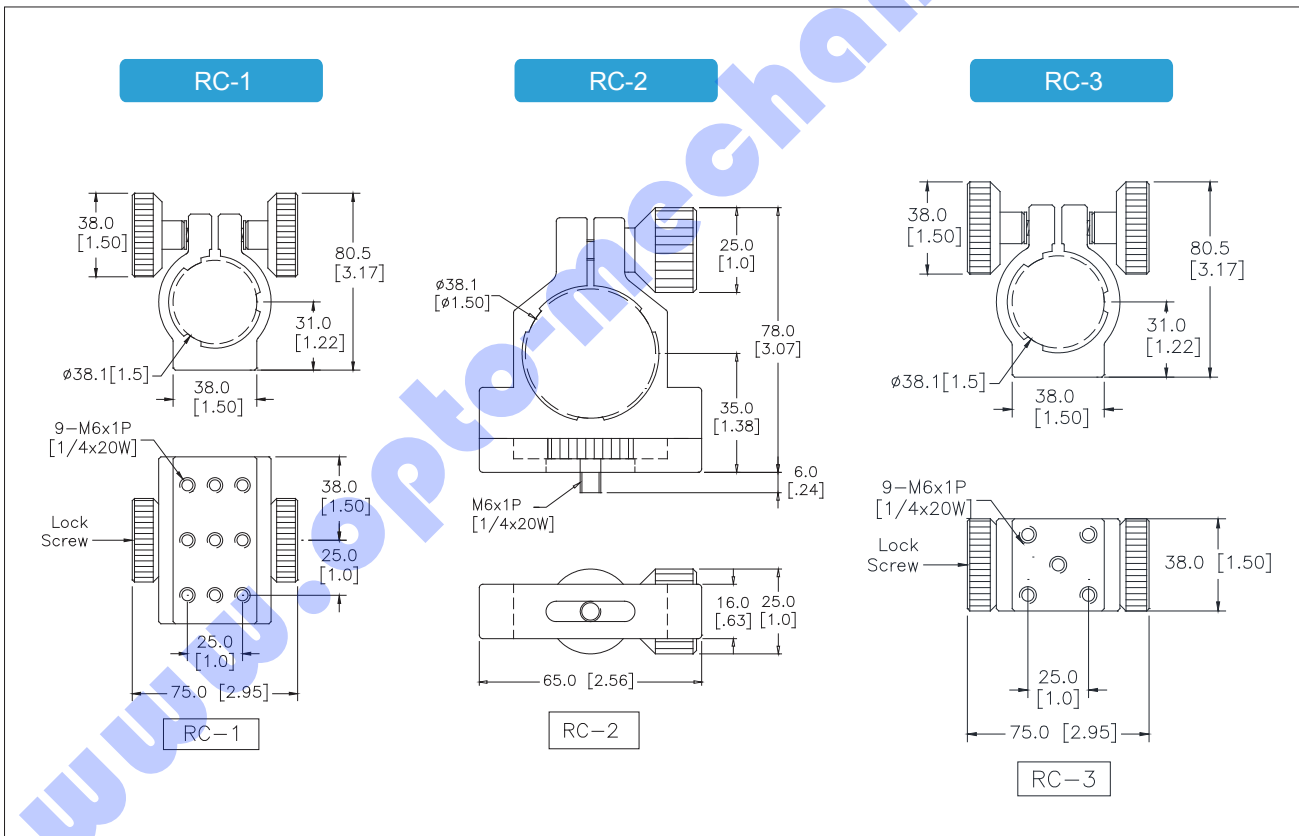


Overview

- Compatible for SRA-series solid rods
- Material: Aluminum
- Metric / Imperial Version
- To order Imperial model please add * I - * to Item



Specification & Item Numbers



Item Numbers

Item Number	Diameter ϕ C mm (inch)	Stage surface mm (inch)	Screw Hole
RC-1	38.1 (1.5")	38x76 (1.5x3")	M6x1P (1/4-20W)
RC-2	38.1 (1.5")	16x65 (0.63x2.56")	M6x1P (1/4-20W)
RC-3	38.1 (1.5")	38x38 (1.5x1.5")	M6x1P (1/4-20W)



SRA SR

Rods & Round Mounting Plates

Optical Tables

Stages

Optical Mounts

Components

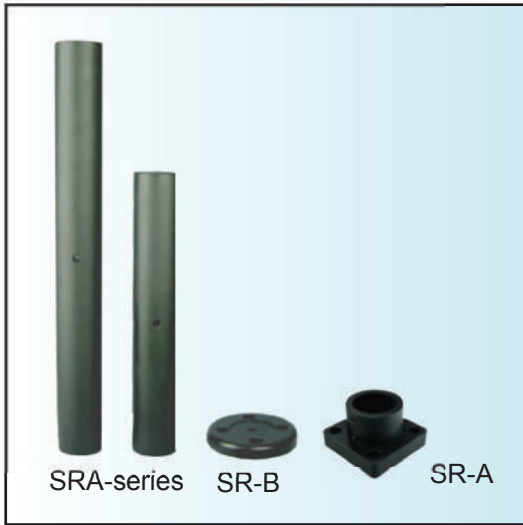
Motion Systems

Education Systems

Lasers

Optics & Crystals

Other Equipment



Overview

- Solid rod with side clearance hole for firm and stable fix
- Rods can be
 1. stacked to desired heights
 2. used in combination with UMP-1 Mounting Platform
 3. used in combination with SR-B round mounting plate
- Material: Aluminum
- Metric / Imperial Version
- To order Imperial model please add * I- * to Item

Specification & Item Numbers

SRA-series

SR-B

SR-A

APPLICATION

UMP-1 (see C. 39)

Can be used in combination with UMP-1 Mounting Platform

APPLICATION

Item Number	Length L mm (inch)	Diameter Ø mm (inch)	Weight (kg)
SRA-75	75 (2.95")	38 (1.5")	0.23
SRA-150	150 (5.9")	38 (1.5")	0.46
SRA-250	250 (9.84")	38 (1.5")	0.76
SRA-350	350 (13.78")	38 (1.5")	1.07
SRA-500	500 (19.7")	38 (1.5")	1.52
SRA-600	600 (23.6")	38 (1.5")	1.90
SR-A	SIZE: 70X70X36		0.20
SR-B	SIZE: Ø76X16		0.10

Rack Gear Rod Clamps



Overview

- SRC-1 complete systems include one rack geared rod clamp (RG-3) featuring rack gear design for pinion positioning of height setting and one stainless rod and bottom plate
- RG-3 rod clamp with wide selection of mounting holes on mounting platform and is clamped onto the rod by tightening a knurled knob

- Optical Tables
- Stages
- Optical Mounts
- Components
- Motion Systems
- Education Systems
- Lasers
- Optics & Crystals
- Other Equipment

Specification & Item Numbers

SRC-1 / RG-3

Technical drawing showing dimensions for SRC-1 / RG-3:

- Top width: 50 [2]
- Top width (inner): 34 [1.34]
- Mounting holes: 8-M4[#8-32W], 9-M6[1/4-20W]
- Left side height: 50 [2]
- Left side height (inner): 25 [1]
- Right side width: 34 [1.34]
- Right side width (total): 85 [3.35]
- Bottom plate thickness: 33 [1.30]
- Bottom plate width: 190 [7.49]
- Bottom plate width (total): 250 [9.85]
- Overall height: 300 [11.8]



AB

Angle Brackets

BEST



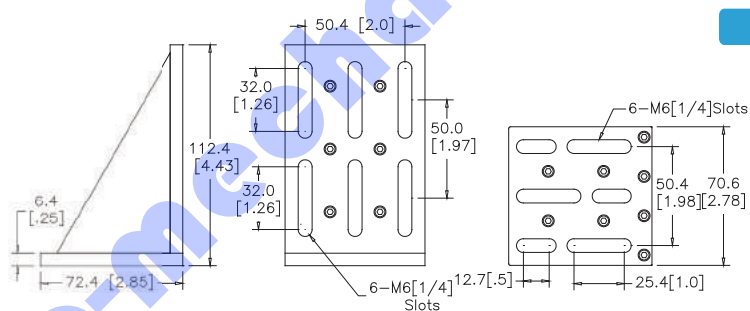
Overview

- Application: Allows assembly with optical tables, and components
- Economic / Space saving designs
- 8 styles for different applications
- Imperial (1/4~20) or Metric (M6) tapped mounting holes
- Laser engraved scales
- Material: Aluminum (Black anodized)
- Metric / Imperial Version
- To order Imperial model please add * I-* to Item

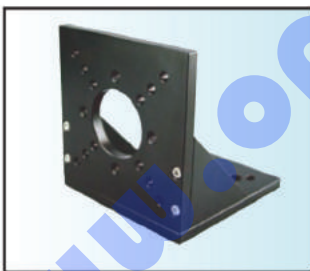
Specification & Item Numbers



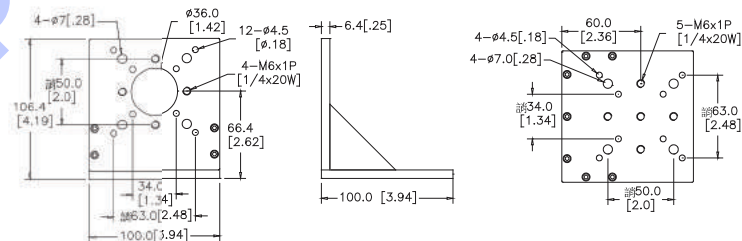
AB-1N



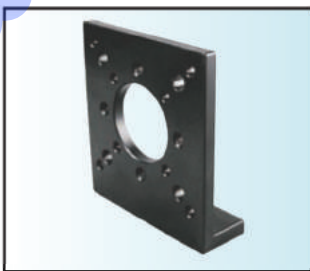
AB-1N



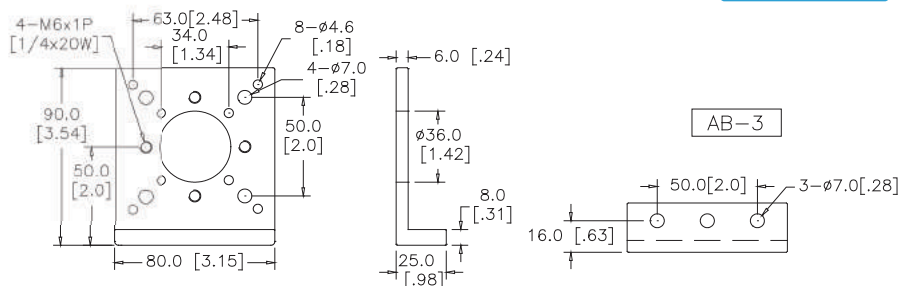
AB-2



AB-2



AB-3



AB-3

Optical Tables

Stages

Optical Mounts

Components

Motion Systems

Education Systems

Lasers

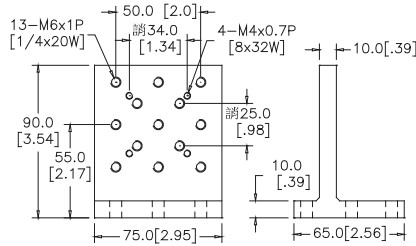
Optics & Crystals

Other Equipment

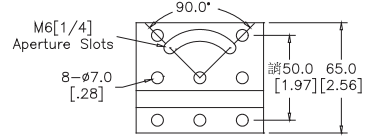




AB-4



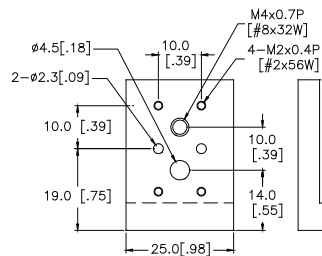
AB-4



AB-4

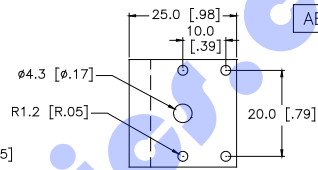


AB-25

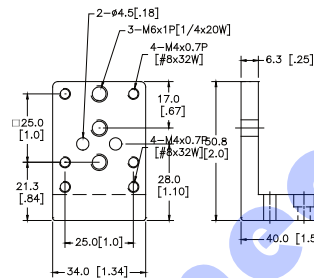


AB-25

AB-25

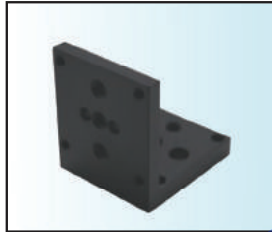


AB-34

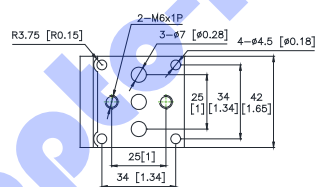


AB-34

AB-34

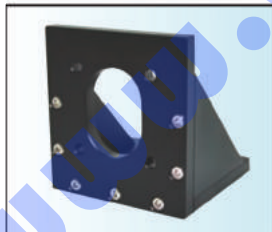
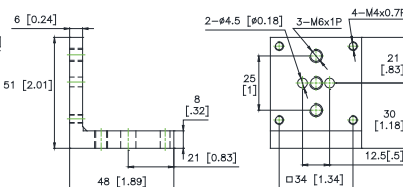


AB-42

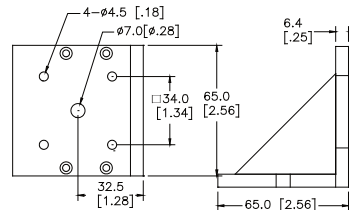


AB-42

AB-42

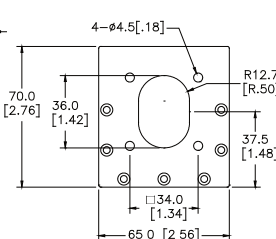


AB-65



AB-65

AB-65



Item Number	Height mm (inch)	Weight (kg)	Item Number	Height mm (inch)	Weight (kg)
AB-1N	112 (4.4")	0.27	AB-25	34 (1.34")	0.02
AB-2	116 (4.57")	0.37	AB-34	50 (1.97")	0.06
AB-3	90 (3.55")	0.12	AB-42	50 (1.97")	0.06
AB-4	90 (3.55")	0.27	AB-65	70 (2.76")	0.18