



Production Line A

Optical Tables

Optical Tables

Stages

Optical Mounts

Components

Motion Systems

Education Systems

Lasers

Optics & Crystals

Other Equipment

Products Categories



New Products

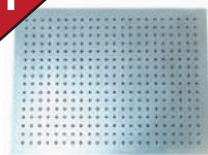


Best Seller

1

Breadboards

1



BRS-series A.05

2

Active Isolators

2



LTA-series A.09

BEST

2



LTB-series A.10

2

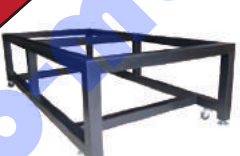


LTC-series A.11

3

Non-Isolating Frames

3



LTE-series A.12

3



OTE-series A.14

4

Optical Tables

4



AOT-series A.16

4



BOT-series A.17

4



OTA-series A.18

5

Accessories

5



Compressor A.21

5



OTH-series A.22

5



OTHR-series A.22

Purchasing Process



Decide your tabletop size



Select (Non) vibration isolators
(Table standard 85 cm height)



Dark Room



Shelf Accessories

How to choose the right tables

Choose table size and table thickness

Optical tables are offered in an array of sizes, both imperial and metric to meet many application needs. The size ranges from 60cm x 90 cm (2ft x 3 ft) to 300cm x 240cm (10ft x 8ft) Each table series is offered in two imperial and two metric thickness. The thicker tables are stiffer, yielding a higher resonant frequency, from 2.5 cm to 20cm. Customized sizes and joined configuration can also be manufactured to meet your needs.

Determine Vibration or Non-vibration

OP Mount offers three series of vibration isolators and one type of NonVibration isolator to meet virtually all requirements.

Determine Table Height

OP Mount simplifies the table height selection to be 85 cm as the standard and most common used height. Customers may also request for other desirable heights to meet their own needs.

Add desired options (for customized tables)

We offers several standard options including laser parts, mounting for accessory shelves, black finish. Customized cutouts and hole patterns are easily accommodated. We can also provides special heights for our wide range of isolators.

4



OTB-series A.19

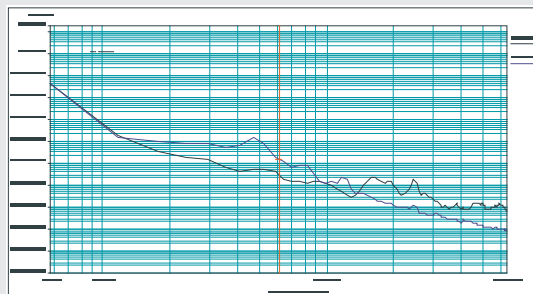
4



OTC-series A.20

Vibration Performance Inspection

In order to strictly inspects all optical table after manufactured to assure the vibration achieves the best performance, Op Mount Purchase a new software to inspect each Optical Table.





Vibration Performance Inspection

Optical Tables

Stages

Optical Mounts

Components

Motion Systems

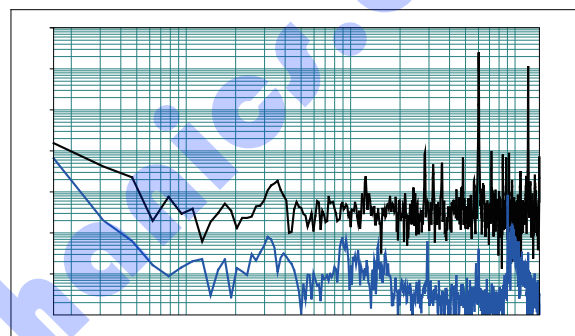
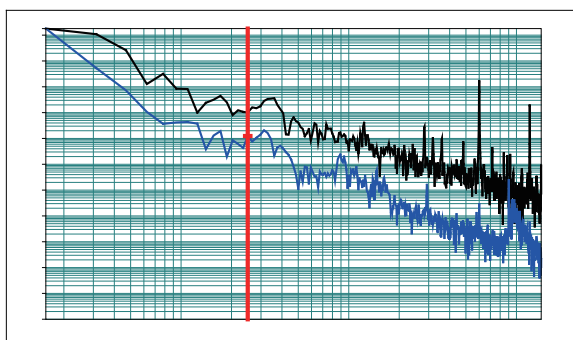
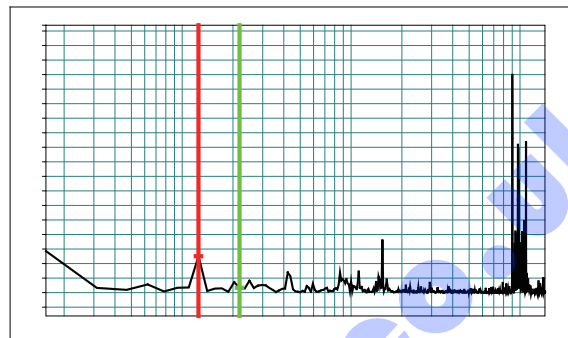
Education Systems

Users

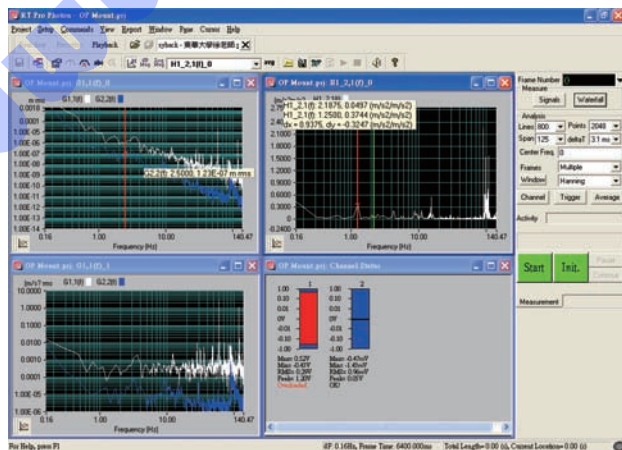
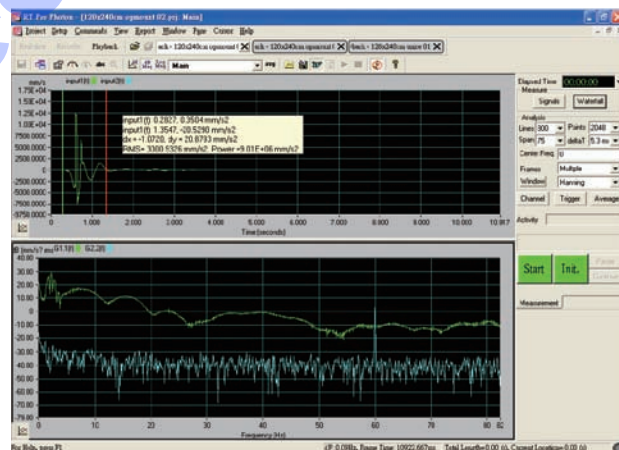
Optics & Crystals

Other Equipment

➤ In order to strictly inspect all optical table after manufactured to assure the vibration achieves the best performance, Op Mount Purchase a new software to inspect each Optical Table.



resume speed report ➤



➤ Anti-vibration testing report





Ordering Information

Item Number	Size(cm)		Table Item Number(Metric/inch)	Table Size(cm)		Leg Item Number	Leg Height(cm)
OTA120360-30	120x360x85	=	BRS120300-30	120x360x30	+	LTA120300-55	55
OTC120360-30			BRS120300-30			LTC-55	
OTE120360-30			BRS120300-30			LTE120300-55	
OTA120300-30	120x300x85	=	BRS120300-30	120x300x30	+	LTA120300-55	
OTC120300-30			BRS120300-30			LTC-55	
OTE120300-30			BRS120300-30			LTE120300-55	
OTA120240-30	120x240x85	=	BRS120240-30	120x240x30	+	LTA120240-55	
OTC120240-30			BRS120240-30			LTC-55	
OTE120240-30			BRS120240-30			LTE120240-55	
OTA120180-30	120x180x85	=	BRS120180-30	120x180x30	+	LTA120240-55	
OTC120180-30			BRS120180-30			LTC-55	
OTE120180-30			BRS120180-30			LTE120240-55	
OTA120150-30	120x150x85	=	BRS120150-30	120x150x30	+	LTA120150-55	
OTC120150-30			BRS120150-30			LTC-55	
OTE120150-30			BRS120150-30			LTE120150-55	
OTA100200-30	100x200x85	=	BRS100200-30	100x200x30	+	LTA100200-55	65
OTC100200-30			BRS100200-30			LTC-55	
OTE100120-30			BRS100200-30			LTE100200-55	
OTA120300-20	120x300x85	=	BRS120300-20	120x300x20	+	LTA120300-65	
OTC120300-20			BRS120300-20			LTC-65	
OTE120300-20			BRS120300-20			LTE120300-65	
OTA120240-20	120x240x85	=	BRS120240-20	120x240x20	+	LTA120240-65	
OTC120240-20			BRS120240-20			LTC-65	
OTE120240-20			BRS120240-20			LTE120240-65	
OTA120180-20	120x180x85	=	BRS120180-20	120x180x20	+	LTA120240-65	
OTC120180-20			BRS120180-20			LTC-65	
OTE120180-20			BRS120180-20			LTE120240-65	
OTA120150-20	120x150x85	=	BRS120150-20	120x150x20	+	LTA120150-65	
OTC120150-20			BRS120150-20			LTC-65	
OTE120150-20			BRS120150-20			LTE120150-65	
OTA100200-20	100x200x85	=	BRS100200-20	100x200x20	+	LTA100200-65	
OTC100200-20			BRS100200-20			LTC-65	
OTE100120-20			BRS100200-20			LTE100200-65	
OTB90180-20	90x180x85	=	BRS90180-20	90x180x20	+	LTB90180-65	75
OTC90180-20			BRS90180-20			LTC-65	
OTE90180-20			BRS90180-20			LTE90180-65	
OTB90150-20	90x150x85	=	BRS90150-20	90x150x20	+	LTB90150-65	
OTC90150-20			BRS90150-20			LTC-65	
OTE90150-20			BRS90150-20			LTE90150-65	
OTB90120-20	90x120x85	=	BRS90120-20	90x120x20	+	LTB12090-65	
OTC90120-20			BRS90120-20			LTC-65	
OTE90120-20			BRS90120-20			LTE12090-65	
OTA120150-10	120x150x85	=	BRS120150-10	120x150x10	+	LTA120150-75	75
OTC120150-10			BRS120150-10			LTC-75	
OTE120150-10			BRS120150-10			LTE120150-75	
OTB90180-10	90x180x85	=	BRS90180-10	90x180x10	+	LTB90180-75	
OTC90180-10			BRS90180-10			LTC-75	
OTE90180-10			BRS90180-10			LTE90180-75	
OTB90150-10	90x150x85	=	BRS90150-10	90x150x10	+	LTB90150-75	
OTC90150-10			BRS90150-10			LTC-75	
OTE90150-10			BRS90150-10			LTE90150-75	
OTB90120-10	90x120x85	=	BRS90120-10	90x120x10	+	LTB90120-75	
OTC90120-10			BRS90120-10			LTC-75	
OTE90120-10			BRS90120-10			LTE90120-75	
OTB7590-10	75x90x85	=	BRS7590-10	75x90x85	+	LTB7590-75	75
OTE7590-10			BRS7590-10			LTE7590-75	

Optical Tables

Stages

Optical Mounts

Components

Motion Systems

Education Systems

Larers

Optics & Crystals

Other Equipment



BRS

Honeycomb Breadboard

Optical Tables

Stages

Optical Mounts

Components

Motion Systems

Education Systems

Lasers

Optics & Crystals

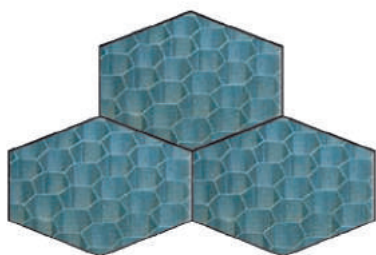
Other Equipment

Overview

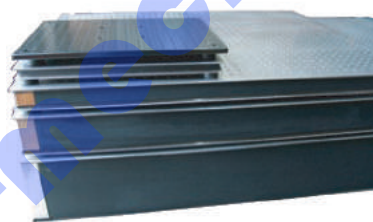
- 50 different models and dimensions for selection
- Top & Bottom plate: 430-series Magnetic stainless steel
- Stainless Plate Thickness: 3.0 ~ 4.0 mm
- Flatness: ± 0.1 mm over 60 x 60 cm
- Screw Pattern: $\frac{1}{4}$ x 20W per inch (Imperial version)
M6 per 25 mm (Metric Version)
- Inner Structure: Steel high density honeycomb core
- Proprietary tuned and broadband damping
- Finish: Top plate is brush finished
- Any question that regarding the optical table weight, please contact us
- To order Imperial model please add *-I-* to item number

Specification

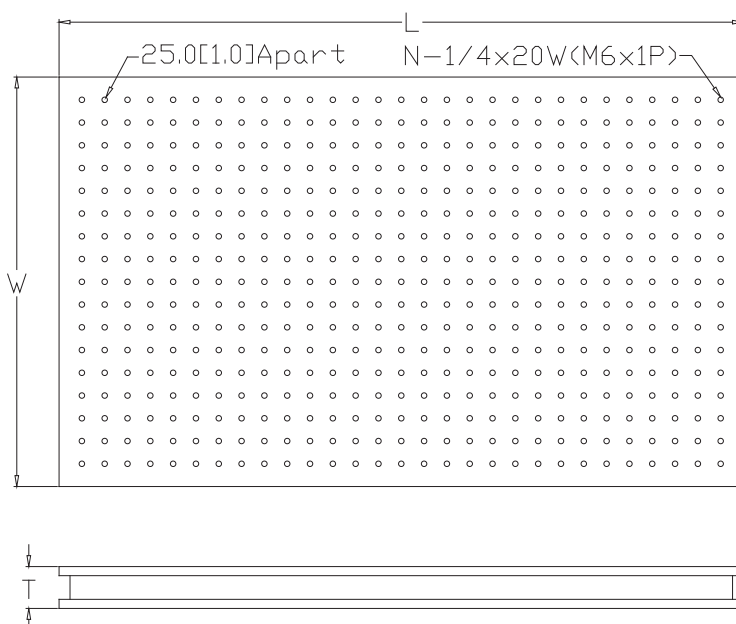
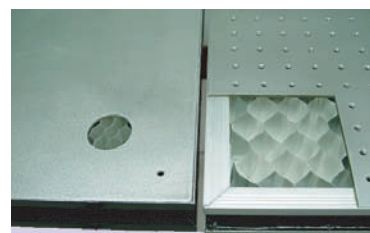
Honeycomb inner structure



Various sizes for selection



Stainless steel top and bottom plates





Item Numbers

- **W** = Width
- **L** = Length
- **T** = Thickness
- **N** = Total screw holes

- To order Imperial model please add *-I-* to item number

Item Number	W (cm / feet)	L (cm / feet)	T (cm / inch)	N (Total screw holes)
BRS-3030-025	30 / 1'	30 / 1'	2.5 / 1.18"	121
BRS-3030-05	30 / 1'	30 / 1'	5 / 1.96"	121
BRS-3045-025	30 / 1'	45 / 1.5'	2.5 / 1.18"	187
BRS-3045-05	30 / 1'	45 / 1.5'	5 / 1.96"	187
BRS-3060-05	30 / 1'	60 / 2'	5 / 1.96"	253
BRS-3060-10	30 / 1'	60 / 2'	10 / 4"	253
BRS-4560-05	45 / 1.5'	60 / 2'	5 / 1.96"	391
BRS-4560-10	45 / 1.5'	60 / 2'	10 / 4"	391
BRS-4575-05	45 / 1.5'	75 / 2.5'	5 / 1.96"	493
BRS-4575-10	45 / 1.5'	75 / 2.5'	10 / 4"	493
BRS-6075-05	60 / 2'	75 / 2.5'	5 / 1.96"	667
BRS-6075-10	60 / 2'	75 / 2.5'	10 / 4"	667
BRS-6090-05	60 / 2'	90 / 3'	5 / 1.96"	805
BRS-6090-10	60 / 2'	90 / 3'	10 / 4"	805
BRS-6090-20	60 / 2'	90 / 3'	20 / 8"	805
BRS-60120-05	60 / 2'	120 / 4'	5 / 1.96"	1081
BRS-60120-10	60 / 2'	120 / 4'	10 / 4"	1081
BRS-60120-20	60 / 2'	120 / 4'	20 / 8"	1081
BRS-7590-05	75 / 2.5'	90 / 3'	5 / 1.96"	1015
BRS-7590-10	75 / 2.5'	90 / 3'	10 / 4"	1015
BRS-75120-05	75 / 2.5'	120 / 4'	5 / 1.96"	1363
BRS-75120-10	75 / 2.5'	120 / 4'	10 / 4"	1363
BRS-75120-20	75 / 2.5'	120 / 4'	20 / 8"	1363
BRS-90120-05	90 / 3'	120 / 4'	5 / 1.96"	1645
BRS-90120-10	90 / 3'	120 / 4'	10 / 4"	1645
BRS-90120-20	90 / 3'	120 / 4'	20 / 8"	1645
BRS-90150-05	90 / 3'	150 / 5'	5 / 1.96"	2065
BRS-90150-10	90 / 3'	150 / 5'	10 / 4"	2065
BRS-90150-20	90 / 3'	150 / 5'	20 / 8"	2065
BRS-90180-05	90 / 3'	180 / 6'	5 / 1.96"	2485
BRS-90180-10	90 / 3'	180 / 6'	10 / 4"	2485
BRS-90180-20	90 / 3'	180 / 6'	20 / 8"	2485
BRS-100200-10	100 / 3.3'	200 / 6.6'	10 / 4"	3081
BRS-100200-20	100 / 3.3'	200 / 6.6'	20 / 8"	3081
BRS-100200-30	100 / 3.3'	200 / 6.6'	30 / 11.8"	3081

► More item numbers in the following page



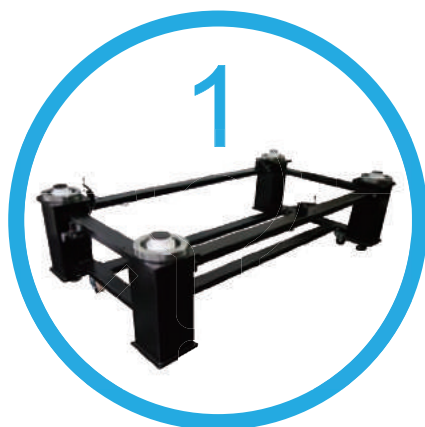
- **W** = Width
- **L** = Length
- **T** = Thickness
- **N** = Total screw holes
- To order Imperial model please add *-I-* to item number

Item Number	W (cm / feet)	L (cm / feet)	T (cm / inch)	N (Total screw holes)
BRS-120120-10	120 / 4'	120 / 4'	10 / 4"	2304
BRS-120120-20	120 / 4'	120 / 4'	20 / 8"	2304
BRS-120120-30	120 / 4'	120 / 4'	30 / 11.8"	2304
BRS-120180-10	120 / 4'	180 / 6'	10 / 4"	3337
BRS-120180-20	120 / 4'	180 / 6'	20 / 8"	3337
BRS-120180-30	120 / 4'	180 / 6'	30 / 11.8"	3337
BRS-120240-10	120 / 4'	240 / 8'	10 / 4"	4465
BRS-120240-20	120 / 4'	240 / 8'	20 / 8"	4465
BRS-120240-30	120 / 4'	240 / 8'	30 / 11.8"	4465
BRS-120300-10	120 / 4'	300 / 10'	10 / 4"	5593
BRS-120300-20	120 / 4'	300 / 10'	20 / 8"	5593
BRS-120300-30	120 / 4'	300 / 10'	30 / 11.8"	5593
BRS-120360-10	120 / 4'	360 / 12'	10 / 4"	6912
BRS-120360-20	120 / 4'	360 / 12'	20 / 8"	6912
BRS-120360-30	120 / 4'	360 / 12'	30 / 11.8"	6912

◀ More item numbers in the previous page

3 TYPES of ACTIVE ISOLATORS

3 types of active isolators with more than 22 designs to choose from. QC reports, manual, and warranty are included. Customized specification is accepted by request.



LTA-seires ▶ A. 09



LTB-seires ▶ A. 10



LTC-seires ▶ A. 11

Our active isolation system

presents the highest performance solution for isolating floor vibrations and noises in the range of 3 to 50 Hz. These high end self leveling isolators provide robust vibration isolation with excellent vertical and horizontal stability. With a vertical resonance frequency of 1.35Hz this isolation system is an ideal solution for demanding photonic applications such as interferometry, holography, nano-positioning and for noisy environment such as labs on high floors.

Self leveling isolators are large diameter free-standing systems that provide maximum stability and safety, without cumbersome tie bars. The low vertical and horizontal transmissibility of these isolators results in the least possible relative table top motion. The proprietary design uses no liquids that could leak or degrade over time.

To allow for changes in load distribution, our isolators also feature a self leveling system that incorporates precision three way valves that do not compromise vertical isolation when the system is at rest. Because these valves are actuated by tabletop movement, the system returns to its original level position within 0.25 mm (0.01") after disturbances. The valves also automatically compensate for any changes in table top load distribution. Additionally, this system allows the table height to be adjusted over a range of 26 mm (1.02") and can be used to compensate for an uneven floor. The isolators require a constant supply of air. When the air supply is removed, the tabletop resets securely on top of the legs with the isolation system disabled.



LTA

Active Isolator - LTA-series

Optical Tables

Stages

Optical Mounts

Components

Motion Systems

Education Systems

Lasers

Optics & Crystals

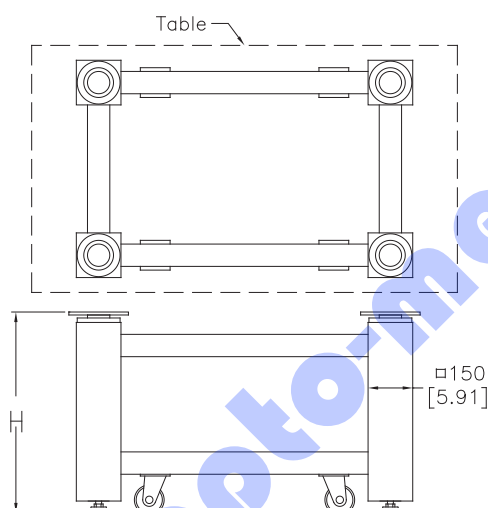
Other Equipment



Overview

- 11 different models and dimensions for selection
- A set of four active isolators (square)
- Load: 1000 kg
- Finish: Ivory or Black paint
- Vertical and horizontal vibration isolation
- Equipped with casters for easy movement
- QC reports, manual, and warranty included
- Metric / Imperial versions available
- Any question that regarding the optical table weight, please contact us
- To order Imperial model please add *-I-* to item number

Specification



Customized Design

ACCEPTED

Customized Designs
Welcomed by request

Item Numbers

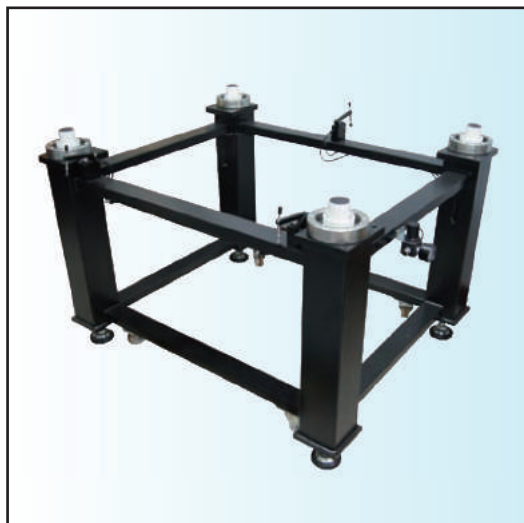
- **W** = Width / **T** = Thickness / **H** = Support Height

- To order Imperial model please add *-I-* to item number

Item Number	W (cm / feet)	L (cm / feet)	H (cm / inch)
LTA-100200-55-4	100 / 3.3'	200 / 6.6'	55 / 21.6"
LTA-100200-65-4	100 / 3.3'	200 / 6.6'	65 / 25.6"
LTA-120150-55-4	120 / 4'	150 / 5'	55 / 21.6"
LTA-120150-65-4	120 / 4'	150 / 5'	65 / 25"
LTA-120150-75-4	120 / 4'	150 / 5'	75 / 29.5"
LTA-120240-55-4	120 / 4'	240 / 8'	55 / 21.6"
LTA-120240-65-4	120 / 4'	240 / 8'	65 / 25"
LTA-120300-55-4	120 / 4'	300 / 10'	55 / 21.6"
LTA-120300-65-4	120 / 4'	300 / 10'	65 / 25"
LTA-120360-55-6	120 / 4'	360 / 12'	55 / 21.6"
LTA-120360-65-6	120 / 4'	360 / 12'	65 / 25"



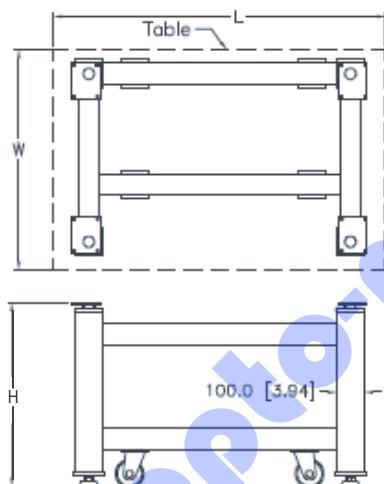
Active Isolator - LTB-series



Overview

- 10 different models and dimensions for selection
- A set of four active isolators (square)
- Load: 300 kg
- Finish: Ivory or Black paint
- Self-leveling for constant height
- Equipped with casters for easy movement
- QC reports, manual, and warranty included
- Metric / Imperial versions available
- Any question that regarding the optical table weight, please contact us
- To order Imperial model please add *-I-* to item number

Specification



Customized Design

ACCEPTED

Customized Designs
Welcomed by request

Item Numbers

- **W** = Width / **L** = Length / **H** = Support Height

- To order Imperial model please add *-I-* to item number

Item Number	W (cm / feet)	L (cm / feet)	H (cm / inch)
LTB-7590-65	75 / 3'	90 / 2.3'	65 / 25.5"
LTB-7590-75	75 / 3'	90 / 2.3'	75 / 29.5"
LTB-60120-65	60 / 4'	120 / 2'	65 / 25.5"
LTB-60120-75	60 / 4'	120 / 2'	75 / 29.5"
LTB-90120-65	90 / 4'	120 / 3'	65 / 25.5"
LTB-90120-75	90 / 4'	120 / 3'	75 / 29.5"
LTB-120150-65	120 / 4'	150 / 5'	65 / 25.5"
LTB-120150-75	120 / 4'	150 / 5'	75 / 29.5"
LTB-120180-65	120 / 4'	180 / 6'	65 / 25.5"
LTB-120180-75	120 / 4'	180 / 6'	75 / 29.5"



LTC

Active Isolator - LTC-series

Optical Tables

Stages

Optical Mounts

Components

Motion Systems

Education Systems

Users

Optics & Crystals

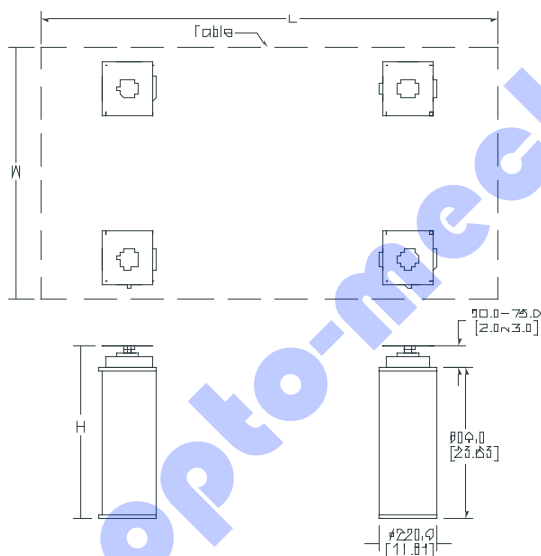
Other Equipment



Overview

- 3 different models and dimensions for selection
- Cylinder isolators
- Finish: Ivory or Black paint
- Self-leveling for constant height
- Vertical and horizontal vibration isolation
- QC reports, manual, and warranty included
- Any question that regarding the optical table weight, please contact us
- Metric / Imperial versions available
- To order Imperial model please add *I-* to item

Specification



Customized Design

ACCEPTED

Customized Designs
Welcomed by request

Item Numbers

- **W** = Width / **L** = Length / **H** = Support Height

- To order Imperial model please add *I-* to item number

Item Number	W (cm)	L (cm)	H (cm)
LTC4-55	90~150	90~300	55
LTC4-65	90~150	90~300	65
LTC4-75	90~150	90~300	75
LTC6-55	120~150	300~360	55
LTC6-65	120~150	300~360	65
LTC6-75	120~150	300~360	75



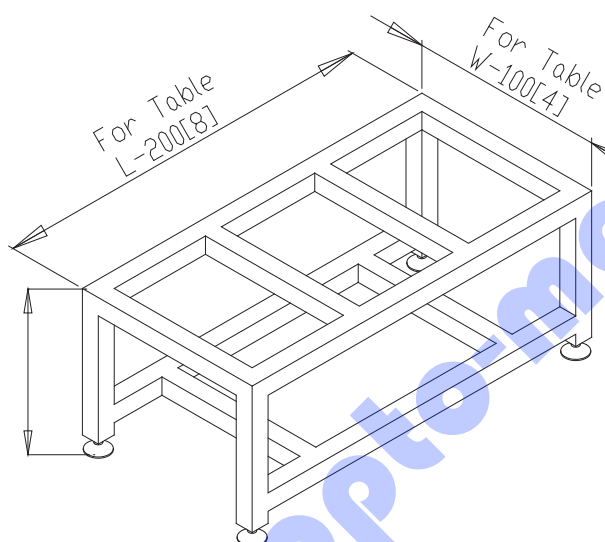
Fixed Supporting Frames - LTE-series



Overview

- 26 different models and dimensions for selection
- Any question that regarding the optical table weight, please contact us
- Finish: Ivory or Black paint
- Equipped with casters for easy transport
- QC reports, manual, and warranty included
- Customized specification is acceptable
- Metric / Imperial versions available
- To order Imperial model please add *I-* to item number

Specification



Customized Design

ACCEPTED

Customized Designs
Welcomed by request

Item Numbers

• **W** = Width / **L** = Length / **H** = Support Height

• To order Imperial model please add *I-* to item number

Item Number	W (cm / feet)	L (cm / feet)	H (cm / inch)
LTE-6075-65	60 / 2'	75 / 2.5'	65 / 25.6"
LTE-6075-75	60 / 2'	75 / 2.5'	75 / 29.5"
LTE-6090-65	60 / 2'	90 / 3'	65 / 25.6"
LTE-6090-75	60 / 2'	90 / 3'	75 / 29.5"
LTE-60120-65	60 / 2'	120 / 4'	65 / 25.6"
LTE-60120-75	60 / 2'	120 / 4'	75 / 29.5"
LTE-75100-65	75 / 2.5'	100 / 3.3'	65 / 25.6"
LTE-75100-75	75 / 2.5'	100 / 3.3'	75 / 29.5"
LTE-75120-65	75 / 2.5'	120 / 4'	65 / 25.6"
LTE-75120-75	75 / 2.5'	120 / 4'	75 / 29.5"

► More item numbers in the following page



- **W** = Width
- **L** = Length
- **H** = Support Height
- To order Imperial model please add *-I-* to item number

Item Number	W (cm / feet)	L (cm / feet)	H (cm / inch)
LTE-90120-65	90 / 3'	120 / 4'	65 / 25.6"
LTE-90120-75	90 / 3'	120 / 4'	75 / 29.5"
LTE-90150-65	90 / 3'	150 / 5'	65 / 25.6"
LTE-90150-75	90 / 3'	150 / 5'	75 / 29.5"
LTE-90180-65	90 / 3'	180 / 6'	65 / 25.6"
LTE-90180-75	90 / 3'	180 / 6'	75 / 29.5"
LTE-100200-65	100 / 3.3'	200 / 6.6'	65 / 25.6"
LTE-100200-75	100 / 3.3'	200 / 6.6'	75 / 29.5"
LTE-120180-55	120 / 4'	180 / 6'	55 / 21.6"
LTE-120180-65	120 / 4'	180 / 6'	65 / 25.6"
LTE-120240-55	120 / 4'	240 / 8'	55 / 21.6"
LTE-120240-65	120 / 4'	240 / 8'	65 / 25.6"
LTE-120300-55	120 / 4'	300 / 10'	55 / 21.6"
LTE-120300-65	120 / 4'	300 / 10'	65 / 25.6"
LTE-120360-55	120 / 4'	360 / 12'	55 / 21.6"
LTE-120360-65	120 / 4'	360 / 12'	65 / 25.6"

◀ More item numbers in the previous page

Non-Isolating Tables - OTE-series



Overview

- 37 different models and dimensions for selection
- A set of four active isolators (Square)
- The standard height is 85cm
- Any question that regarding the optical table weight, please contact us
- Use six supporting frame when table length is over 360cm
- Finish: Ivory or Black paint
- Equipped with casters for easy transport
- QC reports, manual, and warranty included
- Customized specification is acceptable
- Metric / Imperial versions available
- To order Imperial model please add *-I-* to item

Item Numbers

- **W** = Width / **L** = Length / **T** = Thickness / **H** = Support Height

Item Number	W (cm / feet)	L (cm / feet)	T (cm)	H (cm)
OTE-6075-05	60 / 2'	75 / 2.5'	5	80
OTE-6075-10	60 / 2'	75 / 2.5'	10	75
OTE-6090-05	60 / 2'	90 / 3'	5	80
OTE-6090-10	60 / 2'	90 / 3'	10	75
OTE-6090-20	60 / 2'	90 / 3'	20	65
OTE-60120-05	60 / 2'	120 / 4'	5	80
OTE-60120-10	60 / 2'	120 / 4'	10	75
OTE-60120-20	60 / 2'	120 / 4'	20	65
OTE-7590-05	75 / 2.5'	90 / 3'	5	80
OTE-7590-10	75 / 2.5'	90 / 3'	10	75
OTE-75120-05	75 / 2.5'	120 / 4'	5	80
OTE-75120-10	75 / 2.5'	120 / 4'	10	75
OTE-75120-20	75 / 2.5'	120 / 4'	20	65
OTE-90120-05	90 / 3'	120 / 4'	5	80
OTE-90120-10	90 / 3'	120 / 4'	10	75
OTE-90120-20	90 / 3'	120 / 4'	20	65
OTE-90150-05	90 / 3'	150 / 5'	5	80
OTE-90150-10	90 / 3'	150 / 5'	10	75
OTE-90150-20	90 / 3'	150 / 5'	20	65
OTE-90180-05	90 / 3'	180 / 6'	5	80
OTE-90180-10	90 / 3'	180 / 6'	10	75
OTE-90180-20	90 / 3'	180 / 6'	20	65
OTE-100200-10	100 / 3.3'	200 / 6.6'	10	75
OTE-100200-20	100 / 3.3'	200 / 6.6'	20	65
OTE-100200-30	100 / 3.3'	200 / 6.6'	30	55

► More item numbers in the following page



- **W** = Width
- **L** = Length
- **T** = Thickness
- **H** = Support Height
- To order Imperial model please add *-I-* to item number

Item Number	W (cm / feet)	L (cm / feet)	T (cm)	H (cm)
OTE-120120-10	120 / 4'	120 / 4'	10	75
OTE-120120-20	120 / 4'	120 / 4'	20	65
OTE-120120-30	120 / 4'	120 / 4'	30	55
OTE-120180-10	120 / 4'	180 / 6'	10	75
OTE-120180-20	120 / 4'	180 / 6'	20	65
OTE-120180-30	120 / 4'	180 / 6'	30	55
OTE-120240-20	120 / 4'	240 / 8'	20	65
OTE-120240-30	120 / 4'	240 / 8'	30	55
OTE-120300-20	120 / 4'	300 / 10'	20	65
OTE-120300-30	120 / 4'	300 / 10'	30	55
OTE-120360-20	120 / 4'	360 / 12'	20	65
OTE-120360-30	120 / 4'	360 / 12'	30	55

◀ More item numbers in the previous page

Workstation - AOT-series



Overview

- 2 different models and dimensions for selection
- A set of four active isolators (square)
- Table Thickness: 2.5 cm, 5 cm
- Finish : Ivory paint
- Honeycomb design
- Equipped with casters for easy movement
- Storage cabinet
- Metric / Imperial versions available
- To order Imperial model please add *I-* to item

Specification

Customized Design

ACCEPTED

Customized Designs
Welcomed by request

The AOT-series active optical table features a set of four active isolators and able to take weight for up to 150 kg. The tabletop features 2 kinds of working surfaces, one with BRS Honeycomb breadboard for conducting lab application and another half with plain surface for research preparation or placing equipment. Featuring large storage cabinet for storing lab equipment. This completed work station system is an ideal solution for general photonic applications in a typical lab environment.



- ① Surface with BRS honeycomb breadboard for conducting lab application
- ② Large working surface which can be used for placing computers or research equipment
- ③ Large storage cabinet for storing lab equipment

Item Numbers

- To order Imperial model please add *I-* to item number

Item Number	Workstation Size (cm)	Platform Size (cm)	Thickness (cm)
AOT-7014	70 x 140 x 75	65 x 65	5
AOT-7515	75 x 150 x 85	70 x 70	5



BOT

Vibration Isolated Tabletop

Optical Tables

Stages

Optical Mounts

Components

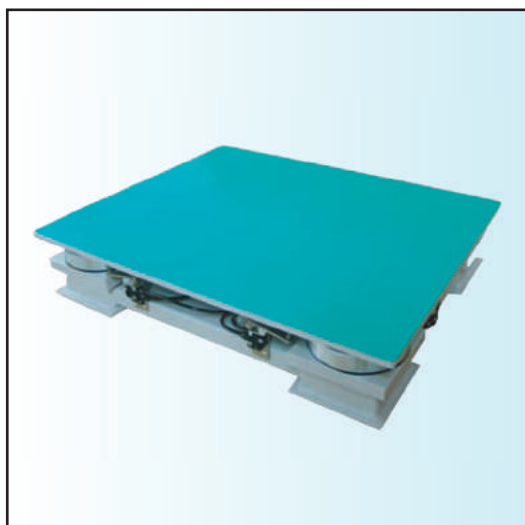
Motion Systems

Education Systems

Lenses

Optics & Crystals

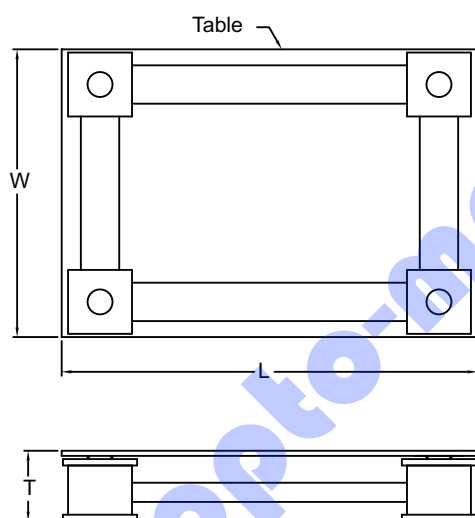
Other Equipment



Overview

- Tabletop with 4 pistons
- 9 different models and dimensions for selection
- Weight: 27 ~ 152 kg
- Load: 500 kg up
- Self-leveling for constant height
- Suitable for conducting microscope applications
- Automatic adjustment function of the desktop level
- Vertical and horizontal vibration isolation
- Metric / Imperial versions available
- To order Imperial model please add *-I-* to item

Specification



Customized Design

ACCEPTED

Customized Designs
Welcomed by request

Item Numbers

- **W** = Width / **L** = Length / **T** = Thickness
- To order Imperial model please add *-I-* to item number

Item Number	W (cm / inch)	L (cm / inch)	T (cm / inch)
BOT-3045-13	30 / 12"	45 / 18"	13 / 0.5"
BOT-3060-13	30 / 12"	60 / 24"	13 / 0.5"
BOT-4560-13	45 / 18"	60 / 24"	13 / 0.5"
BOT-4575-13	45 / 18"	75 / 30"	13 / 0.5"
BOT-6075-13	60 / 24"	75 / 30"	13 / 0.5"
BOT-6090-13	60 / 24"	90 / 36"	13 / 0.5"
BOT-7590-16	75 / 30"	90 / 36"	16 / 0.63"
BOT-75120-16	75 / 30"	120 / 48"	16 / 0.63"
BOT-90120-16	90 / 36"	120 / 48"	16 / 0.63"



Active Optical Tables - OTA-series


BEST

Overview

- 18 different models and dimensions for selection
- A set of four active isolators (square)
- Load: 204~640 kg
- The standard height is 85cm
- Any question that regarding the optical table weight, please contact us
- Finish : Ivory or Black paint
- Honeycomb design
- Steady flow chamber shock isolation system
- Equipped with casters for easy transport
- QC reports, manual, and warranty included
- Customized specification is acceptable
- Metric / Imperial versions available
- To order Imperial model please add *-I-* to item

Item Numbers

• **W** = Width / **L** = Length / **T** = Thickness / **H** = Support Height

• To order Imperial model please add *-I-* to item number

Item Number	W (cm / feet)	L (cm / feet)	T (cm)	H (cm)
OTA-100200-30	100 / 3.3'	200 / 6.6'	30	55
OTA-100200-20	100 / 3.3'	200 / 6.6'	20	65
OTA-100200-10	100 / 3.3'	200 / 6.6'	10	75
OTA-120120-30	120 / 4'	120 / 4'	30	55
OTA-120120-20	120 / 4'	120 / 4'	20	65
OTA-120120-10	120 / 4'	120 / 4'	10	75
OTA-120180-30	120 / 4'	180 / 6'	30	55
OTA-120180-20	120 / 4'	180 / 6'	20	65
OTA-120180-10	120 / 4'	180 / 6'	10	75
OTA-120240-30	120 / 4'	240 / 8'	30	55
OTA-120240-20	120 / 4'	240 / 8'	20	65
OTA-120240-10	120 / 4'	240 / 8'	10	75
OTA-120300-30	120 / 4'	300 / 10'	30	55
OTA-120300-20	120 / 4'	300 / 10'	20	65
OTA-120300-10	120 / 4'	300 / 10'	10	75
OTA-120360-30	120 / 4'	360 / 12'	30	55
OTA-120360-20	120 / 4'	360 / 12'	20	65
OTA-120360-10	120 / 4'	360 / 12'	10	75



OTB

Active Optical Tables - OTB-series

Optical Tables

Stages

Optical Mounts

Components

Motion Systems

Education Systems

Lasers

Optics & Crystals

Other Equipment



Overview

- 13 different models and dimensions for selection
- A set of four active isolators (square)
- The standard height is 85cm
- Any question that regarding the optical table weight, please contact us
- Finish : Ivory or Black paint
- Honeycomb design
- Steady flow chamber shock isolation system
- Equipped with casters for easy transport
- QC reports, manual, and warranty included
- Customized specification is acceptable
- Metric / Imperial versions available
- To order Imperial model please add *-I-* to item

Item Numbers

- **W** = Width
- **L** = Length
- **T** = Thickness
- **H** = Support Height
- To order Imperial model please add *-I-* to item number

Item Number	W (cm / feet)	L (cm / feet)	T (cm)	H (cm)
OTB-7590-10	75 / 2.5'	90 / 3'	10	75
OTB-75120-10	75 / 4'	120 / 4'	10	75
OTB-75120-20	75 / 4'	120 / 4'	20	65
OTB-90120-10	90 / 3'	120 / 4'	10	75
OTB-90120-20	90 / 3'	120 / 4'	20	65
OTB-90150-10	90 / 3'	150 / 5'	10	75
OTB-90150-20	90 / 3'	150 / 5'	20	65
OTB-90180-10	90 / 3'	180 / 6'	10	75
OTB-90180-20	90 / 3'	180 / 6'	20	65
OTB-100200-10	100 / 3.3'	200 / 6.6'	10	75
OTB-100200-20	100 / 3.3'	200 / 6.6'	20	65
OTB-120120-10	120 / 4'	120 / 4'	10	75
OTB-120120-20	120 / 4'	120 / 4'	20	65



Active Optical Tables - OTC-series



Overview

- 21 different models and dimensions for selection
- A set of four active isolators (Cylinder)
- Load: 204~640 kg
- The standard height is 85cm
- Any question that regarding the optical table weight, please contact us
- Finish : Ivory or Black paint
- Honeycomb design
- Steady flow chamber shock isolation system
- Equipped with casters for easy transport
- QC reports, manual, and warranty included
- Customized specification is acceptable
- Metric / Imperial versions available
- To order Imperial model please add *-I-* to item

Item Numbers

• **W** = Width / **L** = Length / **T** = Thickness / **H** = Support Height

• To order Imperial model please add *-I-* to item number

Item Number	W (cm / feet)	L (cm / feet)	T (cm)	H (cm)
OTC-100200-10	100 / 3.3'	200 / 6.6'	10	75
OTC-100200-20	100 / 3.3'	200 / 6.6'	20	65
OTC-100200-30	100 / 3.3'	200 / 6.6'	30	55
OTC-120120-10	120 / 4'	120 / 4'	10	75
OTC-120120-20	120 / 4'	120 / 4'	20	65
OTC-120120-30	120 / 4'	120 / 4'	30	55
OTC-120150-10	120 / 4'	150 / 5'	10	75
OTC-120150-20	120 / 4'	150 / 5'	20	65
OTC-120150-30	120 / 4'	150 / 5'	30	55
OTC-120180-10	120 / 4'	180 / 6'	10	75
OTC-120180-20	120 / 4'	180 / 6'	20	65
OTC-120180-30	120 / 4'	180 / 6'	30	55
OTC-120240-10	120 / 4'	240 / 8'	10	75
OTC-120240-20	120 / 4'	240 / 8'	20	65
OTC-120240-30	120 / 4'	240 / 8'	30	55
OTC-120300-10	120 / 4'	300 / 10'	10	75
OTC-120300-20	120 / 4'	300 / 10'	20	65
OTC-120300-30	120 / 4'	300 / 10'	30	55
OTC-120360-10	120 / 4'	360 / 12'	10	75
OTC-120360-20	120 / 4'	360 / 12'	20	65
OTC-120360-30	120 / 4'	360 / 12'	30	55



AIR

Air Compressor

Optical Tables

Stages

Optical Mounts

Components

Motion Systems

Education Systems

Lasers

Optics & Crystals

Other Equipment



.....SIL-AIR 30 TC.....

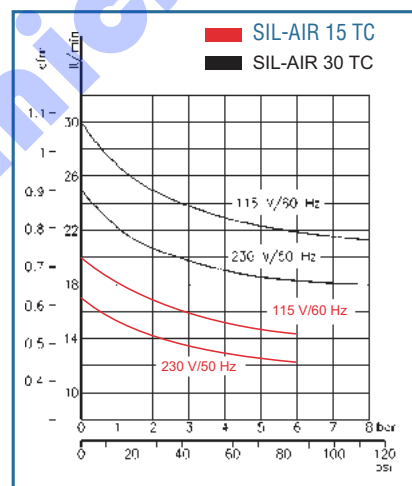


overview

Tipo Type	Volt/Hz	l/min (CFM) *	l (Gal)	Watt	dBA	Kg (Lbs)	Kg (Lbs)
15TC	230/50 115/60	12.5 (0.45) 14.8 (0.53)	3.5 (0.92)	135 159	30	16 (35)	17 (37)
30TC	230/50 115/60	18.5 (0.65) 22.5 (0.8)	3.5 (0.92)	200 240	40	18 (39)	19 (42)

* = @ 5bar (70 PSI)

	A mm	B mm	C mm
	280	350	340
	300	380	370



Oil-free Air Compressor
FB-36/7

overview

- Item No : FB-36/7
- Power: 550W
- Pressure: 0.7 Mpa
- Speed: 1380r/min
- Max Pressure: 8KG
- Noise: 58dB / 1m
- Air Storage capacity: 4 litre
- Air Compress Capacity: 102 litre/ Min
- Dimension: 46X17X49cm
- Weight: 21kg



Instrument Shelf + Dark Room



OTH-series
Instrument Shelf



OTHR-series
Dark Room

Item Numbers

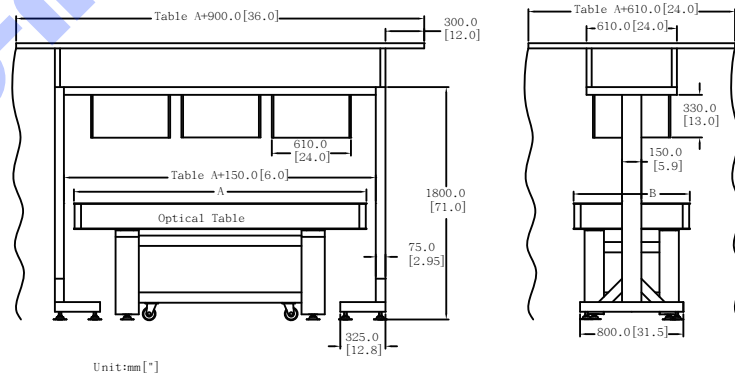
Customized Design

ACCEPTED

Customized Designs
Welcomed by request

- Double layers design for easy instrument placement.
- Shelf supports with caster design for easy movement.
- Darkroom cover made of anti—high temperature material.

Op Mount offers instrument shelves with various dimensions to meet customer's needs.
Additional black curtain for dark room application is available.
Customers are welcome to provide their own required table dimension for customized design.



Specification

- To order Imperial model please add *-I-* to item number

Shelf Item Number	A (cm / feet)	Middle Shelf	Weight (kg)	Darkroom Item Number
OTH-4	120 (4')	1	95	OTHR-4
OTH-5	150 (5')	1	110	OTHR-5
OTH-6	180 (6')	2	115	OTHR-6
OTH-6.6	200 (6.6')	2	120	OTHR-6.6
OTH- 8	240 (8')	2	140	OTHR- 8
OTH-10	300 (10')	3	160	OTHR-10