

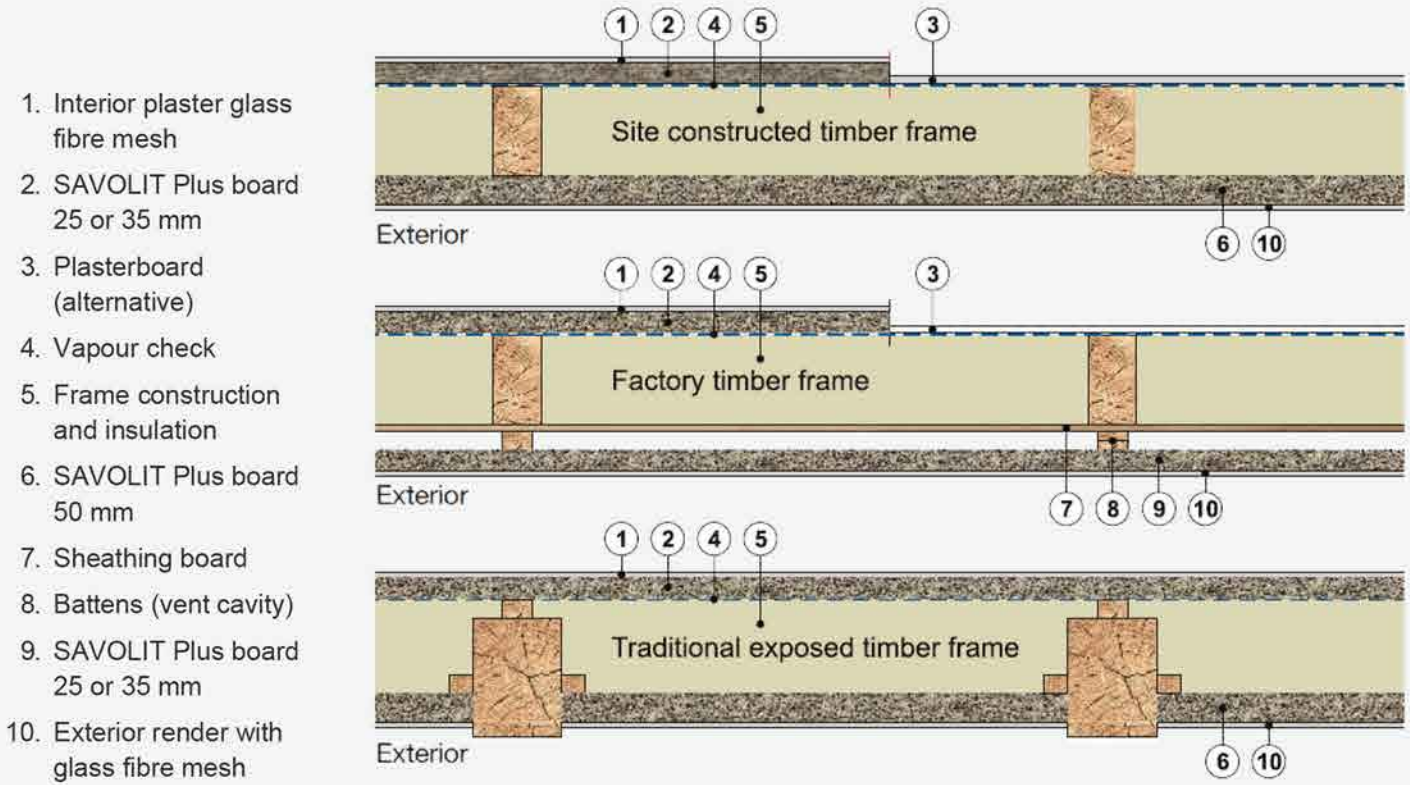
Property	Designation	Units	Data					Standard
Board thickness	d	(mm)	15	25	35	50	75	
Board length	l	(mm)	2400 2000 1200	2400 2000 1200	2400 2000	2400 2000	2000	
Board width	b	(mm)	600					
Average Specific Mass		(Kg/m <sup>2</sup> )	8	11.5	14	18	26	
Declared thermal resistance	R <sub>D</sub>	(m <sup>2</sup> K/W)	0.20	0.35	0.50	0.75	1.15	UNI EN 13168
Declared thermal conductivity	λ <sub>D</sub>	(W/mK)	0.066					
Bending strength	σ <sub>b</sub>	(kPa)	1650	2000	1450	1000	650	EN 12089, A
Compressive strength at 10% deformation	σ <sub>10</sub>	(kPa)	≥ 200			≥ 150	≥ 150	UNI EN 826
Water vapour diffusion resistance factor		(-)	5					UNI EN 12086
Fire reaction			Euroclass B - s1, d0					UNI EN 13501-1
Thickness tolerance		(mm)	+3, -2					UNI EN 823
Width tolerance		(mm)	± 3					UNI EN 822
Orthogonality		(mm/m)	≥ 2					UNI EN 824
Specific heat		kJ/kgK	1.81					
Shear stress resistance		N/mm <sup>2</sup>	0.28					
Capacity for thermal accumulation		kJm <sup>3</sup> K	965-628					
Capacity for absorption of room humidity		l/m <sup>2</sup>	2 - 3.5					
Resistance to water and frost		l/m <sup>2</sup>	No alteration and maintenance of bending resistance after 20 cycles of frosting and defrosting in water					

Dimension tolerances: Slight differences from format cannot be excluded due to the organic nature of wood.

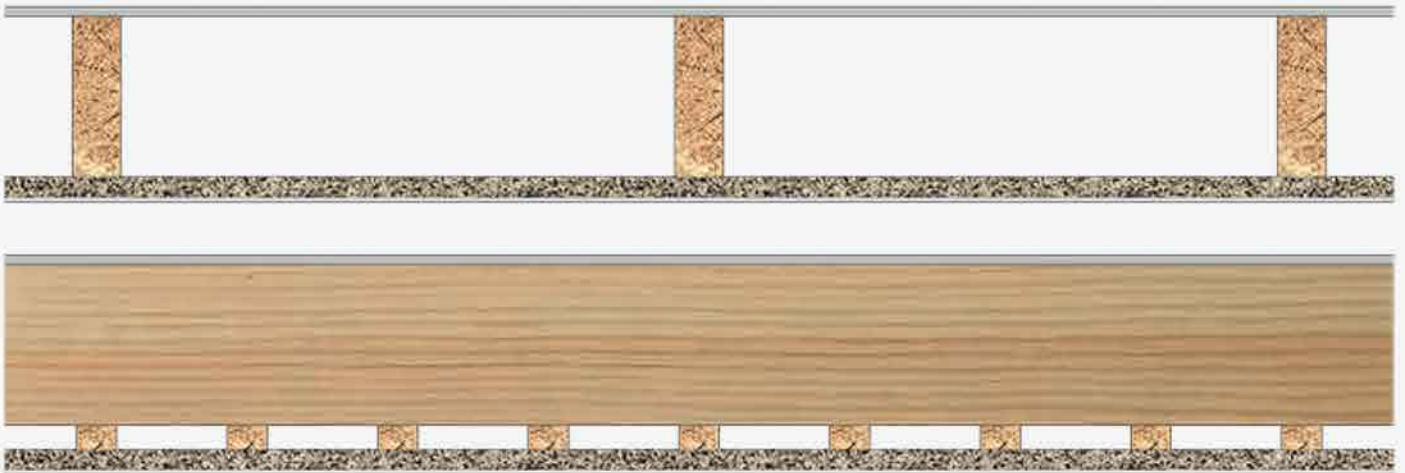
Tolerances according to EN 13168

# Design

## Frame Wall & Ceiling Constructions



## Interior wall and ceiling applications

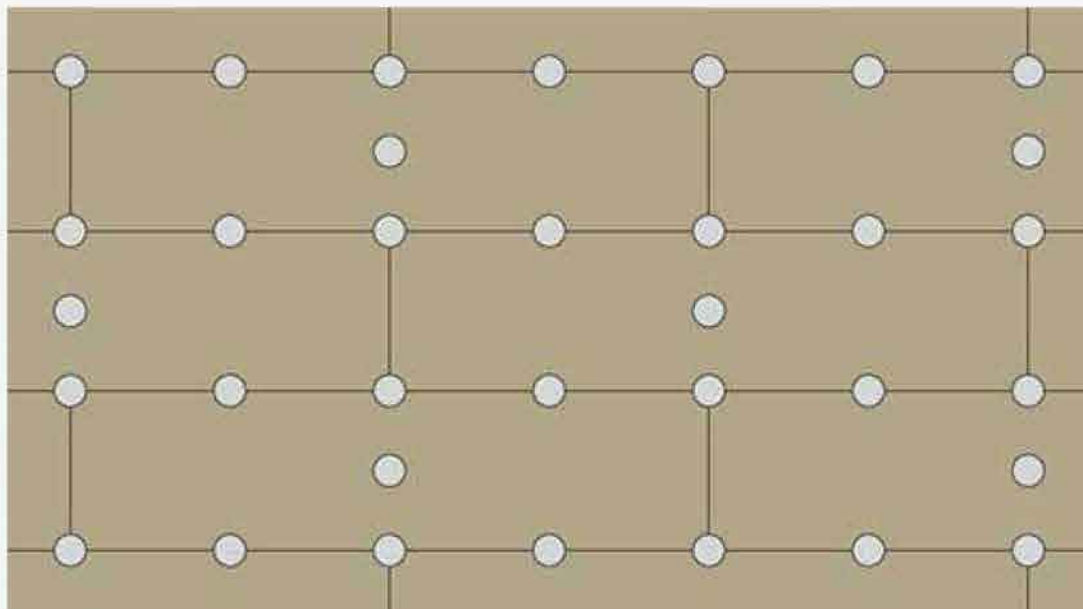


SAVOLIT Plus 25 mm either direct fixed to joists (studs) or via supporting battens. Lime or gypsum plaster with glass fibre mesh.

# Installation

## Installation

SAVOLIT Plus wood wool boards are installed in a broken bond pattern and fastened to timber structures with timber screws and Savolit washers positioned as shown in the following diagrams.



Mechanically fixed with screws and savolit washers

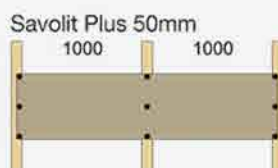
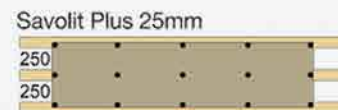
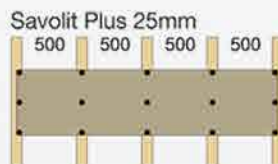
Board		screw (length, diameter)
15mm	-	min. 45mm, Ø4
25mm	-	min. 50mm, Ø4
35mm	-	min. 70mm, Ø5
50mm	-	min. 90mm, Ø5

### Minimum Fixings per m<sup>2</sup>

25mm board - 15 min. Screws / m <sup>2</sup>
35mm board - 12 min. Screws / m <sup>2</sup>
50mm board - 9 min. Screws / m <sup>2</sup>

Savolit Plus boards may also be fixed without centre fixing with the following minimum fixings per board:

	2000 x 600mm	1200 x 600mm
25mm board - 14 screws /board	10 screws/board	
35mm board - 14 screws /board	8 screws/board	
50mm board - 10 screws /board	6 screws/board	



# Edge Bonding

## Edge Bonding

If boards are fully edge bonded one to another it is not then necessary for board ends to occur at supports and allowing increased spans as follows:

Board thickness 25mm  
Maximum span 666mm

Board thickness 35, 50mm  
Maximum span 1000 mm

SAVOLIT boards 25, 35 and 50mm thick are fully edge bonded with a bead of Savolit C84 adhesive.

