

Product instruction manual

Magnum® MEC21 Binding System

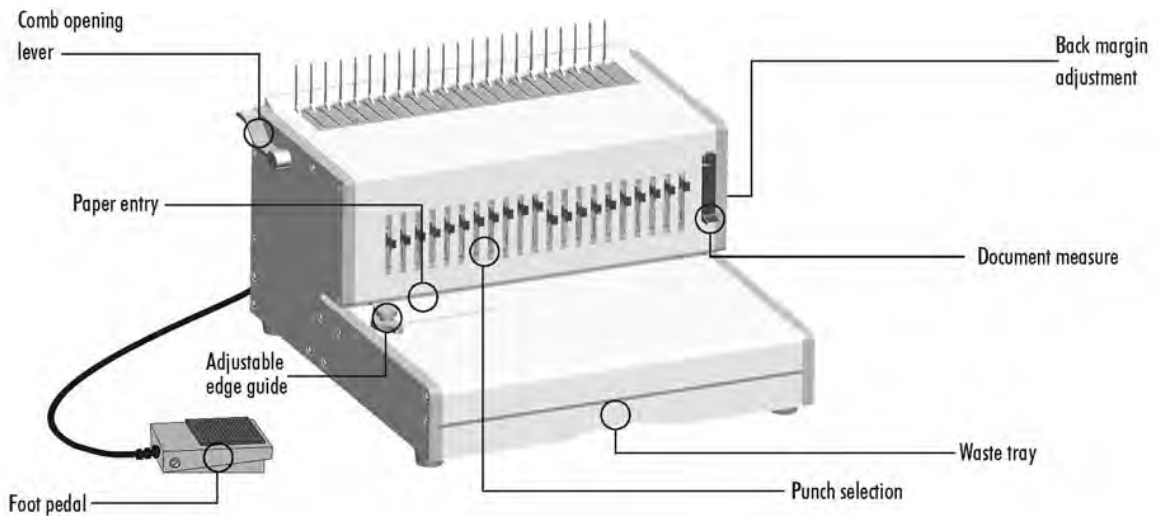
MAGNUM®



Magnum MEC21 has been designed to be user friendly, however we strongly recommend you take a few minutes to read through this manual to ensure correct operation.

Keep this manual safe for future reference.

ENGLISH



CAPABILITIES

Punching Capacity

Paper sheets	
70 - 80g / 20lb	30 sheet
Transparent covers	
100-200 micron / 4 - 8 mil.	4 sheet
200 + micron / 8+ mil.	3 sheet
Other standard covers	
160-270g / 40 - 60lb	4 sheet
270 + g / 60 + lb	3 sheet
Binding Capacity	
Max binding comb size	51 mm
Max document (80g / 20lb)	approx. 500 sheets

Technical Data

Paper dimensions	A4, A5, US letter, US cover
Punching slots	21
Releasable dies	21 dies (1 - 21)
Adjustable back margin	5 positions - (2.5 - 6.5mm)
Slot pitch	14.28 mm / 9/16"
Adjustable edge guide	Yes
Waste tray capacity	approx. 1800 sheets
Net weight	17 kg / 37lb
Dimensions (WxDxH)	40 x 40 x 25 cm
Voltage	220-240V 50/60Hz
Motor wattage	160W 1.0A

IMPORTANT SAFETY INSTRUCTIONS - KEEP FOR FUTURE USE

When punching;

- always ensure the machine is on a stable surface
- test punch scrap sheets and set the machine before punching final documents
- remove staples and other metal articles prior to punching
- never exceed the machines quoted performance

Keep the machine away from heat and water sources.

Never attempt to open or otherwise repair the machine.




When binding;

- Keep the machine away from heat and water sources.
- Never attempt to open or otherwise repair the machine.
- Plug the machine into an easily accessible socket.
- Note — this machine has a thermal cut-out device which activates when the machine is overheated during use. It will automatically reset when the machine is safe to operate.

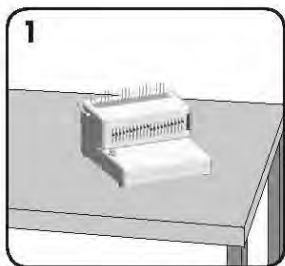
COMB DIAMETER & DOCUMENT SIZES

Comb diameter sizes

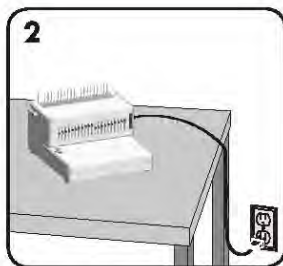
To select the correct size comb diameter for a document use the document measure card as printed on the machine.

					
A	2-20	6mm	1/4"	2.5mm	7/64"
B	21-40	8mm	5/16"		
C	41-55	10mm	3/8"		
D	56-65	12mm	1/2"	3.5mm	9/64"
E	66-100	14mm	9/16"		
F	101-115	16mm	5/8"		
G	116-135	19mm	3/4"	4.5mm	11/64"
H	136-180	22mm	7/8"		
I	181-210	25mm	1"		
J	211-240	28mm	1 1/8"	5.5mm	14/64"
K	241-280	32mm	1 1/4"		
L	281-310	35mm	1 3/8"		
M	311-340	38mm	1 1/2"	6.5mm	16/64"
N	341-410	45mm	1 3/4"		
O	411-500	51mm	2"		
Max capacity :		Paper x30 sheets (80gsm / 20lb)			
		PVC x4 sheets (200mic / 8mil)			

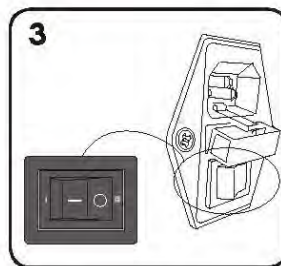
SET UP



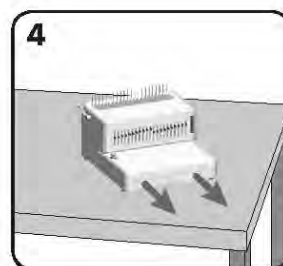
1 Ensure the machine is on a stable surface.



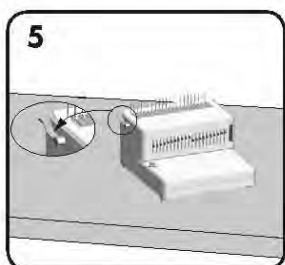
2 Plug the machine into an easily accessible mains socket.



3 Switch the power on (located at the rear of the machine).



4 Check the waste tray is empty and correctly fitted.



5 Ensure the comb opening lever is pushed backwards.

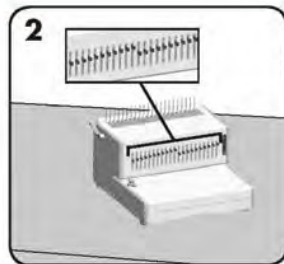
BEFORE YOU BIND

1

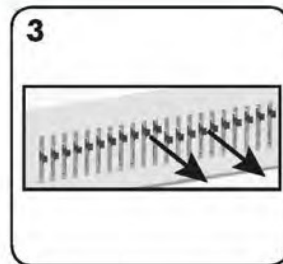
A	2-20	8mm	14"	
B	21-40	8mm	20"	2.5mm 7/8"
C	41-60	12mm	30"	
D	61-80	12mm	40"	3.5mm 9/16"
E	81-100	12mm	50"	
F	101-110	15mm	58"	
G	111-120	15mm	68"	4.0mm 11/16"
H	121-130	25mm	72"	
I	131-140	25mm	82"	1"
J	141-150	25mm	92"	
K	151-160	35mm	102"	8.0mm 14/16"
L	161-170	35mm	112"	
M	171-180	45mm	122"	1.5"
N	181-190	45mm	132"	8.5mm 16/16"
O	191-200	61mm	2"	

Max capacity: Paper x30 sheets (80gsm / 20lb)
PVC x4 sheets (200mic / 8m)

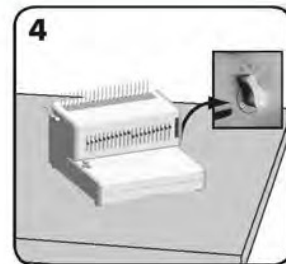
Select the correct comb diameter using the document measure.



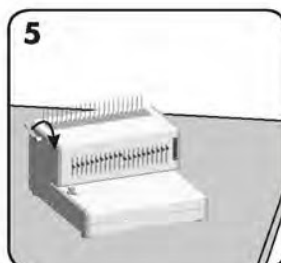
Select the correct punch profile for the sheet size. Select releasable dies as appropriate.



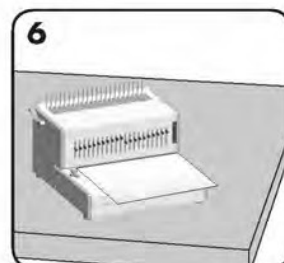
To cancel a punch, pull the pin forward. Test punch a sheet.



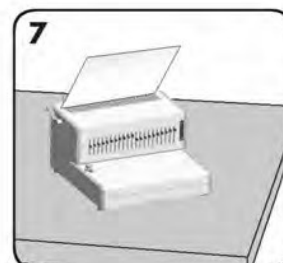
Select the correct back margin depth for the number of sheets.



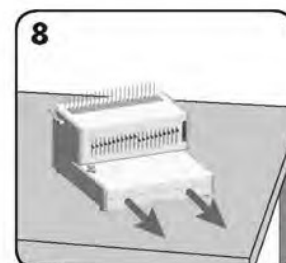
Insert the plastic comb into the opening mechanism. Pull comb-opening lever forward to open the comb.



Test punch scrap sheets to check edge guide setting.

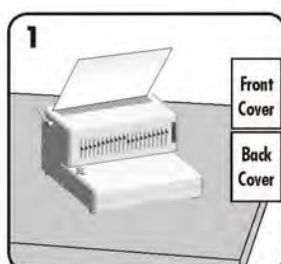


Load punched sheets directly onto the open comb.

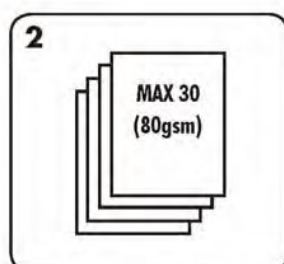


Empty waste tray regularly - ideally after each use.

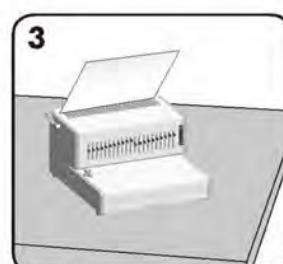
BINDING A DOCUMENT



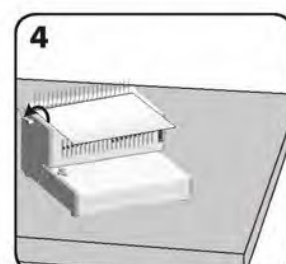
Punch front and back covers first.



Punch sheets in small batches that do not overload the machine or the user.



Load punched sheets directly onto the opened comb. Starting with the front of the document.



When all punched sheets are loaded onto the comb, push the comb lever backwards to close the comb and remove the bound document.

CORRECTING A BOUND DOCUMENT

Additional sheets may be added or removed at any time by opening and then closing the comb as previously described.

REMOVAL OF WASTE CLIPPINGS

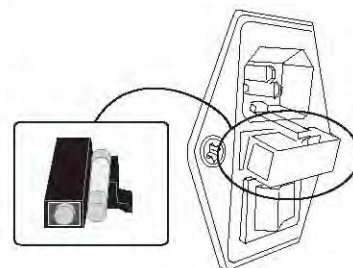
The tray should be emptied after every 50 operations to ensure no blockages occur.

TROUBLESHOOTING

This machine is fitted with a fuse, located between the mains switch and mains socket on the rear of the machine. To replace the fuse;

- Isolate the machine from the mains supply.
- Open the fuse holder with a screwdriver blade.
The holder contains two fuses, the loose fuse is a spare.
- Insert a new fuse in the holder and replace the holder in to the machine.

NOTE: Always use the recommended fuse (120W / 2A) and DO NOT replace it with one of a different rating.



Problem	Cause	Solution
No power	Machine is not switched on	Switch on machine at rear next to plug inlet and at the socket
Not punching	Thermal cut-out switch has activated	Allow machine to cool down for 30-60 minutes.
Punched holes are not central	Edge guide not set	Adjust edge guide until hole pattern is correct
Machine will not punch	Blockage	Check waste tray is empty. Check for blockage to paper entry
Punch holes are not parallel to edge	Debris is stuck below dies	Take stiff cardboard and slide into the paper entry. Move the cardboard sideways to release any stray clippings into the waste tray
Partial holes	Sheets not correctly aligned to punch pattern	Adjust edge guide and test punch scrap sheets until correct
Missing holes	Selectable dies are not selected to punch	Check the current dies are selected to punch holes. To select a die, push selector switch down at the front
Damaged hole edges	Possibly overloading the machine	Punch plastic covers with paper sheets. Reduce number of sheets being punched

Warranty & Incorrect Use

IMPORTANT INFORMATION

Your Magnum Binding System should reach you in perfect condition, however please retain all of the original packaging once you have unpacked your Binding System in case you need to return it for repair. If your system arrives damaged or faulty in anyway, this must be reported to your supplier immediately. If the Binding System is sent back for repair under warranty and is damaged in transit due to faulty packaging your warranty may be void.

The Binding System you have purchased includes a 1 year warranty on defective parts and general wear and tear, it does not cover any damage to the punch blades through misuse or operator error due to incorrect substrates being punched.

E&O.E

