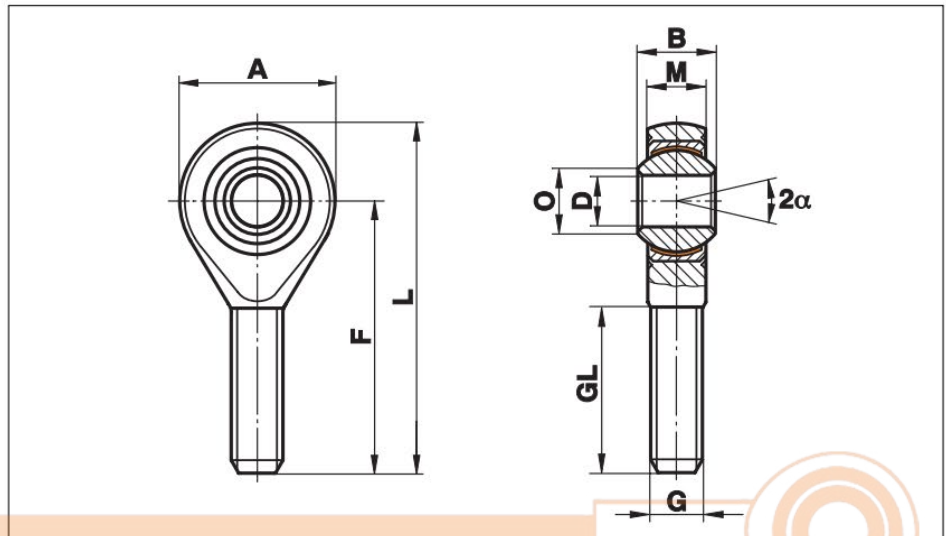


Rod Ends Series K - Maintenance Free

Series GASW

Rod End with male thread and PTFE liner

For use at dynamic loads



| Size (D H7) | B | M | A | F | L | O | G | GL | Static load C ₀ kN | Dynamic load C kN | Limiting speed rev/min | Maximum Pivoting Angle α (°) | Weight g |
|-------------|----|-------|-----|-----|-----|------|----------|-----|-------------------------------|-------------------|------------------------|------------------------------|----------|
| 5 | 8 | 6,00 | 18 | 33 | 42 | 7,7 | M 5 | 19 | 4,3 | 7,5 | 600 | 13 | 13 |
| 6 | 9 | 6,75 | 20 | 36 | 46 | 8,9 | M 6 | 21 | 6,0 | 9,3 | 530 | 13 | 20 |
| 8 | 12 | 9,00 | 24 | 42 | 54 | 10,4 | M 8 | 25 | 11,0 | 16,7 | 420 | 14 | 33 |
| 10 | 14 | 10,50 | 28 | 48 | 62 | 12,9 | M 10 | 28 | 17,4 | 23,4 | 350 | 13 | 56 |
| 12 | 16 | 12,00 | 32 | 54 | 70 | 15,4 | M 12 | 32 | 23,5 | 32,0 | 300 | 13 | 87 |
| 14 | 19 | 13,50 | 36 | 60 | 78 | 16,8 | M 14 | 38 | 21,0 | 42,0 | 260 | 16 | 129 |
| 16 | 21 | 15,00 | 42 | 66 | 87 | 19,3 | M 16 | 40 | 32,0 | 52,5 | 230 | 15 | 189 |
| 18 | 23 | 16,50 | 46 | 72 | 95 | 21,8 | M 18x1,5 | 44 | 38,5 | 64,0 | 210 | 15 | 267 |
| 20 | 25 | 18,00 | 50 | 78 | 103 | 24,3 | M 20x1,5 | 47 | 44,0 | 78,0 | 190 | 14 | 348 |
| 22 | 28 | 20,00 | 54 | 84 | 111 | 25,8 | M 22x1,5 | 51 | 53,0 | 97,0 | 170 | 15 | 443 |
| 25 | 31 | 22,00 | 60 | 94 | 124 | 29,6 | M 24x2 | 57 | 61,0 | 122,0 | 150 | 15 | 600 |
| 30 | 37 | 25,00 | 70 | 110 | 145 | 34,8 | M 30x2 | 71 | 82,0 | 168,0 | 130 | 17 | 1030 |
| 35 | 43 | 28,00 | 80 | 125 | 165 | 37,7 | M 36x2 | 73 | 101,0 | 206,0 | 110 | 19 | 1600 |
| 40 | 49 | 35,00 | 90 | 142 | 187 | 44,2 | M 42x2 | 78 | 124,0 | 286,0 | 100 | 16 | 2570 |
| 50 | 60 | 45,00 | 116 | 185 | 243 | 55,9 | M 48x2 | 105 | 308,0 | 485,0 | 80 | 14 | 4800 |



Materials:

Housing: up to size 12 turned, from free-cutting steel to 9SMnPb28K, 12L13, galvanised
from size 14 forged, from heat-treated galvanised steel to C22, M1023
size 50 turned from heat-treated galvanised steel to C45, Aisi 1045

Insert: Free-cutting steel to 9SMnPb28K, 12L13, with PTFE liner bonded to the inner surface

Ball: Bearing steel to 100Cr6, Aisi 52100, hardened, ground, polished

This series is also available sealed (see page 52) or with threaded bolt (see page 53).

⚠ Please note: The dynamic load "C" of the bearing of some rod ends is in some sizes higher than the static load "C₀" of the rod end.