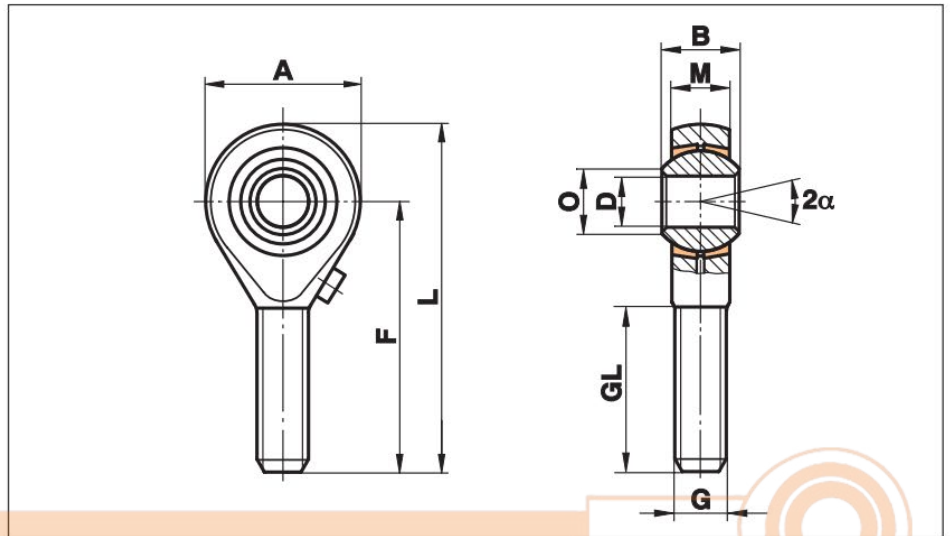


Rod Ends Series K - Standard

Series GA

Rod End with male thread regreasable through grease nipple in the housing

Especially suited for axial loads



Size (D H7)	B	M	A	F	L	O	G	GL	Static load C ₀ kN	Dynamic load C kN	Limiting speed rev/min	Maximum Pivoting Angle α (°)	Weight g
5 ¹⁾	8	6,00	18	33	42	7,7	M 5	19	4,3	2,5	900	13	13
6	9	6,75	20	36	46	8,9	M 6	21	6,0	3,2	760	13	20
8	12	9,00	24	42	54	10,4	M 8	25	11,0	5,4	620	14	33
10	14	10,50	28	48	62	12,9	M 10	28	17,4	7,5	500	13	56
12	16	12,00	32	54	70	15,4	M 12	32	25,5	10,0	450	13	87
14	19	13,50	36	60	78	16,8	M 14	36	24,5	13,0	360	16	129
16	21	15,00	42	66	87	19,3	M 16	40	36,5	16,0	350	15	189
18	23	16,50	46	72	95	21,8	M 18x1,5	44	43,0	19,5	320	15	267
20	25	18,00	50	78	103	24,3	M 20x1,5	47	49,5	23,5	280	14	348
22	28	20,00	54	84	111	25,8	M 22x1,5	51	57,0	29,0	250	15	443
25	31	22,00	60	94	124	29,6	M 24x2	57	68,0	35,0	230	15	600

Materials:

Housing: up to size 12 turned from free-cutting steel to 9SMnPb28K galvanised, from size 14 forged from heat-treated steel C22, M1023 galvanised

Insert: Special brass to CuZn38Al1

Ball: Bearing steel to 100Cr6, Aisi 52100, hardened, ground, polished

¹⁾ without lubrication hole