

## Easy-Verge U Dry Verge System Installation

# easy-trim Verge U

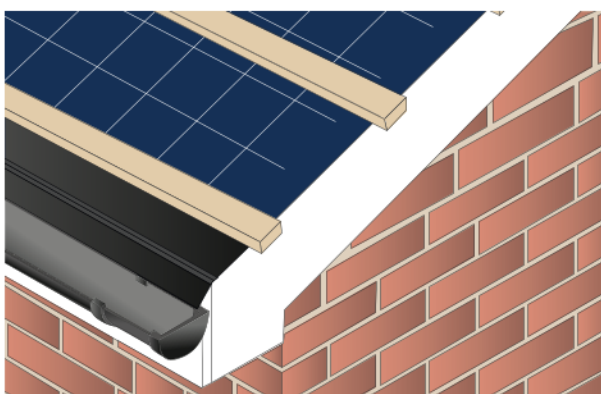
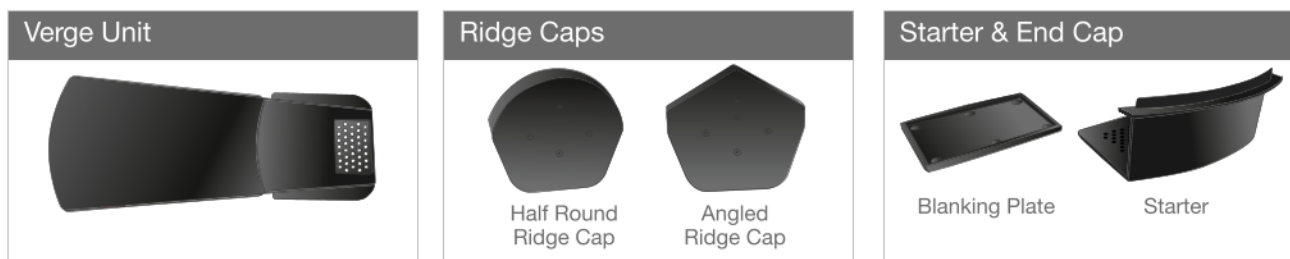
### Description & Use

The Ultimate universal, high speed, high quality easy install dry verge. Left and right handed units are no longer required as Easy Verge U is truly universal. The unique design is quick and easy to install on most tiles and has exceptional holding qualities. A tight secure fit is easily achieved ensuring roof tiles are held firmly in place and not vulnerable to wind dislodgement.

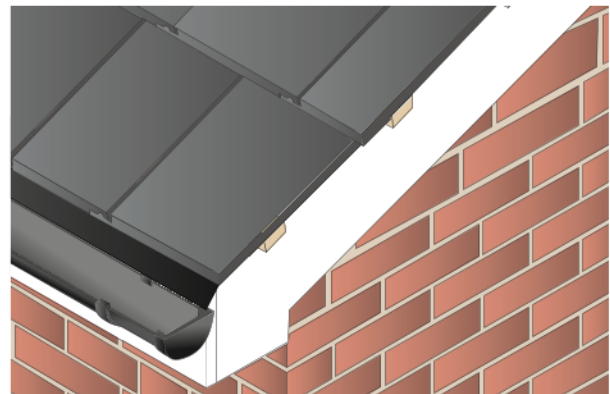
### Benefits

- Universal handed units, suits both sides of the roof
- Tight secure fix, not vulnerable to wind dislodgement
- Flexible polypropylene material allows for rapid installation
- Can be installed in any weather condition
- Weather resistant and UV Stable

### Installation



1 Install the tiling battens with a 30mm overhang, over the brick or barge board. Remove existing mortar bedding in refurbishment projects and install new tiling batten to the underside of the existing tiling batten.



2 Lay tiles set flush with the battens. Remove existing mortar bedding in refurbishment project and install new tiling batten to the underside of the existing tiling batten.

Tel: +44 (0) 845 034 6008

e: enquiries@easy-trim.co.uk

f: +44 (0) 845 034 6010

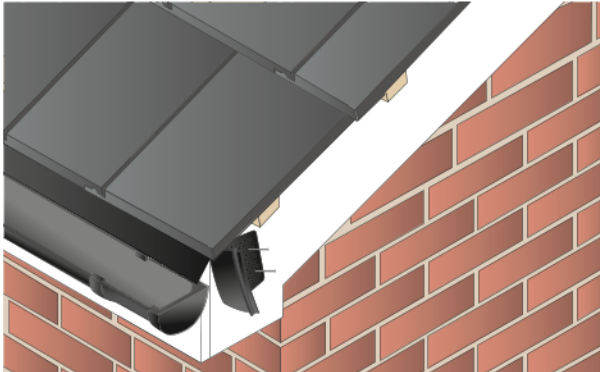
Unit 12B Metcalf Drive  
Altham Industrial Estate | Altham  
Lancashire | BB5 5TU | England  
w: www.easy-trim.co.uk

find us:

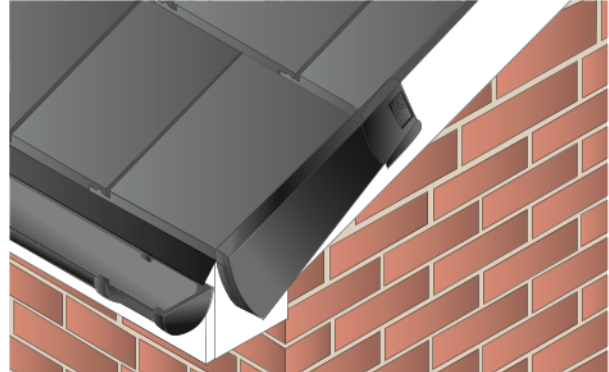


## Easy-Verge U Dry Verge System Installation

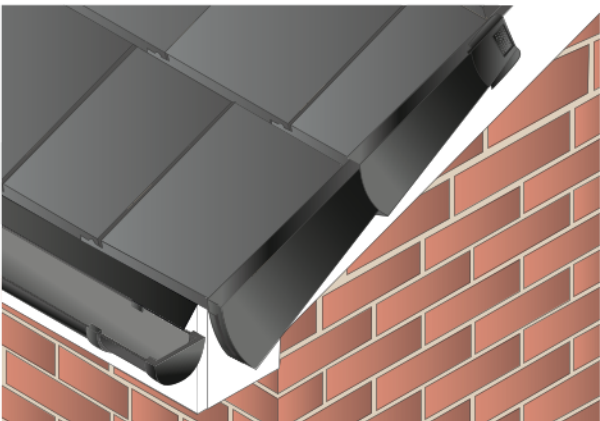
### Installation - Continued



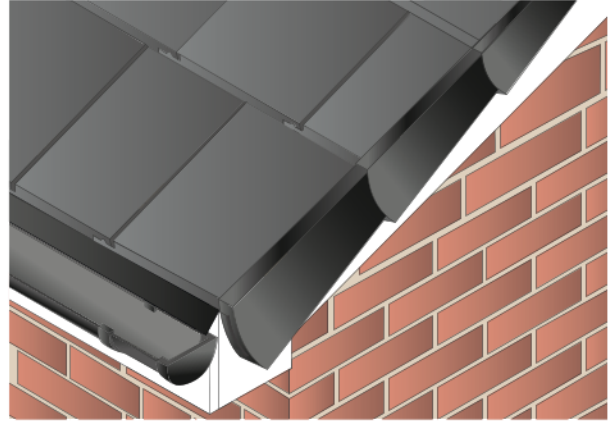
- 3 Snap the starter kit off the blanking plate. Starting at the bottom edge of the roof, insert the starter piece into the front end of the verge unit, and mark out the starter piece position on the fascia and barge board. Remove the unit and mechanically fix the starter piece into position through the grid.



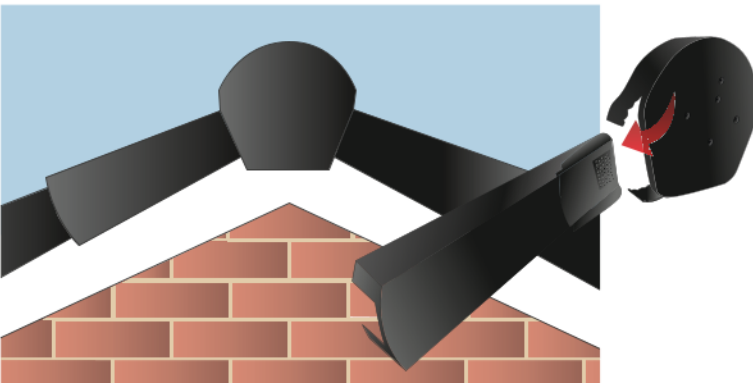
- 4 Slide the first verge unit over the tile at the eaves, and into the starter kit, fitting it under the head laps to ensure the unit is firmly held in place. Screw fix the unit through the top grid into the batten.



- 5 Slide the next verge unit into the upper edge of the first unit, press firmly to the tile, fitting it under the head laps to ensure the unit is firmly held in place and then nail the unit through the top grid into the batten.



- 6 Continue the process up along the barge board, until the ridge. If required, insert the blanking plate over the final verge nail grid to prevent water ingress. Now insert the ridge cap once the other verge is completed.



- 7 Continue this process up along the bargeboard along both sides until you reach the ridge. Insert a Ridge Cap, ensuring that the flexible flaps on the Ridge Cap contour around the outside of the Verge Unit. Fix the Ridge Cap to the ridge batten.

**FlapCap**  
TECHNOLOGY

*Flapcap Technology incorporates flexible flaps on the Ridge Cap that contour around the side of the verge unit, effectively creating a 'sealed' unit that prevents water ingress and infestation.*

Tel: +44 (0) 845 034 6008

e: enquiries@easy-trim.co.uk

f: +44 (0) 845 034 6010

Unit 12B Metcalf Drive  
Altham Industrial Estate | Altham  
Lancashire | BB5 5TU | England  
w: www.easy-trim.co.uk

find us:

