



Power flushing pump with antacid vertical axis. Designed for the washing of domestic systems equipped with flow inverter, complete hydraulic systems of valves and faucets. Pump suitable to work up to 15, max 20 radiators.

COD. 301301014

CHEMICAL AND PHYSICAL FEATURES

WEIGHT	17 kg
ELECTRICAL PROTECTION	IP 55
IN/OUT CONNECTIONS	3/4" F
MAX. FLOW RATE	50 l/min
OPERATING PRESSURE	1,6 bar
TANK CAPACITY	36 litres
MAX. TEMPERATURE	70°C
MATERIAL	PP
MOTOR	230vac /50 Hz/0,373 kW
DIMENSIONS	H: 630 mm L: 350 mm P: 350 mm

PACKAGING FEATURES

NUMBER OF PIECES PER BOX	1 pc
NUMBER OF PIECES PER EPAL PALLET	18 pcs
BOX DIMENSIONS	H: 67 L: 37 P: 37,5 cm
EPAL PALLET DIMENSIONS	80x120x214 cm
PRODUCT WEIGHT	16 kg
BOX WEIGHT	17,5 kg
EPAL WEIGHT	335 kg
CUSTOMS CODE *	8413.81.00
BARCODE EAN 13	8054633849927

*Data updated in May 2016

ADVANTAGES

- Unscrewign motor flange
- Flow inverter
- No damages in case of dry working
- Operating up to 70°C

BENEFITS

- Optimal heat exchange restoring
- Energy consumption reduction
- Reduction of energy consumption visible on your bill
- Reduction of processing time thanks to the complete hydraulic control system

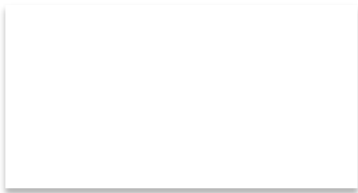
MAIN FEATURES

Hyperflush 36BG pump has been designed to offer to the final user a pump with small dimensions, light, manageable and safe.

Equipped with practical wheels for an easy handling.

The supporting structure has been designed in a unique polypropylene , reinforced and shock resistant tank (in white color, for a better vision of the liquid contained inside) and a motor with vertical axis.

This pump is equipped with reinforced pipes, flexible connections for an easy connection to the system. Equipped with flow inverter, through a manual lever, that helps to improve its efficiency, guaranteeing to the descaling/restoring liquid to alternatively acts in both sides of the circuit. For a good operation, it is suggested to use the restoring product BP 800, BP DECAL-SANIT, and potentially BP 400.



After its use, or at least at the end of the day, accurately clean the pump with recirculating water for at least 10 minutes to eliminate muds and the descaling solution. Hyperflush 36BG pump has been designed with anti-corrosion material and so, can resist to the acid products action (suitable for the descaling of boilers, kettles, heat exchangers, wall-mounted boilers and hearth-mounted boilers, cooling systems, plastic molding machines, evaporative cooling tower).

APPLICATION AND USE

Pump for the cleaning, refill, restoring and drain of heating and cooling systems both of conventional and low temperature, made of any plastic and metal material. Descaling with acid products of heat exchangers and pipes of sanitary systems.

WHAT DO I NEED TO INSTALL IT

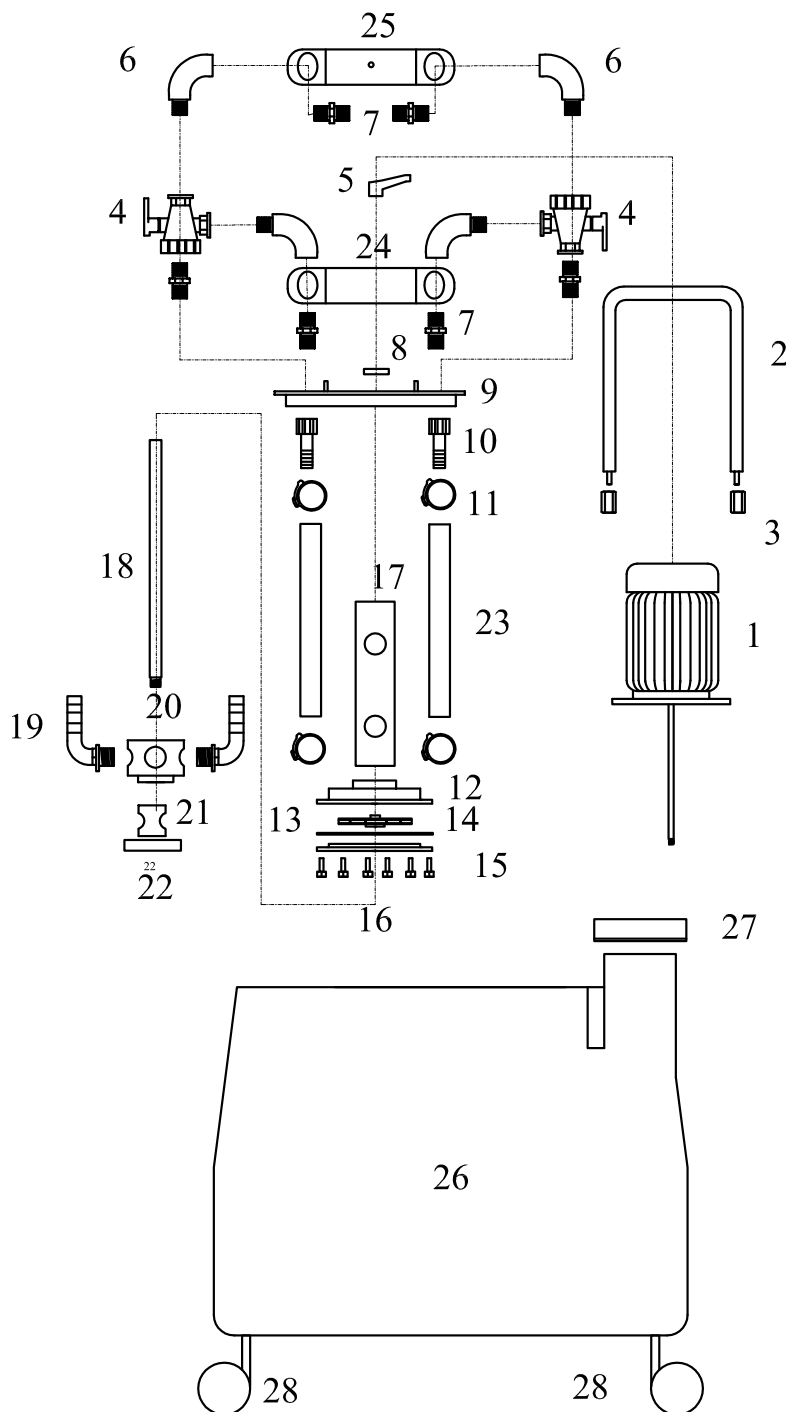
- Flexible pipes for an easier connection
- Nipples
- Connections
- Typical plumber 'tools for connections of different type.

CORRECT INSTALLATION

1. Connect the pipes of the device (discharge, return, charge and drain)
2. Control the connections endurance
3. Connect the pump to the system that has to be treated
4. Fill the tank with clean water and add the restoring/descaling chemical product



the 1990s, the number of people in the United States who are 65 years of age or older is projected to increase from 20 million to 35 million. The number of people 75 years of age or older is projected to increase from 10 million to 17 million. The number of people 85 years of age or older is projected to increase from 2 million to 4 million.



- 1 - MOTOR
- 2 - HANDLE
- 3 - PVC ANDLE NUTS
- 4 - 3 WAY VALVE
- 5 - SWITC LEVEL
- 6 - 3/4" ELBOW
- 7 - 3/4" NIPPLE
- 8 - CABLE SEAL
- 9 - FLANGE
- 10 - STRAIGHT HOSE CONNECTOR
- 11 - HERBIE HOSE CLAMP
- 12 - PUNO CASE
- 13 - IMPELLER110 MM
- 14 - IMPELLER BASKET
- 15 - IMPELLER LID
- 16 - PA SCREWS
- 17 - PUMP BODY
- 18 - SWITCH STEM
- 19 - 3/4" CURVE HOSE HOLDER
- 20 - SWITCH CILINDER
- 21 - SWITCH PISTON
- 22 - SWITCH LID
- 23 - SILICONE PIPE
- 24 - LOWER BRACKET
- 25 - TOP BRACKET
- 26 - ACID TANK 36
- 27 - CAP
- 28 - WHEELS

PACKAGING CONTENT

- Pump
- Bag with wheels
- Connection pipes equipped with connections of $\frac{3}{4}$ " and hose clamps:
 - 2 m dump reinforced hose
 - 2 m flow reinforced hose
 - 2 m return reinforced hose
- User's guide



MAINTENANCE

Respect all regulations for the use and disposal of the finished solution. It is suggested, in case of dripping, the immediate cleaning with water rinse. Be careful not to wet the motor of the pump. Periodically control the connections holding. Do not leave the pump unattended while it is in operation. At the end of descaling operations, proceed and abundantly rinse with clean water. Do not leave any acid product inside the tank.

OPTIONAL

1. Pump cleaning adaptor
COD. 301310001
2. Kit tubi HF
COD. 301310004



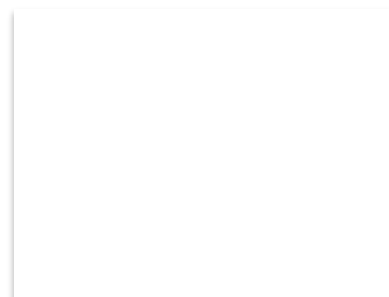
SIMILAR PRODUCTS

1. Transformer Combi 75
COD. 301301005
2. Transformer Combi 110
COD. 301301006
3. Transformer PFH 55
COD. 301301012
4. Transformer PFH 85
COD. 301301006



TO BE USED WITH

1. Conditioning products for heating systems
2. Geothermal products
3. Cooling products
4. Solar thermal products
5. Descaling products



OFFER DESCRIPTION

Descaling power flushing pump, with antacid vertical axis. Connection from ¾", tank 36 litres. Equipped with flow inverter, hydraulic control system with valves, tap and overflow. To be used to restore heating systems and to clean wall-mounted boilers, hearth-mounted boilers, big boilers, heat exchangers, boilers, small and medium systems. To be used up to 70°C. Flow rate 50 l/min, prevalence 1,6 bar. Electricity supply 230 VAC.

COMPLIANCE

This products mod. HYPERFLUSH 36BG has been designed and constructed in accordance with the following European directives (including all applicable amendments):

Directive 2006/42/EC: Machine


Directive 2006/95/EC: Low Voltage

Directive 2004/108/EC: Electromagnetic Compatibility

Directive 2011/65/EC: RoHS 2

In addition, declares, that the electrical material used to made the product is in compliance with Regulation CEI-EN 60034: Electrical rotating machines. Part 1: Nominal and operative features.

ORIGIN OF THE PRODUCT

 Made in Italy