

DISABLED TOILETS UK

DESIGNER BACK TO WALL DOC M DISABLED TOILET PACK – NO-TOUCH INFRARED CONTROLS

DTUK1235



Designer back to wall Doc M disabled toilet pack with chrome finish rails, with no-touch infrared tap and flush controls. This pack is also available with an optional stainless steel corner colostomy shelf and matching chrome Designer dispenser pack.

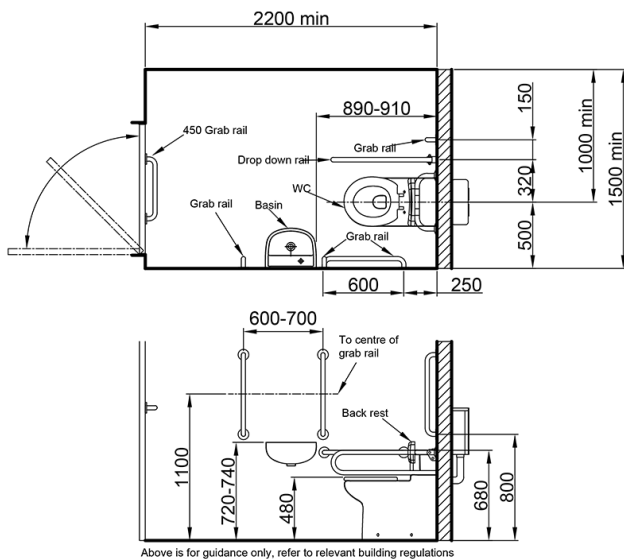
Our Designer range of Doc M toilet packs have been developed to give any DDA washroom a high quality contemporary feel, offering a highly functional washroom that is aesthetically superior to most other Doc M packs available in the UK.

NEED MORE INFORMATION?

Call us on 01603 558850 or
e-mail us at sales@disabled-toilets-uk.co.uk

SPECIFICATION

- Back to wall toilet pan
- Concealed cistern with no-touch infrared sensor flush control
- White toilet back-rest cushion mounted on chrome rail
- White plastic toilet seat ring
- Ceramic washbasin with chrome bottle trap
- Monobloc chrome no-touch infrared sensor basin mixer tap
- 5x chrome 620mm grab rails
- 1x chrome 800mm hinged support arm
- **1 Year Warranty**



ALSO AVAILABLE WITH

Manual Controls

DTUK1230

OPTIONS

With Corner Colostomy Shelf
Stainless Steel

DTUK1236

With Dispenser Pack
Chrome

DTUK1237