

DISABLED TOILETS UK

DESIGNER BACK TO WALL DOC M DISABLED TOILET PACK – MANUAL CONTROLS

DTUK1230



Designer back to wall Doc M disabled toilet pack with chrome finish rails, with manual tap and flush controls. This pack is also available with an optional stainless steel corner colostomy shelf and matching chrome Designer dispenser pack.

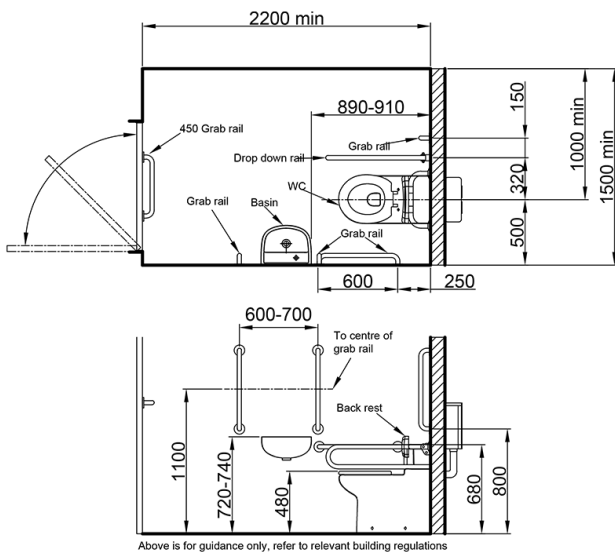
Our Designer range of Doc M toilet packs have been developed to give any DDA washroom a high quality contemporary feel, offering a highly functional washroom that is aesthetically superior to most other Doc M packs available in the UK.

NEED MORE INFORMATION?

Call us on 01603 558850 or
e-mail us at sales@disabled-toilets-uk.co.uk

SPECIFICATION

- Back to wall toilet pan
- Concealed cistern with push button flush plate
- White toilet back-rest cushion mounted on chrome rail
- White plastic toilet seat ring
- Ceramic washbasin with chrome bottle trap
- Monobloc chrome lever basin mixer tap with built-in TMV3 valve
- 5x chrome 620mm grab rails
- 1x chrome 800mm hinged support arm
- **1 Year Warranty**



ALSO AVAILABLE WITH

No-Touch Infrared Controls

DTUK1235

OPTIONS

With Corner Colostomy Shelf
Stainless Steel

DTUK1231

With Dispenser Pack
Chrome

DTUK1232