

# Instructions

## Table & Floor Lamp Base Kit

### What is in the box:

1 x Stick-It Panel  
2 x Painted Steel Rings  
1 x Foamex E27 Lampholder Disc  
1 x Roll of Double-Sided Tesa Tape  
1 x Finishing Tool

### Before you get started you will need:

- Covering of choice
- Clean flat working area
- Sharp Knife or Scissors
- Seam Roller (not essential)

### Electrical Components\*:

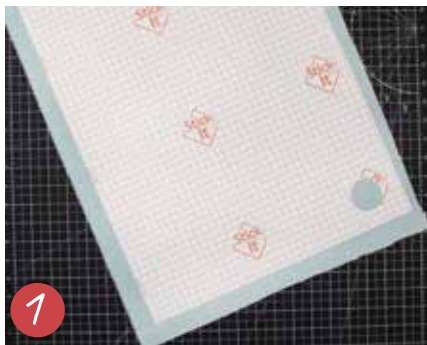
- E27 Lampholder
- 3 x E27 Lampholder Shade Rings
- Electrical Cable
- UK (3 pin) or EU (2 pin) Mains Plug

**Important info:** Please note the example below is for the Lamp Base model, they are the same instructions for the Floorbase models, it's just bigger. If your covering is directional, you need to think about which way your covering is stuck on to the panel. The hole in the panel is used for the lamp holder and cable to pass through and then plugs into your electrical socket.

**\*Electrical Components:** Electrical Assemblies are available to fit these table and floor lamp bases, consisting of an E27 Lampholder, Switched Cable and UK or EU Socket Plug. However, with the extensive choice of fashionable electrical components available, including fabric cables, you can design your own to match your interior or requirement.



Scan to view  
the video tutorial



Cut down your covering to a workable size. Place face down and position the Stick-It panel on top.

**Tip** Iron your covering first to remove any creases.



When you're happy with placement peel back some of the release paper and stick down on your covering.

**Tip** Use a weight, such as a tin, to stop the panel from moving.

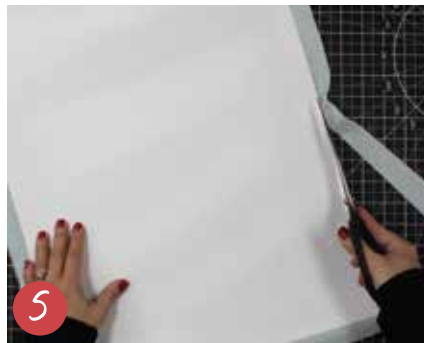


Smooth out from the middle and press the adhesive into the fabric firmly until all the release paper is removed.

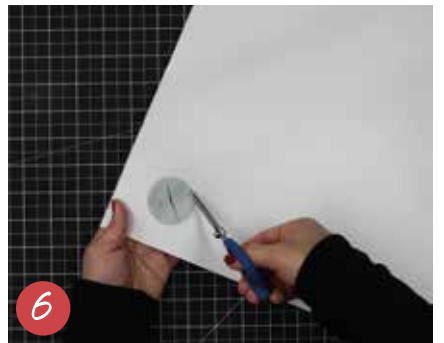
**Tip** If you feel a crease, peel back and try again.



After you have inspected your panel for creases, the panel is now ready for trimming.



Cut off surplus covering by running a sharp knife along the edges of the panel or use scissors.



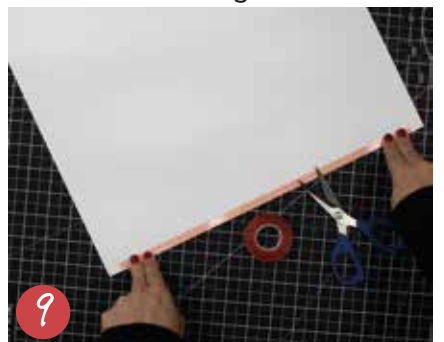
Use scissors or a sharp knife to cut around the hole that will be used to feed the lampholder and cable through.



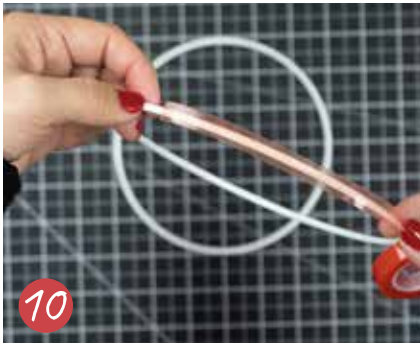
Snap back the creased edges (kiss-cut) around the panel to break the edge of the panel.



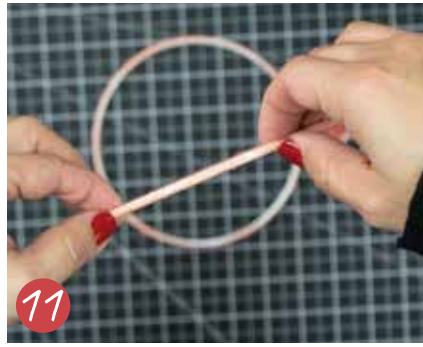
Carefully, to avoid fraying, remove the broken strips of kiss-cuts to leave your covering's edge.



Apply double-sided Tesa Tape to one side of the panel edge. This will be used to stick the seam.



Apply double-sided Tesa Tape to both rings.



Press the tape down evenly and firmly onto both rings.



Remove the release paper on both rings.



Place the rings on the panel edge and start to roll towards the seam edge (step 9).



Keep rings in line with the panel edge at all times (not on your covering). If you run out of line go back and correct.

*Tip* Don't press the rings down hard onto the panel, as this makes it more difficult for you to tuck the covering behind when finishing.



Before closing, remove the release paper from the double-sided Tesa Tape. When you get to the seam (the overlap), press the tape together from the centre out.



Turn over so the seam is now on a hard surface and apply firm pressure pressing along the seam with your hand.

*Tip* For best results use a seam roller.



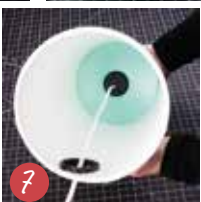
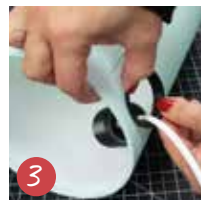
Pinch the fabric, pull taut and fold down onto the sticky rings.



Push the tool in the gap and swipe around the circumference until you're happy with the finish.

### Note

Your kit now includes a newly designed finishing tool that is compact and durable, engineered for superior performance and exceptional results every time.



1. Screw on shade ring to go behind lampholder.
2. Insert lampholder through hole.
3. Fix shade ring in hole to finish.
4. Screw on second shade ring on lampholder.
5. Flex and push through lampholder disc. Push disc up to the top of the lampholder.

6. Now you're ready to fit the lampholder.
7. Insert the lampholder through the hole in the disc.
8. Now you're ready to fit your lampshade.
9. Place lampshade utility fitting over lampholder and screw on the third shade ring on top to secure down.



Enjoy your professionally finished lamp base!