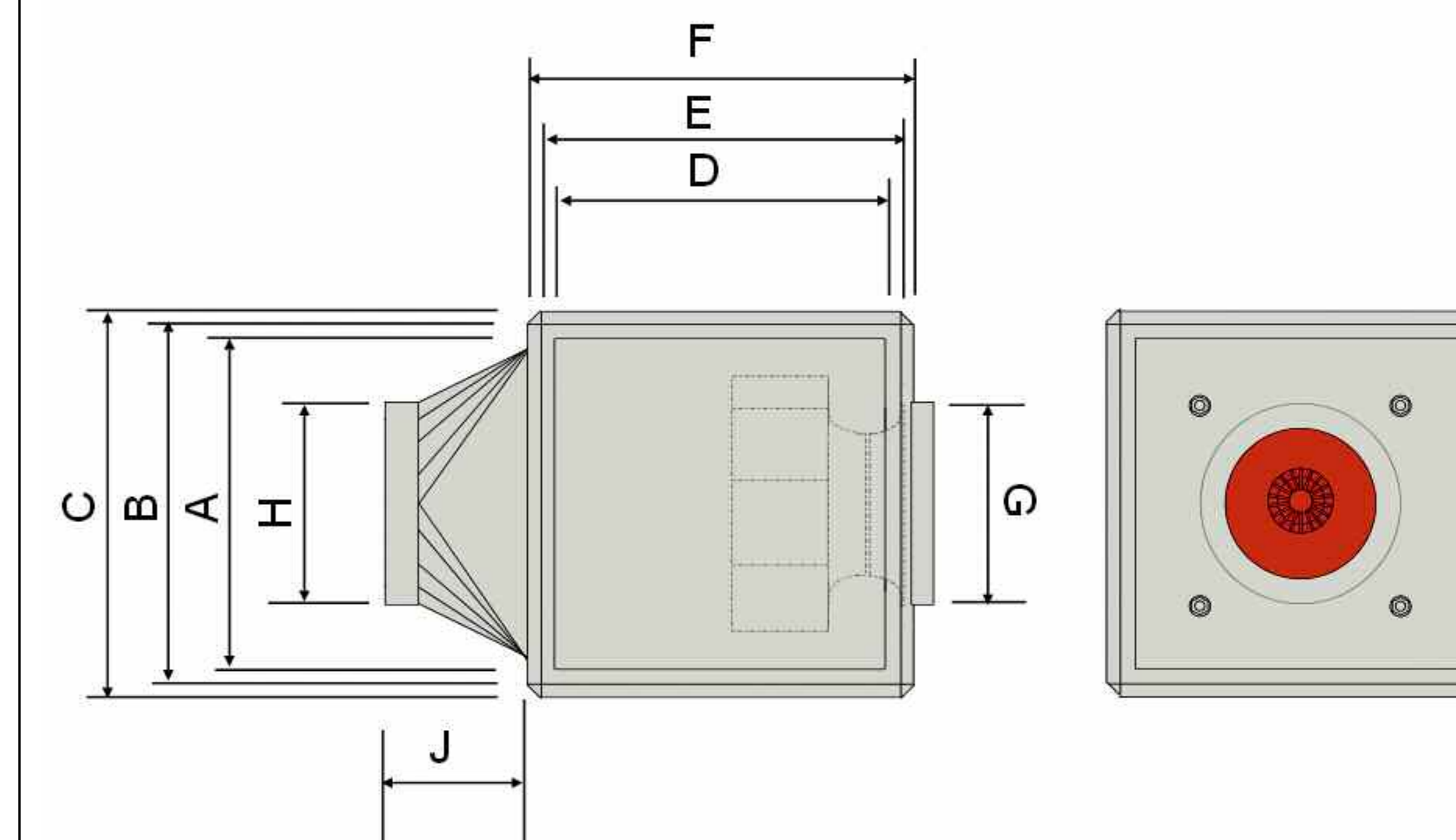


NEW!



SPECIFICATION

- Casing**
Frame extruded aluminium with 20 mm insulated galvanised sheet steel panels.
- Flow options**
Side panels are interchangeable to provide straight through or side outlet-see selection data.
- Impeller**
Backward curved steel impellers. Temperatures of -30 to +60 °C.
- Motors**
Direct drive external rotor motor.
- Connection**
Unit is supplied with circular inlet and outlet connections + flexible connectors.
- Electrical connection**
IP 54 terminal box on the rear of the motor with access through side panel.
- Installation**
Installation in any position with the option of straight through flow or side outlet through any panel.
- Sound levels**
Sound levels are given below.
- Protection**
Splashproof to IP 54.



ANCILLARIES



DIMENSIONS

Fan nominal size in mm	Wall bracket	External weather louver	Outdoor cover hood	Condensate collector	Anti-vibration mountings (set of 4)		Fan nominal size in mm	Dimensions in mm									
								A	B	C	D	E	F	G	H	J	
315	GB-WK 315	GB-WSG 315	GB-WSD 315	GB-KW 315	SDD-U		315	410	450	500	410	450	500	315	315	150	
355	GB-WK 355	GB-WSG 355	GB-WSD 355	GB-KW 355	SDD-U		355	380	420	500	380	420	500	355	355	150	
400	GB-WK 400	GB-WSG 400	GB-WSD 400	GB-KW 400	SDD-U		400	550	590	670	550	590	670	400	400	250	
450	GB-WK 450	GB-WSG 450	GB-WSD 450	GB-KW 450	SDD-U		450	550	590	670	550	590	670	450	450	250	
500	GB-WK 500	GB-WSG 500	GB-WSD 500	GB-KW 500	SDD-U		500	550	590	670	550	590	670	500	500	250	
560	GB-WK 560	GB-WSG 560	GB-WSD 560	GB-KW 560	SDD-U		560	680	720	800	680	720	800	560	560	250	
630	GB-WK 630	GB-WSG 630	GB-WSD 630	GB-KW 630	SDD-U		630	680	720	800	680	720	800	630	630	250	
710	-	GB-WSG 710	GB-WSD 710	GB-KW 710	SDD-U		710	900	940	1020	900	940	1020	710	710	250	



GigaBox centrifugal fans 315 to 710 mm diameter GBW & GBD

Hotline:
01206 228 500



Single phase models 230 V / 1 ph. / 50 Hz

SELECTION DATA

STRAIGHT THROUGH

Fan code	Speed rpm	Volume flow m³/s against static pressure Pa.													Motor power kW	Current Amps	Max. air flow temperature +°C	Speed controller		Starter with overheat protection	Weight kg	Sound level @ 4 m dB(A)
		0	50	100	150	200	250	300	400	500	600	700	800	900				with motor protection Transformer	without motor protection Transformer			
GBW 315/4	1325	0.375	0.322	0.261	0.200	0.128	0.033								0.135	0.58	55	–	TSW 1.5	–	31	29
GBW 355/4	1325	0.708	0.644	0.561	0.467	0.378	0.278	0.150							0.29	1.3	60	–	TSW 1.5	MW	32	34
GBW 400/4	1360	1.033	0.964	0.894	0.817	0.747	0.667	0.550	0.208						0.53	2.4	50	–	TSW 3.0	MW	52	38
GBW 450/4	1270	1.308	1.242	1.158	1.064	0.983	0.914	0.819	0.542	0.092					0.76	3.5	45	–	TSW 5.0	MW	49	40
GBW 500/4	1350	1.889	1.778	1.703	1.611	1.500	1.389	1.278	1.092	0.875	0.514				1.38	6.4	65	–	TSW 7.5	–	61	45

Three phase models 400 V / 3 ph. / 50 Hz

SELECTION DATA

STRAIGHT THROUGH

Fan code	Speed rpm	Volume flow m³/s against static pressure Pa.													Motor power kW	Current Amps	Max. air flow temperature +°C	Speed controller		Starter with overheat protection	Weight kg	Sound level @ 4 m dB(A)
		0	50	100	150	200	250	300	400	500	600	700	800	900				with motor protection Transformer	without motor protection Transformer			
GBD 500/4/4	1340	2.022	1.944	1.844	1.764	1.647	1.567	1.431	1.208	0.636	0.556				1.4	2.8	50	RDS 7 ¹⁾	–	M4	57	45
GBD 560/4/4	1350	2.972	2.889	2.778	2.667	2.556	2.444	2.333	2.083	1.833	1.556	1.222	0.750	0.167	2.5	4.8	55	RDS 7 ¹⁾	–	M4	90	44
GBD 630/4/4	1380	3.528		3.347		3.167		2.931	2.694	2.458	2.222	1.889	1.667	1.250	3.65	6.6	75	RDS 11 ¹⁾	–	M4	105	48
GBD 630/6/6	820	2.417	2.333	2.111	1.917	1.722	1.486	1.222	0.667						1.35	2.4	60	RDS 4 ¹⁾	–	M4	103	43
GBD 710/6/6	890	4.333	4.111	3.903	3.694	3.472	3.208	2.986	2.486	1.722	0.819				2.45	4.7	50	RDS 7 ¹⁾	–	M4	157	46

1) With motor overhear protection – requires 6 core cable to the fan.

Single phase models 230 V / 1 ph. / 50 Hz

SELECTION DATA

SIDE OUTLET

Fan code	Speed rpm	Volume flow m³/s against static pressure Pa.													Motor power kW	Current Amps	Max. air flow temperature +°C	Speed controller		Starter with overheat protection	Weight kg	Sound level @ 4 m dB(A)
		0	50	100	150	200	250	300	400	500	600	700	800	900				with motor protection Transformer	without motor protection Transformer			
GBW 315/4	1325	0.375	0.339	0.297	0.242	0.167	0.058								0.135	0.58	55	–	TSW 1.5	–	31	29
GBW 355/4	1325	0.744	0.681	0.625	0.556	0.506	0.392	0.264							0.29	1.3	60	–	TSW 1.5	MW	32	34
GBW 400/4	1360	1.067	1.025	0.964	0.903	0.833	0.781	0.703	0.431						0.53	2.4	50	–	TSW 3.0	MW	52	38
GBW 450/4	1270	1.394	1.342	1.272	1.203	1.111	1.036	0.947	0.417	0.139					0.76	3.5	45	–	TSW 5.0	MW	49	40
GBW 500/4	1350	2.083	2.000	1.917	1.833	1.758	1.647	1.572	1.361	1.092	0.739	0.139			1.38	6.4	65	–	TSW 7.5	–	61	45

Three phase models 400 V / 3 ph. / 50 Hz

SELECTION DATA

SIDE OUTLET

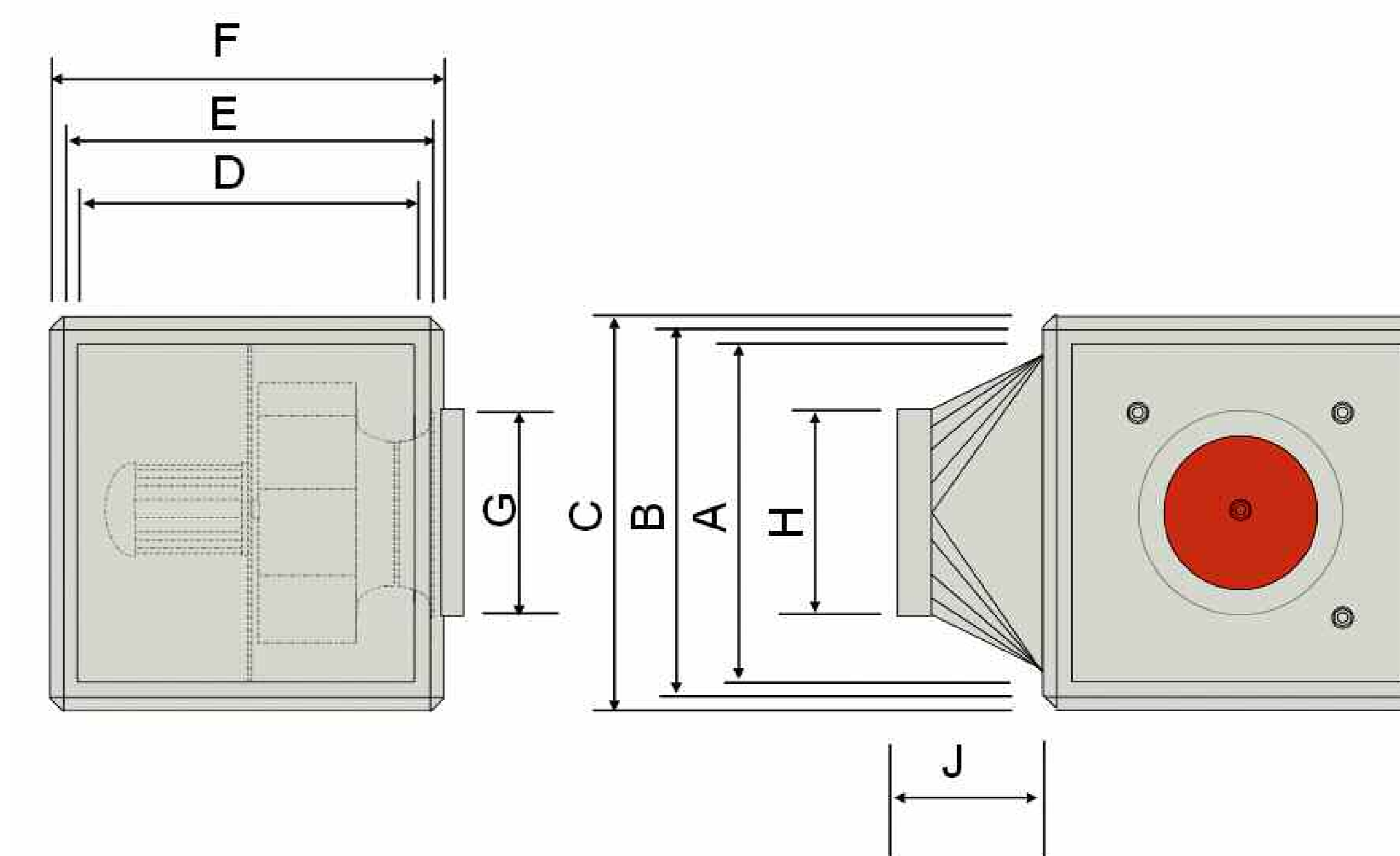
Fan code	Speed rpm	Volume flow m³/s against static pressure Pa.													Motor power kW	Current Amps	Max. air flow temperature +°C	Speed controller		Starter with overheat protection	Weight kg	Sound level @ 4 m dB(A)
		0	50	100	150	200	250	300	400	500	600	700	800	900				with motor protection Transformer	without motor protection Transformer			
GBD 500/4/4	1340	2.222	2.142	2.064	1.964	1.903	1.814	1.725	1.547	1.258	0.872	0.078			1.4	2.8	50	RDS 7 ¹⁾	–	M4	57	45
GBD 560/4/4	1350	3.278	3.194	3.111	3.056	2.944	2.833	2.750	2.500	2.278	2.000	1.611	1.083	0.333	2.5	4.8	55	RDS 7 ¹⁾	–	M4	90	44
GBD 630/4/4	1380	3.944		3.778		3.611		3.403	3.258	3.056	2.739	2.500	2.167	1.667	3.65	6.6	75	RDS 11 ¹⁾	–	M4	105	48
GBD 630/6/6	820	2.878	2.722	2.525	2.333	2.147	1.889	1.592	0.833						1.35	2.4	60	RDS 4 ¹⁾	–	M4	103	43
GBD 710/6/6	890	4.667	4.492	4.328	4.167	3.942	3.717	3.472	2.981	2.306	1.264				2.45	4.7	50	RDS 7 ¹⁾	–	M4	157	46

1) With motor overhear protection – requires 6 core cable to the fan.



SPECIFICATION

- Casing**
Frame extruded aluminium with 20 mm insulated galvanised sheet steel panels.
- Flow options**
The outlet connection can be made to one or two sides of the unit. Straight through connection is not possible with this model.
- Impeller**
Backward curved steel impellers. Temperatures of **-30 to +120 °C**.
- Motors**
Direct drive motors mounted outside the air stream.
- Connection**
Unit is supplied with circular inlet and outlet connections + 120 °C flexible connectors.
- Electrical connection**
IP 54 with the terminal box on the motor with access through any of the side panels.
- Installation**
Installation in any position with the outlet air flow at 90° to the inlet through any side panel position.
- Sound levels**
Sound levels are given below.
- Protection**
Splashproof to IP 54.



ANCILLARIES



DIMENSIONS

Fan nominal size in mm	Wall bracket	External weather louver	Outdoor cover hood	Anti-vibration mountings (set of 4)	Rain drainage		Fan nominal size in mm	Dimensions in mm									
								A	B	C	D	E	F	G	H	J	
355	GB-WK 355	GB-WSG 355	GB-WSD 355	SDD-U	GB-RA		355	380	420	500	380	420	500	355	355	150	
400	GB-WK 400	GB-WSG 400	GB-WSD 400	SDD-U	GB-RA		400	550	590	670	550	590	670	400	400	250	
450	GB-WK 450	GB-WSG 450	GB-WSD 450	SDD-U	GB-RA		450	550	590	670	550	590	670	450	450	250	
500	GB-WK 500	GB-WSG 500	GB-WSD 500	SDD-U	GB-RA		500	550	590	670	550	590	670	500	500	250	
560	GB-WK 560	GB-WSG 560	GB-WSD 560	SDD-U	GB-RA		560	680	720	800	680	720	800	560	560	250	
630	GB-WK 630	GB-WSG 630	GB-WSD 630	SDD-U	GB-RA		630	680	720	800	680	720	800	630	630	250	



GigaBox centrifugal fans 355 to 630 mm diameter UP TO 120 °C

Hotline:
01206 228 500



Single phase models 230 V / 1 ph. / 50 Hz

SELECTION DATA

SIDE OUTLET

Fan code	Speed rpm	Volume flow m ³ /s against static pressure Pa.													Motor power kW	Current Amps	Max. air flow temperature +°C	Speed controller without motor protection Transformer	Starter with overheat protection	Weight kg	Sound level @ 4 m dB(A)
		0	50	100	150	200	250	300	400	500	600	700	800	900							
GBW 355/4 T120	1340	0.825	0.767	0.694	0.614	0.533	0.458	0.319	0.058						0.32	1.6	120	TSW 3.0	MW	38	36
GBW 400/4 T120	1280	1.319	1.25	1.175	1.089	0.997	0.886	0.786	0.406	0.097					0.54	2.5	120	TSW 3.0	MW	62	40
GBW 450/4 T120	1370	1.806	1.728	1.636	1.542	1.450	1.358	1.264	1.111	0.861	0.472				1.0	4.6	120	TSW 7.5	MW	74	45
GBW 500/4 T120	1340	2.042	1.958	1.875	1.792	1.681	1.597	1.528	1.369	1.181	0.903	0.417	0.028		1.4	6.1	120	TSW 7.5	MW	75	45

Three phase models 400 V / 3 ph. / 50 Hz

SELECTION DATA

SIDE OUTLET

Fan code	Speed rpm	Volume flow m ³ /s against static pressure Pa.													Motor power kW	Current Amps	Max. air flow temperature +°C	Speed controller with motor protection Transformer	Starter with overheat protection	Weight kg	Sound level @ 4 m dB(A)
		0	50	100	150	200	250	300	400	500	600	700	800	900							
GBD 355/4/4 T120	1360	0.833	0.772	0.717	0.639	0.556	0.453	0.336	0.031						0.33	0.8	120	RDS 1 ¹⁾	M4	38	36
GBD 400/4/4 T120	1255	1.300	1.208	1.131	1.042	0.944	0.833	0.694	0.269	0.019					0.48	1.1	120	RDS 1 ¹⁾	M4	62	40
GBD 450/4/4 T120	1350	1.833	1.758	1.681	1.583	1.500	1.417	1.311	1.094	0.847	0.417				0.9	1.6	120	RDS 2 ¹⁾	M4	74	45
GBD 500/4/4 T120	1365	2.014	1.910	1.822	1.736	1.632	1.528	1.458	1.285	1.076	0.833	0.347	0.008		1.5	3.0	120	RDS 4 ¹⁾	M4	75	45
GBD 560/4/4 T120	1400	3.111	3.028	2.958	2.889	2.792	2.722	2.639	2.472	2.250	2.000	1.722	1.444	0.833	2.5	6.8	120	RDS 7 ¹⁾	M4	105	48
Inverter control with sinusoidal filter																					
GBD 630/4 T 120	1445	3.917		3.778		3.639		3.514	3.389	3.222	3.083	2.903	2.722		4.4	8.1	120	enquire	–	131	53

1) With motor overheat protection – requires 6 core cable to the fan.