

ultraSilence® ELS

The new ELS mono tube-dimension

The flush mounted fire protection solution

The versatile casing with metal back draught shutter can be used and fixed in almost any position. Discharge to the top, left, right or to the back. Likewise second room connection or flush toilet ventilation. According to the requirements on the construction site.

The flush mounted casing

is extremely adaptable regarding installation position and area of application. It allows discharge to the top, left, right or to the back. With connection for second room and flush toilet ventilation. For any adaptation on the construction side.

Electrical connection

So very simple! Easy connection using the removable quick plug connector saves installation time on site.

The "mounting simplicity" with the flush casing

With ELS VA, the clever plasterboard adaptor, the casing can be inserted and fastened in installation walls or thin boards (e.g. plasterboards). Make a hole for flexible duct and power cable. Mark the square opening with the press-pins at casing and cut it out. Everything fits in a few minutes.



Quiet.

26 dB(A)* for trickle ventilation at 35 m³/h and 35 dB(A) for general ventilation at 60 m³/h. This makes ultraSilence® ELS of Helios to the most quiet mono tube fans in relation to the air volume performance. More than 20 different ventilating fan applications – whether with motion sensor, humidity control etc. can be used effortlessly in the same surface or flush mounted casing.

Fan unit 60 m³/h page 20

– for bathroom **or** toilet

Fan unit 100 m³/h page 21

– for bathroom **and** toilet
or kitchen

Unique + clever.

Helios offers filter change display and long-term filter for long cleaning intervals as standard. Effortless filter change. Just as the extremely practical, tool less “click” assembly. Helios offers the smart ELS-VA solution for very fast installation of the casing in covered shafts and plasterboards. The accessory program covers these and further assembly aids for which much time can be saved with the installation:

accessories for flush mounted casing, filter and switch. page 23

Flat.

Very slim: ELS-GU, the depth of universal flush mounted casing is only 89 mm.

Now the installation space can be really shallow. The new ELS generation solves every positioning problem and is mounted in no time.

ultraSilence® dimensions page 22

Simply the best.

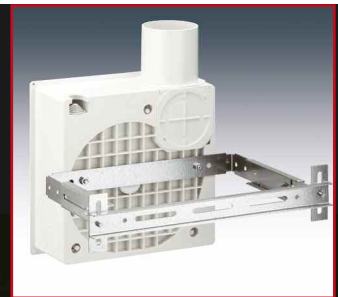
The positioning of the ELS-casing is very easy. On the back side of the casing embedded turn-locked bracket which is vertically adjustable as well as in height and depth. Alternatively there are two predetermined breaking points for direct screw connection with elements provided by customer. The installation never was more convenient!



* (with ELS-GU at A_L=10 m² to DIN 18017 Pt. 3)



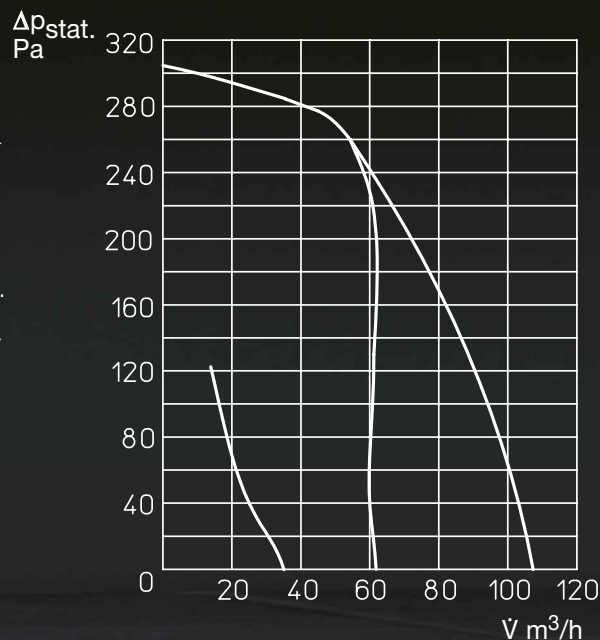
The new flush mounted casing ELS-GU in comparison with the previous casing.



Strong.

260 Pa at 60 m³/h.

Thus ultraSilence® ELS achieves the highest pressure capacity of all times. This permits the smallest pipe cross sections with the main riser, reduces investment costs and increases the usable living space. Determination of diameters of main ducts page 16, 17

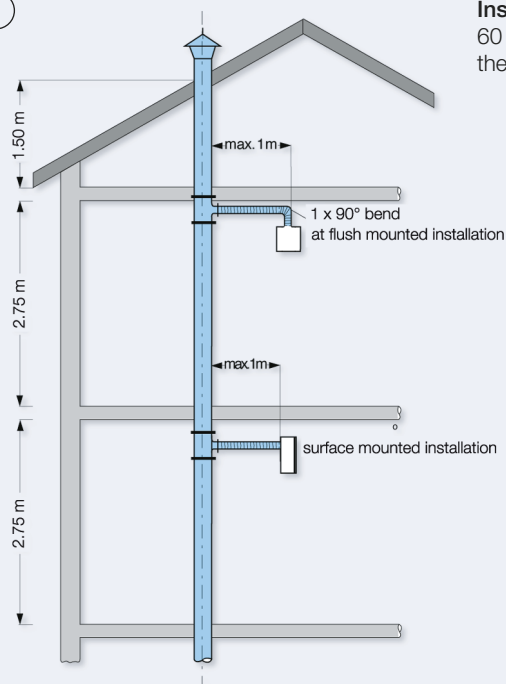


For easy design, the regulations from DIN 18017, Pt. 3 have been integrated in the diagrams below.

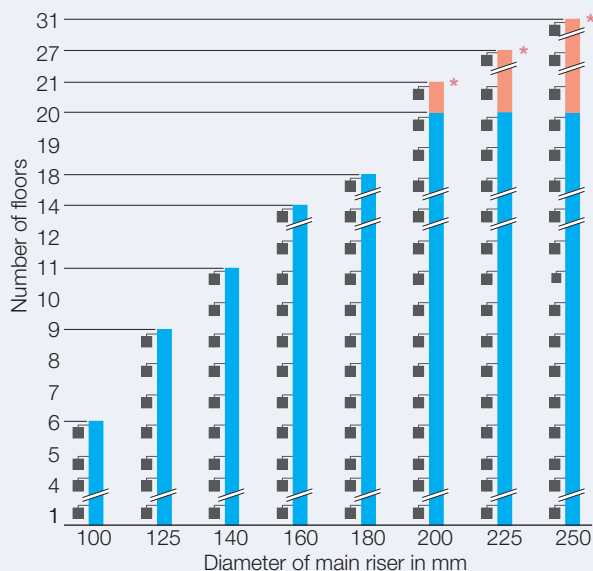
60 m³/h Bathroom or toilets

1 unit per floor

1

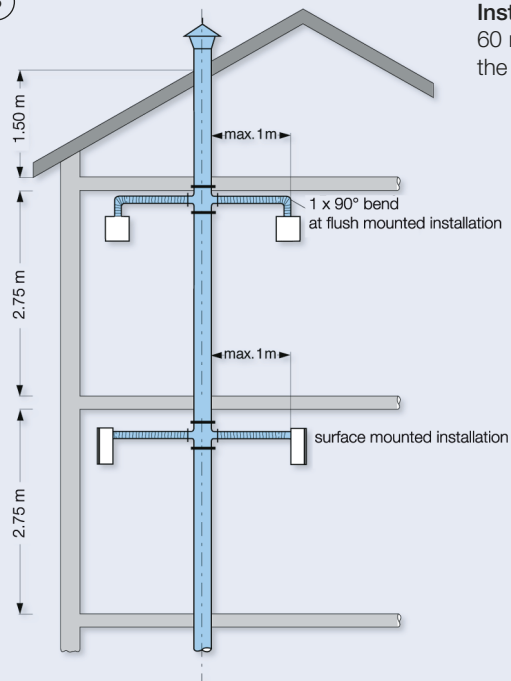


Installation of 1 unit per floor with 60 m³/h designed air flow volume and operation of all units at the same time.

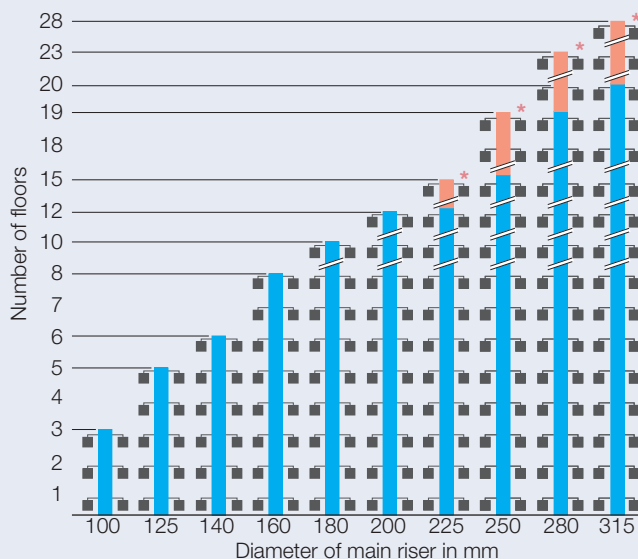


2 units per floor

3



Installation of 2 units per floor with 60 m³/h designed air flow volume and operation of all units at the same time.



Assuming a room height of 2.75 m, a straight ducting without bends, a ducting length of max. 1.5 m from last unit to air extract above the roof as well as max. 60 Pa between ventilated room and exhaust opening, the required main riser diameter can be read from above's diagram.

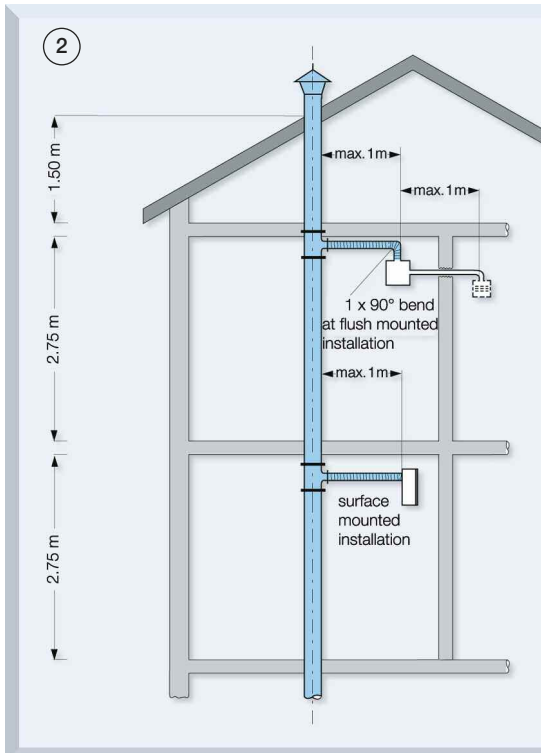
Copies of approvals are available on request.
 Approval No. Z-51.1-193.

* if all fans operate the same time some noise increase maybe observed when operating in the red zone

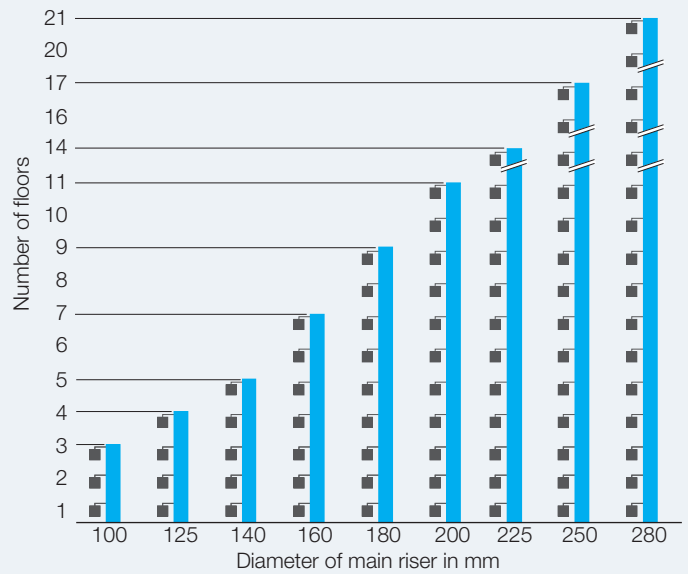
They are valid for a designed air flow volume of 60 or 100 m³/h per unit and operation of all units at the same time.

100 m³/h One and two room ventilation

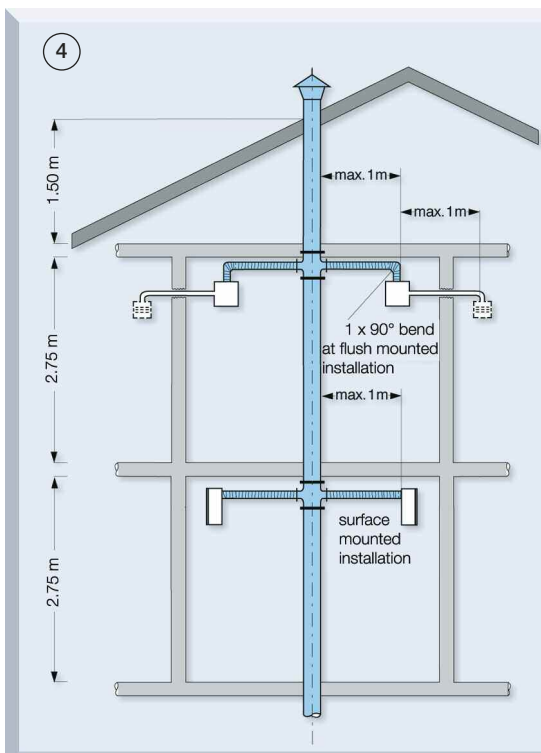
1 unit per floor (possibly with extraction for second room)



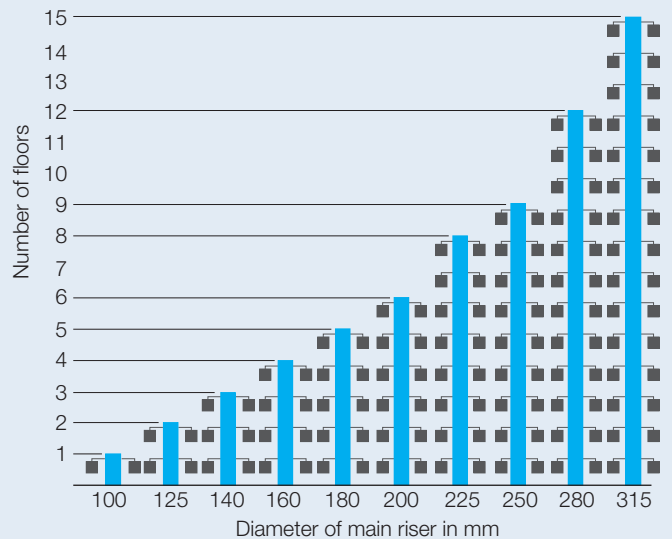
Installation of 1 unit per floor with
100 m³/h designed air flow volume and operation of all units at the same time. (Volume e.g. = 100 m³/h. Second room ventilation with one unit = bathroom 60 m³/h, toilet 40 m³/h).



2 units per floor (possibly with extraction for second room)



Installation of 2 units per floor with
100 m³/h designed air flow volume and operation of all units at the same time. (Volume e.g. = 100 m³/h. Second room ventilation with one unit = bathroom 60 m³/h, toilet 40 m³/h).



Example 1:
Type of room: bathroom/toilet
 $\dot{V} = 60 \text{ m}^3/\text{h}$
Units per floor: 1
Floor levels: 9
Main riser diameter: ?

According to diagram ①
Main riser diameter: 125 mm

Example 2:
Type of room: bathroom separated toilet with one unit or kitchen ventilation
 $\dot{V} = 100 \text{ m}^3/\text{h}$ (bathroom 60 m³/h and toilet 40 m³/h)
Units per floor: 2
Floor levels: 6
Main riser diameter: ?

According to diagram ④
Main riser diameter: 200 mm

Flush mounted casing for one or two room ventilation, without fire protection

All casings generally approved by the DIBt with approval No. Z-51.1-193.

ELS-GU

Ref. No. 8111



Description

Flush mounted casing **without fire protection**, with airtight backdraught shutter. Spigot lateral, to the top (as delivered), rotatable to the left or right. Changeable by means of an accessory set (-ARS, Ref. No. 8185) for discharge to the back in any position. Quick plug connector for electrical connection which is removable. Made from flame retardant polymer, fire class B 2. Reinsertable cover plate. Spigot diameter 80 mm.

Application

For ventilation of bathroom or toilet, by means of accessory set also for two room ventilation of bathroom and toilet. Flush mounted installation in wall, ceiling or shafts. Connection of 1 or 2 units to one single main riser up to 20 floors possible. Fire protection can be established by the use of fire damper.

ELS-GUBA

Ref. No. 8114



Flush mounted casing **with fire protection shutter K 90, casing made from flame retardant polymer fire class B 2, metal discharge spigot (to be connected to fire rated ducting) with automatic backdraught shutter and shut-off with release of fusible link.** Discharge spigot lateral to the top (as delivered), rotatable to the left or right. Changeable by means of an accessory set (-ARS, No. 8185) for discharge to the back in any position. Reinsertable cover plate. Spigot diameter 80 mm.

For ventilation of kitchens*, bathroom or toilet. By means of accessory set (-ZS, Ref. No. 8186) also for two room ventilation of bathroom and toilet. Flush mounted installation in ceiling or wall, as well as outside of K 90-shafts suitably fire rated. Connection of 1 or 2 units to one single main riser up to 20 floors possible.

Flush mounted casing for one room ventilation, with fire protection encasement

ELS-GUB

Ref. No. 8112



Flush mounted casing **with fire protection encasement K 90. For fitting into fire rated wall, ceilings or partitions. Metal discharge spigot with automatic backdraught shutter and shut-off with release of fusible link.** Discharge spigot lateral to the top (way of delivery), turnable to the left or right. Quick plug connector for electrical connection removable. Reinsertable cover for protection when plastering. Spigot diameter 80 mm.

Flush mounted installation in wall, ceiling and K 90 shafts suitably fire rated. Connection of 1 or 2 units to one single main riser up to 20 floors possible.

ELS-GUBR

Ref. No. 8113



As ELS-GUB, however **discharge spigot to the back, rotatable by 90° into any position.** For the shortest connection to the main line.

As ELS-GUB.

| Discharge lateral, to the top, left or right | Discharge to the back by means of accessory | One room ventilation | Two room ventilation by means of accessory |
|--|---|----------------------|--|
| ● | ELS-ARS Ref. No. 8185 | ● | ELS-ZS ¹⁾ Ref. No. 8186 |
| ● | ELS-ARS Ref. No. 8185 | ● | ELS-ZS ¹⁾ Ref. No. 8186 |
| ● | — | ● | — |
| — | ● | ● | — |

* For apartment kitchens use of fan unit with 100 m³/h recommended.

¹⁾ Consisting of discharge unit for second room and spigot for second room (left, right or to the bottom applicable).

Flush mounted casing for two room ventilation, with fire protection encasement

All casings generally approved by the DIBt with approval No. Z-51.1-193.

ELS-GUBZL
Ref. No. 8115



Description

Flush mounted casing **with fire protection encasement K 90 and spigot for second room on the left.** Discharge spigot for main room lateral, to the top (as delivered), rotatable to the left or right. Metal discharge spigot with automatic backdraught shutter and shut-off with release of fusible link. Quick plug connector for electrical connection removable. Reinsertable cover plate for protection when plastering. Spigot diameter 80 mm.

Application

Two room ventilation of bathroom and toilet. Installation in wall, ceiling and K 90 qualified shafts suitably fire rated. Connection of 1 or 2 units to one single main riser up to 20 floors is possible. Fan unit with 100 m³/h recommended.

ELS-GUBZR
Ref. No. 8117



As ELS-GUBZL, however spigot for second room **on the right.**

As ELS-GUBZL. Fan unit with 100 m³/h recommended.

ELS-GUBRZL
Ref. No. 8116



As ELS-GUBZL, however **discharge spigot to the back and rotatable by 90° into any position.**

Two room ventilation of bathroom **and** toilet. Otherwise as ELS-GUBZL. Fan unit with 100 m³/h recommended.

ELS-GUBRZR
Ref. No. 8118



As ELS-GUBZR, however **discharge spigot to the back and rotatable by 90° into any position.**

Two room ventilation of bathroom **and** toilet. Otherwise as ELS-GUBZL. Fan unit with 100 m³/h recommended.

Surface mounted casing

ELS-GAP
Ref. No. 8127



Surface mounted casing **without fire protection**, with airtight backdraught shutter installed in the discharge spigot, for any mounting position by 90° rotatable. With quick plug connector for electrical connection. Made from polymer in white. Discharge spigot diameter 80 mm.

For ventilation of bathroom or toilet. Surface mounted wall or ceiling installation. For connection to one single main riser up to two floors applicable. Connection of 1 or 2 casings per floor possible.

ELS-GAPB
Ref. No. 8128



Surface mounted casing **with fire protection shutter K 90, metal discharge spigot with automatic backdraught shutter and shut-off with release of fusible link.** For any mounting position by 90° rotatable. With quick plug connector for electrical connection. Made from flame retardant polymer, fire class B 2. Discharge spigot diameter 80 mm.

For ventilation of apartment kitchens, bathroom or toilet. Surface mounted wall or ceiling installation. Connection of 1 or 2 units to one single main riser up to 20 floors possible. Fan unit with 100 m³/h recommended.

| Discharge lateral, to the top, left or right | Discharge to the back | One room ventilation | Extraction set for second room accessory |
|--|-----------------------|----------------------|--|
| • | — | — | ELS-ZS Ref. No. 8186 |
| • | — | — | ELS-ZS Ref. No. 8186 |
| — | • | — | ELS-ZS Ref. No. 8186 |
| — | • | — | ELS-ZS Ref. No. 8186 |
| — | • | • | — |
| — | • | • | — |

■ Fan units with 60 m³/h air flow volume. For bathroom or toilet.

All fans generally approved by the DIBt with approval No. Z-51.1-193.

ELS-V 60
Ref. No. 8131



Description

Fan units **with 60 m³/h air flow volume**. Delivered complete with flat fascia (white) and ultraSilence® technology. With permanent filter and filter control as standard. Integrated quick plug connector for electrical connection. Insulation class II, protection to IP 55, for installation in zone 1 of bathrooms. Maintenance free, energy saving ball bearing motor 230 V / 1 ph. / 50 Hz / 18 W. Sound levels: sound power 39 dB(A), sound pressure 35 dB(A).*

Application

For ventilation of shower, bathroom or toilet. Control manually via the light switch. The overrun which is necessary in windowless rooms is to be guaranteed by means of an overrun timer (accessory).

ELS-VN 60
Ref. No. 8137

As ELS-V 60, **with added built-in overrun timer**, run on time approx. 6 min., delayed start approx. 45 sec. (or none by manual adjustment).

For ventilation of rooms as previously mentioned. With overrun function for windowless rooms. Control via the light switch.

ELS-VNC 60
Ref. No. 8143

As ELS-V 60, **with added adjustable overrun and interval operation**. Delayed start of 0 or 45 sec., run on time 6, 12, 18 or 24 min. and intervals of 4, 8, 12 or 24 hours manually adjustable.

Automatic, periodical ventilation of rooms with low user frequency (hotel, holiday homes). Individually adjustable run over times increase the comfort in the private area.

ELS-VP 60
Ref. No. 8149

As ELS-V 60, **with added integrated motion sensor PIR, ventilates** automatically when entering the room. Run on time approx. 6 min. Electrical connection is direct to the power supply with-out need for a switch.

Automatic, PIR controlled ventilation without the need of a switch. Automatically switches on with room occupancy.

ELS-VF 60
Ref. No. 8161

As ELS-V 60, **with added built-in electronic dynamic humidity sensor**. With manual adjustable set point humidity level, the fan runs automatically until the room humidity is back to normal. Run on time approx. 6 min. and delayed start approx. 45 sec. when switched on/off manually.

Ideally for the prevention of damages due to humidity and mould in small, humidity polluted rooms. Automatically switches on with raised humidity.

■ Fan units with 2 speeds 60/35 m³/h. For bathroom or toilet.

ELS-V 60/35
Ref. No. 8133



Fan units **with 2 speeds (60/35 m³/h) for trickle and boost ventilation**. Delivered complete with flat fascia (white) and ultraSilence® technology. With permanent filter and filter control as standard. Integrated quick plug connector for electrical connection. 230 V / 1 ph. / 50 Hz / 18/9 W. Sound levels: sound power 39/30 dB(A), sound pressure 35/26 dB(A)*, Otherwise as ELS-V 60.

For ventilation of small rooms (shower, bathroom, toilet) with high polluted air. The low speed can be connected for continuous trickle operation. The high speed is then controlled manually via the light switch. Manual controlling of both speed steps with switch DSEL 2 possible. Run on time by using available accessory.

ELS-VN 60/35
Ref. No. 8139

As ELS-V 60/35, **with added built-in overrun timer**, run on time approx. 6 min., delayed start approx. 45 sec. (or none by mechanical adjustment).

As ELS-V 60/35. The built-in overrun timer causes extended operation on high performance level after manual switching off.

ELS-VF 60/35
Ref. No. 8163

As ELS-V 60/35, **with added built-in electronic dynamic humidity sensor**. Trickle and boost ventilation. With manual adjustable set point humidity level, the fan runs automatically on high speed until the room humidity is back to normal. High air flow with run on time approx. 6 min., delayed start approx. 45 sec. when switched on/off manually.

Ideally for the prevention of damage caused by humidity and mould in small, humidity polluted rooms. Automatic operation with raised humidity.

possible accessories

| DSEL 2 No. 1306 2 speed on/off switch | ZT No. 1277 Overrun timer with variable run on time | ZNE No. 0342 ZNI No. 0343 Overrun timer | ZV No. 1279 Electronic overrun timer |
|---|---|---|--|
| — | • | • | • |
| — | — | — | — |
| — | — | — | — |
| — | — | — | — |
| — | — | — | — |
| • | • | — | • |
| • | — | — | — |
| • | — | — | — |

* with A_L = 10 m² equivalent absorption surface in combination with casing type ELS-GU, discharge lateral. To DIN 18017, Pt. 3, edition 1990, digit 6.2.4 footnote 3.

Fan units with 100 m³/h air flow volume. For bathroom and toilet or kitchen.

All fans generally approved by the DIBt with approval No. Z-51.1-193 and meets Document F of the building regulations.

ELS-V 100
Ref. No. 8132



Description

Fan units **with 100 m³/h air flow volume**. Delivered complete with flat fascia (white) and ultraSilence® technology. With permanent filter and filter control as standard. Integrated quick plug connector for electrical connection. Insulation class II, protection to IP 55, for installation in zone 1 of bathrooms. Maintenance free, energy saving ball bearing motor 230 V / 1 ph. / 50 Hz / 34 W. Sound levels: sound power 51 dB(A), sound pressure 47 dB(A)*.

Application

Simultaneous ventilation of bathroom **and** toilet (flush mounted). Ventilation of kitchen apartments. Overrun function by accessories possible.

ELS-VN 100
Ref. No. 8138

As ELS-V 100, **with added built-in overrun timer**, run on time approx. 6 min., delayed start approx. 45 sec. (or none by manual adjustment).

Simultaneous ventilation of bathroom **and** toilet. Ventilation of kitchen apartments.

ELS-VNC 100
Ref. No. 8144

As ELS-V 100, **with added adjustable overrun and interval operation**. Delayed start of 0 or 45 sec., run on time 6, 12, 18 or 24 min. and intervals of 4, 8, 12 or 24 hours manually adjustable.

Automatic, periodical ventilation of rooms (also covering second room ventilation) with low user frequency (hotel, holiday homes). Individually adjustable run over times increase the comfort in the private area.

ELS-VP 100
Ref. No. 8150

As ELS-V 100, **with added integrated motion sensor ventilates** automatically when entering the room. Run on time approx. 6 min. Electrical connection is direct to the power supply without need for a switch.

Automatic, PIR controlled ventilation without the need of a switch. Automatically switches on with room occupancy.

Fan units with 100/60 m³/h and 100/60/35 m³/h air flow volume. For bathroom and toilet or kitchen.

ELS-VN 100/60
Ref. No. 8141



Fan units **with 2 speeds (100/60 m³/h) for trickle and boost ventilation and built-in overrun timer**. Run on time approx. 6 min., delayed start approx. 45 sec. (or none by mechanical adjustment). Delivered complete with flat fascia (white) and ultraSilence® technology. With permanent filter and filter control as standard. 230 V / 1 ph. / 50 Hz / 18/9 W. Sound levels: sound power 34/18 dB(A), sound pressure 47/35 dB(A)*. Otherwise as ELS-V 100.

Simultaneous ventilation of bathroom **and** toilet (flush mounted). Ventilation of kitchen apartments. The low speed can be connected for continuous trickle operation. The high speed is controlled manually via the light switch. Manual controlling of both speed steps with switch DSEL 2 possible.

ELS-V 100/60/35
Ref. No. 8136

As ELS-V 100, **with 3 speeds (100/60/35 m³/h) for trickle and boost ventilation**. 230 V / 1 ph. / 50 Hz / 34/18/9 W. Sound levels: sound power 51/39/30 dB(A), sound pressure 47/35/26 dB(A)*.

The slow or medium speed can be connected for continuous operation and be switched by means of DSEL 2. Manual operation by means of DSEL 3.

ELS-VF 100/60/35
Ref. No. 8166

Fan units **with 3 speeds (100/60/35 m³/h) for trickle and boost ventilation and with built-in electronic dynamic humidity sensor**. 230 V / 1 ph. / 50 Hz / 34/18/9 W. Sound levels: sound power 51/39/30 dB(A), sound pressure 47/35/26 dB(A)*. Otherwise as ELS-VF 60/35.

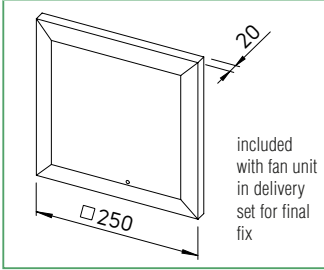
Ideal for the prevention of damage caused by humidity and mould in small, humidity polluted rooms. Automatic operation with raised humidity.

possible accessories

| DSEL 2 No. 1306 2 speed on/off switch | ZT No.1277 Overrun timer with variable run on time | ZNE No. 0342 ZNI No. 0343 Overrun timer | ZV No.1279 Electronic overrun timer |
|---|--|---|---|
| — | • | • | • |
| — | — | — | — |
| — | — | — | — |
| — | — | — | — |
| • | — | — | — |
| or DSEL 3 Ref. No. 1611 | • | — | • |
| or DSEL 3 Ref. No. 1611 | — | — | — |

* with A_L = 10 m² equivalent absorption surface in combination with casing type ELS-GU, discharge lateral. To DIN 18017, Pt. 3, edition 1990, digit 6.2.4 footnote 3.

ultraSilence® ELS-facia



Dimensions in mm

Flush mounted casing

- Flush mounted casing for one and two room ventilation

Flush mounted casing

- for one room ventilation
- with fire protection encasement

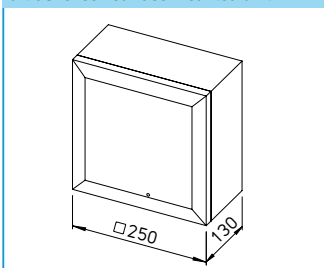
Flush mounted casing

- for two room ventilation
- with fire protection encasement

Accessories

- for flush mounted casing

ultraSilence® surface mounted unit



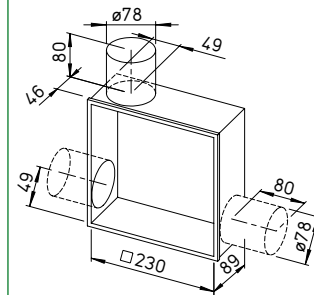
Dimensions in mm

Surface mounted casing

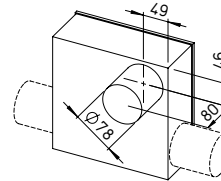
- with and without fire protection

ELS-GU Flush casing without fire protection

Optional with spigot for second room (using accessory kit ELS-ZS)

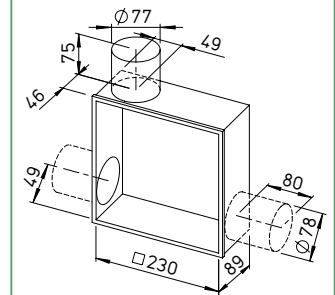


Optional with discharge to the back (using accessory kit ELS-ARS)

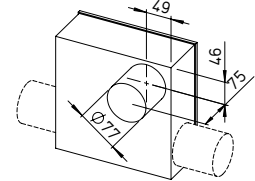


ELS-GUBA Flush casing with fire protection

Optional with spigot for second room (using accessory kit ELS-ZS)

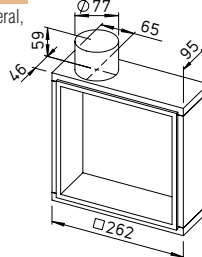


Optional with discharge to the back (using accessory kit ELS-ARS)



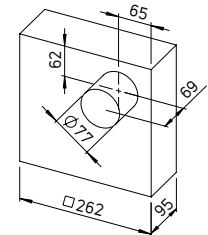
ELS-GUB

Discharge lateral, to the top, rotatable to the left or right



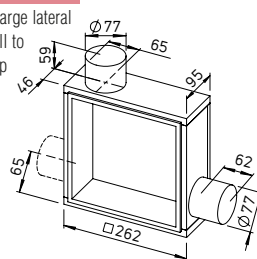
ELS-GUBR Discharge to the back,

rotatable by 90° into any position



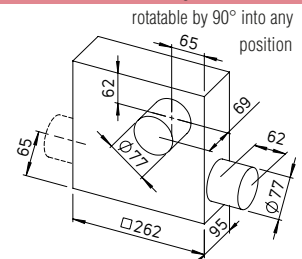
ELS-GUBZL / R

Discharge lateral as well to the top



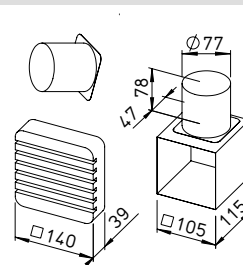
ELS-GUBRZL / R Discharge to the back,

rotatable by 90° into any position



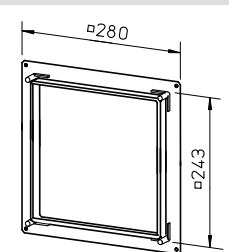
ELS-ZS

Second room kit

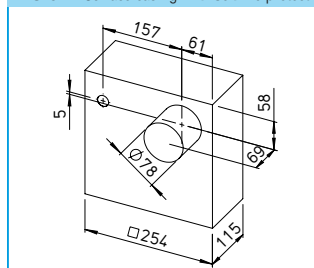


ELS-VA

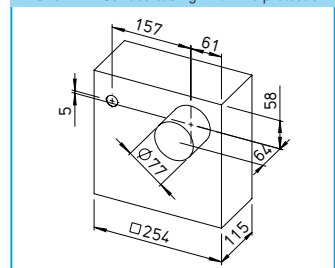
Plasterboard adapter



ELS-GAP Surface casing without fire protection

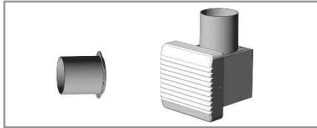


ELS-GAPB Surface casing with fire protection



Accessories for flush mounted casing

ELS-ZS
Ref. No. 8186



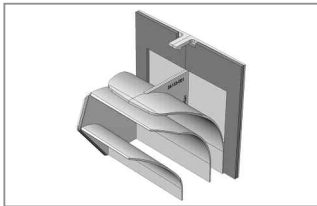
For casing types ELS-GU, -GUBA and -GUB..Z..

Second room kit, consisting of plenum box and second room spigot.

ELS-ZAS
Ref. No. 8184

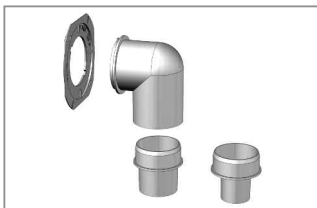
Second room spigot ELS-ZAS, optional applicable on the right or on the left, nom. dia. 75/80 mm.

ELS-ARS
Ref. No. 8185



Adaption kit for discharge to the back, consisting of diverter and rivets (for metal spigot of type ELS-GUBA).
For discharge to the back with all flush mounted casings without fire protection encasement.

ELS-WCS
Ref. No. 8191



Toilet extraction kit, consisting of bend 90° with Ø 50 mm, stepped spigot Ø 40 / Ø 30 mm and cap
For types -GU and -GUBA.

ELS-MHU
Ref. No. 8187



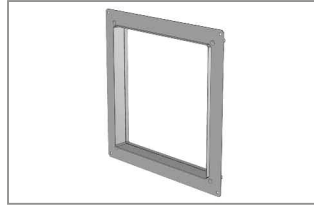
Universal mounting bracket, for flush mounted casing for fixing on walls, in shafts and false ceilings. Adjustable vertically, in height and perpendicular.

ELS-MB
Ref. No. 8188 (fig. n/a)

Mounting holder, for integration in plasterboard systems in connection with system elements of plasterboard suppliers.

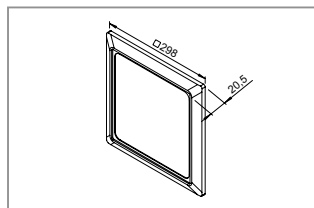
For all flush mounted casings.

ELS-VA
Ref. No. 8189



Plasterboard adapter, for room-sided casing insertion in covered shafts and plasterboards.
For types -GU and -GUBA.

ELS-AGR
Ref. No. 8193



Spacer frame, to be fixed between wall and facia, if the flush mounted casing protrudes past the plaster. Covers up to 15 mm.

Filters and switches

ELF-ELS
Ref. No. 8190



Spare permanent filter for ELS-fan-units, can be cleaned in dishwasher (contents: 2 pcs.)

ELF-ZS
Ref. No. 0557

Spare filter, for second room plenum box ELS-ZS (contents: 5 pcs.)

DSEL 2
Ref. No. 1306



Two speed on/off switch
Reverse and on/off switch of ELS-fans with 2 speeds. Room light can be wired in parallel. For flush mounted installation.
230 V / 1 ph. / 50/60 Hz,
I max. 3 A (ind.), IP 30
W 80 x H 80 x D 15 mm

DSEL 3
Ref. No. 1611



Three speed and operation switch with 0 position for the control of ELS-fans with 3 performance levels. Room light can not be wired in parallel. For flush mounted installation.
230 V / 1 ph. / 50/60 Hz,
I max. 3 A (ind.), IP 30
W 80 x H 80 x D 23 mm

ZNE
Ref. No. 0342



Electronic overrun timer ZNE, with stepless adjustable run on time 0 to 21 min. Delayed start (approx. 45 sec.) which can be switched off.
230 V / 1 ph. / 50/60 Hz, I max. 0.8 A (ind.), I min. 0.05 A, IP 40, W 17 x H 37 x D 13 mm
Electronic interval switch ZNI, with adjustable time intervals (0, 4, 8, 12, 24 hours) and run on times. Otherwise as ZNE.

ZNI
Ref. No. 0343

ZV
Ref. No. 1279



Electronic overrun timer, with stepless adjustable run on time (4-15 min.) and operation switch with on/off and run on time and continuous operation. Installation in 35 mm rail.
230 V / 1 ph. / 50/60 Hz,
I max. 2.1 A (ind.), IP 20
W 18 x H 93 x D 67 mm

ZT
Ref. No. 1277



Thermal electric overrun timer, run on time depends on the time the fan has been running, run on time approx. 2 to 12 min.
230 V / 1 ph. / 50/60 Hz,
I max. 4 A (ind.), IP 20
W 32 x H 40 x D 14 mm