

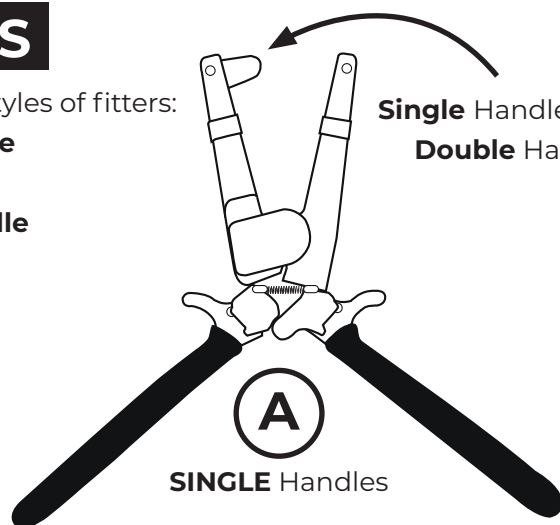
FITTERS

There are two styles of fitters:

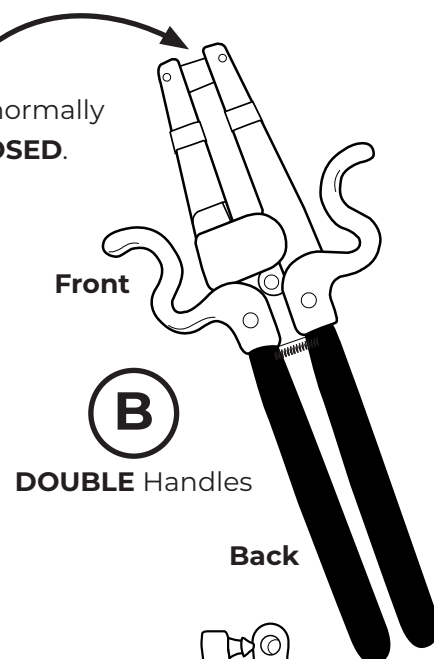
A: Single handle

OR

B: Double handle



Single Handles are **OPEN** normally
Double Handles are **CLOSED**.



CLIPS

There are 2 styles of Clips:

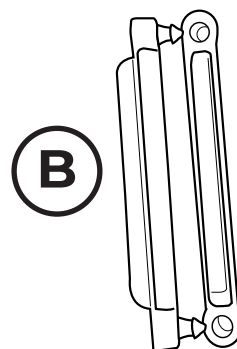
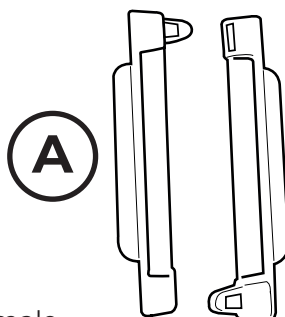
A: Singles

Separate clips are all identical, with male and female ends - fitted with male up v male down

OR

B: Twins

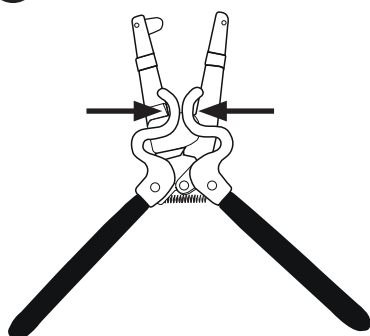
Clips halves are either double male or double female fixings and are connected for ease of loading. Load male side first then break off female and fit to other jaw.



LOADING CLIPS INTO FITTERS

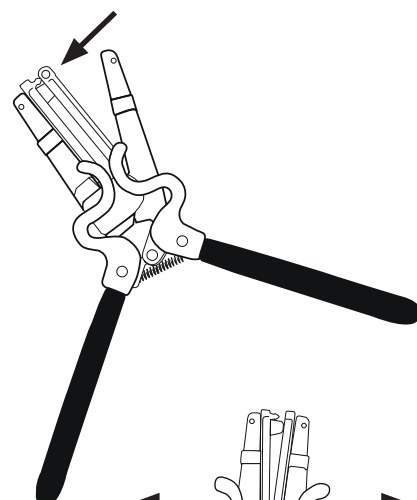
Double Handle Fitters

1 Use the **front** handles to open the fitter.

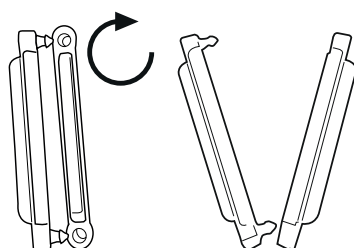


2 Push or slide the thick rib on the back of the male clip into the slot in the left jaw face.

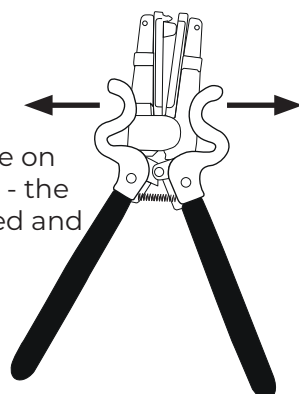
Ideally place the male clip on this side first.



3 With the clip secure in the left hand jaw, twist the attached clip with holes **45 degrees** so the rib on the back fits into the right hand slot.



4 Relax the pressure on the front handles - the fitter is now loaded and ready for use.

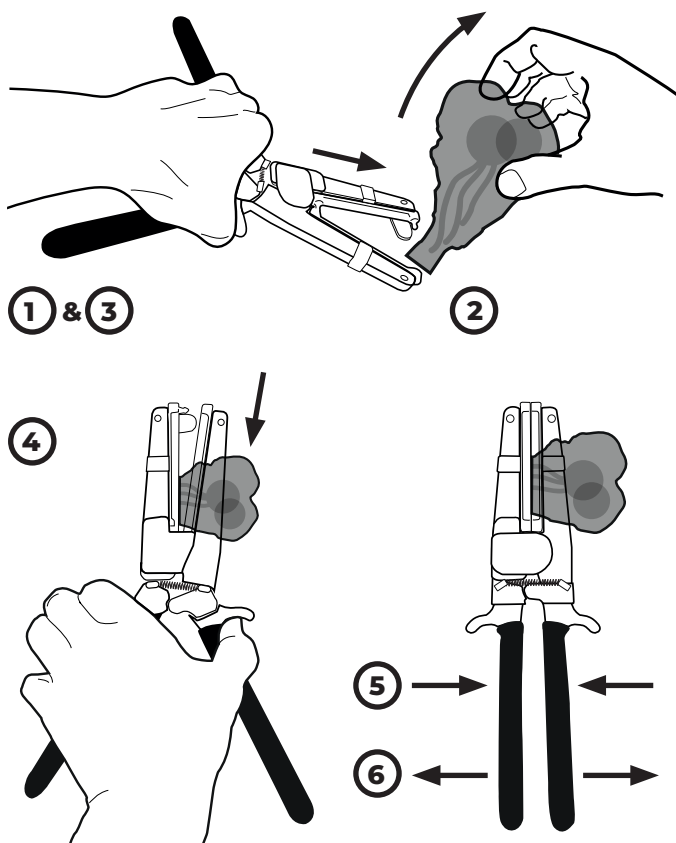
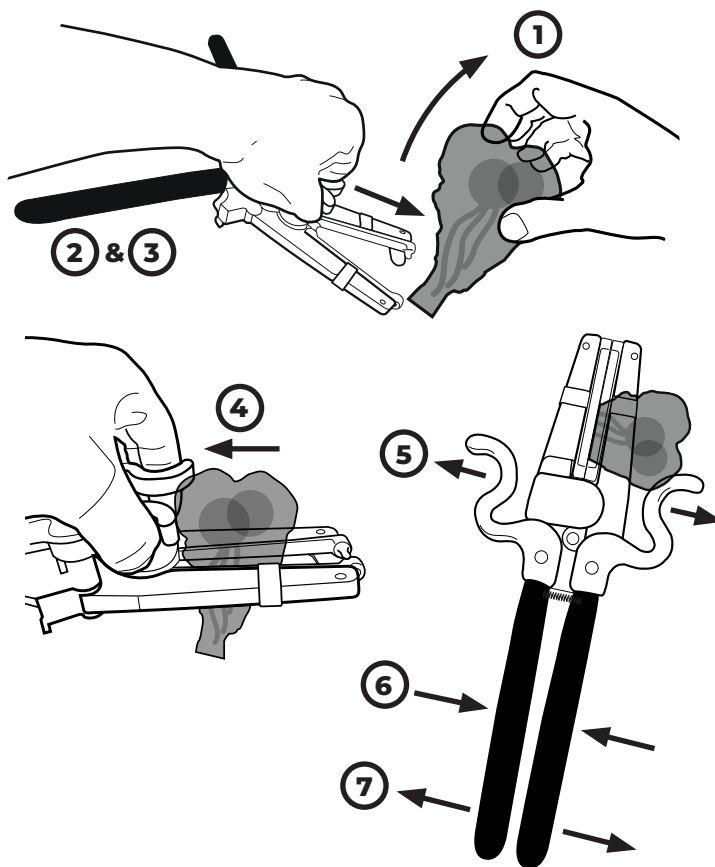


When using single clips always ensure to locate the pin of the clip in the left hand jaw at the top by the skin guard, place the hole on the second clip opposite it.

APPLYING CLIPS TO SCROTUM/TAILS

Double Fitter

1. With the balls raised (either by hand or using a nip safe device).
2. Use the front handles to open the fitter.
3. Approach from the side with jaws fully open as if like an aeroplane landing not helicopter landing.
4. Push the balls (still pulled up) all the way toward the V of the applicator. Ideally you should see some clear clip space beyond the scrotum.
5. Relax grip on front handles to close in the desired position.
6. Squeeze the back handles to close and lock the clips, you will feel the levers go over centre and the clips will be closed securely. Make sure the top pin is closed. **Keep an eye on this.**
7. Crack open the back handles then use front handles to fully open, gently shake and release the lamb.



Single Fitter

1. Be careful not to pre-lock the lower pin by closing the jaws too far.
2. With the balls raised (either by hand or using a nip safe device).
3. Approach from the side with jaws fully open as if like an aeroplane landing not helicopter landing.
4. Push the balls (still pulled up) all the way toward the V of the applicator. Ideally you should see some clear clip space beyond the scrotum.
5. Squeeze the black handles to close and lock the clips, you will feel the levers go over centre and the clips will be closed securely. Make sure the top pin is closed. **Keep an eye on this.**
6. Crack open the back handles, gently shake and release the lamb.

