



# Barley

*Martin Storey*

Image page 6

## SIZE

To fit chest (cm/in)

71-76	81-86	91-97	102-107	112-117	122-127	132-137	142-147	152-157
28-30	32-34	36-38	40-42	44-46	48-50	52-54	56-58	60-62

Actual chest measurement of garment

81.5	92.5	101.5	112.5	121.5	132.5	141.5	152.5	164.5
32	36½	40	44¼	47¾	52¼	55¾	60	64¾

## YARN

**Cotton Trio** (50gm)

6	7	8	9	10	11	12	13	13
---	---	---	---	----	----	----	----	----

(photographed in Fresh 114)

## NEEDLES

1 pair 2¾mm (no 12) (US 2) needles

1 pair 3¼mm (no 10) (US 3) needles

Cable needle

**BUTTONS** – 3 x TGB4775 (imitation horn 20mm) from Textile Garden. Please see information page for contact details.

## TENSION

26 sts and 34 rows to 10 cm measured over patt using 3¼mm (US 3) needles.



# Buffalo

*Lisa Richardson*

Image page 8

## SIZE

To fit chest (cm/in)

71-76	81-86	91-97	102-107	112-117	122-127	132-137	142-147	152-157
28-30	32-34	36-38	40-42	44-46	48-50	52-54	56-58	60-62
Actual chest measurement of garment								
80	90	100	110	120	130	140	150	161.5
31½	35½	39¼	43¼	47¼	51¼	55	59	63½

## YARN

**Cotton Trio** (50gm)

4	4	5	6	6	7	8	9	9
---	---	---	---	---	---	---	---	---

(photographed in Lime 116 and Teal 118)

## NEEDLES

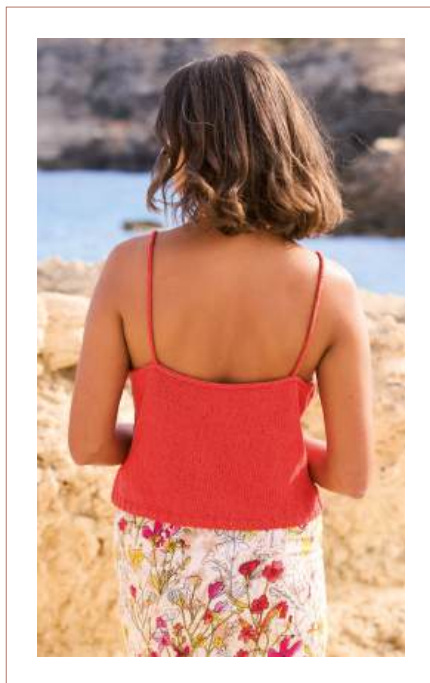
1 pair 3mm (no 11) (US 2/3) needles

1 pair 3¼mm (no 10) (US 3) needles

3mm (no 11) (US 2/3) circular needle no more than 50 cm long

## TENSION

24 sts and 34 rows to 10 cm measured over st st using 3¼mm (US 3) needles.



# Fountain

*Lisa Richardson*

Image page 10

## SIZE

To fit chest (cm/in)

71-76	81-86	91-97	102-107	112-117	122-127	132-137	142-147	152-157
28-30	32-34	36-38	40-42	44-46	48-50	52-54	56-58	60-62

Actual chest measurement of garment

80	90	100	110	120	130	140	150	161.5
31½	35½	39¼	43¼	47¼	51¼	55	59	63½

## YARN

**Cotton Trio** (50gm)

3	4	4	5	5	6	6	7	8
---	---	---	---	---	---	---	---	---

(photographed in Tiger 736 and Polar 111)

## NEEDLES

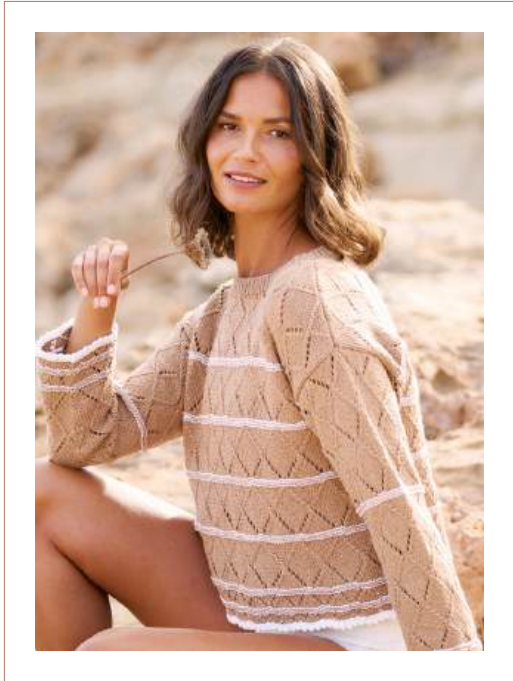
1 pair 3mm (no 11) (US 2/3) needles

1 pair 3¼mm (no 10) (US 3) needles

2 double-pointed 3mm (no 11) (US 2/3) needles

## TENSION

24 sts and 34 rows to 10 cm measured over st st using 3¼mm (US 3) needles. Lace panel (17 sts) measures 7.5 cm.



# Goose

*Chloe Thurlow*

Image page 12

## SIZE

To fit chest (cm/in)

71-76	81-86	91-97	102-107	112-117	122-127	132-137	142-147	152-157
28-30	32-34	36-38	40-42	44-46	48-50	52-54	56-58	60-62
Actual chest measurement of garment								
91	101	111	121	131	141	151	161	172.5
35¼	39¼	43¼	47¼	51½	55½	59½	63½	68

## YARN

**Cotton Trio** (50gm)

A Caramel 112

9 9 10 12 13 14 15 16 17

B Polar 111

1 2 2 2 2 2 2 2 2

## NEEDLES

1 pair 3¼mm (no 10) (US 3) needles

3mm (no 11) (US 2/3) circular needle no more than 40 cm long

Cable needle

## TENSION

24 sts and 36 rows to 10 cm measured over patt using 3¼mm (US 3) needles.



# Lawn

*Lisa Richardson*

Image page 14

## SIZE

To fit chest (cm/in)

71-76	81-86	91-97	102-107	112-117	122-127	132-137	142-147	152-157
28-30	32-34	36-38	40-42	44-46	48-50	52-54	56-58	60-62
Actual chest measurement of garment								
101	112	121	132	141	152	161	172	183.5
39¾	44	47¾	52	55½	59¾	63½	67¾	72¾

## YARN

**Cotton Trio** (50gm)

5	6	6	7	8	9	9	10	11
---	---	---	---	---	---	---	----	----

(photographed in Caramel 112)

## NEEDLES

1 pair 3mm (no 11) (US 2/3) needles

1 pair 3½mm (no 10/9) (US 4) needles

3mm (no 11) (US 2/3) circular needle no more than 40 cm long

## TENSION

18 sts and 22 rows to 10 cm measured over patt using 3½mm (US 4) needles.



# Pampas

*Georgia Farrell*

Image page 16

## SIZE

To fit chest (cm/in)

71-76	81-86	91-97	102-107	112-117	122-127	132-137	142-147	152-157
28-30	32-34	36-38	40-42	44-46	48-50	52-54	56-58	60-62
Actual chest measurement of garment								
82.5	92.5	102.5	112.5	122.5	132.5	142.5	152.5	162.5
32½	36½	40¼	44¼	48¼	52¼	56	60	64

## YARN

**Cotton Trio** (50gm)

5	5	6	7	8	8	9	10	11
---	---	---	---	---	---	---	----	----

(photographed in Deep 120)

## NEEDLES

1 pair 3¼mm (no 10) (US 3) needles

**Note:** For all sizes, you may prefer to use a circular needle for the main body section up to the armholes, working backwards and forwards in rows, not rounds.

**BUTTONS** – 3 x TGB4083 (brown wooden concave 15mm) from Textile Garden. Please see information page for contact details.

## TENSION

24 sts and 34 rows to 10cm measured over st st using 3¼mm (US 3) needles.



◆◆

## Rye

*Chloe Thurlow*

Image page 18

### **YARN**

**Cotton Trio** (50gm)

9

(photographed in Tiger 117)

### **NEEDLES**

1 pair 3¼mm (no 10) (US 3) needles

### **TENSION**

19 sts and 42 rows to 10 cm measured over patt using 3¼mm (US 3) needles.

### **FINISHED SIZE**

Completed wrap is 43 cm (17 in) wide and 171 cm (67¼ in) long.



# Switch

*Lisa Richardson*

Image page 20

## SIZE

To fit chest (cm/in)

71-76	81-86	91-97	102-107	112-117	122-127	132-137	142-147	152-157
28-30	32-34	36-38	40-42	44-46	48-50	52-54	56-58	60-62

Actual chest measurement of garment

89	99	109	119	129	139	149	159	173
35	39	43	46¾	50¾	54¾	58¾	62½	68

## YARN

**Cotton Trio** (50gm)

5	6	7	8	9	10	12	13	15
---	---	---	---	---	----	----	----	----

(photographed in Charcoal 119)

## NEEDLES

1 pair 3mm (no 11) (US 2/3) needles

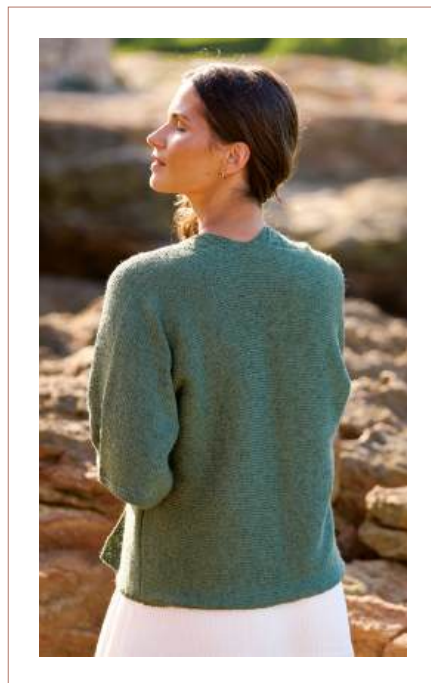
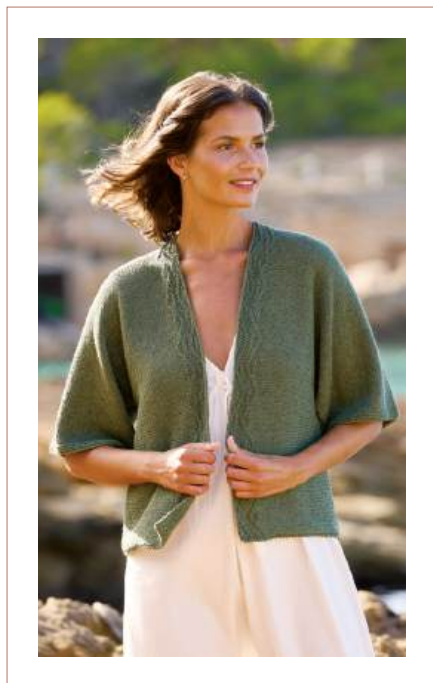
1 pair 3¼mm (no 10) (US 3) needles

3mm (no 11) (US 2/3) circular needle no more than 80 cm long

2 double-pointed 3mm (no 11) (US 2/3) needles

## TENSION

20 sts and 36 rows to 10 cm measured over patt using 3¼mm (US 3) needles.



## Vetiver

*Lisa Richardson*

Image page 22

### SIZE

To fit chest (cm/in)

71-76	81-86	91-97	102-107	112-117	122-127	132-137	142-147	152-157
28-30	32-34	36-38	40-42	44-46	48-50	52-54	56-58	60-62

Actual chest measurement of garment

98	108	118	128	138	148	158	168	180
38½	42½	46½	50½	54¼	58¼	62¼	66¼	70¼

### YARN

**Cotton Trio** (50gm)

9	10	11	12	13	14	15	17	18
---	----	----	----	----	----	----	----	----

(photographed in Leaf 115)

### NEEDLES

1 pair 3mm (no 11) (US 2/3) needles

1 pair 3¼mm (no 10) (US 3) needles

3¼mm (no 10) (US 3) circular needle at least 100 [100: 100: 110: 110:

110: 120: 120: 120] cm long

**EXTRAS** – small amount of waste yarn

### TENSION

24 sts and 34 rows to 10 cm measured over st st using 3¼mm (US 3) needles.



# Wheat

*Martin Storey*

Image page 24

## SIZE

To fit chest (cm/in)

71-76	81-86	91-97	102-107	112-117	122-127	132-137	142-147	152-157
28-30	32-34	36-38	40-42	44-46	48-50	52-54	56-58	60-62

Actual chest measurement of garment

90	100	110	120	130	140	150	160	171.5
35½	39¼	43¼	47¼	51¼	55	59	63	67½

## YARN

**Cotton Trio** (50gm)

11	12	13	15	16	17	18	20	21
----	----	----	----	----	----	----	----	----

(photographed in Charcoal 119)

## NEEDLES

1 pair 2¼mm (no 12) (US 2) needles

1 pair 3¼mm (no 10) (US 3) needles

2¼mm (no 12) (US 2) circular needle at least 150 cm long

## TENSION

24 sts and 34 rows to 10 cm measured over st st using 3¼mm (US 3) needles.