



3

# Bargello

Image Page 06

## SIZE

To fit chest (cm/in)

71-76	81-86	91-97	102-107	112-117	122-127	132-137	142-147	152-157
28-30	32-34	36-38	40-42	44-46	48-50	52-54	56-58	60-62

Actual chest measurement of garment

114.5	124	134.5	144	154.5	164	174.5	184	196
45	48¾	53	56¾	60¾	64½	68¾	72½	77¼

## YARN

**Felted Tweed** (50gm)

A Daffodil K0012

1	1	1	2	2	2	2	2	2
---	---	---	---	---	---	---	---	---

B Fuchsia K0011

1	1	1	1	2	2	2	2	2
---	---	---	---	---	---	---	---	---

C Marigold K0013

1	1	1	1	1	2	2	2	2
---	---	---	---	---	---	---	---	---

D Delight K0010

1	1	1	2	2	2	2	2	2
---	---	---	---	---	---	---	---	---

E Regal K0015

1	2	2	2	2	2	2	2	2
---	---	---	---	---	---	---	---	---

F Apple K0014

2	2	2	2	2	2	2	2	3
---	---	---	---	---	---	---	---	---

G Cucumber K0016

2	2	2	2	3	3	3	3	3
---	---	---	---	---	---	---	---	---

## NEEDLES

1 pair 3¼mm (no 10) (US 3) needles

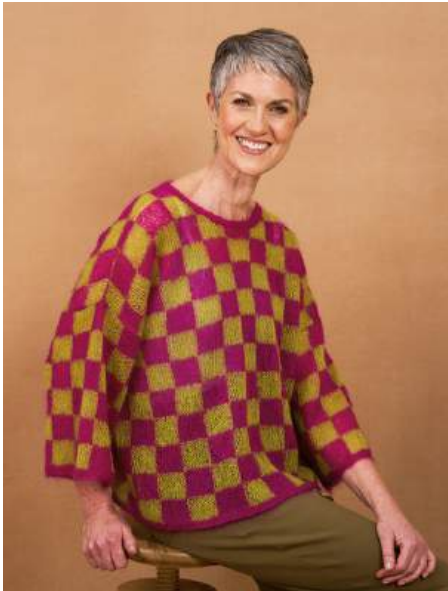
1 pair 4mm (no 8) (US 6) needles

3¼mm (no 10) (US 3) circular needle no more than 40 cm long

4mm (no 8) (US 6) circular needle at least 120 cm long

## TENSION

22 sts and 30 rows to 10 cm measured over patterned st st using 4mm (US 6) needles.



3

# Battenberg

Image Page 08

## SIZE

To fit chest (cm/in)

71-76    81-97    102-117    122-137    142-157

28-30    32-38    40-46    48-54    56-62

Actual chest measurement of garment

105.5    125.5    145.5    165.5    188

41½    49½    57¼    65¼    74

## YARN

**Kidsilk Haze** (25gm)

A Petunia K0011

2    3    3    4    4

B Lichen K0016

2    3    3    3    4

## NEEDLES

1 pair 4mm (no 8) (US 6) needles

1 pair 5mm (no 6) (US 8) needles

## TENSION

18 sts and 23 rows to 10 cm measured over st st using 5mm (US 8) needles.



3

## Boldweave

Image Page 10

### YARN

#### Kidsilk Haze (25gm)

A Violet K0015	2
B Lichen K0016	1
C Meringue K0012	1
D Celery K0014	1
E Blancmange K0010	1
F Tangerine K0013	1
G Petunia K0011	1

### NEEDLES

1 pair 5mm (no 6) (US 8) needles

### TENSION

18 sts and 23 rows to 10 cm measured over st st using 5mm (US 8) needles.

### FINISHED SIZE

Completed stole is 62 cm (24½ in) wide and 201.5 cm (79¼ in) long.



3

# Checker

Image Page 12

## SIZE

To fit chest (cm/in)

71-86 91-107 112-127 132-137 142-157

28-34 36-42 44-50 52-54 56-62

Actual chest measurement of garment

91 109 127.5 145.5 163.5

35¾ 43 50¾ 57¾ 64¾

## YARN

**Felted Tweed** (50gm)

A Regal K0015

4 5 6 6 7

B Daffodil K0012

4 4 5 5 6

## NEEDLES

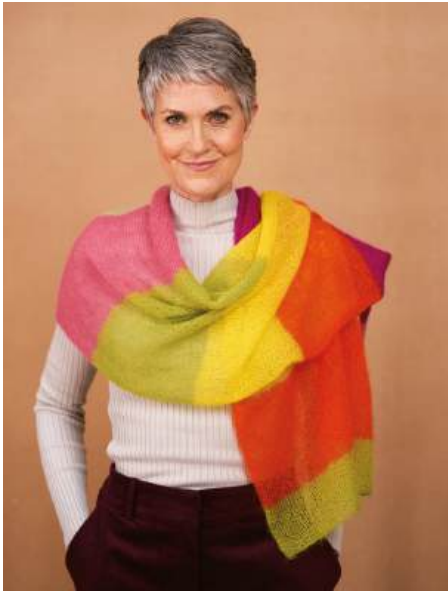
1 pair 3¾mm (no 10) (US 3) needles

1 pair 4mm (no 8) (US 6) needles

**EXTRAS** – 3 chunky hook and eye fasteners

## TENSION

22 sts and 30 rows to 10 cm measured over st st using 4mm (US 6) needles.



1

*Joseph*

Image Page 14

#### **YARN**

**Kidsilk Haze** (25gm)

A Lichen K0016	1
B Tangerine K0013	1
C Meringue K0012	1
D Petunia K0011	1
E Celery K0014	1
F Blancmange K0010	1

#### **NEEDLES**

1 pair 5mm (no 6) (US 8) needles

#### **TENSION**

18 sts and 23 rows to 10 cm measured over st st using 5mm (US 8) needles.

#### **FINISHED SIZE**

Completed scarf is 45 cm (17¾ in) wide and 173 cm (68 in) long.



3

# Optical

Image Page 16

## SIZE

To fit chest (cm/in)

71-76	81-86	91-97	102-107	112-117	122-127	132-137	142-147	152-157
28-30	32-34	36-38	40-42	44-46	48-50	52-54	56-58	60-62

Actual chest measurement of garment

85.5	96.5	105.5	116.5	125.5	136.5	145.5	156.5	167.5
33¾	38	41½	45¾	49½	53¾	57¼	61½	66

## YARN

**Felted Tweed** (50gm)

A Fuchsia K0011

2	2	2	3	3	3	3	4	4
---	---	---	---	---	---	---	---	---

B Daffodil K0012

1	1	1	1	2	2	2	2	2
---	---	---	---	---	---	---	---	---

C Marigold K0013

1	1	2	2	2	2	2	2	2
---	---	---	---	---	---	---	---	---

## NEEDLES

1 pair 3¾mm (no 10) (US 3) needles

1 pair 4mm (no 8) (US 6) needles

3¾mm (no 10) (US 3) circular needle no more than 40 cm long

## TENSION

22 sts and 30 rows to 10 cm measured over patterned st st using 4mm (US 6) needles.



2

# Stripes Galore

Image Page 18

## SIZE

To fit chest (cm/in)

71-76	81-86	91-97	102-107	112-117	122-127	132-137	142-147	152-157
28-30	32-34	36-38	40-42	44-46	48-50	52-54	56-58	60-62

Actual chest measurement of garment

87.5	98	107.5	118	127.5	138	147.5	158	171
34½	38½	42¼	46½	50¾	54¼	58	62¾	67¼

## YARN

**Felted Tweed** (50gm)

A Regal K0015

2	2	3	3	3	3	3	4	4
---	---	---	---	---	---	---	---	---

B Daffodil K0012

1	1	1	1	1	2	2	2	2
---	---	---	---	---	---	---	---	---

C Fuchsia K0011

1	1	1	1	1	2	2	2	2
---	---	---	---	---	---	---	---	---

D Cucumber K0016

1	1	1	1	1	1	1	1	1
---	---	---	---	---	---	---	---	---

E Apple K0014

1	1	1	1	1	1	1	1	2
---	---	---	---	---	---	---	---	---

F Marigold K0013

1	1	1	1	2	2	2	2	2
---	---	---	---	---	---	---	---	---

G Delight K0010

2	2	2	2	2	2	2	3	3
---	---	---	---	---	---	---	---	---

## NEEDLES

1 pair 3¼mm (no 10) (US 3) needles

1 pair 4mm (no 8) (US 6) needles

3¼mm (no 10) (US 3) circular needle no more than 40 cm long

## TENSION

22 sts and 30 rows to 10 cm measured over st st using 4mm (US 6) needles.



1

# Winter Sunset

Image Page 20

## YARN

**Kidsilk Haze** (25gm) and **Felted Tweed** (50gm)

A FTwd Delight K0010	1
B KSH Blancmange K0010	1
C KSH Tangerine K0013	1
D KSH Celery K0014	1
E FTwd Apple K0014	1
F KSH Meringue K0012	1
G FTwd Daffodil K0012	1
H FTwd Marigold K0013	1
I KSH Lichen K0016	1
J KSH Violet K0015	1
K KSH Petunia K0011	1
L FTwd Fuchsia K0011	1
M FTwd Regal K0015	1
N FTwd Cucumber K0016	1

## NEEDLES

1 pair 3¼mm (no 10) (US 3) needles

1 pair 4mm (no 8) (US 6) needles

## TENSION

22 sts and 30 rows to 10 cm measured over st st using 4mm (US 6) needles.

## FINISHED SIZE

Completed wrap is 48 cm (19 in) wide and 167.5 cm (66 in) long.