

# Fortex Naturele Cladding



Looks  
like  
wood

Fortex Nature Cladding is a V-Groove style cladding with the natural look of wood.

### **Innovative Technology**

This innovative product is manufactured using state of the art digital printing technology creating a façade that is hard to distinguish from real wood.

### **Authentic Wood Finishes**

- A beautiful range of authentic looking wood finishes of both traditional and contemporary grains imposed on to Freefoam's foam PVC cladding boards.
- A choice of six wood decors.

### **Ultra Low Maintenance**

Get the look of wood without the ongoing, time consuming cost of regular upkeep. Perfect for any new build house or home improvement project.

### **Easy to fit**

- Lighter and easier to handle than alternative solutions.
- Boards slot together with tongue and groove fixing.
- Can be installed horizontally, vertically or diagonally.

### **Range of finishing trims**

- A complete set of aluminium finishing trims available in a range of colours that perfectly complement the six cladding decors.
- RAL number referenced for accurate matching to other building elements.

### **Guarantee**

Fortex Natura is backed by a limited warranty of 10 years.

### **Sustainable Product**

Fortex Natura cladding is 100% recyclable.



# Fortex Naturale Colour Range



Malted Oak



Grey Cedar



Barnwood Oak



Siberian Larch



Greyed Oak

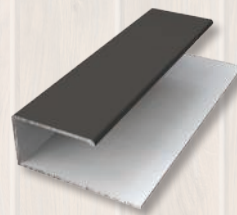


Aged Padauk



## Aluminium Trim Range

Colour matched aluminium finishing trims with RAL numbers.



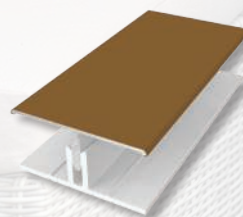
### J Trim

FCA3023N1AP  
Aged Padauk  
RAL No. 7022M



### 2 Part External Corner Trim

FCA3043NIBO  
Barnwood Oak  
RAL No. 1019M



### 2 Part H Trim

FCA3153NIMO  
Malted Oak  
RAL No. 8008M



### Cover Trim

FCA3163NIGC  
Grey Cedar  
RAL No. 7023M

## Trim Colours



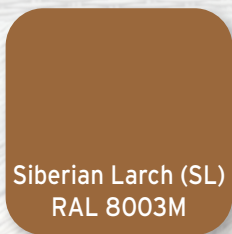
Malted Oak (MO)  
RAL 8008M



Grey Cedar (GC)  
RAL 7023M



Barnwood Oak (BO)  
RAL 1019M



Siberian Larch (SL)  
RAL 8003M



Greyed Oak (GYO)  
RAL 7006M



Aged Padauk (AP)  
RAL 7022M

For accurate colour representation, refer to a RAL swatch or request a sample.

# Fortex Naturele Technical Information

## DENSITY AND WEIGHT

Density: 460kg/m<sup>3</sup>

Weight per board: 3.5kg

Weight m<sup>2</sup>: 4.67kg

## DIMENSIONS

Length: 5m

Thickness with leg: 15mm

Board Thickness: 9mm

Pack Coverage: 3m<sup>2</sup>

Pack Contents: 4

Coverage per board length: 0.75m<sup>2</sup>

## IMPACT

Fortex Natura tested to EN13245-2 standards

## UV RESISTANCE

Fortex Natura conforms to EN ISO 4892

## EXPANSION

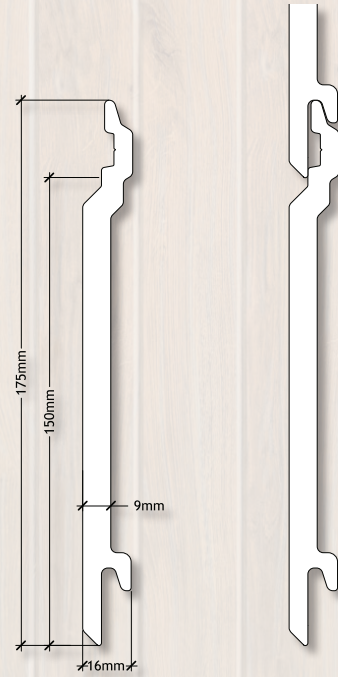
Thermal expansion 5 x 10/°C

## FIRE RATING

Fire classification D -s3,d2 AVM/AHM

## MATERIAL

PVC-UE Core/Skin, ink, varnish



Code	Description	Unit	Units per pack	Grey	Malted Oak MO Ral No. 8008M	Grey Cedar GC Ral No. 7023M	Barnwood Oak BO Ral No. 1019M	Siberian Larch SL Ral No. 8003M	Greyed Oak GYO Ral No. 7006M	Aged Padauk AP Ral No. 7022M
FCV150N1	150mm Fortex Natura	5m	4		●	●	●	●	●	●
FCA3023N1	J Trim	3m	2		●	●	●	●	●	●
FCA3043N1	2 Part External Corner Trim	3m	2		●	●	●	●	●	●
FCA3153N1	2 Part H Trim	3m	2		●	●	●	●	●	●
FCA3163N1	Cover Trim for Ventilated Starter Trim	3m	2		●	●	●	●	●	●
FC3123	25mm Multi Vented Starter Trim	3m	5	●						
FCA3063	Drip Trim	3m	1	●						
ACSS250	Cladding Screws	30mm	250							

All specifications, dimensions, descriptions and illustrations contained in any Freefoam sales literature, quotation or pricelist or other advertisement matter are intended merely to present a general idea of the goods we sell. We reserve the right from time to time to make changes which are required to comply with any applicable safety or statutory requirements which do not materially affect the quality or fitness for purpose of the goods you purchase from us.



77-83 St James Mill Road  
Northampton NN5 5JP  
T: 0800 002 9903

Central Commercial Park  
Centre Park Road, Cork T12 KC96  
T: 021 496 6311

E: [info@freefoam.com](mailto:info@freefoam.com) • [www.freefoam.com](http://www.freefoam.com)