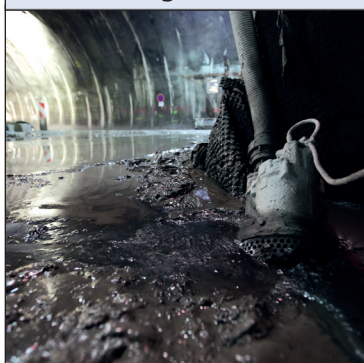


**KTV**

3 PHASE

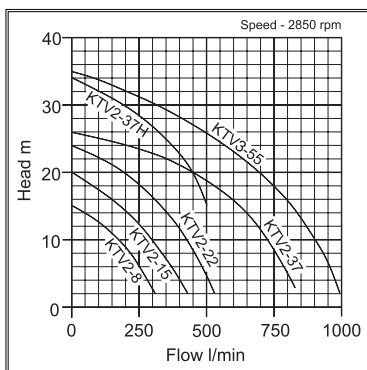


- Mines & quarries
- Construction
- Hire fleets
- Tunnelling
- Industry
- Processing



The **KTV** drainage pumps are lightweight, yet heavy-duty and offer excellent wear resistance for maximum durability and minimum maintenance even during prolonged operation in the severest conditions. With lightweight, cast aluminium motor bodies and pressed steel strainers these pumps are truly portable. Fitted with vortex impellers, in ductile iron (urethane on 0.75kW models) and rubber pump chambers, they give outstanding wear resistance in applications with high sand and silt content. The heavy duty motors are fitted with internal overloads, enabling simple installation and direct connection to the power supply. The 420 (0.75kW)/ 403 (>1.5kW) stainless steel shafts are fitted with ultra hardwearing double mechanical seals (inboard: silicon carbide-silicon carbide) which run in an oil chamber that has an oil lifter for positive seal lubrication during operation in any position. This feature, combined with the water and air cooling channel to the top outlet, enables these pumps to operate for extended periods in little or no water. Maintenance is straightforward, with the simple replacement of wearing parts without the need for a workshop or even special tools.

All models are supplied with 20 metres of heavy duty rubber power cable, except the 0.75kW models which are supplied with 10 metres. All models are supplied with a threaded outlet and a hose connector. IDS (individually screened cable) is available, at an extra cost, on 3.7kW and 5.5kW models, for quarry and mining applications.



**KTV2-8**



**KTV2-37**

item code	model	Manual or Auto	outlet (BSPM & mm)	kW	volt	flow (l/min)	head (mtrs)	free passage (mm)	dia x h (mm)	dry weight (kgs)	Price (£)	code
10-10-1167	KTV2-8	M	2" & 50	0.75	400	320	15	6	Ø200x369	11.50	766.00	1
10-10-1236	KTV2-15	M	2" & 50	1.5	400	425	20	8.5	Ø240x396	19.50	1,400.00	1
10-10-1029	KTV2-22	M	2" & 50	2.2	400	525	24	8.5	Ø240x416	23.00	1,494.00	1
10-10-1134	KTV2-37	M	3" & 80	3.7	400	830	26	8.5	Ø285x510	34.00	2,181.00	1
10-10-1200	KTV2-37H	M	2" & 50	3.7	400	500	34	8.5	Ø285x510	34.00	2,181.00	1
10-10-1137	KTV3-55	M	3" & 80	5.5	400	980	35	8.5	Ø300x545	46.50	2,540.00	1