

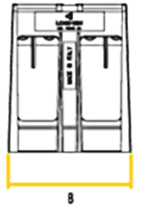
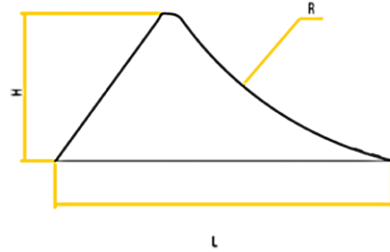
# WHEEL CHOCKS

DIN76051 



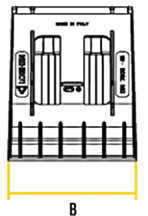
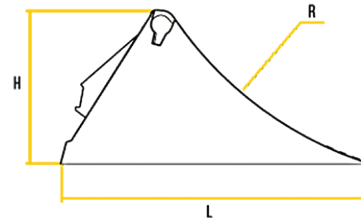
# HOMOLOGATED THERMOPLASTIC CHOCK

DIN76051-G36



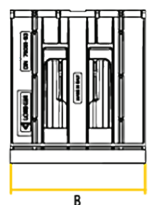
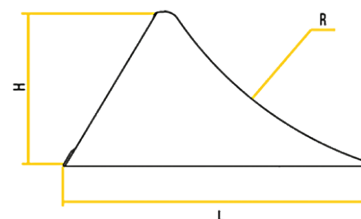
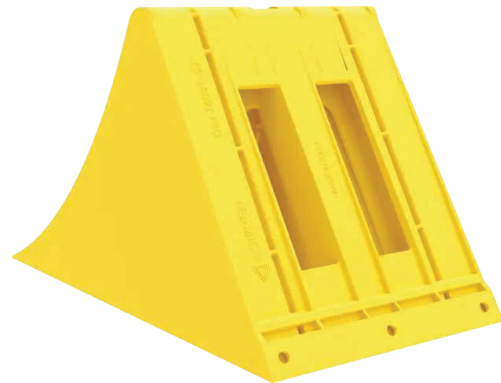
Code	Colour	Dimensions mm				Weight kg
		L	B	H	R	
LKE36-S	Yellow	332	125	150	355	0.54
LKE36-NS	Yellow	332	125	150	355	0.44

DIN76051-G46



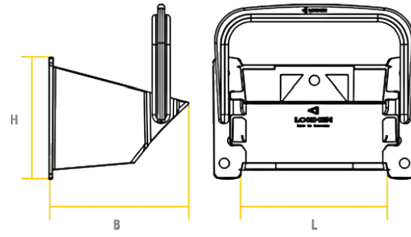
Code	Colour	Dimensions mm				Weight kg
		L	B	H	R	
LKG46-S	Yellow	383	193	160	460	0.84
LKG46-NS	Yellow	383	193	160	460	0.73

DIN76051-G53



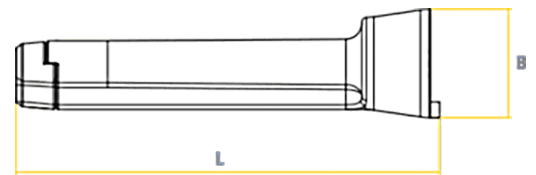
Code	Colour	Dimensions mm				Weight kg
		L	B	H	R	
LKE53-S	Yellow	467	225	198	555	1.40
LKE53-NS	Yellow	467	225	198	555	1.25

## PLASTIC CHOCK HOLDER



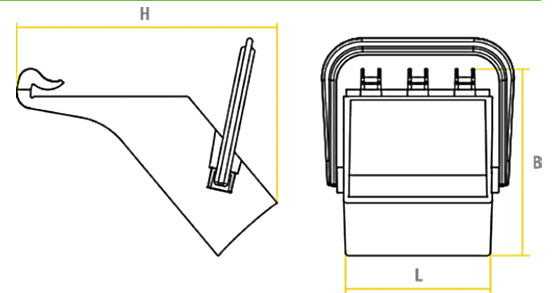
Code	Dimensions mm			Weight kg	
	L	B	H		
LKE36-HOLD	133	124	109	E36	0.17
LKG46-HOLD	184	194	128	G46	0.40
LKE53-HOLD	213	183	137	E53	0.40

## PLASTIC FIXING SUPPORT FOR WHEEL CHOCKS (G46 & E53)



Code	Dimensions mm		Weight kg	
	L	B		
LKG46HOLD-PP	215	55	G46	0.16
LKE53HOLD-PP	258	55	E53	0.18

## PLASTIC CHOCK E53 HOLDER 130° RAPID CHASSIS-FITTING



Code	Dimensions mm			Weight kg	
	L	B	H		
LKE53HOLD-130	235	200	260		1.24

## ZINC PLATED FIXING SUPPORT WITH SCREW FOR PLASTIC CHOCK

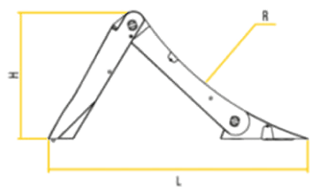
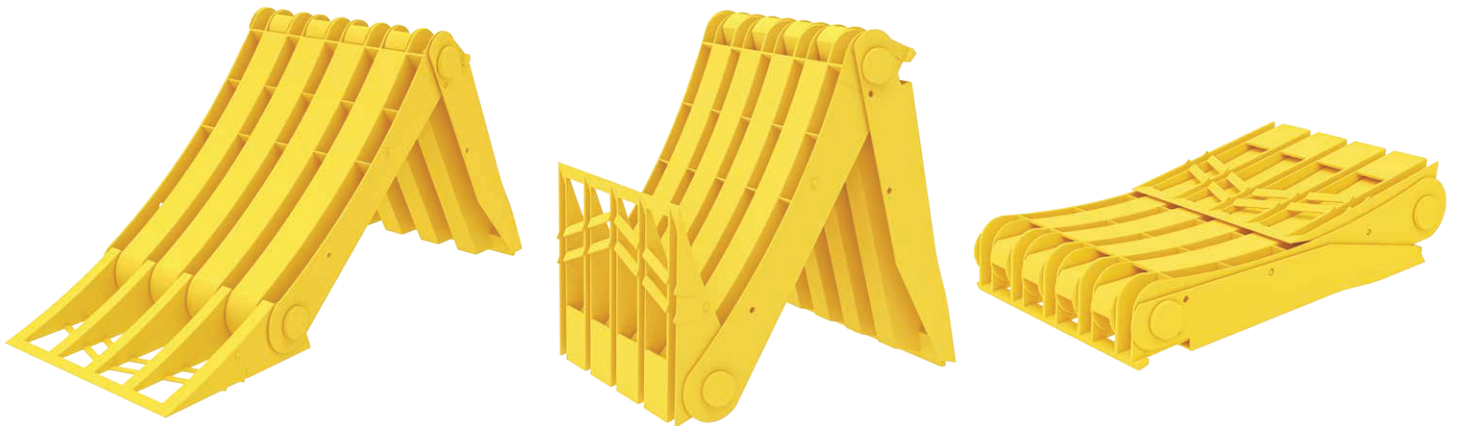


Code	Dimensions mm		Weight kg	
	L	Ø		
LKE53HOLD-ZP	250	21	E53	0.42

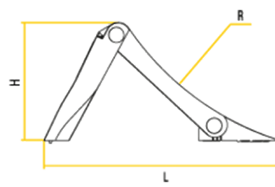
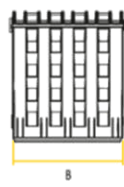
# FOLDING WHEEL CHOCKS - ORIGAMY SERIES

Foldable - Space-saving - Maximum installation flexibility - Resistant and durable - 3 Size Options

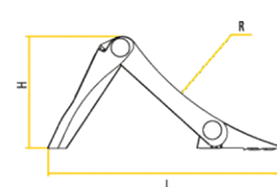
- Foldable, as its three sections can be folded back on themselves to a height of only 6.3 cm.
- Space-saving, as it optimises space up to 66% compared to solid wheel chocks.
- Maximum installation flexibility, it can be attached to the truck or trailer chassis, or placed in the truck's toolbox.
- Resistant and durable thanks to the use of high-grade PP and its functional design.
- National, European and international registered design.
- Patented, TÜV-certified and DIN 76051 compliant.



ORIGAMY 53  
Truck & Trailers



ORIGAMY 46  
Truck & Trailers  
(Commercial and Agricultural)



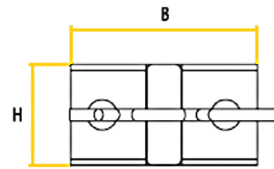
ORIGAMY 36  
LCV



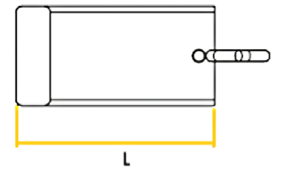
Code	L mm	B mm	H mm	R mm	Weight kg
LKOR53-S	472	199	230	560	0.98
LKOR46-S	360	160	190	460	0.67
LKOR36-S	320	120	151	360	0.32

# FOLDING WHEEL CHOCK HOLDERS - ALOK TYPE

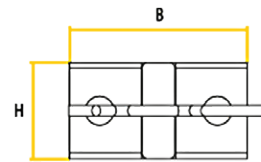
Aluminium Alok Holder for single chock



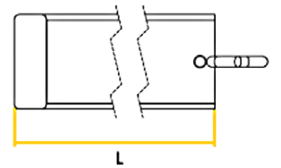
LKOR53-ALOK1



Aluminium Alok Holder for two chocks



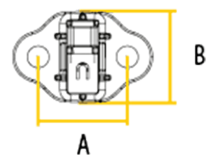
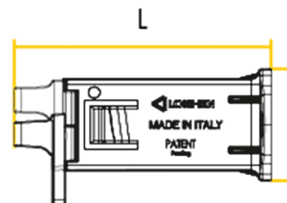
LKOR53-ALOK2



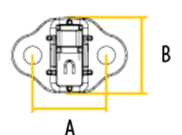
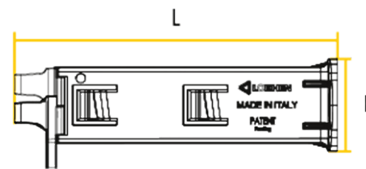
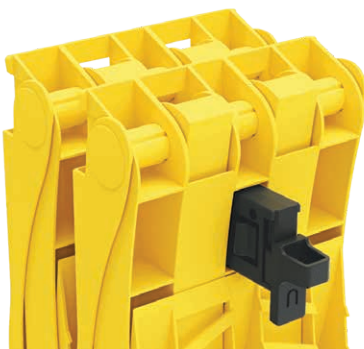
Code	Dimensions mm			Weight kg
	L	B	H	
LKOR53-ALOK1	69	65	35	0.16
LKOR53-ALOK2	124	65	35	0.23

# FOLDING WHEEL PLASTIC CHOCK HOLDERS - ALOK TYPE

Plastic Alok Holder for single chock



Plastic Alok Holder for double chock



Code	L mm	B mm	H mm
LKOR36-BEAM1	102	68	44
LKOR36-BEAM2	155	68	44
LKOR46-BEAM1	103	68	44
LKOR46-BEAM2	163	68	44
LKOR53-BEAM1	107	68	44
LKOR53-BEAM2	177	68	44

# FOLDING WHEEL CHOCK HOLDERS - BOX TYPE

Magnelis Box Holder for two chocks



Code	Type	Dimensions mm			Weight kg
		L	B	H	
LKOR53-BOX	Magnelis Holder	314	x 166	x 235	1.54

