

# Adaptor Couplings

- Provides a quick and efficient method of connecting pipes of different materials and outside diameters
- Reliable, tried and tested products
- Large variety of sizes for a multitude of pipe configurations



CE  
05

Fernco Adaptor Couplings, sometimes referred to as reducer couplings, are designed to connect unadopted drainage pipes with different outside diameters – connecting larger drainage pipes to smaller drainage pipes and vice versa.

Adaptor Couplings are made from three component parts: one stepped moulded EPDM rubber body with two different diameters on each side and two stainless steel clamp bands, which when tightened create a secure connection.

These simple yet effective connectors can be tightened onto pipes using a nut driver and torque wrench, creating a permanent airtight and watertight seal in just seconds.



Fit horizontally or vertically

for above or below ground applications

Strong stainless steel clamp bands



High quality EPDM coupling body

|                    |  |
|--------------------|--|
| Product Code       | ACXXXX   |
| Description        | Fernco Adaptor Coupling  |
| Size Range         | 53-420   |
| Material           | EPDM Rubber<br>1.4301 (304) Stainless Steel<br><i>Couplings with a different material makeup are available on request.</i> |
| Pressure Rating    | 0.6bar, 8.70psi  |
| Jetting Resistance | 180bar   |
| Temperature Range  | -50°C to 80°C constant,<br>100°C intermittent  |
| Tightening Torque  | AC633 - AC2756 - 6Nm<br>AC9001 – AC4209 - 13Nm   |
| Standards          | BS EN 681-1:1996<br>BS EN 295-4:2013<br>BS EN 10088-2:1995   |

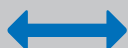
| Product Code | Size Range A (mm) | Size Range B (mm) | Tightening Torque |
|--------------|-------------------|-------------------|-------------------|
| AC633        | 53 - 63           | 40 - 50           | 6Nm               |
| AC894        | 75 - 89           | 53 - 63           | 6Nm               |
| AC1155       | 100 - 115         | 75 - 90           | 6Nm               |
| AC1201       | 105 - 120         | 35 - 45           | 6Nm               |
| AC1225       | 110 - 122         | 48 - 56           | 6Nm               |
| AC1226       | 110 - 122         | 60 - 68           | 6Nm               |
| AC1221       | 110 - 122         | 80 - 95           | 6Nm               |
| AC5144       | 110 - 125         | 100 - 115         | 6Nm               |
| AC1361       | 121 - 136         | 80 - 95           | 6Nm               |
| AC1362       | 121 - 136         | 100 - 115         | 6Nm               |
| AC4000       | 121 - 136         | 110 - 121         | 6Nm               |
| AC1452       | 130 - 145         | 110 - 125         | 6Nm               |
| AC1552       | 140 - 155         | 90 - 105          | 6Nm               |
| AC1602       | 144 - 160         | 110 - 122         | 6Nm               |
| AC1603       | 144 - 160         | 121 - 136         | 6Nm               |
| AC1702       | 155 - 170         | 110 - 125         | 6Nm               |
| AC1703       | 155 - 170         | 130 - 145         | 6Nm               |
| AC1922       | 170 - 192         | 110 - 122         | 6Nm               |
| AC1923       | 170 - 192         | 121 - 136         | 6Nm               |
| AC1924       | 170 - 192         | 144 - 160         | 6Nm               |
| AC2000       | 180 - 200         | 130 - 145         | 6Nm               |
| AC6001       | 180 - 200         | 144 - 160         | 6Nm               |
| AC2001       | 180 - 200         | 155 - 170         | 6Nm               |
| AC6000       | 180 - 200         | 160 - 180         | 6Nm               |
| AC2100       | 185 - 210         | 100 - 115         | 6Nm               |
| AC2101       | 185 - 210         | 160 - 180         | 6Nm               |
| AC2152o/s    | 195 - 215         | 100 - 115         | 6Nm               |
| AC3108W      | 285 - 310         | 240 - 265         | 6Nm               |
| AC2154       | 190 - 215         | 150 - 165         | 6Nm               |
| AC2254       | 200 - 225         | 160 - 175         | 6Nm               |
| AC2352       | 210 - 235         | 110 - 122         | 6Nm               |
| AC2353       | 210 - 235         | 121 - 136         | 6Nm               |
| AC2354       | 210 - 235         | 144 - 160         | 6Nm               |
| AC2355       | 210 - 235         | 170 - 192         | 6Nm               |
| AC2356       | 210 - 235         | 190 - 215         | 6Nm               |
| AC2654       | 240 - 265         | 144 - 160         | 6Nm               |
| AC2655       | 240 - 265         | 170 - 192         | 6Nm               |
| AC2656       | 240 - 265         | 190 - 215         | 6Nm               |
| AC2657       | 240 - 265         | 210 - 235         | 6Nm               |
| AC2754       | 250 - 275         | 160 - 175         | 6Nm               |
| AC2756       | 250 - 275         | 200 - 225         | 6Nm               |
| AC9001       | 260 - 285         | 180 - 205         | 13Nm              |
| AC2904       | 265 - 290         | 144 - 160         | 13Nm              |
| AC2907       | 265 - 290         | 210 - 235         | 13Nm              |
| AC2908       | 265 - 290         | 235 - 260         | 13Nm              |
| AC2956o/s    | 270 - 295         | 185 - 210         | 13Nm              |
| AC3204       | 295 - 320         | 144 - 160         | 13Nm              |
| AC3205       | 295 - 320         | 170 - 192         | 13Nm              |
| AC3207       | 295 - 320         | 210 - 235         | 13Nm              |
| AC3208       | 295 - 320         | 240 - 265         | 13Nm              |
| AC3209       | 295 - 320         | 265 - 290         | 13Nm              |
| AC3351o/s    | 310 - 335         | 180 - 205         | 13Nm              |
| AC3608       | 335 - 360         | 240 - 265         | 13Nm              |
| AC3609       | 335 - 360         | 265 - 290         | 13Nm              |
| AC3600       | 335 - 360         | 295 - 320         | 13Nm              |
| AC3858       | 360 - 385         | 240 - 265         | 13Nm              |
| AC3850       | 360 - 385         | 300 - 325         | 13Nm              |
| AC4208       | 395 - 420         | 240 - 265         | 13Nm              |
| AC4209       | 395 - 420         | 265 - 290         | 13Nm              |

# Connecting UltraRib to Clay



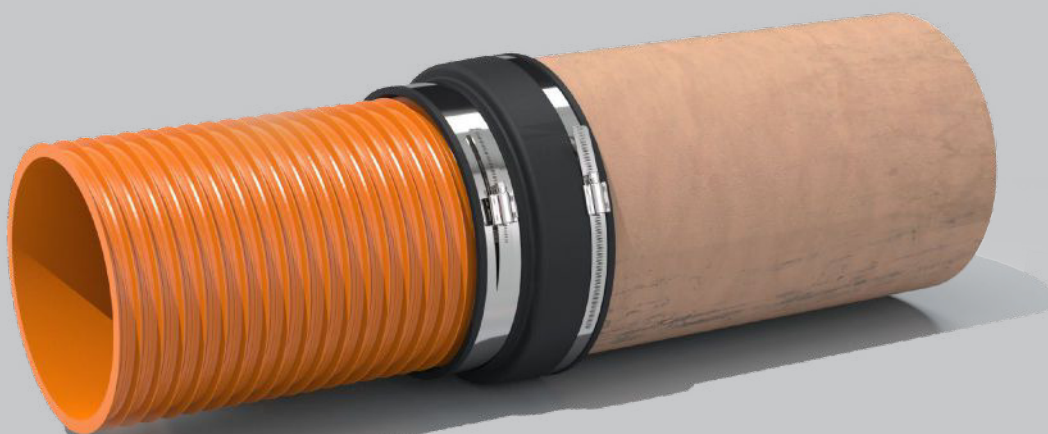
|                    |  |
|--------------------|--|
| Product Code       | ARXXXX   |
| Description        | Fernco AR Adaptor Coupling   |
| Size Range         | 170 - 385  |
| Material           | EPDM Rubber<br>1.4301 (304) Stainless Steel<br><i>Couplings with a different material makeup are available on request.</i> |
| Pressure Rating    | 0.6bar, 8.70psi  |
| Jetting Resistance | 180bar   |
| Temperature Range  | -50°C to 80°C constant,<br>100°C intermittent  |
| Tightening Torque  | 6Nm / 13Nm   |
| Standards          | BS EN 681-1:1996<br>BS EN 295-4:2013<br>BS EN 10088-2:1995   |

| Product Code | Size Range A (mm) | Size Range B (mm) | Tightening Torque |
|--------------|-------------------|-------------------|-------------------|
| AR1500       | 170 - 192         | 160 - 170         | 6Nm               |
| AR2250       | 260 - 285         | 240 - 250         | 13Nm              |
| AR3000       | 360 - 385         | 325 - 335         | 13Nm              |



## WIDE TENSION BAND

to create a reliable seal across multiple ribs and prevent the risk of 'slippage'.





# Installation



1. Mark both pipes, from the end to be connected, half the width of the coupling, less the required joint gap, which is usually 10mm.



2. Slide the coupling fully onto the smallest pipe.



3. Align the pipes and slide the coupling onto the larger pipe, ensuring the coupling face and marked line are flush. Tighten this clamp band.



4. Position the smaller pipe, ensuring the coupling face and marked line are flush. Tighten this clamp band.



5. Tighten the clamp bands to the recommended torque.

Tamp the bedding under the pipe and re-tighten prior to backfilling.